



Prepared by Goodhue County GIS Office

Eagle Mills (Ghost Town)

LOCATION: Intersection of County Road 7 and Welch Trail, Welch Township, Minnesota

STATUS: Public

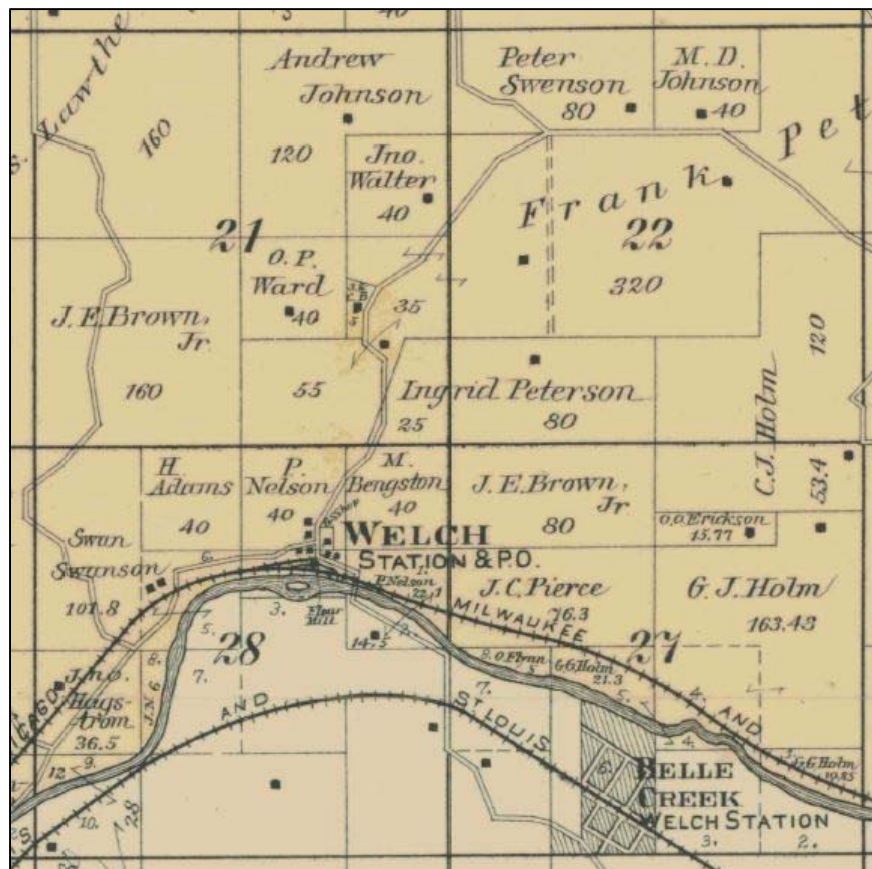
TYPE: Historic, District

HISTORY: Eagle Mills community formed due to the establishment of a post office in 1860 and closed in 1861. In 1886 a new post office was in operation, probably due to the activity in the area warranted the need. A flour mill, houses and small businesses contributed to the success of Eagle Mills. In 1886, Eagle Mills changed its name to Welch and continues on to this day.

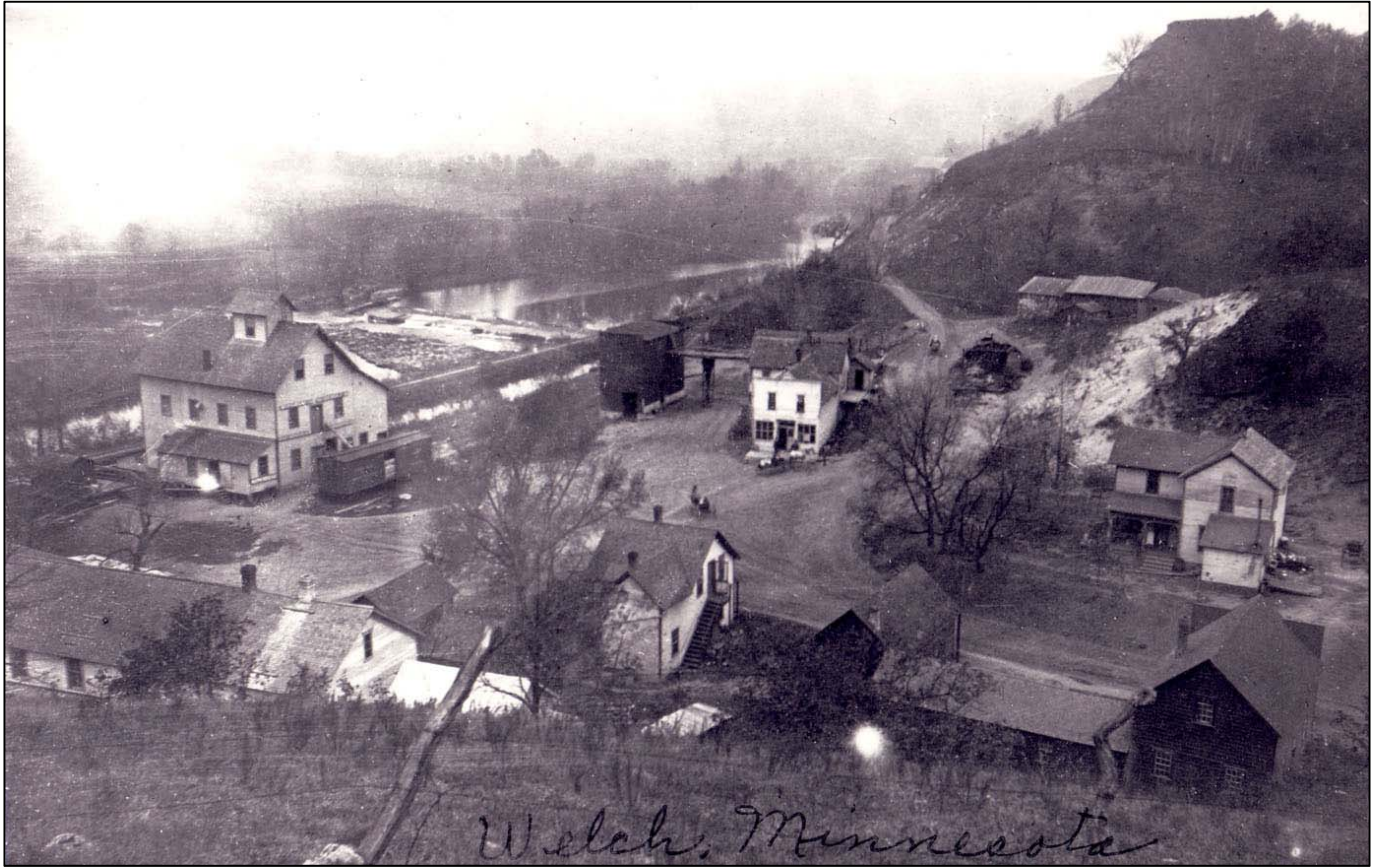
OTHER RESOURCES:

[Meyer, Roy W., *The Ghost Towns & Discontinued Post Office of Goodhue County*, The Goodhue County Historical Society Press, Red Wing, MN, 2003](#)

PROPERTY PICTURES:



1894 Goodhue County Plat Book, Welch Township, Sections 21, 22, 27, 28



Welch, Minnesota, 1880's.

Picture courtesy of Goodhue County Historical Society



Welch Post Office, 2012

Goodhue County Picture



Welch house, foreground house in picture above, 2012

Goodhue County Picture



Welch Mill, 2012

Goodhue County Picture



Welch Mill, 2012

Goodhue County Picture



Welch Town Hall, 2012

Goodhue County Picture