

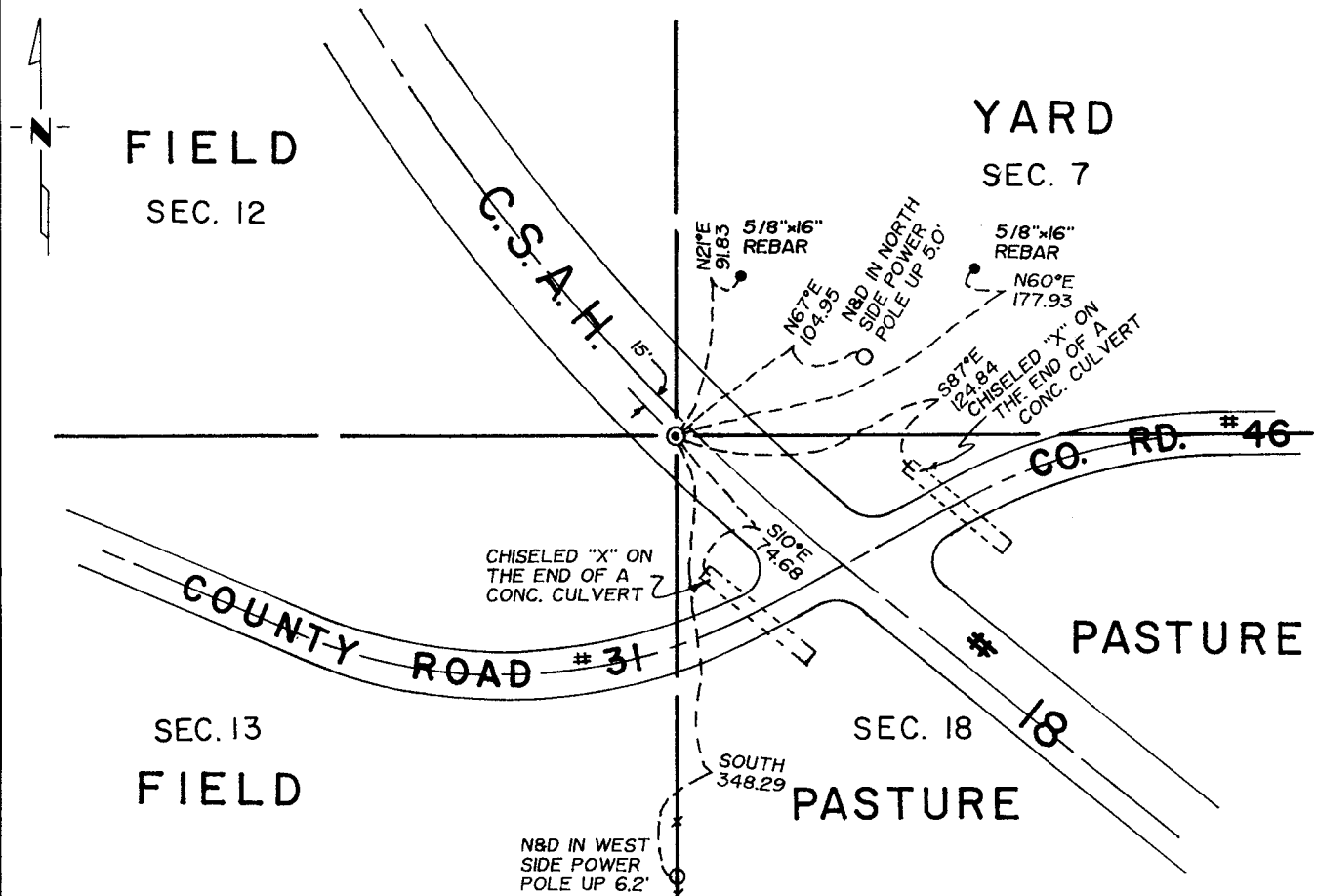
**CERTIFICATE OF LOCATION OF GOVERNMENT CORNER**

Northeast Corner of Section 13, Township 113N., Range 16W., 5th P.M.  
STATE OF MINNESOTA, County of Goodhue

At the corner location shown on the sketch:

- ☒ On 7/11/91 found a cast iron monument  
DATE
- ☒ left monument as found, ☐ lowered monument, ☐ removed monument (explain)
- ☒ On 9/22/92 placed a Goodhue County telespar monument  
DATE

SKETCH OF REFERENCE TIES



Statement of evidence relative to this corner location is on back of page.

I hereby certify that this document and the data contained herein was prepared by me or under my direct supervision.

Jeffrey D. Evans 12/19/94  
SIGNATURE DATE  
Registration No. 13144  
☒ Land Surveyor, ☐ Professional Engineer  
☒ County Surveyor, ☐ County Engineer

OFFICE OF THE COUNTY RECORDER  
County of Goodhue

I hereby certify that this document was filed in the Co. Recorders office at 11:00 AM. on the 20th day of December A.D., 19 94

County Recorder Craig Anderson  
By \_\_\_\_\_, Deputy  
DOCUMENT NO. \_\_\_\_\_