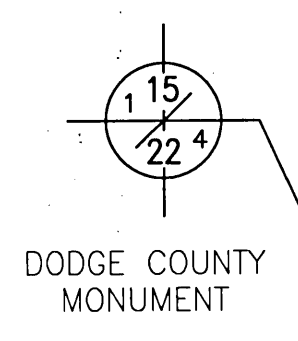
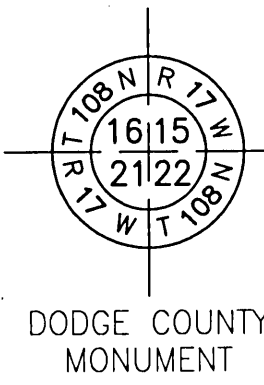


# DODGE COUNTY RIGHT OF WAY PLAT NO. 27

## DODGE COUNTY STATE AID HIGHWAY NO. 24



DODGE COUNTY  
RIGHT OF WAY  
PLAT NO. 26

DODGE COUNTY  
RIGHT OF WAY  
PLAT NO. 26

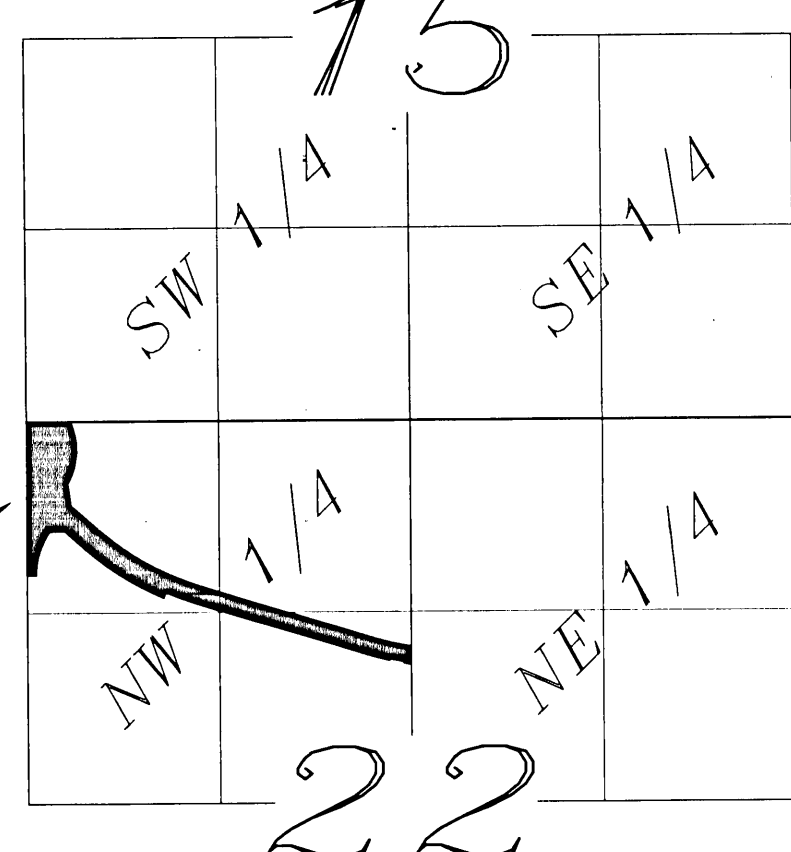
DODGE COUNTY  
MONUMENT

90°45'34" 298.31

90°45'34" 2334.83

### VICINITY MAP

SECTION 15 & 22, T108N, R17W.



PLAT  
NO. 27

CH AZ = 183°08'36"  
CH = 428.71  
R = 469.26  
L = 445.22  
Δ = 54°21'39"

172°08'00"  
153.37

PARCEL 1

PARCEL 1

CH AZ = 198°13'37"  
CH = 311.12  
R = 512.96  
L = 316.09  
Δ = 35°18'25"

270°34'27"  
60.06

CH AZ = 119°54'28"  
CH = 788.10'  
R = 1849.86'  
L = 794.19'  
Δ = 24°35'54"

PARCEL 1

CH AZ = 302°59'12"  
CH = 644.14  
R = 2009.86  
L = 646.94  
Δ = 18°26'32"

203°45'53"  
38.01

287°07'59"  
17.95

CH AZ = 290°25'38"  
CH = 193.74  
R = 1969.86  
L = 193.82  
Δ = 05°38'15"

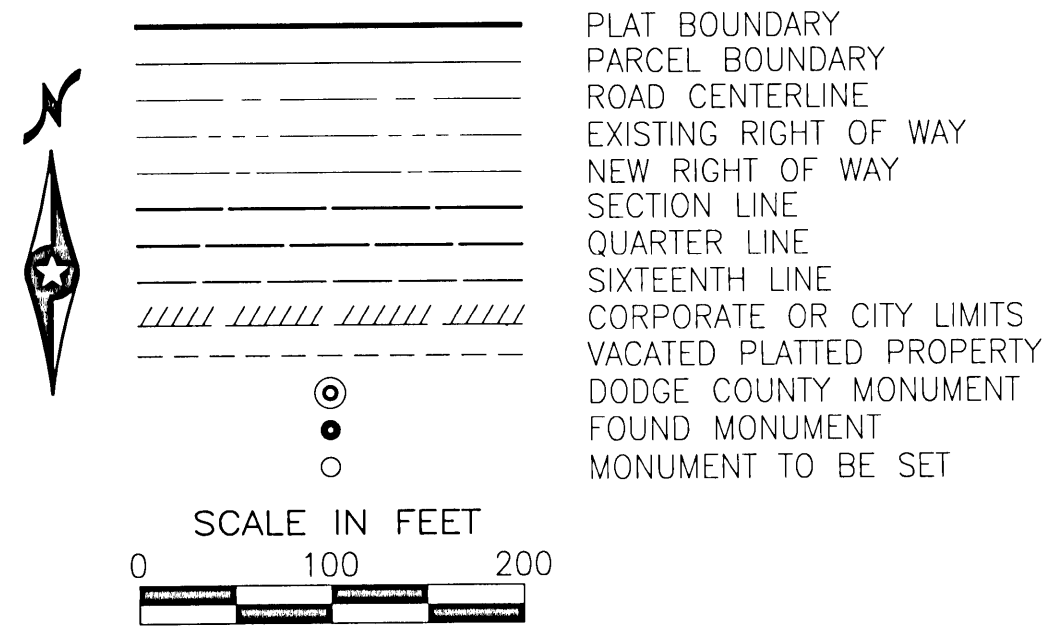
CH AZ = 103°27'58"  
CH = 267.26  
R = 1849.86  
L = 267.49  
Δ = 08°17'06"

THE AZIMUTH SYSTEM IS BASED ON THE HARN ADJUSTMENT  
OF NAD 1983, DODGE COUNTY COORDINATE SYSTEM WITH THE  
NORTH BEING 00 DEGREES 00 MINUTES 00 SECONDS.  
ALL AZIMUTH ARE REFERENCED CLOCKWISE FROM NORTH.  
THIS PLAT IS SUBJECT TO ALL EASEMENTS OF RECORD.  
MONUMENTS WILL BE SET AT ALL ANGLE POINTS AFTER  
CONSTRUCTION IS COMPLETE.

### RIGHT OF WAY IN SECTION 22, T.108N, R.17W

PARCEL NO.	RECORDED OWNER	LOCATION	PROPERTY I.D. NUMBER	EXISTING R/W (ACRES)	NEW R/W (ACRES)	TOTAL R/W IN FEE INTEREST
1	LOWELL & JOANNE WRIGHT TRUSTEES OF THE WRIGHT LIVING TRUSTS	W 1/2 NW 1/4	10.022.0600	4.94	5.10	10.04
2	JASON FRENCH	E 1/2 NW 1/4	10.022.0500	3.15	0.61	3.76

#### CONVENTIONAL SYMBOLS



I HEREBY CERTIFY THAT THIS PLAT WAS PREPARED BY ME OR UNDER MY DIRECT SUPERVISION AND THAT I AM A DULY LICENSED LAND SURVEYOR UNDER THE LAWS OF THE STATE OF MINNESOTA, THAT THIS PLAT MEETS THE REQUIREMENTS OF MINNESOTA STATUTES CHAPTER 160.085, THAT ALL MEASUREMENTS ARE CORRECTLY SHOWN ON THE PLAT, AND THAT THE PLAT RIGHT OF WAY BOUNDARY IS CORRECTLY DESIGNATED ON THIS PLAT.

CERTIFIED BY Lisa M. Hanni THIS 30 DAY OF November, 2012

LISA M. HANNI, L.S.  
DODGE COUNTY SURVEYOR  
MN. LICENSE 23048  
  
DOCUMENT NO. \_\_\_\_\_

I HEREBY CERTIFY THAT THIS INSTRUMENT WAS FILED IN THE OFFICE OF THE COUNTY RECORDER ON THIS 3rd DAY OF December, 2012, IN BOOK 8, OF Plats, PAGE 143 AT 2:30 O'CLOCK P.M. AND WAS DULY RECORDED IN THE DODGE COUNTY RECORDS AS DOCUMENT FILE NUMBER 199144

BY R. A. Bremer  
DODGE COUNTY RECORDER - Interim

THE COUNTY OF DODGE, A BODY POLITIC AND CORPORATE UNDER THE LAWS OF THE STATE OF MINNESOTA, PURSUANT TO THE MINNESOTA STATUTES CHAPTER 160.085, HAS CAUSED THE RIGHT OF WAY OF COUNTY STATE AID ROAD NO. 24 TO BE MAPPED AS IT TRANSGRESSES OVER AND ACROSS THE FOLLOWING DESCRIBED LANDS IN THE COUNTY OF DODGE, MINNESOTA, TO WIT:

THAT PART OF SAID RIGHT OF WAY INCLUDED IN THE FOLLOWING DESCRIBED TRACTS OF LAND:  
SECTION 22, TOWNSHIP 108 NORTH, RANGE 17 WEST:  
THE NORTHWEST QUARTER

THE BOARD OF COMMISSIONERS FOR DODGE COUNTY, MINNESOTA, IS HEREBY DESIGNATING THE RIGHT OF WAY OF COUNTY ROAD NO. 24 AS SHOWN ON DODGE COUNTY RIGHT OF WAY PLAT NO. 27

CERTIFIED BY Guy Kohlhofner THIS 30th DAY OF November, 2012

GUY KOHLHOFNER, P.E.  
DODGE COUNTY ENGINEER  
MN. LICENSE 23733

Ⓐ CH AZ = 279°28'19"  
CH = 47.10'  
R = 1969.86'  
L = 47.10'  
Δ = 01°22'12"

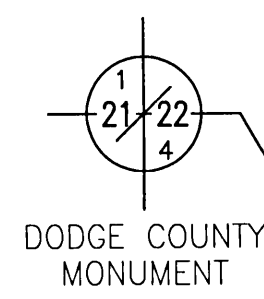
Ⓑ 10°09'24" 10.00

Ⓒ CH AZ = 281°39'24"  
CH = 102.61'  
R = 1959.86'  
L = 102.62'  
Δ = 03°00'00"

Ⓓ 193°09'25" 10.00

Ⓔ CH AZ = 285°22'58"  
CH = 153.02'  
R = 1969.86'  
L = 153.06"  
Δ = 04°27'07"

SEE SPECIFIC  
DETAILS



DODGE COUNTY  
MONUMENT

C.S.A.H. 7  
180°35'24" 1556.39

0°34'30" 1554.15