

MN PROJECT NO. TEAF 2097(127)  
 MINNESOTA DEPARTMENT OF TRANSPORTATION  
**DODGE COUNTY**  
**K-M BIKE TRAIL**

DODGE COUNTY  
 RIGHT-OF-WAY  
 PLAT NO. 15

FROM: THE SW CORNER OF THE SW 1/4 OF SECTION 22, T107N, R16W  
 TO: A POINT 470' EASTERLY AND 695.3' NORTHERLY OF THE SW CORNER OF  
 THE SW 1/4 OF SECTION 22, T107N, R16W

INDEX

<u>SHEET NO.</u>	
1	TITLE SHEET
2	PLAT MAP

BASIS OF BEARINGS  
 STATE PLANE GRID NORTH (NAD 1927) HAS BEEN USED AS  
 A BASIS OF BEARING FOR THIS SURVEY.

I HEREBY CERTIFY THAT THIS TRAIL LOCATION AND RIGHT OF WAY  
 IS CORRECTLY DESIGNATED ON THIS PLAT

Doug W. Rahlhager MINNESOTA REGISTRATION NO. 23733  
 DODGE COUNTY ENGINEER

DATED: 10-26- , 1998

BOARD OF COUNTY COMMISSIONERS CERTIFICATION OF PLAT

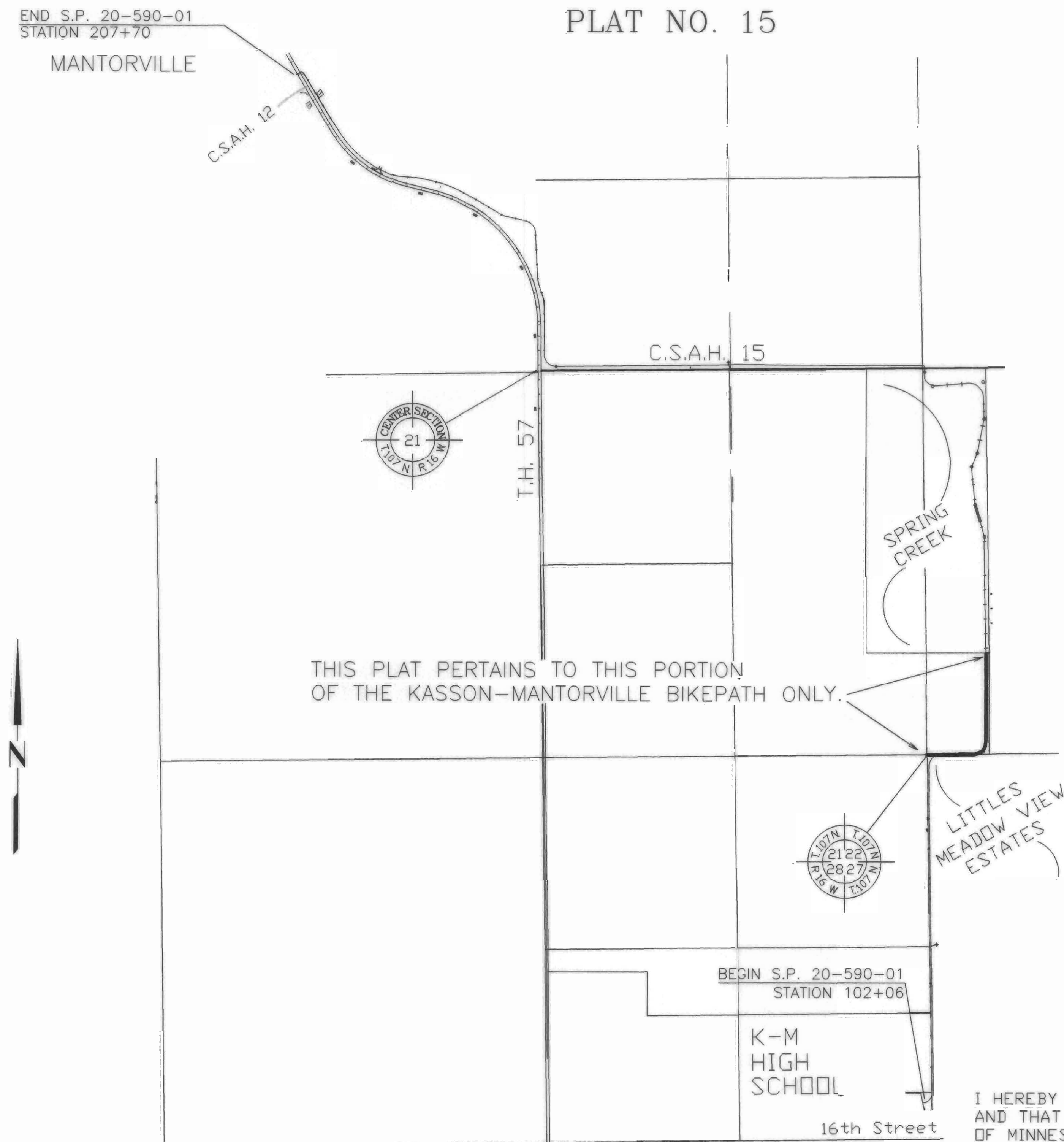
THIS PLAT WAS APPROVED AND ACCEPTED BY THE BOARD  
 OF COUNTY COMMISSIONERS OF THE COUNTY OF DODGE,  
 STATE OF MINNESOTA, AT A REGULAR MEETING HELD THE  
27 DAY OF October , 1998 A.D.

Don J. May  
 CHAIRPERSON

C 11-12

I HEREBY CERTIFY THAT THIS PLAT WAS PREPARED BY ME OR UNDER MY DIRECT SUPERVISION  
 AND THAT I AM A DULY REGISTERED LAND SURVEYOR UNDER THE LAWS OF THE STATE  
 OF MINNESOTA.

Roger W. Brand Oct. 26, 1998 8952  
 SURVEYOR'S SIGNATURE DATE REG. NO.



LOCATION PLAN



S.P. 20-590-01

SHEET 1 OF 2 SHEETS

DOCUMENT NO. 115228

OFFICE OF DODGE COUNTY RECORDER  
 DODGE COUNTY, MN  
 I HEREBY CERTIFY THAT THIS PLAT  
 HAS BEEN FILED IN THIS OFFICE  
 AT 12:30 O'CLOCK P. M. ON  
October 27 , 1998 IN  
 BOOK B OF Plats PAGE 48 H  
Sue A. Albers  
 COUNTY RECORDER

