

DODGE COUNTY
RIGHT-OF-WAY
PLAT NO. 16

COUNTY STATE AID HIGHWAY NO. 15

BETWEEN THE SW CORNER OF THE NW 1/4 OF SECTION 22, T107N, R16W AND A POINT 502.13' WEST OF THE CENTER OF SECTION 22, T107N, R16W
FROM THE SW CORNER OF THE NW 1/4 OF SECTION 22, T107N, R16W TO 0.40 MILES TO THE EAST

INDEX

SHEET NO.	TITLE SHEET
1	TITLE SHEET
2	PLAT MAP

BASIS OF BEARINGS

STATE PLANE GRID NORTH (NAD 1927) HAS BEEN USED AS A BASIS OF BEARINGS FOR THIS SURVEY.

THE DODGE COUNTY BOARD OF COMMISSIONERS IS HEREBY DESIGNATING THE DEFINITE LOCATION OF COUNTY STATE AID HIGHWAY NO. 15 FROM THE WEST LINE OF SECTION 22, T107N, R16W., EXTENDING 0.40 MILES TO THE EAST. THE PORTION OF SAID HIGHWAY AS SHOWN ON THIS PLAT, PREPARED JOINTLY BY THE COUNTY HIGHWAY DEPARTMENT AND THE COUNTY SURVEYOR OF DODGE COUNTY, IS HEREBY CERTIFIED AS THE OFFICIAL PLAT PURSUANT TO MINNESOTA STATUTES CHAPTER 160.085 AND CHAPTER 160.14, SUB. 1.

CERTIFIED BY *Dwight W. Kohlhauser* DATE: 10-13-98
DODGE COUNTY ENGINEER _____ REGISTRATION NO. 23733

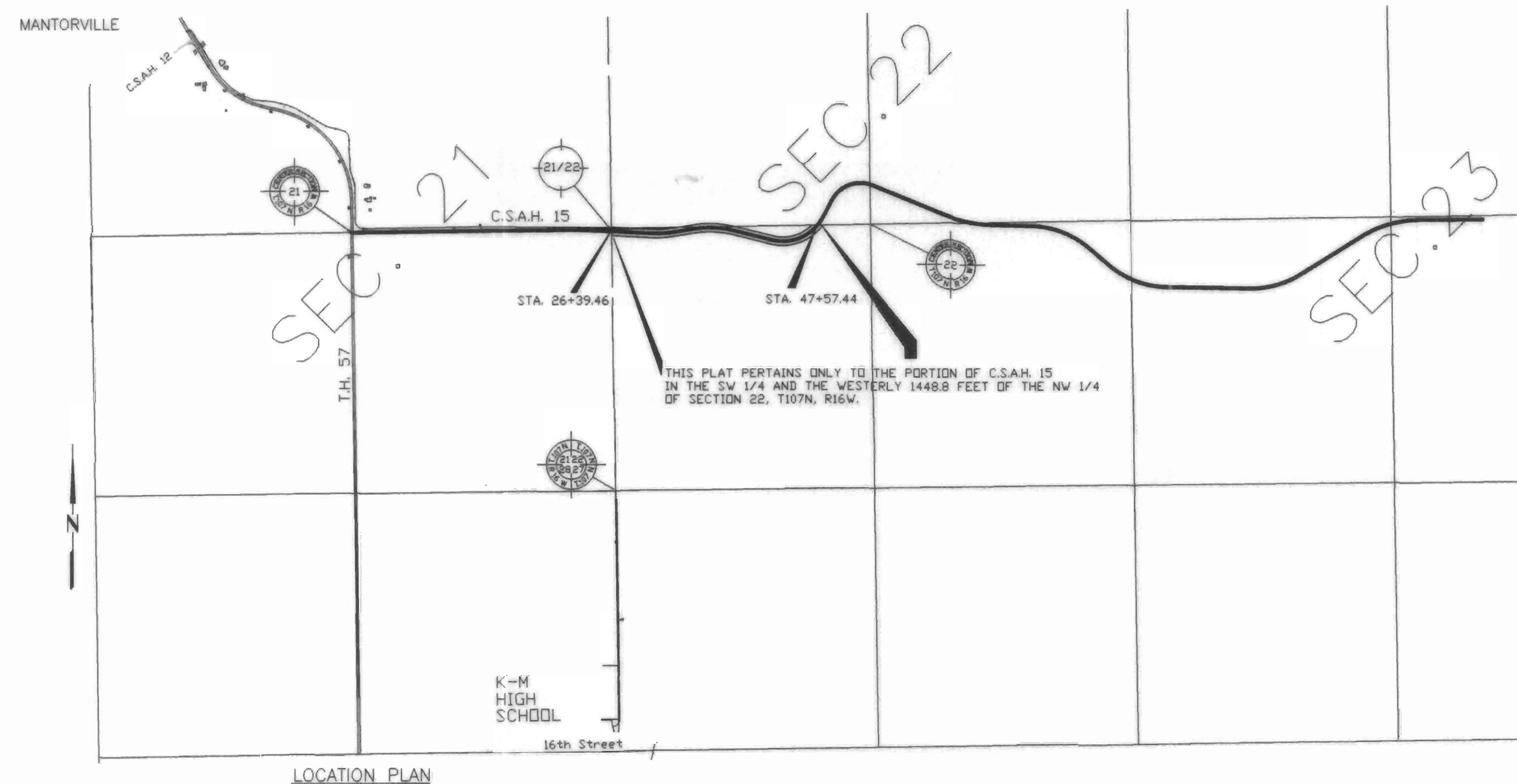
BOARD OF COUNTY COMMISSIONERS CERTIFICATION OF PLAT
THIS PLAT WAS APPROVED AND ACCEPTED BY THE BOARD OF COUNTY COMMISSIONERS OF THE COUNTY OF DODGE, STATE OF MINNESOTA, AT A REGULAR MEETING HELD THE 13 DAY OF October, 1998 A.D.

Don J. Gray
CHAIRPERSON

I HEREBY CERTIFY THAT THIS PLAT WAS PREPARED BY ME OR UNDER MY DIRECT SUPERVISION AND THAT I AM A DULY REGISTERED LAND SURVEYOR UNDER THE LAWS OF THE STATE OF MINNESOTA.

Roger W. Brand October 12, 1998 8952
SURVEYOR'S SIGNATURE DATE REG. NO.

C 11-14



LOCATION PLAN

0 1/4 MILE

DOCUMENT NO. 115021

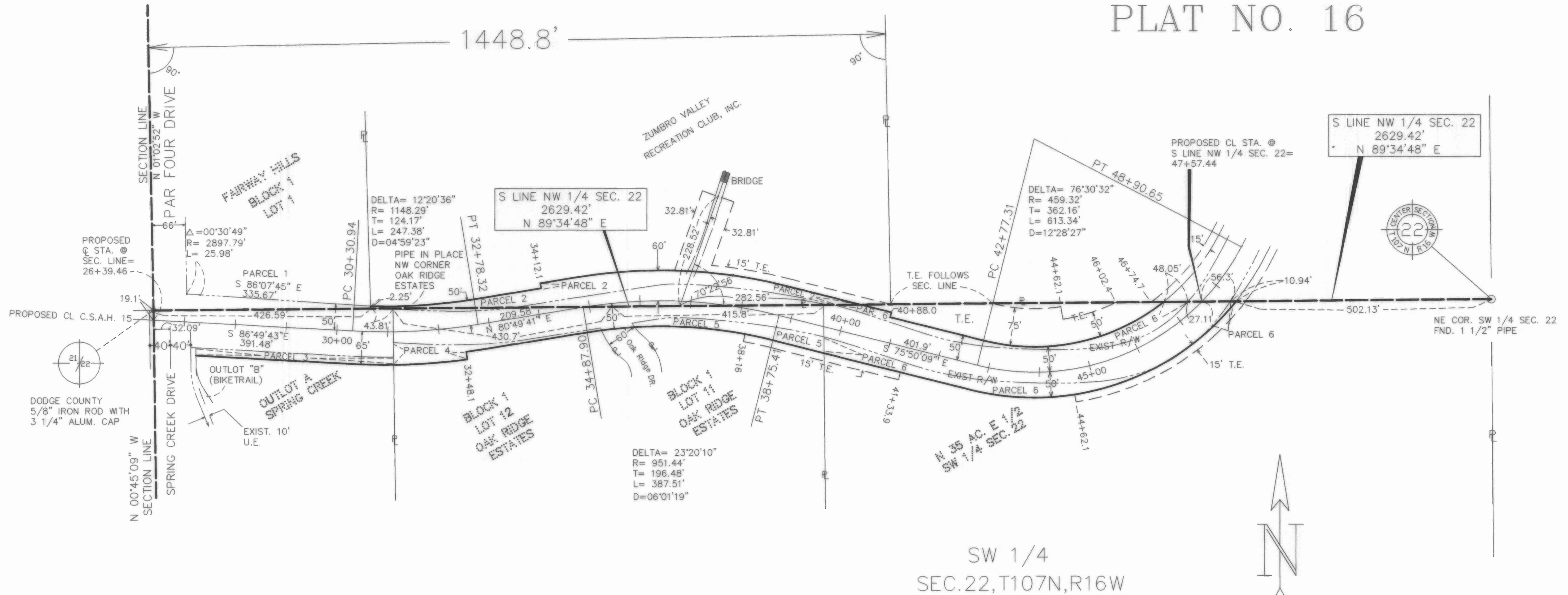
OFFICE OF DODGE COUNTY RECORDER
DODGE COUNTY, MN.
I HEREBY CERTIFY THAT THIS PLAT
HAS BEEN FILED IN THIS OFFICE
AT 3:00 O'CLOCK P.M. ON
October 13, 1998 IN
BOOK B OF Plats PAGE 48F
Sue A. Albers
COUNTY RECORDER

S.A.P. 20-615-13 AND
PART OF S.A.P. 20-615-14

SHEET 1 OF 2 SHEETS

NW 1/4
SEC.22,T107N,R16W

DODGE COUNTY
RIGHT OF WAY
PLAT NO. 16



1" = 100'



DISTANCES SHOWN TO FEET (33',50', ETC.) ARE EXACT EXTRINSIC VALUES

- SECTION LINE
- - - OLD R/W
- NEW R/W
- - - TEMPORARY EASEMENT
- - - UTILITY EASEMENT

C11-15

PARCEL NUMBER	OWNER	LOCATION	ENTIRE TRACT ACRES	NEW R/W ACRES	TEMPORARY EASEMENTS ACRES	TEMPORARY EASEMENTS EXPIRE ON	R/W INTEREST
1	DANIEL & LORI HODGMAN	LOT 1, BLOCK 1, FAIRWAY HILLS SUBDIVISION	2.75	0.00	0.00	N/A	NONE
2	ZUMBRO VALLEY RECREATION CLUB, INC.	PART OF THE S 1/2 OF THE NW 1/4 SEC. 22	82.90	0.52	0.35	CONTRACT COMPLETION	EASEMENT
3	RONALD F. CARLSEN & JAMES DONLINGER	OUTLOT "A" SPRING CREEK	1.13	0.13	0.00	N/A	EASEMENT
4	NEIL & DONNA BERGLUND	BLOCK 1, LOT 12 OAK RIDGE ESTATES	3.50	0.16	0.00	N/A	EASEMENT
5	JOHN B. & KATHLEEN M. COLLINS	BLOCK 1, LOT 11 OAK RIDGE ESTATES	3.95	0.18	0.06	CONTRACT COMPLETION	EASEMENT
6	JON R. & GLENDA D. TOLLEFSON	NORTH 35 ACRES OF THE E 1/2 OF THE SW 1/4 SEC. 22	35.00	0.60	0.86	CONTRACT COMPLETION	EASEMENT