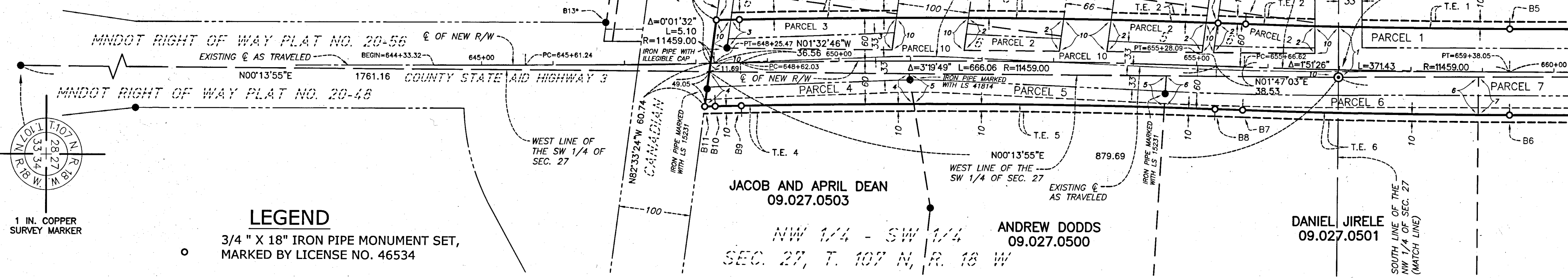
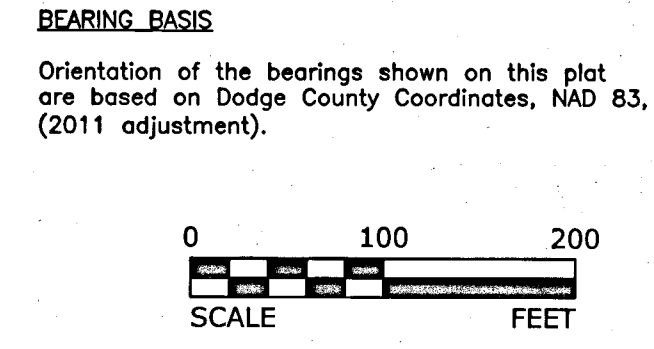
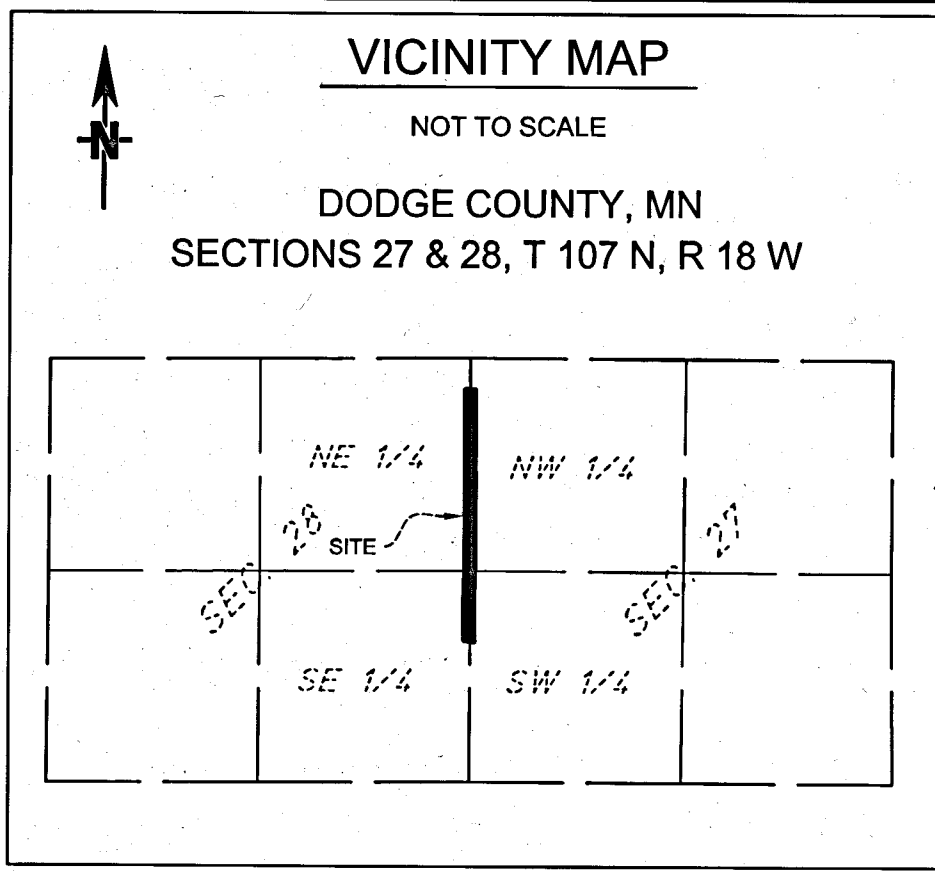


DODGE COUNTY RIGHT OF WAY PLAT NO. 33

COUNTY STATE AID HIGHWAY NO. 3



THE COUNTY OF DODGE, A BODY POLITIC AND CORPORATE UNDER THE LAWS OF THE STATE OF MINNESOTA, PURSUANT TO THE MINNESOTA STATUTES CHAPTER 160.085, HAS CAUSED THE RIGHT OF WAY OF COUNTY STATE AID HIGHWAY NO. 3 TO BE MAPPED AS IT TRANSGRESSES OVER AND ACROSS THE FOLLOWING DESCRIBED LANDS IN THE COUNTY OF DODGE, MINNESOTA, TO WIT:

THE EAST HALF OF SECTION 28 AND THE WEST HALF OF SECTION 27, TOWNSHIP 107 NORTH, RANGE 18 WEST, DODGE COUNTY MINNESOTA.

THE BOARD OF COMMISSIONERS FOR DODGE COUNTY, MINNESOTA, IS HEREBY DESIGNATING THE DEFINITE LOCATION OF COUNTY STATE AID HIGHWAY NO. 3 AS SHOWN ON DODGE COUNTY RIGHT OF WAY PLAT NO. 33

CERTIFIED BY *Guy Kohlhofner* THIS 4th DAY OF November 2022
 GUY KOHLHOFNER, P.E., DODGE COUNTY ENGINEER
 MN LICENSE 23733

CERTIFIED BY *Lisa Hanni* THIS 4th DAY OF November 2022
 LISA HANNI, L.S., DODGE COUNTY SURVEYOR
 MN LICENSE 23048

I hereby certify that this plat was prepared by me or under my direct supervision and I am a duly Licensed Land Surveyor under the laws of the State of Minnesota, that this plat meets the requirements of Minnesota State Statutes Chapter 160.085, that all measurements are correctly shown on the plat, and that the right of way boundary lines are correctly designated on this plat.

Lance Frost Date NOVEMBER 2ND 2022
 Lance Frost, L.S., Stonebrooke Engineering
 Minnesota License No. 46534

Document No. 246838

I hereby certify that this instrument was filed in this office of the County Recorder for record on this 7th day of

November 2022, in Book B of Plats, Page 193, at 11: o'clock A.M.

BDC County Recorder, Dodge County, Minnesota.

- LEGEND**
- 3/4" X 18" IRON PIPE MONUMENT SET, MARKED BY LICENSE NO. 46534
 - MONUMENT FOUND
 - ⊙ CAST IRON MONUMENT FOUND
 - RIGHT OF WAY PLAT BOUNDARY LINE
 - - - PROPERTY LINE
 - - - NEW RIGHT-OF-WAY CENTER LINE
 - - - EXISTING ROAD CENTER LINE
 - - - EXISTING RIGHT OF WAY LINE
 - - - NEW TEMPORARY EASEMENT LINE
 - - - EXISTING EASEMENT LINE
 - - - GOVERNMENT SUBDIVISION LINE

PARCEL	OWNER	LOCATION	EXISTING R/W (ACRES)	NEW R/W (ACRES)	TOTAL R/W IN FEE INTEREST	TEMPORARY EASEMENT*
1	PAUKERT TRUST	NE 1/4 OF SEC 28	1.93	1.39	3.31	0.56
2	WEBER TRUST	C.C. White's Second Addition	0.13	0.27	0.40	0.09
3	JAMES AND BONNIE YANKOVIAK	C.C. White's Second Addition	0.10	0.13	0.22	0.05
4	JACOB AND APRIL DEAN	NW 1/4 OF THE SW 1/4 OF SEC 27	0.11	0.18	0.29	0.07
5	ANDREW DODDS	NW 1/4 OF THE SW 1/4 OF SEC 27	0.12	0.23	0.34	0.08
6	DANIEL JIRELE	NW 1/4 OF THE SW 1/4 & SW 1/4 OF THE NW 1/4 OF SEC 27	0.25	0.24	0.50	0.10
7	FRANCES T. JIRELE LIVING TRUST	SW 1/4 OF THE NW 1/4 OF SEC 27	0.72	0.70	1.42	0.26
8	JOHN R. JIRELE, JR. TESTAMENTARY TRUST	NW 1/4 OF THE NW 1/4 OF SEC 27	0.23	0.19	0.42	0.13
9	LABOUNTY TRUST, ET AL.	NW 1/4 OF THE NW 1/4 OF SEC 27	0.45	0.38	0.83	0.14
10	PUBLIC	NE 1/4 OF THE SE 1/4 OF SEC 28 & C.C. White's Second Addition	0.90			

PLAT BOUNDARY DATA

FROM	TO	DISTANCE	BEARING
B1	B2	32.17	N01°32'46"W
B2	B3	C = 669.45	N0°07'09"E
A = 669.54 R = 11519.00 DELTA = 3°19'49" RT			
B3	B4	38.53	N01°47'03"E
B4	B5	C = 369.47	N0°51'21"E
A = 369.49 R = 11399.00 DELTA = 1°51'26" LT			
B5	B9**	2014.93	N0°04'22"W
B9**	B208****	60.00	N89°43'41"E
B208****	B15***	60.00	N89°43'41"E
B15***	B6	2015.35	S0°04'22"E
B6	B7	C = 373.36	S0°51'21"W
A = 373.38 R = 11519.00 DELTA = 1°51'26" RT			
B7	B8	38.53	S01°47'03"W
B8	B9	C = 662.48	S0°07'09"W
A = 669.57 R = 11399.00 DELTA = 3°19'49" LT			
B9	B10	36.56	S01°32'46"E
B10	B11	C = 14.59	S01°30'35"E
A = 14.59 R = 11519.00 DELTA = 0°04'21" RT			
B11	SECTION LINE	49.05	N82°33'24"W
SECTION LINE	B1	72.43	N82°33'24"W

* DENOTES CORNER FROM MNDOT RIGHT OF WAY PLAT NO. 20-56
 ** DENOTES CORNER FROM MNDOT RIGHT OF WAY PLAT NO. 20-12
 *** DENOTES CORNER FROM MNDOT RIGHT OF WAY PLAT NO. 20-13
 **** DENOTES CORNER FROM MNDOT RIGHT OF WAY PLAT NO. 20-12 AND MNDOT RIGHT OF WAY PLAT NO. 20-13
 ① ON RAILROAD RIGHT OF WAY LINE

* TEMPORARY EASEMENT COMMENCES ON FEBRUARY 1, 2023 AND EXPIRES ON NOVEMBER 30, 2025.

