

STATE HIGHWAY RIGHT OF WAY PLAT No. 20 - 1

STATE PROJECT 2002 (14-7)901

IN THE SOUTH ONE HALF OF SECTION 32, T.107 N., R.16 W,
DODGE COUNTY, MINNESOTA

THE COMMISSIONER OF HIGHWAYS IS HEREBY DESIGNATING THE DEFINITE
LOCATION OF TRUNK HIGHWAY NO. 14 FROM 0.5 MILE WEST OF
KASSON TO THE EAST COUNTY LINE.

As shown on this plat prepared by the State of Minnesota Department of Highways, is hereby certified as
the official plat of that portion of said T.H. 14 within the designated portion of Section 32, and the Com-
missioner's Order therefor, pursuant to Minnesota Laws of 1969, Chapters 207, 208 and 209 (now codified
as Minnesota Statutes 1969, section 161.16 subd. 2, section 160.14 subd. 1, and section 160.085 respectively),

Commissioner's Order No.	Location	Nature of Interest
55/45	PLATS 20-1 THRU 20-9	Definite location, width, access, temporary easement and building removal easement.

Recommended for Certification: *Frank D. Marzetti* 7-23-75 Date
R. G. Brennan 7-23-75 Date
 Director of R/W Operations Commissioner of Highways

I hereby certify that this plat was prepared by me or under my direct supervision and is a correct representation
 of said survey; that all distances are horizontal ground distances in feet; that difference between azimuths repre-
 sent plane angles in degrees, minutes and seconds; that the monuments to delineate this survey have been placed
 in the ground as shown on the plat; and that the right-of-way boundary lines are designated on the plat.

Certified by *John E. Sullivan* 10460 Reg. No. 7-22-75 Date
 Registered Land Surveyor

Survey Standards

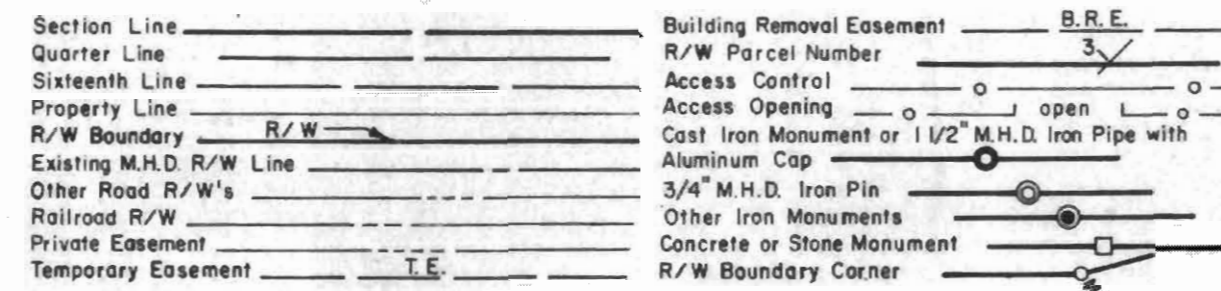
- The plat values, azimuths and distances, are based on the project control survey system.
- The boundary monuments shown on this plat have been field checked for location. The standard deviation for the monument positions is 0.1 ft.
- The state plane coordinates shown on one monument are based on ties to national control monuments.
- Certificates of Location have been filed at the Register of Deeds' Office and/or the County Surveyor's Office for the section corner monuments shown on this plat.
- For details of this survey contact the Surveying and Mapping Section at the Minnesota Highway Department ROCHESTER Name of District.

AZIMUTH ORIENTATION AND GRID CONVERSION

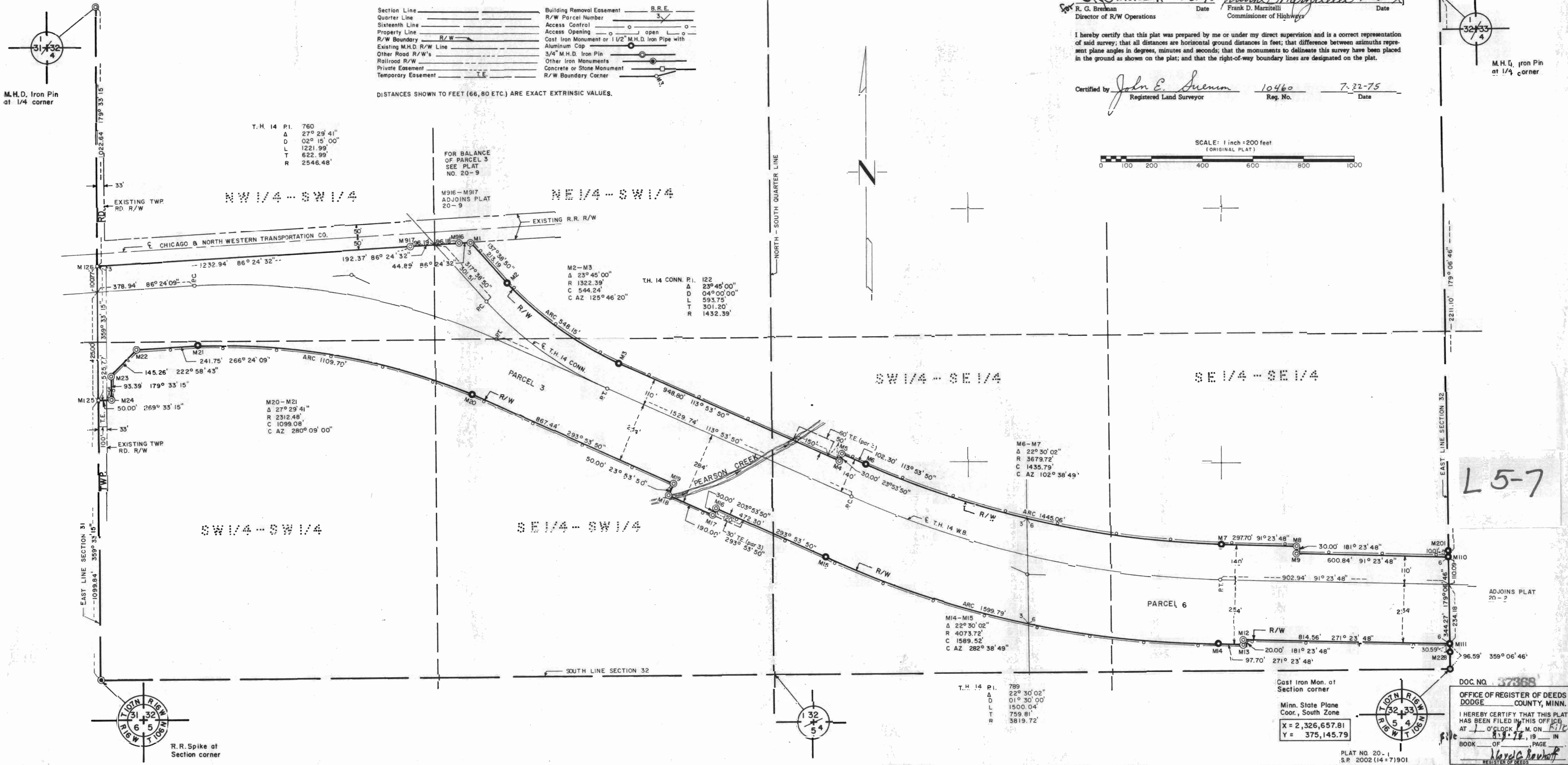
Plat azimuths are oriented to Minnesota State Plane Coordinate System with 0 degrees 0 minutes 0 seconds being "GRID NORTH".
 Plat distances are ground lengths and can be converted to Minnesota State Plane Grid lengths by multiplying Plat distances by 0.9998954

PARCEL	OWNER	LOCATION	TORREN'S CERTIFICATE NO.	NEW T.M. R/W ACRES (MORE OR LESS)	TEMPORARY EASEMENT	BUILDING REMOVAL EASEMENT	EASEMENT EXPIRES ON	PERMANENT R/W INTEREST
3	Elna Beulah Frost	SW 1/4 SW 1/4 SE 1/4		34.09	0.29		12-1-77	Fee
6	Fred C. Vail	S 1/2 SE 1/4		14.24				Fee

CONVENTIONAL SYMBOLS



Distances shown to feet (66,80 ETC) ARE EXACT EXTRINSIC VALUES.



T.H. 14 P1. 760
 A 27° 29' 41"
 D 02° 15' 00"
 L 1221.99'
 T 622.99'
 R 2546.48'

FOR BALANCE OF PARCEL 3
 SEE PLAT NO. 20-9

M916-M917
 ADJOINING PLAT 20-9

M2-M3
 A 23° 45' 00"
 R 1322.39'
 C 544.24'
 C AZ 125° 46' 20"

T.H. 14 CONN. P1. 122
 A 23° 45' 00"
 D 04° 00' 00"
 L 933.75'
 T 301.20'
 R 1432.39'

M20-M21
 A 27° 29' 41"
 R 2312.48'
 C 1099.08'
 C AZ 280° 09' 00"

M6-M7
 A 22° 30' 02"
 R 3679.72'
 C 1435.79'
 C AZ 102° 38' 49"

T.H. 14 P1. 789
 A 22° 30' 02"
 D 01° 30' 00"
 L 1500.04'
 T 759.81'
 R 3819.72'

Cast Iron Mon. at Section corner
 Minn. State Plane Coord., South Zone
 X = 2,326,657.81
 Y = 375,145.79

DOC. NO. 37368
 OFFICE OF REGISTER OF DEEDS
 DODGE COUNTY, MINN.
 I HEREBY CERTIFY THAT THIS PLAT HAS BEEN FILED IN THIS OFFICE AT 1 O'CLOCK P.M. ON 7-22-75 IN BOOK OF PAGE 54
David C. Bauhoff
 REGISTER OF DEEDS

PLAT NO. 20-1
 S.P. 2002 (14-7)901