

# MINNESOTA DEPARTMENT OF TRANSPORTATION RIGHT OF WAY PLAT No. 20-10

STATE PROJECT NO. 2001(14-7)901

IN THE SOUTH ONE HALF OF SECTION 19, T. 107 N., R. 18 W. AND  
IN THE NORTH ONE HALF OF SECTION 30, T. 107 N., R. 18 W.  
DODGE COUNTY, MINNESOTA

THE COMMISSIONER OF TRANSPORTATION IS HEREBY DESIGNATING THE DEFINITE  
LOCATION OF TRUNK HIGHWAY NO. 14 FROM WEST COUNTY LINE TO 2.0  
MILES EAST

As shown on this plat prepared by the State of Minnesota Department of Transportation is hereby certified as  
the official plat of that portion of said T.H. 14 within the designated portion of Sections 19 and 30, and  
the Commissioner's Order therefor, pursuant to Minnesota Statutes 1969, section 161.16 subd. 2, section  
160.14 subd. 1, and section 160.085 and Minnesota Laws of 1976, Chapter 166.

Commissioner's Order No.	Location	Nature of Interest
62329	Plats 20-10 and 20-11	Definite location, width, access, temporary easement and building removal easement.

Recommended for Certification: *R.H. Sullivan* 1-5-79  
 Certified: *R.P. Brown* 1-5-79  
 Director of R/W Operations Date Commissioner of Transportation Date

I hereby certify that this plat was prepared by me or under my direct supervision and is a correct representation of said survey; that all distances are horizontal ground distances in feet; that difference between azimuths represent plane angles in degrees, minutes and seconds; that the monuments to delineate this survey have been placed in the ground as shown on the plat; and that the right-of-way boundary lines are designated on the plat.

Certified by *John E. Jensen* 10460 1-5-79  
Registered Land Surveyor Reg. No. Date

RIGHT OF WAY IN SECTION 19							
PARCEL	OWNER	LOCATION	TORREN'S CERTIFICATE NO.	NEW TH. R/W		BUILDING REMOVAL EASEMENT	PERMANENT R/W INTEREST
				ACRES	(MORE OR LESS)		
1	Lyman H. Jensen	SW 1/4 SW 1/4		0.65	0.33		12-1-84 Fee
2	Evelyn Kubat	S 1/2 SW 1/4		1.42	0.81		12-1-84 Fee
4	Ellen Thompson	SW 1/4 SE 1/4		0.26	0.12		12-1-84 Fee
5	Donald F. Kubat	SW 1/4 SE 1/4		1.11	0.58		12-1-84 Fee
6	Lawrence Christy	SE 1/4 SE 1/4		1.09	0.74		12-1-84 Fee
RIGHT OF WAY IN SECTION 30							
3	Robert Wavrin	N 1/2 NW 1/4		0.99	0.97		12-1-84 Fee
7	Paul Howieson	N 1/2 NE 1/4		1.29	1.13		12-1-84 Fee

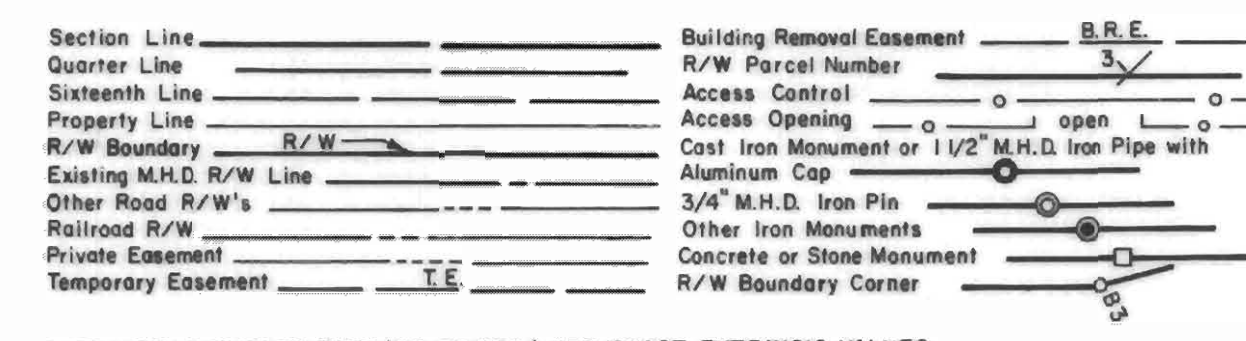
### AZIMUTH ORIENTATION AND GRID CONVERSION

Plat azimuths are oriented to Minnesota State Plane Coordinate System with 0 degrees 0 minutes 0 seconds being "GRID NORTH".  
Plat distances are ground lengths and can be converted to Minnesota State Plane Grid lengths by multiplying Plat distances by 0.9998936

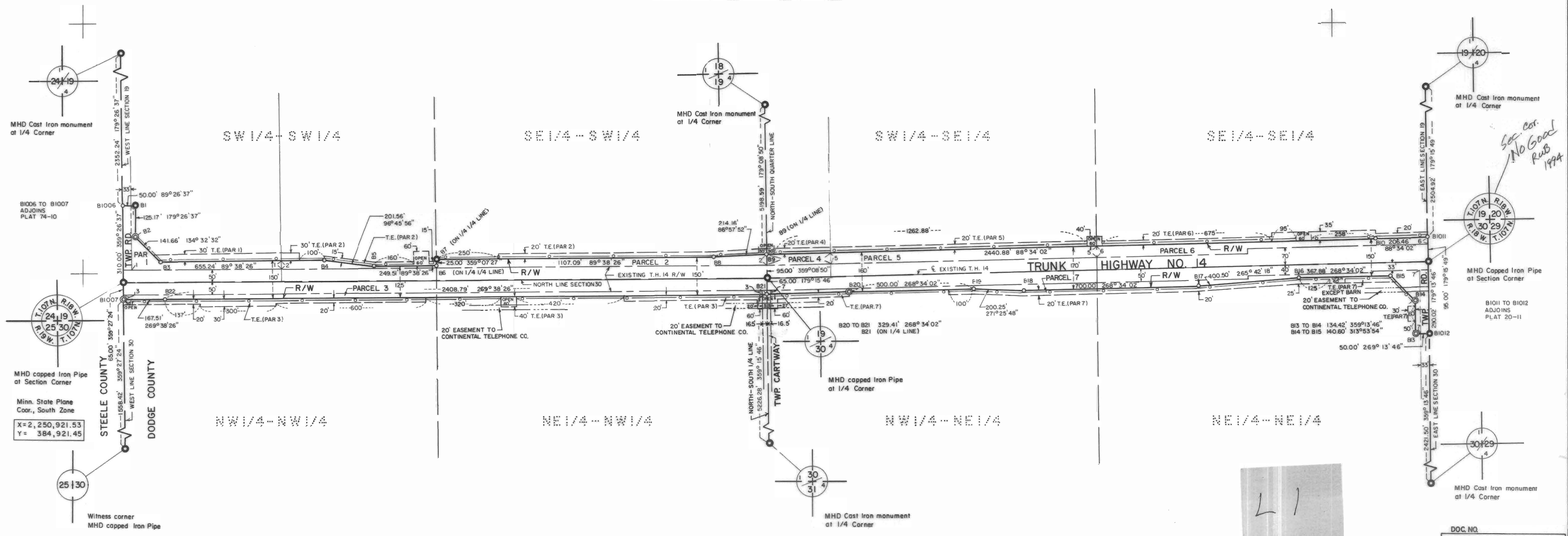
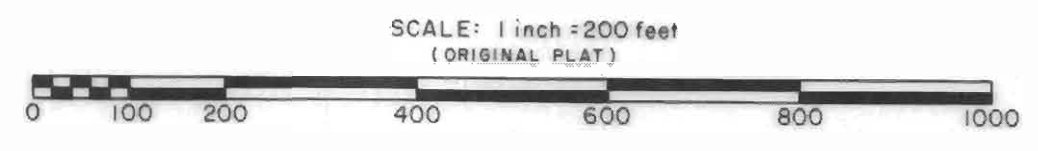
### SURVEY STANDARDS

- The plat values, azimuths and distances, are based on the project control survey system.
- The boundary monuments shown on this plat have been field checked for location. The standard deviation for the monument positions is 0.1 ft.
- The state plane coordinates shown on one monument are based on ties to national control monuments.
- Certificates of Location have been filed at the County Recorder's Office and/or the County Surveyor's Office for the section corner monuments shown on this plat.
- For details of this survey contact the Surveying and Mapping Section at the Minnesota Department of Transportation  
Rochester  
Name of District

### CONVENTIONAL SYMBOLS



DISTANCES SHOWN TO FEET (66,80 ETC.) ARE EXACT EXTRINSIC VALUES.



DOC. NO.  
 OFFICE OF COUNTY RECORDER  
 DODGE COUNTY, MINN.  
 I HEREBY CERTIFY THAT THIS PLAT  
 HAS BEEN FILED IN THIS OFFICE  
 AT \_\_\_\_\_ O'CLOCK \_\_\_\_\_ M. ON \_\_\_\_\_  
 \_\_\_\_\_, 19\_\_\_\_ IN  
 BOOK \_\_\_\_\_ OF \_\_\_\_\_, PAGE \_\_\_\_\_  
 COUNTY RECORDER

PLAT NO. 20-10  
S.P. 2001(14-7)901