

MINNESOTA DEPARTMENT OF TRANSPORTATION RIGHT OF WAY PLAT No. 20-11

STATE PROJECT NO. 2001 (14-7)901

IN THE SOUTH ONE HALF OF SECTION 20, T. 107 N., R. 18 W. AND
IN THE NORTH ONE HALF OF SECTION 29, T. 107 N., R. 18 W.
DODGE COUNTY, MINNESOTA

THE COMMISSIONER OF TRANSPORTATION IS HEREBY DESIGNATING THE DEFINITE
LOCATION OF TRUNK HIGHWAY NO. 14 FROM WEST COUNTY LINE TO 2.0
MILES EAST

As shown on this plat prepared by the State of Minnesota Department of Transportation is hereby certified as the official plat of that portion of said T.H. 14 within the designated portion of Sections 20 and 29, and the Commissioner's Order therefor, pursuant to Minnesota Statutes 1969, section 161.16 subd. 2, section 160.14 subd. 1, and section 160.085 and Minnesota Laws of 1976, Chapter 166.

Commissioner's Order No.	Location	Nature of Interest
62329	Plats 20-10 and 20-11	Definite location, width, access, temporary easement and building removal easement.

Recommended for Certification: *R.H. Sullivan* 1-5-79 Date
 Certified: *R. Marshall* 1/10/79 Date
 R.H. Sullivan, Director of R/W Operations
 R. Marshall, Commissioner of Transportation

I hereby certify that this plat was prepared by me or under my direct supervision and is a correct representation of said survey; that all distances are horizontal ground distances in feet; that difference between azimuths represent plane angles in degrees, minutes and seconds; that the monuments to delineate this survey have been placed in the ground as shown on the plat; and that the right-of-way boundary lines are delineated on the plat.

Certified by *John E. Swenson* 10460 1-5-79
 Registered Land Surveyor Res. No. Date

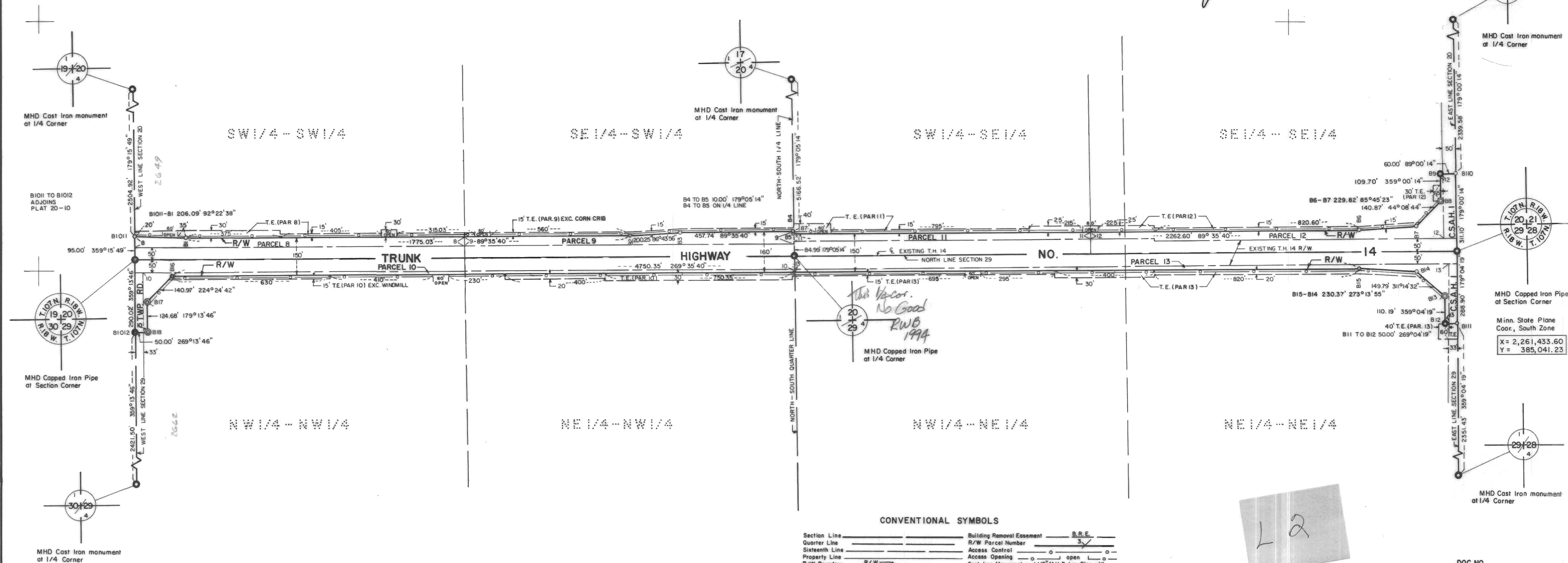
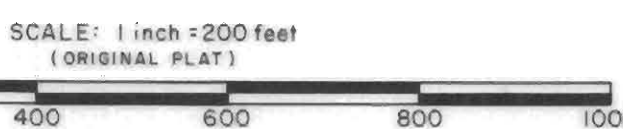
RIGHT OF WAY IN SECTION 20								
PARCEL	OWNER	LOCATION	TORREY'S CERTIFICATE NO.	NEW TH. R/W ACRES (MORE OR LESS)	TEMPORARY EASEMENT	BUILDING REMOVAL EASEMENT	EASEMENT EXPIRES ON	PERMANENT R/W INTEREST
8	Donald Kubat	SW 1/4 SW 1/4		1.14	0.66		12-1-84	Fee
9	Mark C. Preul	SE 1/4 SW 1/4		1.28	0.43		12-1-84	Fee
11	Richard E. Harmer	SW 1/4 SE 1/4		0.76	0.57		12-1-84	Fee
12	W. E. Harmer	S 1/2 SE 1/4		1.33	0.55		12-1-84	Fee
RIGHT OF WAY IN SECTION 29								
10	Ralph J. Russell	N 1/2 NW 1/4		0.93	0.87		12-1-84	Fee
13	Walter E. Laue	N 1/2 NE 1/4		1.15	1.17		12-1-84	Fee

SURVEY STANDARDS

- The plat values, azimuths and distances, are based on the project control survey system.
- The boundary monuments shown on this plat have been field checked for location. The standard deviation for the monument positions is 0.1 ft.
- The state plane coordinates shown on one monument are based on ties to national control monuments.
- Certificates of Location have been filed at the County Recorder's Office and/or the County Surveyor's Office for the section corner monuments shown on this plat.
- For details of this survey contact the Surveying and Mapping Section at the Minnesota Department of Transportation, ROCHESTER, Name of District

AZIMUTH ORIENTATION AND GRID CONVERSION

Plat azimuths are oriented to Minnesota State Plane Coordinate System with 0 degrees 0 minutes 0 seconds being "GRID NORTH".
Plat distances are ground lengths and can be converted to Minnesota State Plane Grid lengths by multiplying Plat distances by 0.9998956



CONVENTIONAL SYMBOLS

Section Line	Building Removal Easement	B.R.E.
Quarter Line	R/W Parcel Number	3
Sixteenth Line	Access Control	
Property Line	Access Opening	open
R/W Boundary	Cast Iron Monument or 1/2" M.H.D. Iron Pipe with Aluminum Cap	
Existing M.H.D. R/W Line	3/4" M.H.D. Iron Pin	
Other Road R/W's	Other Iron Monuments	
Railroad R/W	Concrete or Stone Monument	
Private Easement	R/W Boundary Corner	
Temporary Easement	T.E.	

DISTANCES SHOWN TO FEET (66, 80 ETC.) ARE EXACT EXTRINSIC VALUES.

L2

DOC. NO. 47512
 Jan. 26, 1979
 OFFICE OF COUNTY RECORDER
 DODGE COUNTY, MINN.
 I HEREBY CERTIFY THAT THIS PLAT HAS BEEN FILED IN THIS OFFICE AT _____ O'CLOCK _____ M. ON _____ IN BOOK _____ OF _____ PAGE _____ COUNTY RECORDER

PLAT NO. 20-11
S.P. 2001 (14-7)901