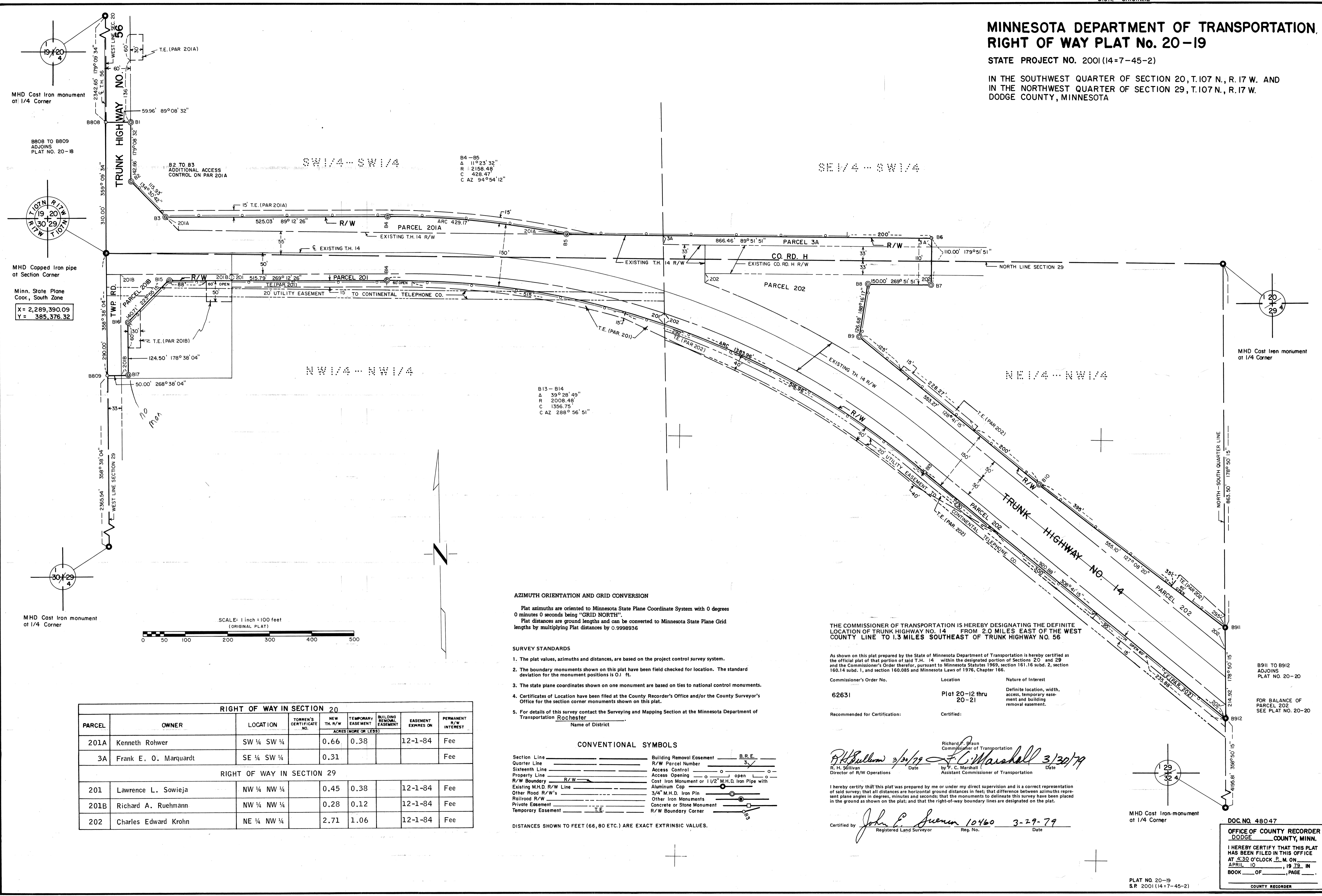


MINNESOTA DEPARTMENT OF TRANSPORTATION RIGHT OF WAY PLAT No. 20-19

STATE PROJECT NO. 2001 (14-7-45-2)

IN THE SOUTHWEST QUARTER OF SECTION 20, T.107 N., R.17 W. AND
IN THE NORTHWEST QUARTER OF SECTION 29, T.107 N., R.17 W.
DODGE COUNTY, MINNESOTA



MHD Cast Iron monument at 1/4 Corner

B808 TO B809 ADJOINS PLAT NO. 20-18

MHD Capped Iron pipe at Section Corner

Minn. State Plane Coord., South Zone
X = 2,289,390.09
Y = 385,376.32

MHD Cast Iron monument at 1/4 Corner

MHD Cast Iron monument at 1/4 Corner

B911 TO B912 ADJOINS PLAT NO. 20-20

FOR BALANCE OF PARCEL 202 SEE PLAT NO. 20-20

MHD Cast Iron monument at 1/4 Corner

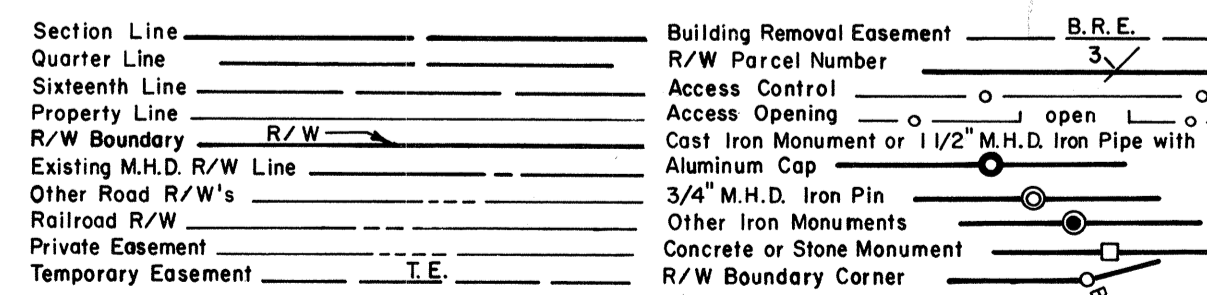
AZIMUTH ORIENTATION AND GRID CONVERSION

Plat azimuths are oriented to Minnesota State Plane Coordinate System with 0 degrees 0 minutes 0 seconds being "GRID NORTH".
Plat distances are ground lengths and can be converted to Minnesota State Plane Grid lengths by multiplying Plat distances by 0.9998936

SURVEY STANDARDS

- The plat values, azimuths and distances, are based on the project control survey system.
- The boundary monuments shown on this plat have been field checked for location. The standard deviation for the monument positions is 0.1 ft.
- The state plane coordinates shown on one monument are based on ties to national control monuments.
- Certificates of Location have been filed at the County Recorder's Office and/or the County Surveyor's Office for the section corner monuments shown on this plat.
- For details of this survey contact the Surveying and Mapping Section at the Minnesota Department of Transportation Rochester
Name of District _____

CONVENTIONAL SYMBOLS



DISTANCES SHOWN TO FEET (66, 80 ETC.) ARE EXACT EXTRINSIC VALUES.

THE COMMISSIONER OF TRANSPORTATION IS HEREBY DESIGNATING THE DEFINITE LOCATION OF TRUNK HIGHWAY NO. 14 FROM 2.0 MILES EAST OF THE WEST COUNTY LINE TO 1.3 MILES SOUTHEAST OF TRUNK HIGHWAY NO. 56

As shown on this plat prepared by the State of Minnesota Department of Transportation is hereby certified as the official plat of that portion of said T.H. 14 within the designated portion of Sections 20 and 29 and the Commissioner's Order therefor, pursuant to Minnesota Statutes 1969, section 161.16 subd. 2, section 160.14 subd. 1, and section 160.085 and Minnesota Laws of 1978, Chapter 166.

Commissioner's Order No.	Location	Nature of Interest
62631	Plat 20-12 thru 20-21	Definite location, width, access, temporary easement and building removal easement.

Recommended for Certification: _____ Certified: _____

Richard F. Braun
Commissioner of Transportation
Date: 3/30/79
By: F. C. Marshall
Assistant Commissioner of Transportation
Date: 3/30/79

I hereby certify that this plat was prepared by me or under my direct supervision and is a correct representation of said survey; that all distances are horizontal ground distances in feet; that difference between azimuths represent plane angles in degrees, minutes and seconds; that the monuments to delineate this survey have been placed in the ground as shown on the plat; and that the right-of-way boundary lines are designated on the plat.

Certified by: John E. Juvenon 10460 3-29-79
Registered Land Surveyor Reg. No. Date

RIGHT OF WAY IN SECTION 20							
PARCEL	OWNER	LOCATION	TORREN'S CERTIFICATE NO.	NEW TH. R/W ACRES (MORE OR LESS)	TEMPORARY EASEMENT	BUILDING REMOVAL EASEMENT	PERMANENT R/W INTEREST
201A	Kenneth Rohwer	SW 1/4 SW 1/4		0.66	0.38		Fee
3A	Frank E. O. Marquardt	SE 1/4 SW 1/4		0.31			Fee
RIGHT OF WAY IN SECTION 29							
201	Lawrence L. Sowieja	NW 1/4 NW 1/4		0.45	0.38		Fee
201B	Richard A. Ruehmann	NW 1/4 NW 1/4		0.28	0.12		Fee
202	Charles Edward Krohn	NE 1/4 NW 1/4		2.71	1.06		Fee

DOC. NO. 48047

OFFICE OF COUNTY RECORDER
DODGE COUNTY, MINN.
I HEREBY CERTIFY THAT THIS PLAT HAS BEEN FILED IN THIS OFFICE AT 4:30 O'CLOCK P.M. ON APRIL 10, 1979 IN BOOK OF _____ PAGE _____
COUNTY RECORDER