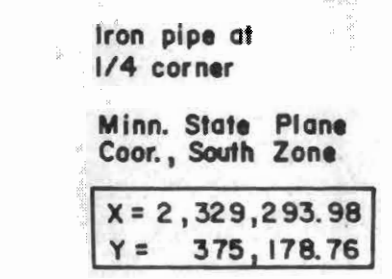
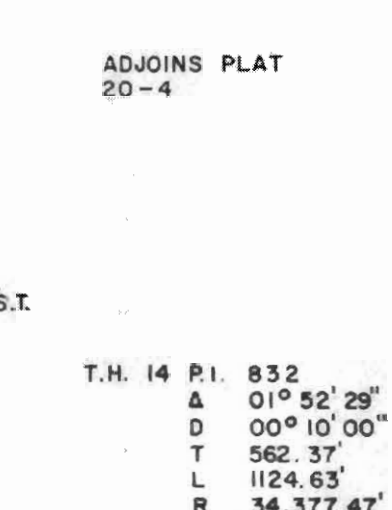
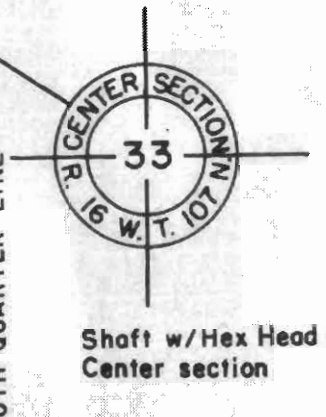
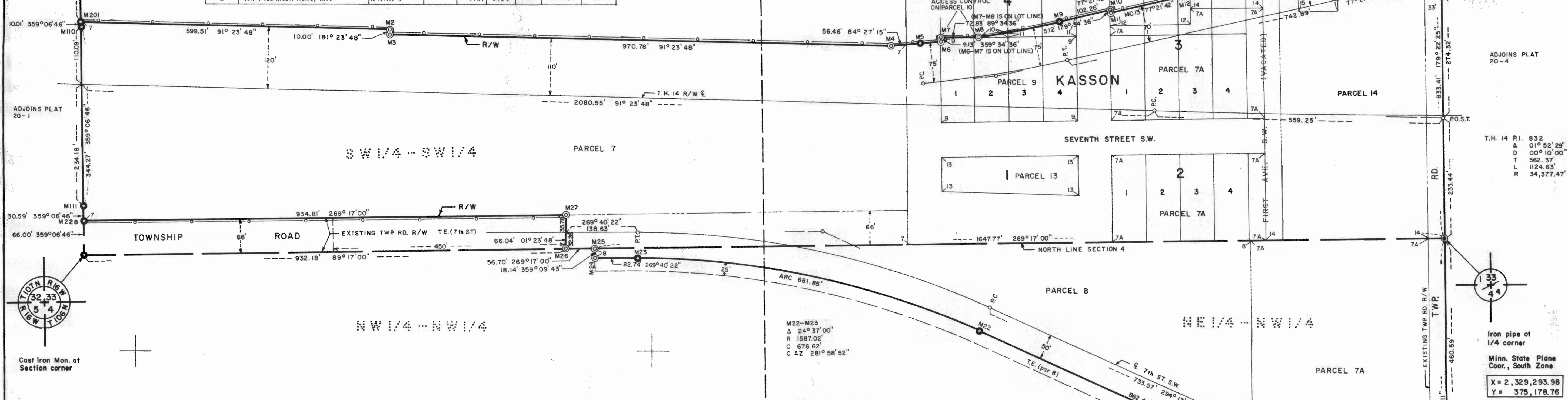
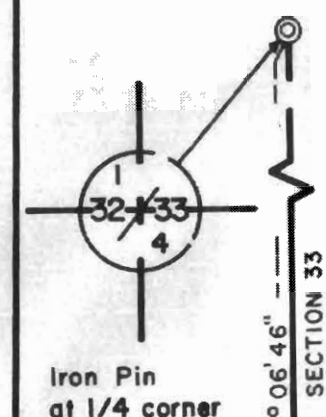


STATE HIGHWAY RIGHT OF WAY PLAT No. 20-2

STATE PROJECT 2002 (14-7)901

IN THE SOUTHWEST QUARTER OF SECTION 33, T.107 N., R. 16 W. AND
IN THE NORTHWEST QUARTER OF SECTION 4, T.106 N., R. 16 W.
DODGE COUNTY, MINNESOTA

RIGHT OF WAY IN SECTION 33						
PARCEL	OWNER	LOCATION	TOWN'S CERTIFICATE NO.	NEW T.W. #	TEMPORARY EASEMENT (ACRES MORE OR LESS)	PERMANENT EASEMENT (ACRES MORE OR LESS)
7	Clark Blaine	S 1/4 SW 1/4		12.87		Fee
14	Clifford H. Poffenberger	SE 1/4 SW 1/4		3.62		Fee
14 A	Clifford H. Poffenberger	SE 1/4 SW 1/4		0.07		Fee
15	Walter L. Erath	SE 1/4 SW 1/4		0.16		Fee
16	Efriam Moen	SE 1/4 SW 1/4		0.09	0.09	12-1-77 Fee
POWER'S ADDITION						
7 A	Win. Alexander	Block 2 & 3 Vacated First Ave. S.W.		104,533		Fee
9	Duane Timm	Lots 1,2,3,4, of Blk. 4		43,560		Fee
10	Michael F. Volkart	Lots 7 & 8, Blk. 4		256		Fee
11	Oscar Vegjer	Lots 5 & 6, Blk. 4		4,257		Fee
12	John M. Wangen	Lots 6,7,8, Blk. 3		6,324		Fee
13	Floyd A. Baker	Block 1		18,876		Fee
14	Clifford H. Poffenberger	Lots 5 & 6, Blk. 3 Vacated 1st Ave. S.W.		6,470		Fee
RIGHT OF WAY IN SECTION 4						
ACRES (MORE OR LESS)						
7A	Wm. Alexander	NE 1/4 NW 1/4		4.06	0.17	12-1-77 Fee
8	Wii-Fred Mobil Home, Inc.	N 1/2 NW 1/4		4.67	0.80	12-1-77 Fee



THE COMMISSIONER OF HIGHWAYS IS HEREBY DESIGNATING THE DEFINITE LOCATION OF TRUNK HIGHWAY NO. 14 FROM 0.5 MILE WEST OF KASSON TO THE EAST COUNTY LINE.

As shown on this plat prepared by the State of Minnesota Department of Highways, is hereby certified as the official plat of that portion of said T.H. 14 within the designated portion of Sections 4 and 33, and the Commissioner's Order therefor, pursuant to Minnesota Laws of 1969, Chapters 207, 208 and 209 (now codified as Minnesota Statutes 1969, section 161.16 subd. 2, section 160.14 subd. 1, and section 160.085 respectively).

Commissioner's Order No.	Location	Nature of Interest
56745	PLATS 20-1 THRU 20-9	Definite location, width, access, temporary easement and building removal easement.

Recommended for Certification: *Frank D. Marzetti* 7-23-75
 Certified: *Frank D. Marzetti* 7-23-75
 R. G. Brennan, Director of R/W Operations
 Date: 7-23-75
 Frank D. Marzetti, Commissioner of Highways
 Date: 7-23-75

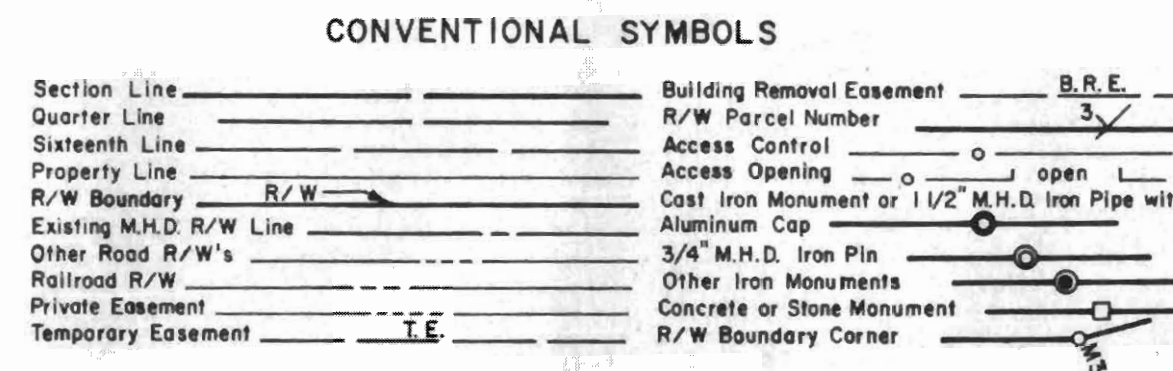
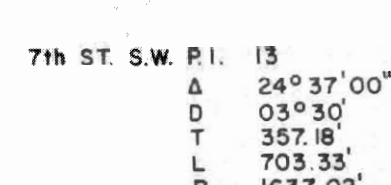
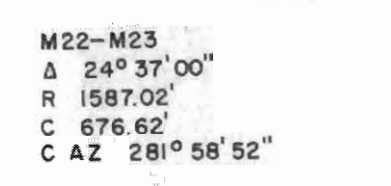
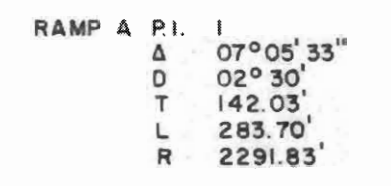
I hereby certify that this plat was prepared by me or under my direct supervision and is a correct representation of said survey; that all distances are horizontal ground distances in feet; that difference between azimuths represent plane angles in degrees, minutes and seconds; that the monuments to delineate this survey have been placed in the ground as shown on the plat; and that the right-of-way boundary lines are designated on the plat.

Certified by *John E. Sullivan* 10460 7-22-75
 Registered Land Surveyor Reg. No. Date

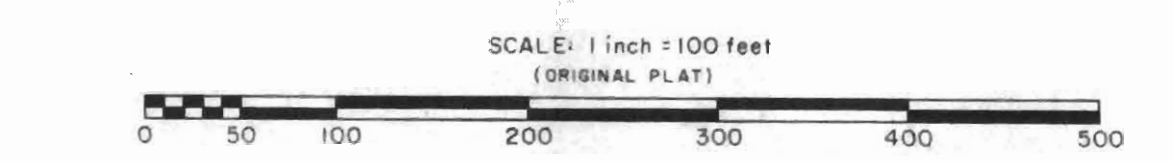
- Survey Standards**
- The plat values, azimuths and distances, are based on the project control survey system.
 - The boundary monuments shown on this plat have been field checked for location. The standard deviation for the monument positions is 0.1 ft.
 - The state plane coordinates shown on one monument are based on ties to national control monuments.
 - Certificates of Location have been filed at the Register of Deeds' Office and/or the County Surveyor's Office for the section corner monuments shown on this plat.
 - For details of this survey contact the Surveying and Mapping Section at the Minnesota Highway Department, ROCHESTER, Name of District.

AZIMUTH ORIENTATION AND GRID CONVERSION

Plat azimuths are oriented to Minnesota State Plane Coordinate System with 0 degrees 0 minutes 0 seconds being "GRID NORTH".
 Plat distances are ground lengths and can be converted to Minnesota State Plane Grid lengths by multiplying Plat distances by 0.9998954



DISTANCES SHOWN TO FEET (66,80 ETC.) ARE EXACT EXTRINSIC VALUES.



L 5-8

DOC. NO. 37369
 OFFICE OF REGISTER OF DEEDS
 DODGE COUNTY, MINN.
 I HEREBY CERTIFY THAT THIS PLAT HAS BEEN FILED IN THIS OFFICE AT 1 O'CLOCK P.M. ON 8-2-75, 1975 IN BOOK OF 19 PAGE
Noyde Fiehoff
 REGISTER