

MINNESOTA DEPARTMENT OF TRANSPORTATION RIGHT OF WAY PLAT NO. 20-20

STATE PROJECT NO. 2001 (14 = 7-45-2)

IN THE NORTHEAST QUARTER OF SECTION 29, T. 107 N., R. 17 W.
DODGE COUNTY, MINNESOTA

THE COMMISSIONER OF TRANSPORTATION IS HEREBY DESIGNATING THE DEFINITE LOCATION OF TRUNK HIGHWAY NO. 14 FROM 2.0 MILES EAST OF THE WEST COUNTY LINE TO 1.3 MILES SOUTHEAST OF TRUNK HIGHWAY NO. 56

As shown on this plat prepared by the State of Minnesota Department of Transportation, is hereby certified as the official plat of that portion of said T.H. 14 within the designated portion of Section 29 and the subd. 1, and section 160.085 and Minnesota Laws of 1976, Chapter 166.

Commissioner's Order No. **62631** Location **Plot 20-12 thru 20-21** Nature of Interest **Definite location, width, access, temporary easement and building removal easement.**

Recommended for Certification: Certified:

R. H. Sullivan 3/30/79 Date
R. H. Sullivan Director of R/W Operations
F. C. Marshall 3/30/79 Date
F. C. Marshall Assistant Commissioner of Transportation

I hereby certify that this plat was prepared by me or under my direct supervision and is a correct representation of said survey; that all distances are horizontal ground distances in feet; that difference between azimuths represent plane angles in degrees, minutes and seconds; that the monuments to delineate this survey have been placed in the ground as shown on the plat; and that the right-of-way boundary lines are designated on the plat.

Certified by *John E. Suenen* 10460 3-27-79
Registered Land Surveyor Reg. No. Date

AZIMUTH ORIENTATION AND GRID CONVERSION

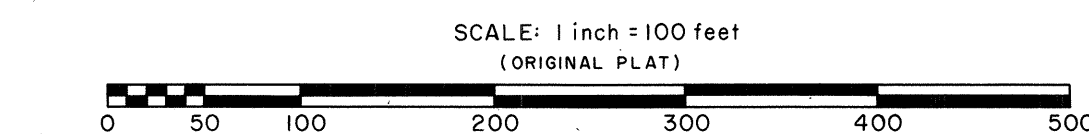
Plat azimuths are oriented to Minnesota State Plane Coordinate System with 0 degrees 0 minutes 0 seconds being "GRID NORTH".

Plat distances are ground lengths and can be converted to Minnesota State Plane Grid lengths by multiplying Plat distances by 0.9998936

CONVENTIONAL SYMBOLS

Section Line	Building Removal Easement	B.R.E.
Quarter Line	R/W Parcel Number	3
Sixteenth Line	Access Control	o
Property Line	Access Opening	o
R/W Boundary	Cast Iron Monument or 1/2" M.H.D. Iron Pipe with Aluminum Cap	o
Existing M.H.D. R/W Line	3/4" M.H.D. Iron Pin	o
Other Road R/W's	Other Iron Monuments	o
Railroad R/W	Concrete or Stone Monument	o
Private Easement	R/W Boundary Corner	o
Temporary Easement	T.E.	o

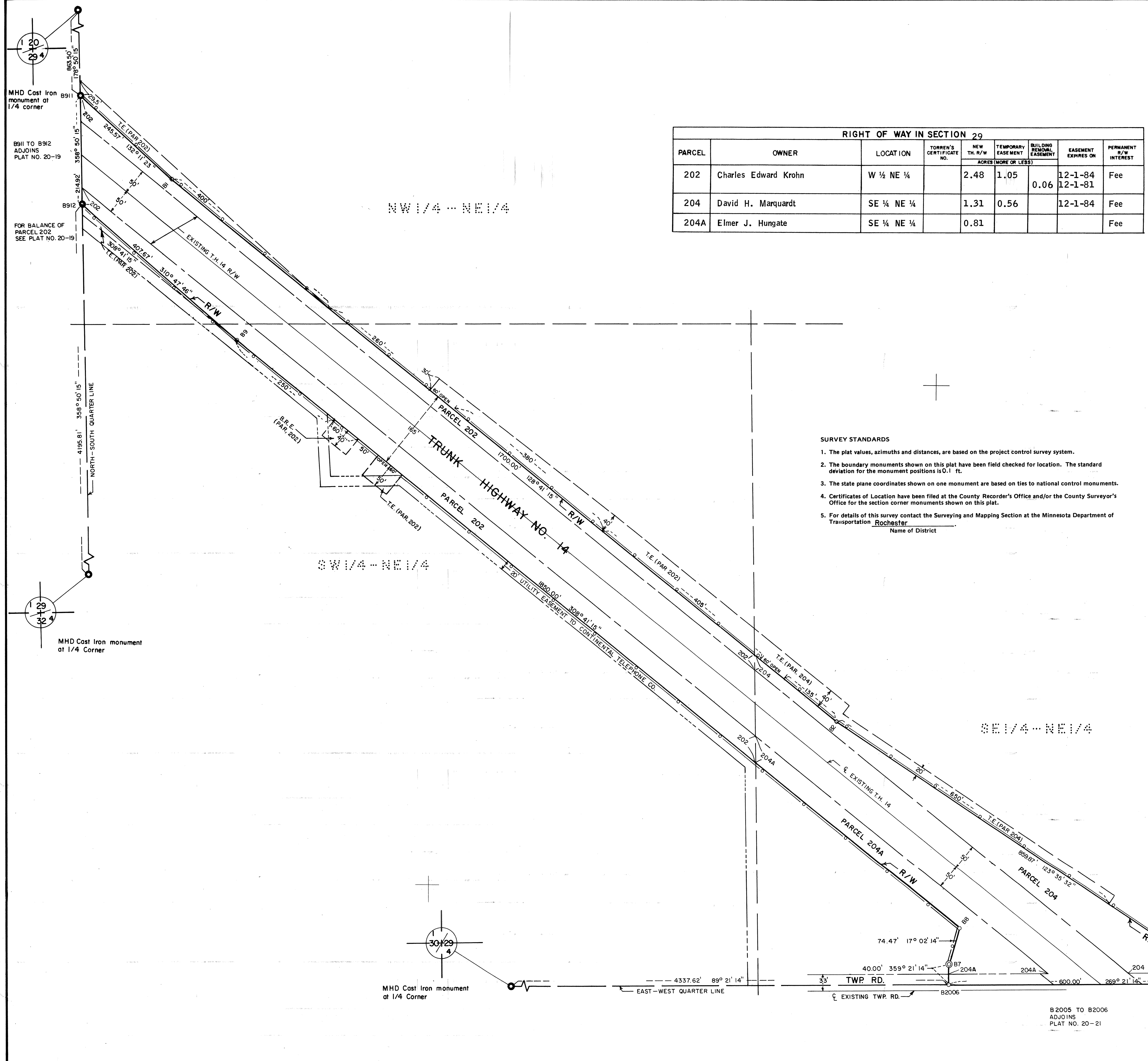
DISTANCES SHOWN TO FEET (66, 80 ETC.) ARE EXACT EXTRINSIC VALUES.



RIGHT OF WAY IN SECTION 29								
PARCEL	OWNER	LOCATION	TORREN'S CERTIFICATE NO.	NEW TH. R/W ACRES (MORE OR LESS)	TEMPORARY EASEMENT	BUILDING REMOVAL EASEMENT	EASEMENT EXPIRES ON	PERMANENT R/W INTEREST
202	Charles Edward Krohn	W 1/2 NE 1/4		2.48	1.05	0.06	12-1-84 12-1-81	Fee
204	David H. Marquardt	SE 1/4 NE 1/4		1.31	0.56		12-1-84	Fee
204A	Elmer J. Hungate	SE 1/4 NE 1/4		0.81				Fee

SURVEY STANDARDS

- The plat values, azimuths and distances, are based on the project control survey system.
- The boundary monuments shown on this plat have been field checked for location. The standard deviation for the monument positions is 0.1 ft.
- The state plane coordinates shown on one monument are based on ties to national control monuments.
- Certificates of Location have been filed at the County Recorder's Office and/or the County Surveyor's Office for the section corner monuments shown on this plat.
- For details of this survey contact the Surveying and Mapping Section at the Minnesota Department of Transportation Rochester Name of District



SE 1/4 - NE 1/4

M.H.D. Cast Iron monument at 1/4 Corner
Minn. State Plane Coord., South Zone
X = 2,294,735.07
Y = 382,781.39

DOC. NO. 48048
OFFICE OF COUNTY RECORDER
DODGE COUNTY, MINN.
I HEREBY CERTIFY THAT THIS PLAT HAS BEEN FILED IN THIS OFFICE AT 4:30 O'CLOCK P.M. ON APRIL 10, 1979 IN BOOK OF PAGE COUNTY RECORDER

PLAT NO. 20-20
S.P. 2001(14 = 7-45-2)

B 2005 TO B2006
ADJOINS
PLAT NO. 20-21