

MINNESOTA DEPARTMENT OF TRANSPORTATION RIGHT OF WAY PLAT No. 20-21

STATE PROJECT NO. 2001 (14 = 7 - 45 - 2)

IN THE SOUTHEAST QUARTER OF SECTION 29, T. 107 N., R. 17 W. AND
IN THE SOUTHWEST QUARTER OF SECTION 28, T. 107 N., R. 17 W.
DODGE COUNTY, MINNESOTA

THE COMMISSIONER OF TRANSPORTATION IS HEREBY DESIGNATING THE DEFINITE
LOCATION OF TRUNK HIGHWAY NO. 14 FROM 2.0 MILES EAST OF THE WEST
COUNTRY LINE TO 1.3 MILES SOUTHEAST OF TRUNK HIGHWAY NO. 56

As shown on this plat prepared by the State of Minnesota Department of Transportation is hereby certified as
the official plat of that portion of said T.H. 14 within the designated portion of Sections 28 and 29
and the Commissioner's Order therefor, pursuant to Minnesota Statutes 1989, section 161.16 subd. 2, section
160.14 subd. 1, and section 160.085 and Minnesota Laws of 1976, Chapter 166.

Commissioner's Order No.	Location	Nature of Interest
62631	Plot 20-12 thru 20-21	Definite location, width, access, temporary ease- ment and building removal easement.

Recommended for Certification: Certified:

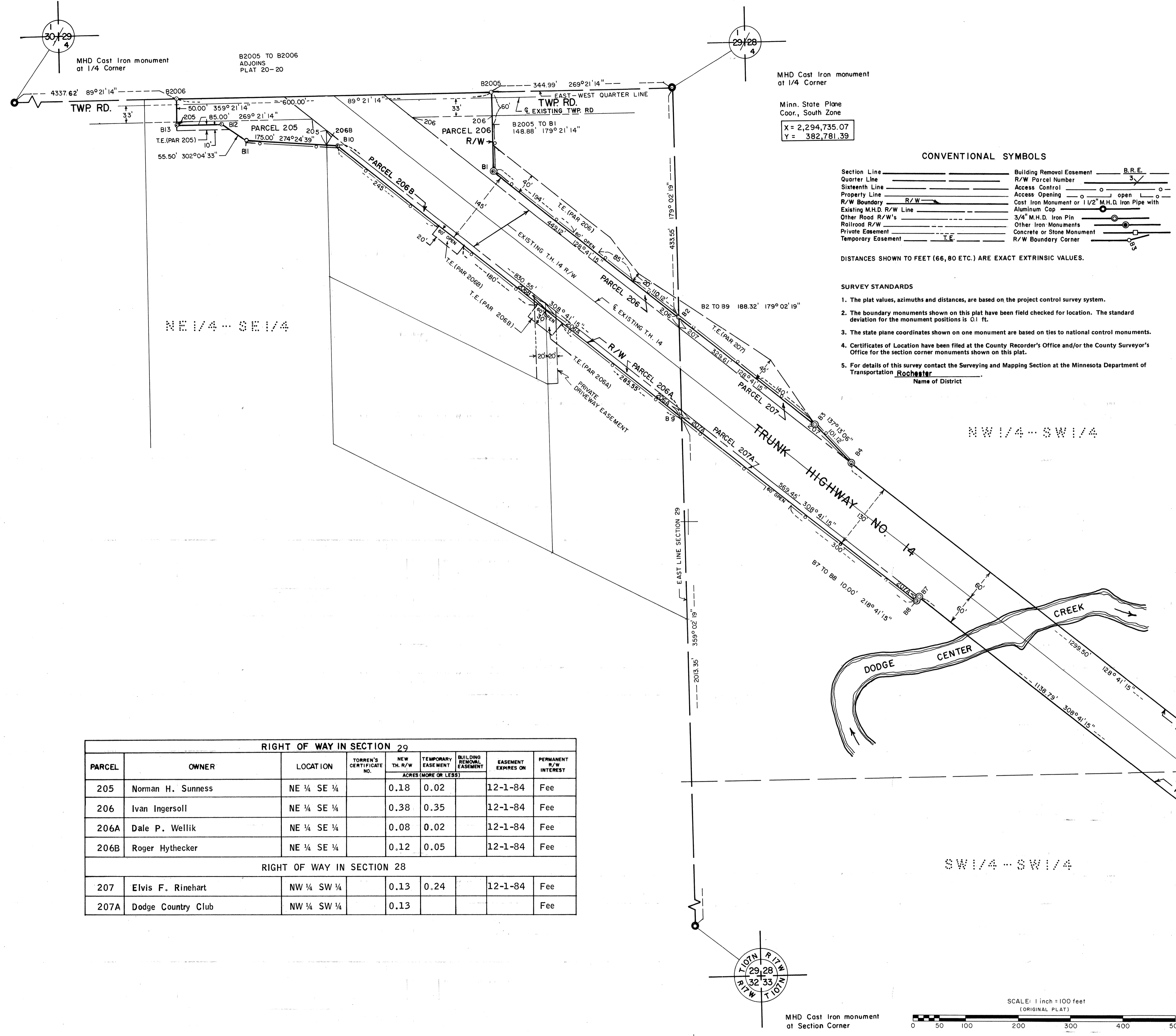
Richard F. Braun
Commissioner of Transportation
Date: 3/30/79
F. C. Marshall
Assistant Commissioner of Transportation
Date: 3/30/79

I hereby certify that this plat was prepared by me or under my direct supervision and is a correct representation
of said survey; that all distances are horizontal ground distances in feet that difference between azimuths represent
plane angles in degrees, minutes and seconds; that the monuments to delineate this survey have been placed
in the ground as shown on the plat; and that the right-of-way boundary lines are designated on the plat.

Certified by: John E. Sullivan 10460 3-27-79
Registered Land Surveyor Reg. No. Date

AZIMUTH ORIENTATION AND GRID CONVERSION

Plat azimuths are oriented to Minnesota State Plane Coordinate System with 0 degrees
0 minutes 0 seconds being "GRID NORTH".
Plat distances are ground lengths and can be converted to Minnesota State Plane Grid
lengths by multiplying Plat distances by 0.9998936



MHD Cast Iron monument
at 1/4 Corner
Minn. State Plane
Coor., South Zone
X = 2,294,735.07
Y = 382,781.39

CONVENTIONAL SYMBOLS

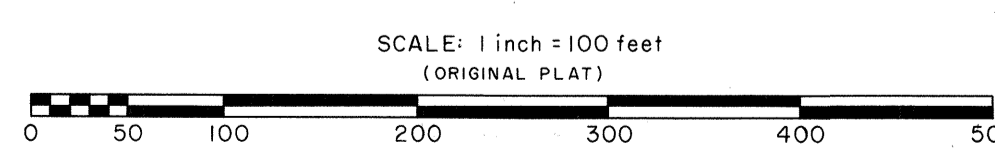
Section Line	Building Removal Easement	B.R.E.
Quarter Line	R/W Parcel Number	3
Sixteenth Line	Access Control	○
Property Line	Access Opening	○
R/W Boundary	Cast Iron Monument or 1 1/2" M.H.D. Iron Pipe with Aluminum Cap	○
Existing M.H.D. R/W Line	3/4" M.H.D. Iron Pin	○
Other Road R/W's	Other Iron Monuments	○
Railroad R/W	Concrete or Stone Monument	○
Private Easement	R/W Boundary Corner	○
Temporary Easement		

DISTANCES SHOWN TO FEET (66, 80 ETC.) ARE EXACT EXTRINSIC VALUES.

SURVEY STANDARDS

- The plat values, azimuths and distances, are based on the project control survey system.
- The boundary monuments shown on this plat have been field checked for location. The standard deviation for the monument positions is 0.1 ft.
- The state plane coordinates shown on one monument are based on ties to national control monuments.
- Certificates of Location have been filed at the County Recorder's Office and/or the County Surveyor's Office for the section corner monuments shown on this plat.
- For details of this survey contact the Surveying and Mapping Section at the Minnesota Department of Transportation, Rochester.

RIGHT OF WAY IN SECTION 29							
PARCEL	OWNER	LOCATION	TORREN'S CERTIFICATE NO.	NEW TH. R/W ACRES (MORE OR LESS)	TEMPORARY EASEMENT	BUILDING REMOVAL EASEMENT	PERMANENT R/W INTEREST
205	Norman H. Sunness	NE 1/4 SE 1/4		0.18	0.02		Fee
206	Ivan Ingersoll	NE 1/4 SE 1/4		0.38	0.35		Fee
206A	Dale P. Wellik	NE 1/4 SE 1/4		0.08	0.02		Fee
206B	Roger Hythecker	NE 1/4 SE 1/4		0.12	0.05		Fee
RIGHT OF WAY IN SECTION 28							
207	Elvis F. Rinehart	NW 1/4 SW 1/4		0.13	0.24		Fee
207A	Dodge Country Club	NW 1/4 SW 1/4		0.13			Fee



DOC. NO. 48049
OFFICE OF COUNTY RECORDER
DODGE COUNTY, MINN.
I HEREBY CERTIFY THAT THIS PLAT
HAS BEEN FILED IN THIS OFFICE
AT 4:30 O'CLOCK P.M. ON
APRIL 10, 1979. IN
BOOK OF PAGE
COUNTY RECORDER

PLAT NO. 20-21
S.F. 2001 (14 = 7 - 45 - 2)