

# MINNESOTA DEPARTMENT OF TRANSPORTATION RIGHT OF WAY PLAT NO. 20-23

STATE PROJECT NO. 2006(56-56-21-1)  
IN THE EAST HALF OF SECTION 19, T. 108 N., R. 17 W., AND  
THE WEST HALF OF SECTION 20, T. 108 N., R. 17 W.  
DODGE COUNTY, MINNESOTA

THE COMMISSIONER OF TRANSPORTATION IS HEREBY DESIGNATING THE DEFINITE  
LOCATION OF TRUNK HIGHWAY NO. 56 FROM DODGE CENTER TO THE WEST JUNCTION WITH  
TRUNK HIGHWAY NO. 14.

As shown on this plat, prepared by the State of Minnesota Department of Transportation as hereby certified as  
the official plat of that portion of road 14, 56 within the designated portion of Sections 19 & 20  
and the Commissioner's Order therefor, pursuant to Minnesota Statutes, section 161.16 subd. 2, section  
161.14 Subd. 1, and section 161.065.

Commissioner's Order No. **68021** Location **PLATS 20-23 THRU 20-29** Nature of Interest: **Definite location, width, access, temporary easement and building removal easement.**

Recommended for Certification: \_\_\_\_\_

Certified: \_\_\_\_\_

Richard P. Brown  
Commissioner of Transportation  
Date: *10-28-83*  
By: *J.C. Marshall*  
Assistant Commissioner of Transportation

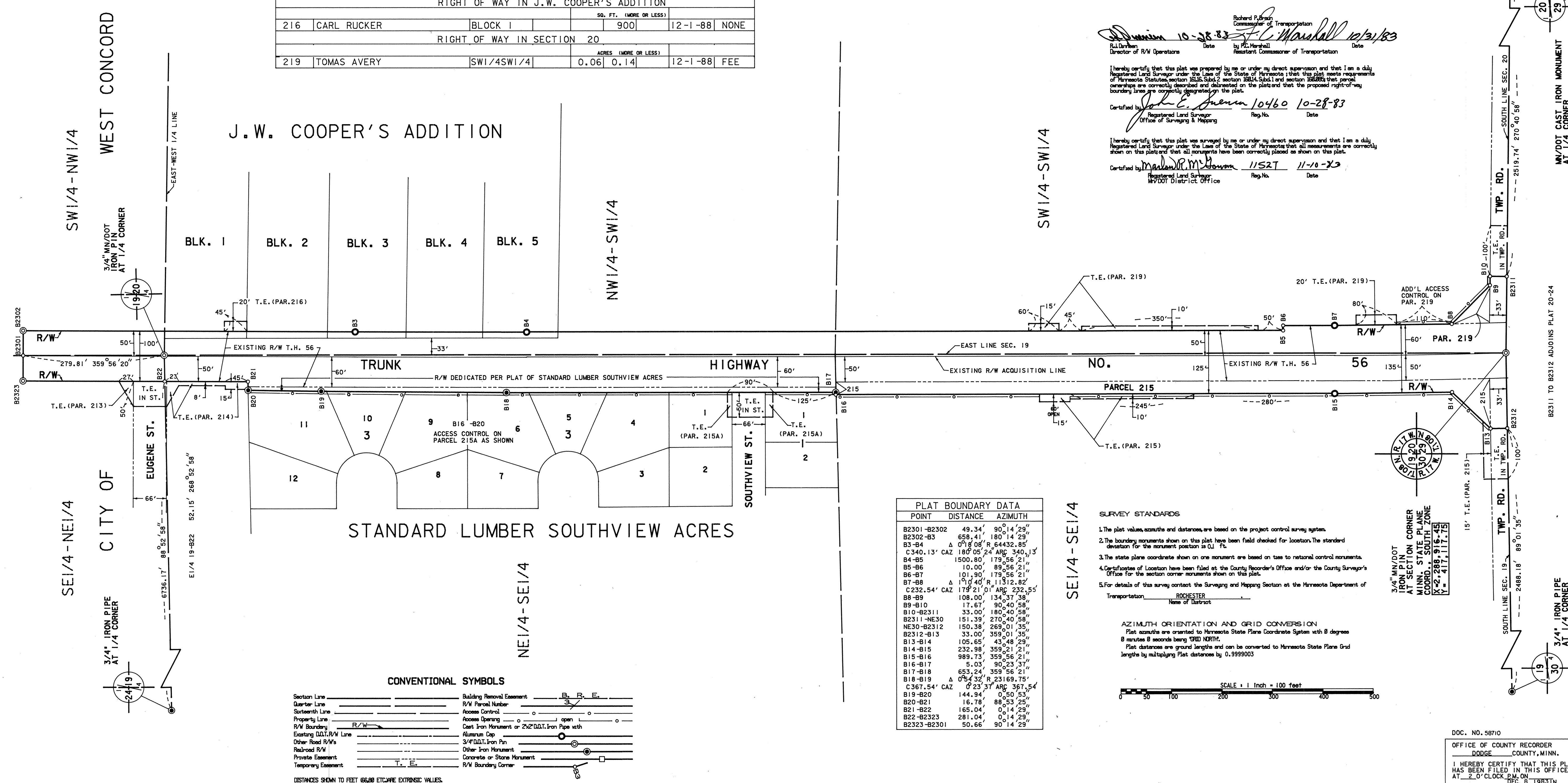
I hereby certify that this plat was prepared by me or under my direct supervision and that I am a duly  
Registered Land Surveyor under the Law of the State of Minnesota; that this plat meets requirements  
of Minnesota Statutes, section 161.16, Subd. 2, section 161.14, Subd. 1 and section 161.065; that parcel  
boundaries are correctly described and delineated on the plat and that the proposed right-of-way  
boundary lines are correctly designated on the plat.

Certified by: *John E. Jensen* 10460 10-28-83  
Registered Land Surveyor  
Office of Surveying & Mapping

I hereby certify that this plat was surveyed by me or under my direct supervision and that I am a duly  
Registered Land Surveyor under the Law of the State of Minnesota; that all measurements are correctly  
shown on this plat and that all monuments have been correctly placed as shown on this plat.

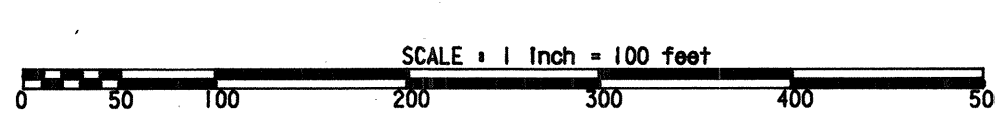
Certified by: *M.D. Remy* 11527 11-10-83  
Registered Land Surveyor  
MNDOT District Office

RIGHT OF WAY IN SECTION 19								
PARCEL	OWNER	LOCATION	TORREN'S CERTIFICATE NO.	NEW T.H. R/W ACRES (MORE OR LESS)	TEMPORARY EASEMENT ACRES (MORE OR LESS)	BUILDING REMOVAL EASEMENT	EASEMENT EXPIRES ON	PERMANENT R/W INTEREST
213	INDEPENDENT SCHOOL DISTRICT NO. 205	SE1/4NE1/4			0.02		12-1-88	NONE
214	ETHEL MAE QUIMBY	NE1/4SE1/4			0.05		12-1-88	NONE
215	LOWELL HETLETVEDT	SE1/4SE1/4		0.81	0.11		12-1-88	FEE
RIGHT OF WAY IN STANDARD LUMBER SOUTHVIEW ACRES								
215A	STANDARD LUMBER COMPANY	LOT 1 BLK. 1 LOTS 1,4,5,6,9,10 & 11 BLOCK 3			1200		12-1-88	ACCESS
RIGHT OF WAY IN J.W. COOPER'S ADDITION								
216	CARL RUCKER	BLOCK 1			900		12-1-88	NONE
RIGHT OF WAY IN SECTION 20								
219	TOMAS AVERY	SW1/4SW1/4		0.06	0.14		12-1-88	FEE



PLAT BOUNDARY DATA		
POINT	DISTANCE	AZIMUTH
B2301-B2302	49.34'	90° 14' 29"
B2302-B3	658.41'	180° 14' 29"
B3-B4	0° 0' 06" R	64432.85'
B4-B5	1500.80'	179° 56' 21"
B5-B6	10.00'	89° 56' 21"
B6-B7	101.90'	179° 56' 21"
B7-B8	179° 40' R	11312.82'
B8-B9	108.00'	134° 37' 38"
B9-B10	17.67'	90° 40' 58"
B10-B2311	33.00'	180° 40' 58"
B2311-NE30	151.39'	270° 40' 58"
NE30-B2312	150.38'	269° 01' 35"
B2312-B13	33.00'	359° 01' 35"
B13-B14	105.65'	43° 48' 29"
B14-B15	232.98'	359° 21' 21"
B15-B16	989.73'	359° 56' 21"
B16-B17	5.03'	90° 23' 37"
B17-B18	653.24'	359° 56' 21"
B18-B19	0° 54' 32" R	23169.75'
B19-B20	144.94'	0° 50' 53"
B20-B21	16.78'	88° 53' 25"
B21-B22	165.04'	0° 14' 29"
B22-B2323	281.04'	0° 14' 29"
B2323-B2301	50.66'	90° 14' 29"

- SURVEY STANDARDS**
- The plat values, azimuths and distances are based on the project control survey system.
  - The boundary monuments shown on this plat have been field checked for location. The standard deviation for the monument position is 0.1'.
  - The state plane coordinate shown on one monument are based on ties to national control monuments.
  - Certificates of Location have been filed at the County Recorder's Office and/or the County Surveyor's Office for the section corner monuments shown on this plat.
  - For details of this survey contact the Surveying and Mapping Section at the Minnesota Department of Transportation, ROCHESTER, Name of District.
- AZIMUTH ORIENTATION AND GRID CONVERSION**  
Plat azimuths are oriented to Minnesota State Plane Coordinate System with 0 degrees 0 minutes 0 seconds being GRID NORTH.  
Plat distances are ground lengths and can be converted to Minnesota State Plane Grid lengths by multiplying Plat distances by 0.9999003



**CONVENTIONAL SYMBOLS**

Section Line	Building Removal Easement	B <sub>r</sub> R <sub>r</sub> E <sub>r</sub>
Quarter Line	R/W Parcel Number	3
Sixteenth Line	Access Control	○
Property Line	Access Opening	○
R/W Boundary	Cast Iron Monument or 2x2 D.O.T. Iron Pipe with	○
Existing D.O.T. R/W Line	Aluminum Cap	○
Other Road R/W's	3/4" D.O.T. Iron Pin	○
Roadbed R/W	Other Iron Monument	○
Private Easement	Concrete or Stone Monument	○
Temporary Easement	R/W Boundary Corner	○

DISTANCES SHOWN TO FEET 66.66 ETC. ARE EXTRINSIC VALUES.

DOC. NO. 58710  
OFFICE OF COUNTY RECORDER  
DODGE COUNTY, MINN.  
I HEREBY CERTIFY THAT THIS PLAT  
HAS BEEN FILED IN THIS OFFICE  
AT 2:07 CLOCK P.M. ON  
DEC. 8, 1983 IN  
BOOK OF \_\_\_\_\_ PAGE \_\_\_\_\_  
COUNTY RECORDER