

# MINNESOTA DEPARTMENT OF TRANSPORTATION RIGHT OF WAY PLAT NO. 20-28

STATE PROJECT NO. 2006(56-56-21-1)  
IN THE WEST HALF OF SECTION 17, T. 107 N., R. 17 W., AND  
THE EAST HALF OF SECTION 18, T. 107 N., R. 17 W.,  
DODGE COUNTY, MINNESOTA

THE COMMISSIONER OF TRANSPORTATION IS HEREBY DESIGNATING THE DEFINITE  
LOCATION OF TRUNK HIGHWAY NO. 56 FROM DODGE CENTER TO WEST  
JUNCTION OF TRUNK HIGHWAY NO. 14

As shown on this plat prepared by the State of Minnesota Department of Transportation is hereby certified as  
the official plat of that portion of said 141.56 acres within the designated portion of Sections 17 and 18  
and the Commissioner's Order therefor, pursuant to Minnesota Statutes, section 361.16 subd. 2, section  
168.14 Subd. 1, and section 168.05.

Commissioner's Order No.	Location	Nature of Interest
68021	PLATS 20-23 THRU 20-29	Definite location, width, access, temporary easement and building removal easement.

Recommended for Certification: \_\_\_\_\_ Certified: \_\_\_\_\_

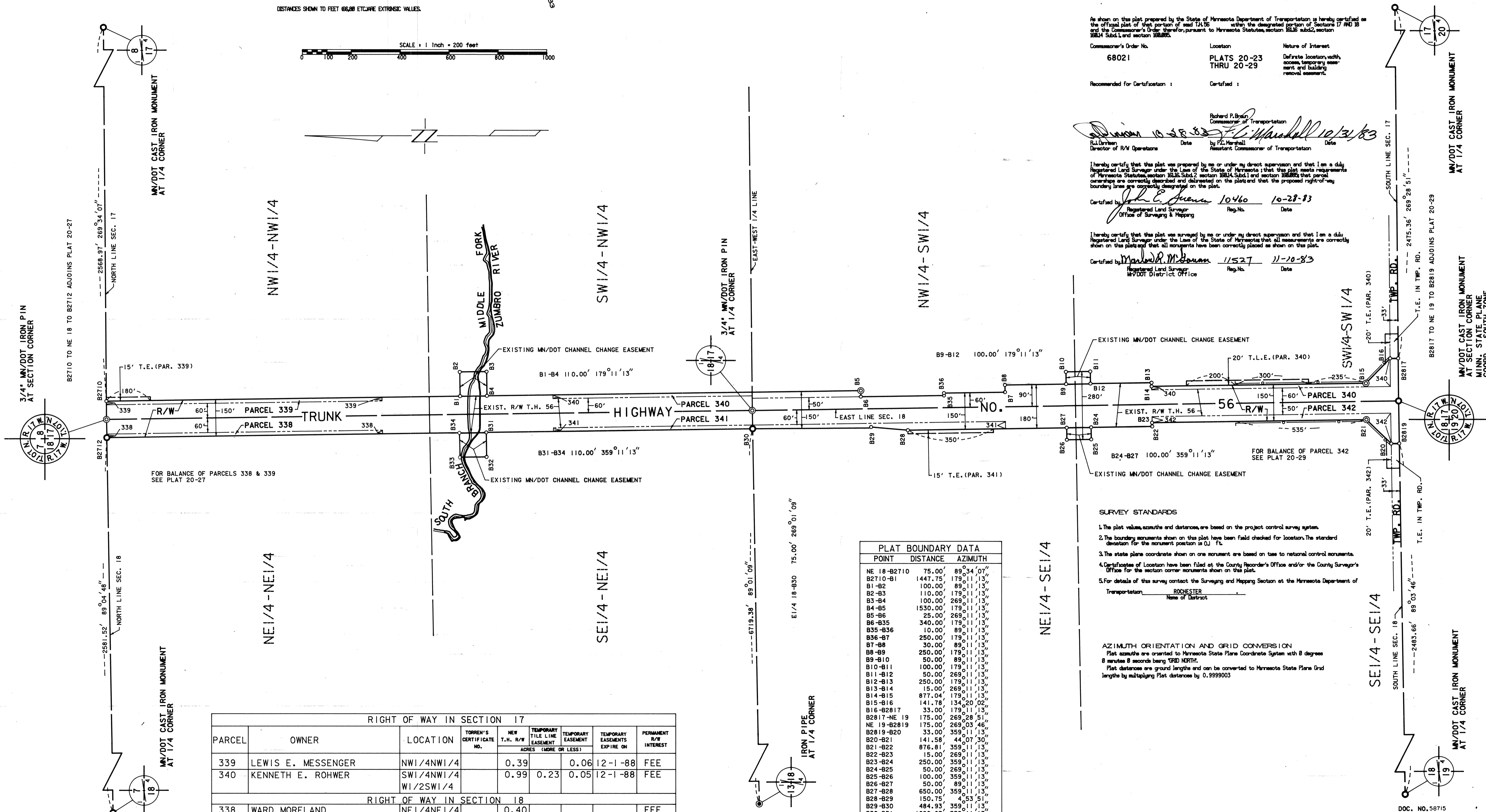
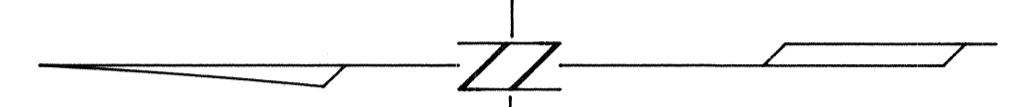
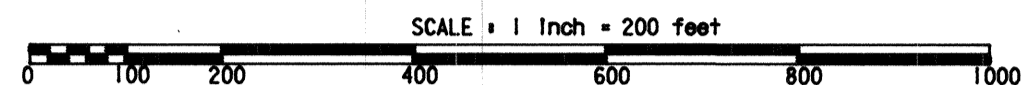
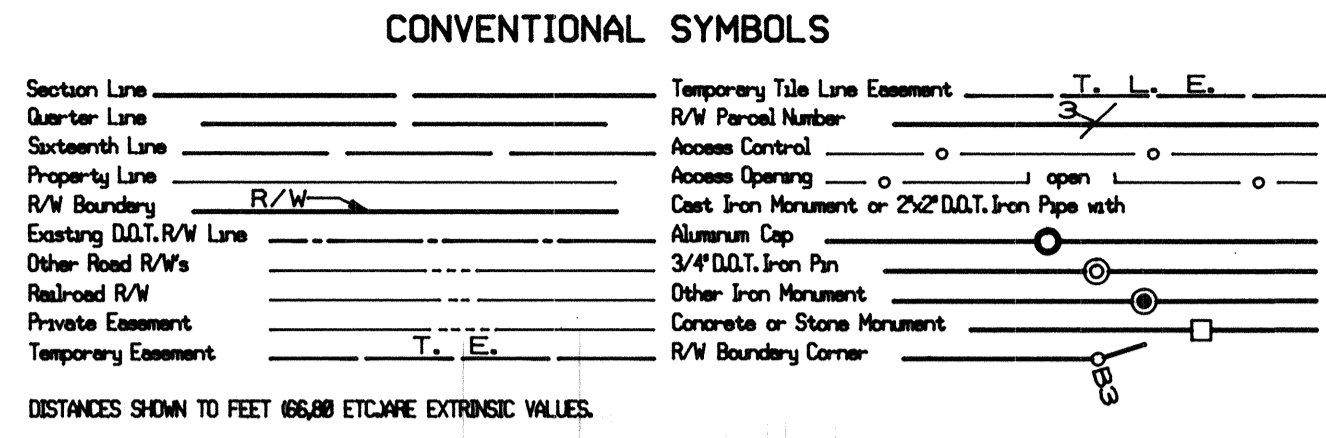
Richard P. Bryan  
Commissioner of Transportation  
Date: 10/31/83  
by: P. Marshall  
Assistant Commissioner of Transportation

I hereby certify that this plat was prepared by me or under my direct supervision and that I am a duly  
Registered Land Surveyor under the Laws of the State of Minnesota and that this plat meets requirements  
of Minnesota Statutes, section 168.16, Subd. 2, section 168.14, Subd. 1, and section 168.05, that parcel  
ownership are correctly described and delineated on the plat and that the proposed right-of-way  
boundary lines are correctly designated on the plat.

Certified by: John E. Jensen 10460 10-28-83  
Registered Land Surveyor Reg. No. Date  
Office of Surveying & Mapping

I hereby certify that this plat was surveyed by me or under my direct supervision and that I am a duly  
Registered Land Surveyor under the Laws of the State of Minnesota and that all measurements are correctly  
shown on this plat and that all monuments have been correctly placed as shown on this plat.

Certified by: Mark D. M. Jensen 11527 11-10-83  
Registered Land Surveyor Reg. No. Date  
Mn/DOT District Office



POINT	DISTANCE	AZIMUTH
NE 18-B2710	75.00'	89°34'07"
B2710-B1	1447.75'	179°11'13"
B1-B2	100.00'	89°11'13"
B2-B3	110.00'	179°11'13"
B3-B4	100.00'	269°11'13"
B4-B5	1530.00'	179°11'13"
B5-B6	25.00'	269°11'13"
B6-B35	340.00'	179°11'13"
B35-B36	10.00'	89°11'13"
B36-B7	250.00'	179°11'13"
B7-B8	30.00'	89°11'13"
B8-B9	250.00'	179°11'13"
B9-B10	50.00'	89°11'13"
B10-B11	100.00'	179°11'13"
B11-B12	50.00'	269°11'13"
B12-B13	250.00'	179°11'13"
B13-B14	15.00'	269°11'13"
B14-B15	817.04'	179°11'13"
B15-B16	141.78'	134°00'02"
B16-B2817	33.00'	179°11'13"
B2817-NE 19	175.00'	269°28'51"
NE 19-B2819	175.00'	269°03'46"
B2819-B20	33.00'	359°11'13"
B20-B21	141.58'	44°07'30"
B21-B22	876.81'	359°11'13"
B22-B23	15.00'	269°11'13"
B23-B24	250.00'	359°11'13"
B24-B25	50.00'	269°11'13"
B25-B26	100.00'	359°11'13"
B26-B27	50.00'	89°11'13"
B27-B28	650.00'	359°11'13"
B28-B29	150.75'	4°55'51"
B29-B30	484.93'	359°11'13"
B30-B31	1090.07'	359°11'13"
B31-B32	100.00'	269°11'13"
B32-B33	110.00'	359°11'13"
B33-B34	100.00'	89°11'13"
B34-B2712	1443.11'	359°11'13"
B2712-NE 18	75.00'	89°04'48"

RIGHT OF WAY IN SECTION 17							
PARCEL	OWNER	LOCATION	TORRENS' CERTIFICATE NO.	NEW T.N. R/W ACRES (MORE OR LESS)	TEMPORARY EASEMENT EXPIRE ON	PERMANENT R/W INTEREST	
339	LEWIS E. MESSENGER	NW1/4NW1/4		0.39	0.06	12-1-88	FEE
340	KENNETH E. ROHWER	SW1/4NW1/4 W1/2SW1/4		0.99	0.23	0.05	12-1-88 FEE
RIGHT OF WAY IN SECTION 18							
338	WARD MORELAND	NE1/4NE1/4		0.40			FEE
341	ROY M. LANGWORTHY	SE1/4NE1/4 NE1/4SE1/4		0.84	0.12	12-1-88	FEE
342	ALBERT PISKE	SE1/4SE1/4		0.68	0.05	12-1-88	FEE

- SURVEY STANDARDS**
- The plat values, azimuths and distances, are based on the project control survey system.
  - The boundary monuments shown on this plat have been field checked for location. The standard deviation for the monument position is 0.1 ft.
  - The state plane coordinate shown on one monument are based on ties to national control monuments.
  - Certificates of Location have been filed at the County Recorder's Office and/or the County Surveyor's Office for the section corner monuments shown on this plat.
  - For details of this survey contact the Surveying and Mapping Section at the Minnesota Department of Transportation, ROCHESTER, Name of District

**AZIMUTH ORIENTATION AND GRID CONVERSION**  
Plat azimuths are oriented to Minnesota State Plane Coordinate System with 8 degrees 8 minutes 8 seconds being TRUE NORTH.  
Plat distances are ground lengths and can be converted to Minnesota State Plane Grid lengths by multiplying Plat distances by 0.9999003

DOC. NO. 58715  
OFFICE OF COUNTY RECORDER  
DODGE COUNTY, MINN.  
I HEREBY CERTIFY THAT THIS PLAT  
HAS BEEN FILED IN THIS OFFICE  
AT 2:07 CLOCK P.M. ON  
DEC. 8, 1983 IN  
BOOK OF \_\_\_\_\_ PAGE \_\_\_\_\_  
COUNTY RECORDER