

# STATE HIGHWAY RIGHT OF WAY PLAT No. 20-3

STATE PROJECT 2007 (57-57) 902  
STATE PROJECT 2002 (14-7) 901

IN THE SOUTH HALF OF SECTION 33, T. 107 N., R. 16 W.  
DODGE COUNTY, MINNESOTA

THE COMMISSIONER OF HIGHWAYS IS HEREBY DESIGNATING THE DEFINITE LOCATION OF TRUNK HIGHWAY NO. 14 FROM 0.5 MILE WEST OF KASSON TO THE EAST COUNTY LINE AND TRUNK HIGHWAY NO. 57 FROM EXISTING TRUNK HIGHWAY 14 TO NEW TRUNK HIGHWAY 14

As shown on this plat prepared by the State of Minnesota Department of Highways, is hereby certified as the official plat of that portion of said T.H. 14 and T.H. 57 within the designated portion of Section 33 the Commissioner's Order therefor, pursuant to Minnesota Laws of 1969, Chapters 207, 208 and 209 (now codified as Minnesota Statutes 1969, section 161.16 subd. 2, section 160.14 subd. 1, and section 160.085 respectively).

Commissioner's Order No.	Location	Nature of Interest
56745	plats 20-1 thru 20-9	Definite location, width, access, temporary easement and building removal easement.

Recommended for Certification: *John E. Suenen* Date: 7-23-75  
Director of R/W Operations

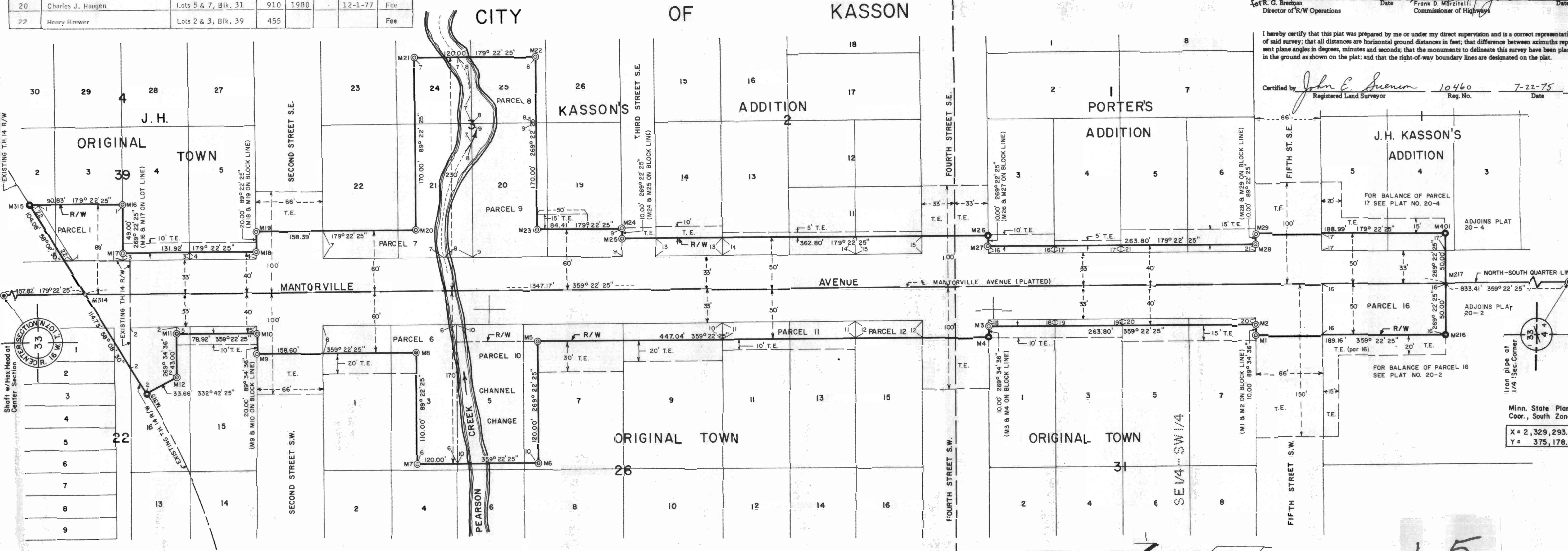
Certified: *Frank D. Merzetti* Date: 7-23-75  
Commissioner of Highways

I hereby certify that this plat was prepared by me or under my direct supervision and is a correct representation of said survey; that all distances are horizontal ground distances in feet; that difference between azimuths represent plane angles in degrees, minutes and seconds; that the monuments to delineate this survey have been placed in the ground as shown on the plat; and that the right-of-way boundary lines are designated on the plat.

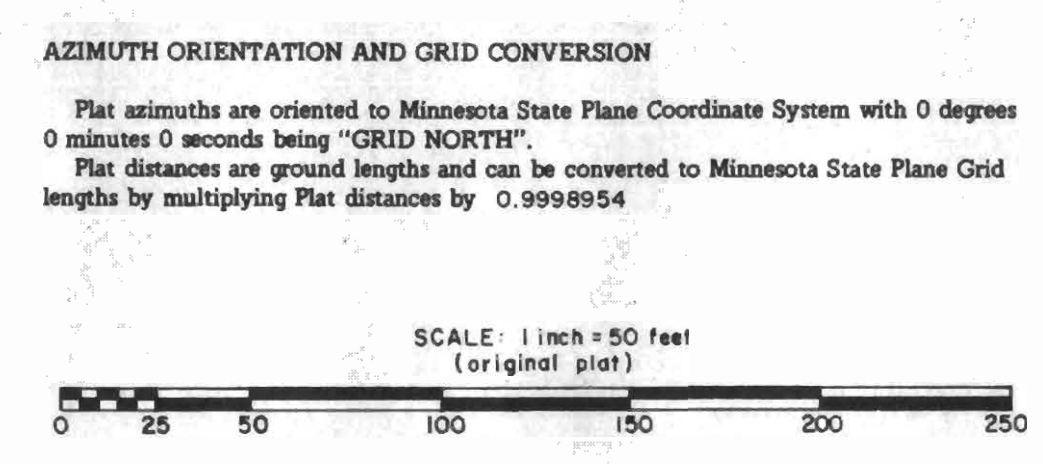
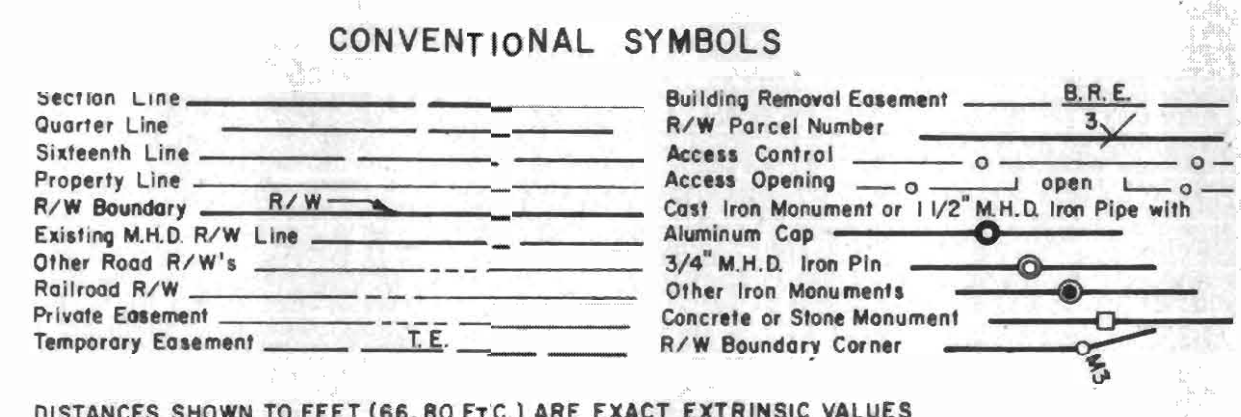
Certified by *John E. Suenen* 10460 7-22-75  
Registered Land Surveyor Reg. No. Date

RIGHT OF WAY IN SECTION 33						
PARCEL	OWNER	LOCATION	NEW TR. R/W ACRES (MORE OR LESS)	TEMPORARY EASEMENT ACRES (MORE OR LESS)	EXISTING EASEMENT	PLAT NO.
S.P. 2002 (14-7) 901						
16	Erlan Moen	SE 1/4 SW 1/4	0.31	0.08	12-1-77	Fee
J. H. Kasson's Addition						
17	Robert E. O'Brien	Block 1	2130	2440	12-1-77	Fee
S.P. 2007 (57-57) 902						
ORIGINAL TOWNSITE OF KASSON						
1	Ida Mae Hemstock	Lots 2 & 3, Blk. 39	4032			Fee
2	Patterson Motor Co.	Lot 16, Blk. 22	2684			Fee
3	Vergel Hoffman	Lot 4, Blk. 39	462	660	12-1-77	Fee
4	Janice E. Green	Lot 5, Blk. 39	462	660	12-1-77	Fee
5	Stone G. Johnson	Lot 15 & 16, Blk. 22	533	790	12-1-77	Fee
6	Duane M. Johnson	Lots 1 & 3, Blk. 26	7744	1880	12-1-77	Fee
10	Village of Kasson	Lots 5, 7 & 9, Blk. 26	4591	4485	12-1-77	Fee Ch. Clg.
11	Myron F. Sell	Lots 11 & 13, Blk. 26	2244	1320	12-1-77	Fee
12	Clifford W. Anderson	Lot 15, Blk. 26	1122			Fee
18	Jerry Struthers	Lot 1, Blk. 31	462	660	12-1-77	Fee
19	Samuel C. Johnson	Lots 3 & 5, Blk. 31	476	680	12-1-77	Fee
20	Charles J. Haugen	Lots 5 & 7, Blk. 31	910	1980	12-1-77	Fee
22	Henry Brewer	Lots 2 & 3, Blk. 39	455			Fee

RIGHT OF WAY IN SECTION 33						
PARCEL	OWNER	LOCATION	NEW TR. R/W ACRES (MORE OR LESS)	TEMPORARY EASEMENT ACRES (MORE OR LESS)	EXISTING EASEMENT	PLAT NO.
S.P. 2007 (57-57) 902						
J. H. KASSON'S ADDITION						
7	Village of Kasson	Lots 21, 22 & 24, Blk. 3	9945			Fee
8	Melbourne Jensen	Lots 21, 24 & 25, Blk. 3	7548			Fee
9	Vernon E. Iverson	Lots 19 & 20, Blk. 3	10640	750	12-1-77	Fee
13	Clair E. Lienau	Lot 14, Blk. 2	1122	660	12-1-77	Fee
14	Avriel Dean	Lots 11 & 13, Blk. 2	2244	660	12-1-77	Fee
15	Leon E. Dahle	Lot 11, Blk. 2	1122	330	12-1-77	Fee
W. E. PORTER'S ADDITION TO KASSON						
16	Willie Lee	Lot 3, Blk. 1	462	660	12-1-77	Fee
17	Theodore H. Fjerstad	Lot 4, Blk. 1	462	330	12-1-77	Fee
21	Howard E. Head	Lots 5 & 6, Blk. 1	924	1980	12-1-77	Fee



- Survey Standards**
- The plat values, azimuths and distances, are based on the project control survey system.
  - The boundary monuments shown on this plat have been field checked for location. The standard deviation for the monument positions is 0.1 ft.
  - The state plane coordinates shown on one monument are based on ties to national control monuments.
  - Certificates of Location have been filed at the Register of Deeds' Office and/or the County Surveyor's Office for the section corner monuments shown on this plat.
  - For details of this survey contact the Surveying and Mapping Section at the Minnesota Highway Department, ROCHESTER, Name of District.



DOC. NO. 37370  
OFFICE OF REGISTER OF DEEDS  
DODGE COUNTY, MINN.  
I HEREBY CERTIFY THAT THIS PLAT HAS BEEN FILED IN THIS OFFICE AT 1 O'CLOCK P.M. ON JUL 23 1975 IN BOOK OF PAGE REGISTER OF DEEDS