

MINNESOTA DEPARTMENT OF TRANSPORTATION RIGHT OF WAY PLAT NO. 20-30

STATE PROJECT NO. 2007 (57-57-21)
IN THE SOUTHWEST QUARTER OF SECTION 16, T. 107 N., R. 16 W.,
IN THE NORTHWEST QUARTER OF SECTION 21, T. 107 N., R. 16 W.,
DODGE COUNTY, MINNESOTA

THE COMMISSIONER OF TRANSPORTATION IS HEREBY DESIGNATING THE DEFINITE
LOCATION OF TRUNK HIGHWAY NO. 57 FROM MAIN STREET IN MANTORVILLE
TO 0.25 MILES SOUTHEAST

as shown on this plat prepared by the State of Minnesota Department of Transportation is hereby certified as
the official plat of that portion of said T.H. 57 within the designated portion of Section 21
and the Commissioner's Order therefor pursuant to Minnesota Statutes, section 160.085, section
160.14 subd. 1, section 161.16 subd. 2, and section 161.16.

Commissioner's Order No.	Location	Nature of Interest
81081	PLAT 20-30	Definite location, width, access, temporary ease- ment and building removal easement.

Certified by
James N. Denn
Commissioner of Transportation
by *J. Ellen Liden* 6-26-95
Date
by K.F. Rasmussen
Director, Office of Right of Way and Surveys

I hereby certify that this plat was prepared by me or under my direct supervision and that I am a duly
Registered Land Surveyor under the Laws of the State of Minnesota, that this plat meets requirements
of Minnesota Statutes, section 160.085, section 160.14 subd. 1, section 161.16 subd. 2, and section 161.18,
that parcel ownerships are correctly described and delineated on the plat, and that the proposed right-of-way
boundary lines are correctly designated on the plat.

Certified by *David K. Kromer* 12042 6-26-95
Registered Land Surveyor License No. Date
Office of Right of Way and Surveys

I hereby certify that this plat was surveyed by me or under my direct supervision and that I am a duly
Registered Land Surveyor under the Laws of the State of Minnesota, that all measurements are correctly
shown on this plat, and that all monuments have been correctly placed as shown on this plat.

Certified by *Eugene A. Manburger* 21357 6-30-95
Registered Land Surveyor License No. Date
Mantorville District Office

CONVENTIONAL SYMBOLS

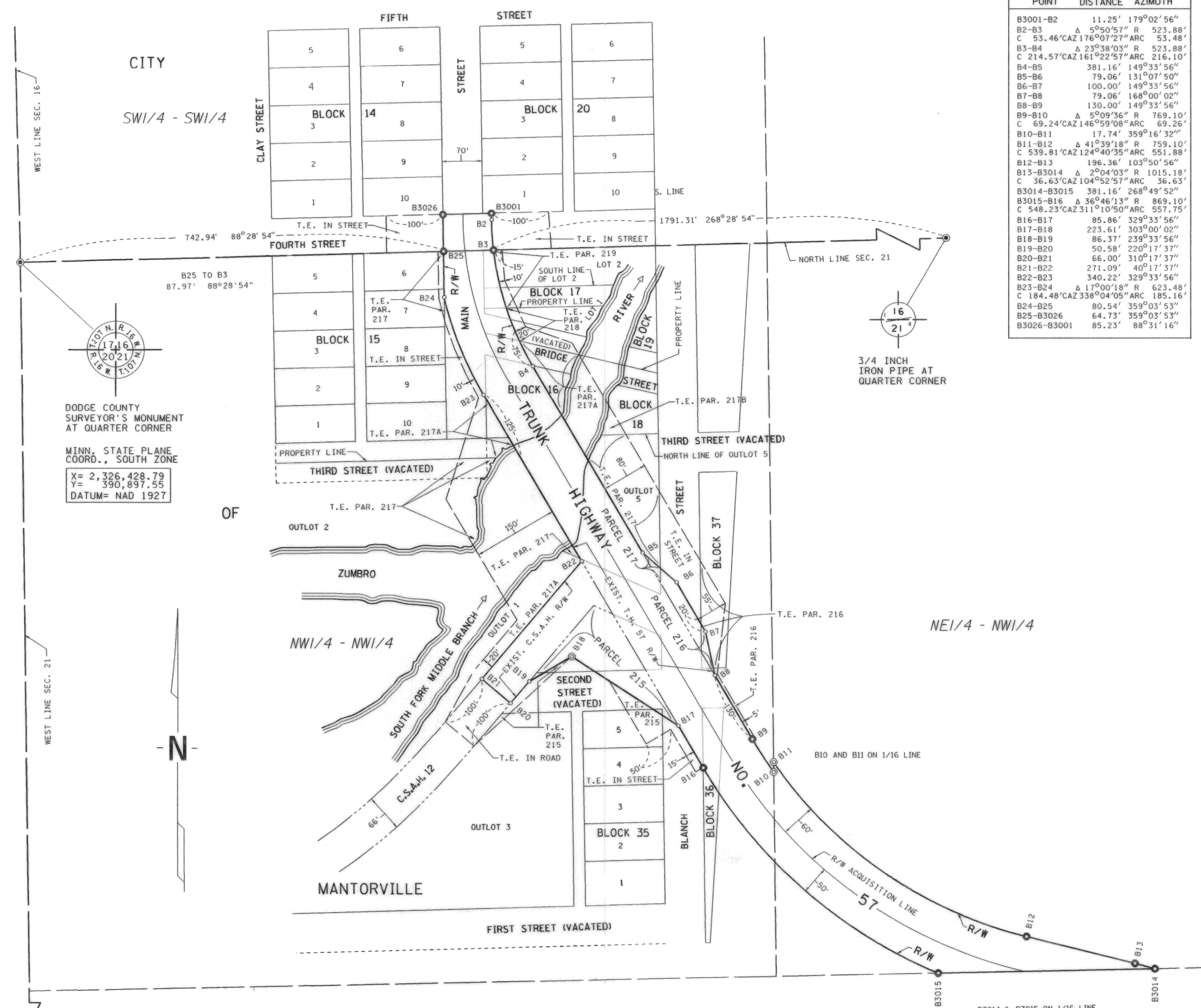
Section Line	Building Removal Easement	B. R. E.
Quarter Line	R/W Parcel Number	3
Sixteenth Line	Access Control	
Property Line	Access Opening	OPEN
R/W Boundary	Cast Iron Monument or 2"x2" D.O.T. Iron Pipe with Aluminum Cap	
Existing D.O.T. R/W Line	And Other Road R/W's	3/4" D.O.T. Iron Pin
Railroad R/W	Private Easement	Other Iron Monument
Temporary Easement	Concrete or Stone Monument	
	R/W Boundary Corner	

DISTANCES SHOWN TO FEET (66, 80 ETC.) ARE EXTRINSIC VALUES.



PLAT BOUNDARY DATA

POINT	DISTANCE	AZIMUTH
B3001-B2	11.25'	179°02'56"
B2-B3	55°50'57" R	523.88'
C	53.46' CAZ 176°07'27" ARC	53.48'
B3-B4	23°38'03" R	523.88'
C	214.57' CAZ 161°22'57" ARC	216.10'
B4-B5	381.16'	149°33'56"
B5-B6	79.06'	131°07'50"
B6-B7	100.00'	149°33'56"
B7-B8	79.06'	168°00'02"
B8-B9	130.00'	149°33'56"
B9-B10	5°09'36" R	769.10'
C	69.24' CAZ 146°59'08" ARC	69.26'
B10-B11	17.74'	359°16'32"
B11-B12	41°39'18" R	759.10'
C	539.81' CAZ 124°40'35" ARC	551.88'
B12-B13	196.36'	103°50'56"
B13-B3014	2°04'03" R	1015.18'
C	36.63' CAZ 104°52'57" ARC	36.63'
B3014-B3015	381.16'	268°49'52"
B3015-B16	36°46'13" R	869.10'
C	548.23' CAZ 311°10'50" ARC	557.75'
B16-B17	85.86'	329°33'56"
B17-B18	223.61'	303°00'02"
B18-B19	86.37'	239°33'56"
B19-B20	50.58'	220°17'37"
B20-B21	66.00'	310°17'37"
B21-B22	271.09'	40°17'37"
B22-B23	340.22'	329°33'56"
B23-B24	17°00'18" R	623.48'
C	184.48' CAZ 338°04'05" ARC	185.16'
B24-B25	80.54'	359°03'53"
B25-B3026	64.73'	359°03'53"
B3026-B3001	85.23'	88°31'16"

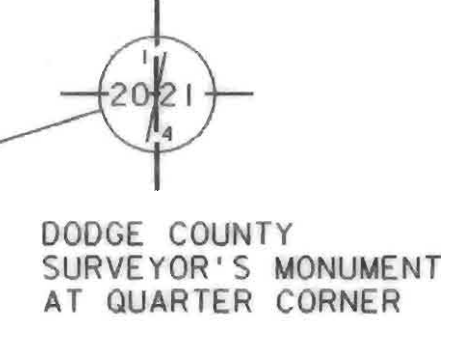


CITY
SW1/4 - SW1/4



DODGE COUNTY
SURVEYOR'S MONUMENT
AT QUARTER CORNER

MINN. STATE PLANE
COORD., SOUTH ZONE
X = 2,326,428.79
Y = 390,897.55
DATUM = NAD 1927



DODGE COUNTY
SURVEYOR'S MONUMENT
AT QUARTER CORNER

- SURVEY STANDARDS
- The plat values, azimuths, and distances are based on the project control survey system.
 - The boundary monuments shown on this plat have been field checked for location. The standard deviation for the monument position is 0.10 foot.
 - The state plane coordinates shown on one monument are based on ties to national control monuments.
 - Certificates of Location have been filed at the County Recorder's Office and/or the County Surveyor's Office for the section corner monuments shown on this plat.
 - For details of this survey contact the Surveying and Mapping Section at the Minnesota Department of Transportation, ROCHESTER, Name of District

AZIMUTH ORIENTATION AND GRID CONVERSION
Plat azimuths are oriented to Minnesota State Plane Coordinate System with 0 degrees
0 minutes 0 seconds being "GRID NORTH".
Plat distances are ground lengths and can be converted to Minnesota State Plane Grid
lengths by multiplying Plat distances by 0.9999003.

RIGHT OF WAY IN SECTION 21								
PARCEL	OWNER	LOCATION	TORREN'S CERTIFICATE NO.	NEW T.H. R/W ACRES (MORE OR LESS)	TEMPORARY EASEMENT ACRES (MORE OR LESS)	BUILDING REMOVAL EASEMENT ACRES (MORE OR LESS)	EASEMENT EXPIRES ON	PERMANENT R/W INTEREST
216	MARTIN MILLER	NW1/4NW1/4		0.02	0.13		12-1-00	FEE
215	MARGARET E. ROUHOFF	NW1/4NW1/4		0.36	0.18		12-1-00	FEE
RIGHT OF WAY IN ORIGINAL PLAT OF THE CITY OF MANTORVILLE								
217	CITY OF MANTORVILLE	LOTS 6 & 7 BLOCK 15 OUTLOTS 2& 5&VAC.ST.		397	2298		12-1-00	FEE
217A	PETER MANTOR	BLOCK 16, OUTLOT 1, & VAC. STS			19409		12-1-00	
217B	MANTORVILLE CORPORATION	BLOCK 18			1101		12-1-00	
218	WILLIAM MCMURTY	LOT 1 BLK 17 & VAC. ST.			3025		12-1-00	
219	DEGROOD BULK OIL	LOTS 1 & 2 BLOCK 17			1398		12-1-00	

NOTE: TEMPORARY EASEMENTS IN PUBLIC ROADS WILL EXPIRE ON 12-01-2000.

12

DOC. NO. 100363
OFFICE OF COUNTY RECORDER
DODGE COUNTY, MINN.
I HEREBY CERTIFY THAT THIS PLAT
HAS BEEN FILED IN THIS OFFICE
AT 2:30 O'CLOCK P.M. ON
July 11 1995 IN
BOOK 11 OF PLATS, PAGE 310
S. P. 2007 (57-57-21)
COUNTY RECORDER

PLAT NO. 20-30
S.P. 2007 (57-57-21)