

# MINNESOTA DEPARTMENT OF TRANSPORTATION RIGHT OF WAY PLAT NO. 20-31

STATE PROJECT NO. 2005156-561901  
IN THE NORTHEAST QUARTER OF SECTION 33, T. 107 N., R. 17 W.,  
IN THE NORTHWEST QUARTER OF SECTION 34, T. 107 N., R. 17 W.,  
DODGE COUNTY, MINNESOTA

THE COMMISSIONER OF TRANSPORTATION IS HEREBY DESIGNATING THE DEFINITE  
LOCATION OF TRUNK HIGHWAY NO. 56 FROM THE EAST JUNCTION TRUNK  
HIGHWAY NO. 14 TO 1.55 MILES SOUTH

As shown on this plat prepared by the State of Minnesota Department of Transportation is hereby certified as the official plat of that portion of said T.H. 14 & 56 within the designated portion of sections 33 & 34 and the Commissioner's Order therefor, pursuant to Minnesota Statutes, section 160.085, section 160.14 subd. 1, section 161.16 subd. 2, and section 161.18.

It is further ordered that it is necessary to acquire all trees, shrubs, grass and herbage within the right of way of said Trunk Highway, and to keep and have the exclusive control of the same.  
It is further ordered that the right to erect and maintain temporary snow fences under Minnesota Statutes, section 117.21 is hereby DISCLAIMED on the land which will be involved.

Commissioner's Order No.	Location	Nature of Interest
82318	PLATS 20-31 THRU 20-33	Definite location, width, access, temporary easement and building removal easement.

Certified by  
James N. Denn  
Commissioner of Transportation  
*Merritt Linge* 4-1-97  
by Merritt Linge Date  
Director, Office of Land Management

I hereby certify that this plat was prepared by me or under my direct supervision and that I am a duly Registered Land Surveyor under the Laws of the State of Minnesota; that this plat meets requirements of Minnesota Statutes, section 160.085, section 160.14 subd. 1, section 161.16 subd. 2, and section 161.18; that parcel ownership is correctly described and delineated on the plat, and that the proposed right-of-way boundary lines are correctly designated on the plat.

Certified by *Elton John* 11933 4-1-97  
Registered Land Surveyor License No. Date  
Office of Land Management

I hereby certify that this plat was surveyed by me or under my direct supervision and that I am a duly Registered Land Surveyor under the Laws of the State of Minnesota; that all measurements are correctly shown on this plat, and that all monuments have been correctly placed as shown on this plat.

Certified by *Eugene A. Marszger* 21357 4-7-97  
Registered Land Surveyor License No. Date  
M/DOT District Office

### SURVEY STANDARDS

- The plat values, azimuths, and distances are based on the project control survey system.
- The boundary monuments shown on this plat have been field checked for location. The standard deviation for the monument position is 0.10 foot.
- The county coordinates shown on one monument are based on ties to national control monuments.
- Certificates of Location have been filed at the County Recorder's Office and/or the County Surveyor's Office for the section corner monuments shown on this plat.
- For details of this survey contact the Surveying and Mapping Section at the Minnesota Department of Transportation: ROCHESTER Name of District

POINT OF INTERSECTION OF  
4 CHISEL MARKS ON  
A MANHOLE RIM  
AT QUARTER CORNER

COUNTY COORDINATES  
X = 515,118.40  
Y = 171,466.36  
DATUM = NAD 1983

CONVENTIONAL SYMBOLS

Section Line	Building Removal Easement	B. R. E.
Quarter Line	R/W Parcel Number	3
Sixteenth Line	Access Control	○
Property Line	Access Opening	○
R/W Boundary	Cast Iron Monument or 2"x2" D.O.T. Iron Pipe with Aluminum Cap	○
Existing D.O.T. R/W Line	3/4" D.O.T. Iron Pin	○
And Other Road R/W's	Other Iron Monument	○
Railroad R/W	Private Easement	○
Temporary Easement	Concrete or Stone Monument	○
	R/W Boundary Corner	○

DISTANCES SHOWN TO FEET ( 66, 80 ETC. ) ARE EXTRINSIC VALUES.

5/8 INCH IRON PIN WITH  
DODGE CO. CAP OVER  
CAST IRON MONUMENT  
AT QUARTER CORNER

5/8 INCH IRON PIN WITH  
DODGE CO. CAP OVER  
CAST IRON MONUMENT  
AT QUARTER CORNER

5/8 INCH IRON PIN WITH  
DODGE CO. CAP OVER  
CAST IRON MONUMENT  
AT QUARTER CORNER

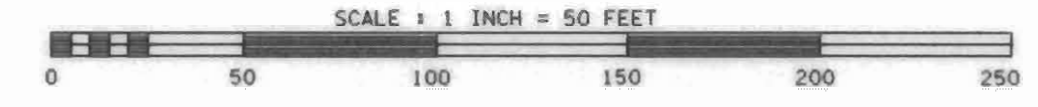
5/8 INCH IRON PIN WITH  
DODGE CO. CAP OVER  
CAST IRON MONUMENT  
AT QUARTER CORNER

5/8 INCH IRON PIN WITH  
DODGE CO. CAP OVER  
CAST IRON MONUMENT  
AT QUARTER CORNER

5/8 INCH IRON PIN WITH  
DODGE CO. CAP OVER  
CAST IRON MONUMENT  
AT QUARTER CORNER

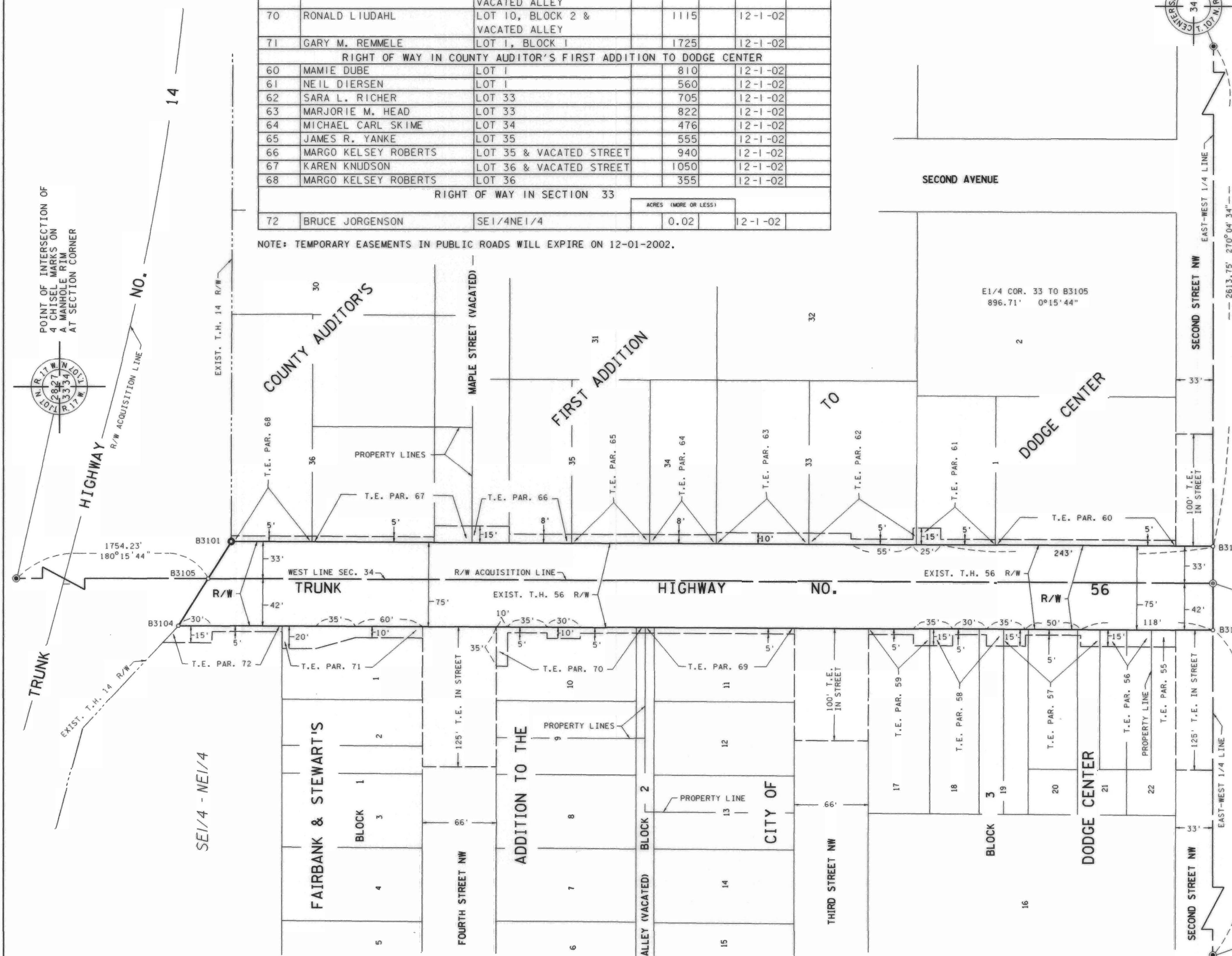
PLAT BOUNDARY DATA

POINT	DISTANCE	AZIMUTH
B3101-B3102	875.99'	180°15'44"
B3102-E1/4 33	33.00'	270°04'34"
E1/4 33-B3103	42.00'	270°02'55"
B3103-B3104	923.08'	0°15'44"
B3104-B3105	49.51'	122°14'17"
B3105-B3101	38.90'	122°14'17"

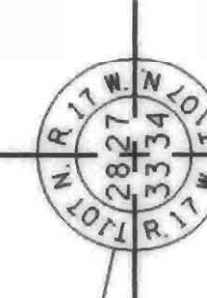


PARCEL	OWNER	LOCATION	NEW T.H. R/W		PERMANENT R/W INTEREST
			SO. FT. (MORE OR LESS)	TEMPORARY EASEMENT EXPIRES ON	
55	FAITH AMERICAN LUTHERAN CHURCH OF DODGE CENTER	LOT 22, BLOCK 3		330	12-1-02
56	FARON STAFFON	LOTS 21 & 22, BLOCK 3		690	12-1-02
57	FARON STAFFON	LOTS 19, 20 & 21 BLOCK 3		790	12-1-02
58	KENNETH E. PRESLEY	LOTS 18 & 19, BLOCK 3		690	12-1-02
59	DANIEL A. LYBECK	LOT 17, BLOCK 3		425	12-1-02
69	RAYMOND D. BURTIS	LOT 11, BLOCK 2 & VACATED ALLEY		665	12-1-02
70	RONALD LIUDAHL	LOT 10, BLOCK 2 & VACATED ALLEY		1115	12-1-02
71	GARY M. REMMELE	LOT 1, BLOCK 1		1725	12-1-02
RIGHT OF WAY IN COUNTY AUDITOR'S FIRST ADDITION TO DODGE CENTER					
60	MAMIE DUBE	LOT 1		810	12-1-02
61	NEIL DIERSEN	LOT 1		560	12-1-02
62	SARA L. RICHER	LOT 33		705	12-1-02
63	MARJORIE M. HEAD	LOT 33		822	12-1-02
64	MICHAEL CARL SKIME	LOT 34		476	12-1-02
65	JAMES R. YANKE	LOT 35		555	12-1-02
66	MARGO KELSEY ROBERTS	LOT 35 & VACATED STREET		940	12-1-02
67	KAREN KNUDSON	LOT 36 & VACATED STREET		1050	12-1-02
68	MARGO KELSEY ROBERTS	LOT 36		355	12-1-02
RIGHT OF WAY IN SECTION 33					
72	BRUCE JORGENSEN	SE1/4NE1/4		0.02	12-1-02

NOTE: TEMPORARY EASEMENTS IN PUBLIC ROADS WILL EXPIRE ON 12-01-2002.



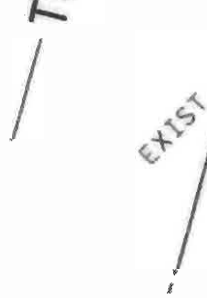
POINT OF INTERSECTION OF  
4 CHISEL MARKS ON  
A MANHOLE RIM  
AT SECTION CORNER



POINT OF INTERSECTION OF  
4 CHISEL MARKS ON  
A MANHOLE RIM  
AT QUARTER CORNER



POINT OF INTERSECTION OF  
4 CHISEL MARKS ON  
A MANHOLE RIM  
AT QUARTER CORNER



POINT OF INTERSECTION OF  
4 CHISEL MARKS ON  
A MANHOLE RIM  
AT QUARTER CORNER



C12-1

DOC. NO. 107455

OFFICE OF COUNTY RECORDER  
DODGE COUNTY, MINN.

I HEREBY CERTIFY THAT THIS PLAT  
HAS BEEN FILED IN THIS OFFICE  
AT 9:16 A.M. ON 4/1/97 IN  
BOOK 8 OF PLATS PAGE 408  
COUNTY RECORDER