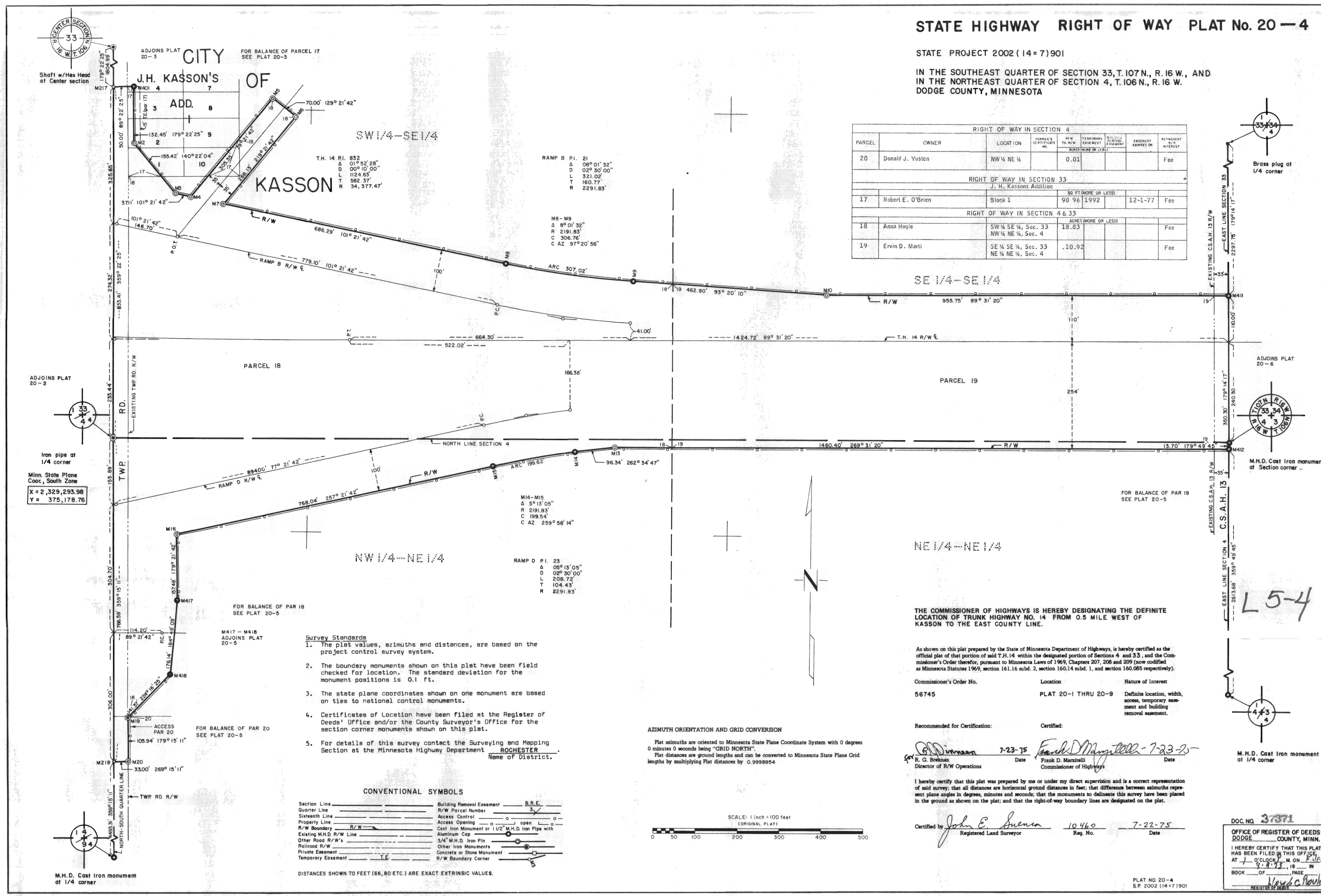


# STATE HIGHWAY RIGHT OF WAY PLAT No. 20-4

STATE PROJECT 2002 (14-7)901

IN THE SOUTHEAST QUARTER OF SECTION 33, T. 107 N., R. 16 W., AND IN THE NORTHEAST QUARTER OF SECTION 4, T. 106 N., R. 16 W. DODGE COUNTY, MINNESOTA

RIGHT OF WAY IN SECTION 4							
PARCEL	OWNER	LOCATION	FORFEIT'S CO. PARTICIPATE NO.	NEW TR. R/W	TEMPORARY EASEMENT	PERMANENT EASEMENT	PERMANENT R/W INTEREST
20	Donald J. Yuston	NW 1/4 NE 1/4		0.01			Fee
RIGHT OF WAY IN SECTION 33							
J. H. Kassons Addition							
17	Robert E. O'Brien	Block 1		90.96	1992	12-1-77	Fee
RIGHT OF WAY IN SECTION 4 & 33							
18	Anna Hogle	SW 1/4 SE 1/4, Sec. 33 NW 1/4 NE 1/4, Sec. 4		18.83			Fee
19	Ervin D. Marti	SE 1/4 SE 1/4, Sec. 33 NE 1/4 NE 1/4, Sec. 4		10.92			Fee



ADJOINS PLAT 20-2

Iron pipe at 1/4 corner

Minn. State Plane Coord., South Zone

X = 2,329,293.98  
Y = 375,178.76

- Survey Standards**
- The plat values, azimuths and distances, are based on the project control survey system.
  - The boundary monuments shown on this plat have been field checked for location. The standard deviation for the monument positions is 0.1 ft.
  - The state plane coordinates shown on one monument are based on ties to national control monuments.
  - Certificates of Location have been filed at the Register of Deeds' Office and/or the County Surveyor's Office for the section corner monuments shown on this plat.
  - For details of this survey contact the Surveying and Mapping Section at the Minnesota Highway Department **ROCHESTER** Name of District.

**CONVENTIONAL SYMBOLS**

Section Line	Building Removal Easement	B.R.E.
Quarter Line	R/W Parcel Number	3
Sixteenth Line	Access Control	open
Property Line	Access Opening	open
R/W Boundary	Cast Iron Monument or 1/2" M.H.D. Iron Pipe with Aluminum Cap	○
Existing M.H.D. R/W Line	3/4" M.H.D. Iron Pin	○
Other Road R/W's	Other Iron Monuments	○
Railroad R/W	Concrete or Stone Monument	○
Private Easement	R/W Boundary Corner	○
Temporary Easement		

DISTANCES SHOWN TO FEET (66,80 ETC.) ARE EXACT EXTRINSIC VALUES.

**AZIMUTH ORIENTATION AND GRID CONVERSION**

Plat azimuths are oriented to Minnesota State Plane Coordinate System with 0 degrees 0 minutes 0 seconds being "GRID NORTH".

Plat distances are ground lengths and can be converted to Minnesota State Plane Grid lengths by multiplying Plat distances by 0.9998954

SCALE: 1 inch = 100 feet (ORIGINAL PLAT)

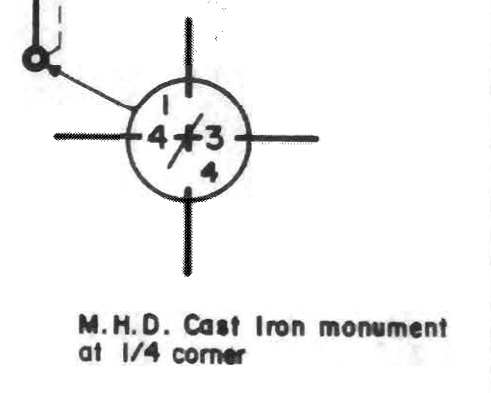
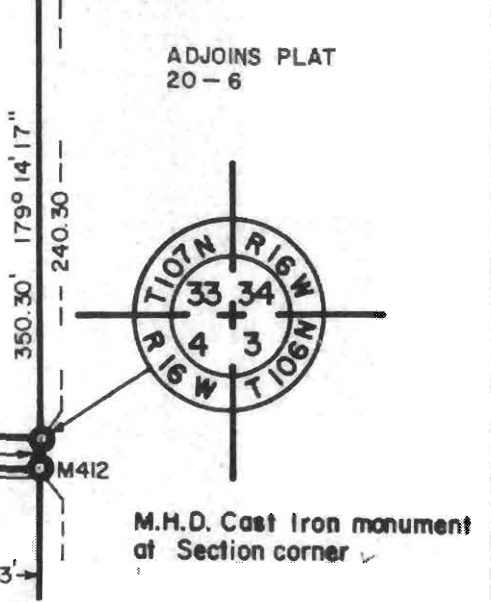
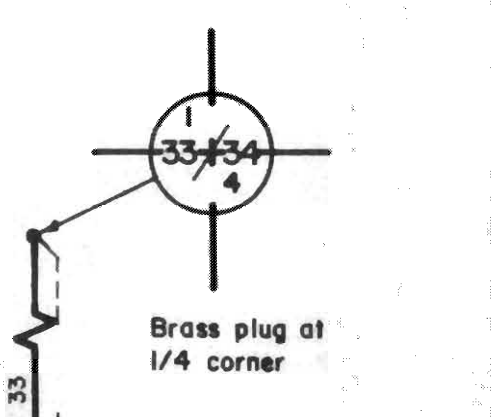
THE COMMISSIONER OF HIGHWAYS IS HEREBY DESIGNATING THE DEFINITE LOCATION OF TRUNK HIGHWAY NO. 14 FROM 0.5 MILE WEST OF KASSON TO THE EAST COUNTY LINE.

As shown on this plat prepared by the State of Minnesota Department of Highways, is hereby certified as the official plat of that portion of said T.H. 14 within the designated portion of Sections 4 and 33, and the Commissioner's Order therefor, pursuant to Minnesota Laws of 1969, Chapters 207, 208 and 209 (now codified as Minnesota Statutes 1969, section 161.16 subd. 2, section 160.14 subd. 1, and section 160.085 respectively).

Commissioner's Order No.	Location	Nature of Interest
56745	PLAT 20-1 THRU 20-9	Definite location, width, access, temporary easement and building removal easement.
Recommended for Certification:	Certified:	
R. G. Brennan Director of R/W Operations	7-23-75 Date	Frank D. Marzetti Commissioner of Highways Date

I hereby certify that this plat was prepared by me or under my direct supervision and is a correct representation of said survey; that all distances are horizontal ground distances in feet; that difference between azimuths represent plane angles in degrees, minutes and seconds; that the monuments so delineate this survey have been placed in the ground as shown on the plat; and that the right-of-way boundary lines are designated on the plat.

Certified by John E. Sullivan Registered Land Surveyor 10460 Reg. No. 7-22-75 Date



DOC NO. 37371

OFFICE OF REGISTER OF DEEDS  
DODGE COUNTY, MINN.

I HEREBY CERTIFY THAT THIS PLAT HAS BEEN FILED IN THIS OFFICE AT 1 O'CLOCK P.M. ON 7/16 AT 9:12, 19 IN BOOK OF PAGE

PLAT NO. 20-4  
S.P. 2002 (14-7)901