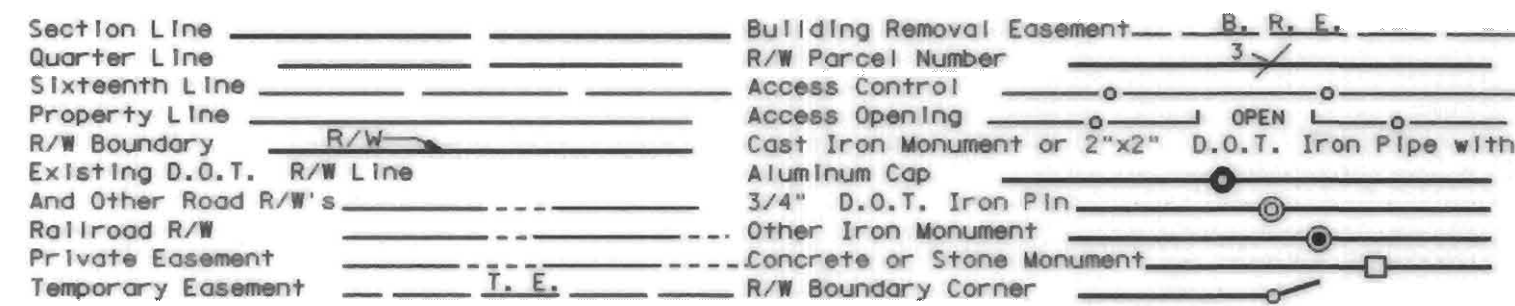


CONVENTIONAL SYMBOLS



DISTANCES SHOWN TO FEET (66, 80 ETC.) ARE EXACT VALUES.



AZIMUTH ORIENTATION AND GRID CONVERSION
Plat azimuths are oriented to the County Coordinate System with 0 degrees 0 minutes 0 seconds being "GRID NORTH". Plat distances are ground lengths.

PLAT BOUNDARY DATA			
POINT	FROM TO	DISTANCE	AZIMUTH
B3701	B1	2,648.86	90° 16' 26"
B1	B2	926.54	90° 16' 26"
B2	B3	333.61	90° 16' 26"
B3	B4	619.14	88° 42' 54"
ARC		619.22	
DELTA			3° 07' 05" LT
RADIUS		11,378.26	
B4	B5	291.73	87° 09' 21"
B5	B6	423.23	87° 09' 21"
B6	B7	1,262.60	0° 19' 15"
B7	B8	38.39	135° 37' 15"
B8	B4209	29.23	96° 29' 30"
B4209	NE 1	2,530.63	180° 15' 44"
NE 1	B10	58.65	270° 06' 00"
B10	B11	913.99	0° 19' 15"
B11	B12	137.47	313° 44' 28"
B12	B13	307.54	267° 09' 41"
B13	B14	1,259.77	268° 43' 26"
ARC		1,259.93	
DELTA			3° 07' 29" RT
RADIUS		23,102.30	
B14	B15	925.50	270° 17' 10"
B15	B3702	2,648.09	270° 17' 10"
B3702	B3701	284.42	359° 55' 18"

THE COMMISSIONER OF TRANSPORTATION IS HEREBY DESIGNATING THE DEFINITE LOCATION OF TRUNK HIGHWAY NO. 14 FROM ONE MILE EAST OF THE JUNCTION OF COUNTY ROAD I TO 0.5 MILE WEST OF KASSON

as shown on this plat prepared by the State of Minnesota Department of Transportation is hereby certified as the official plat of that portion of said T.H. 14 within the designated portion of Section 36 and the Commissioner's Order therefor pursuant to Minnesota Statutes, section 160.085, section 160.14 subd. 1, section 161.16 subd. 2, and section 161.18.

It is further ordered that it is necessary to acquire all trees, shrubs, grass and herbage within the right of way of said Trunk Highway, and to keep and have the exclusive control of the same.

It is further ordered that the right to erect and maintain temporary snow fences under Minnesota Statutes, Section 117.21 is hereby disclaimed on the land which will be involved.

Commissioner's Order No.	Location	Nature of Interest
83405	PLAT 20-42	Definite location, width, access, temporary easement and building removal easement.

Certified by James N. Denn, Commissioner of Transportation, dated 12-14-98, by Merritt Linzle, Director, Office of Land Management.

I hereby certify that this plat was prepared by me or under my direct supervision and that I am a duly Registered Land Surveyor under the Laws of the State of Minnesota; that this plat meets requirements of Minnesota Statutes, section 160.085, section 160.14 subd. 1, section 161.16 subd. 2, and section 161.18; that parcel ownerships are correctly described and delineated on the plat; and that the proposed right-of-way boundary lines are correctly designated on the plat.

Certified by Ronald J. Olson, Registered Land Surveyor, License No. 11009, dated 12/14/98, Office of Land Management.

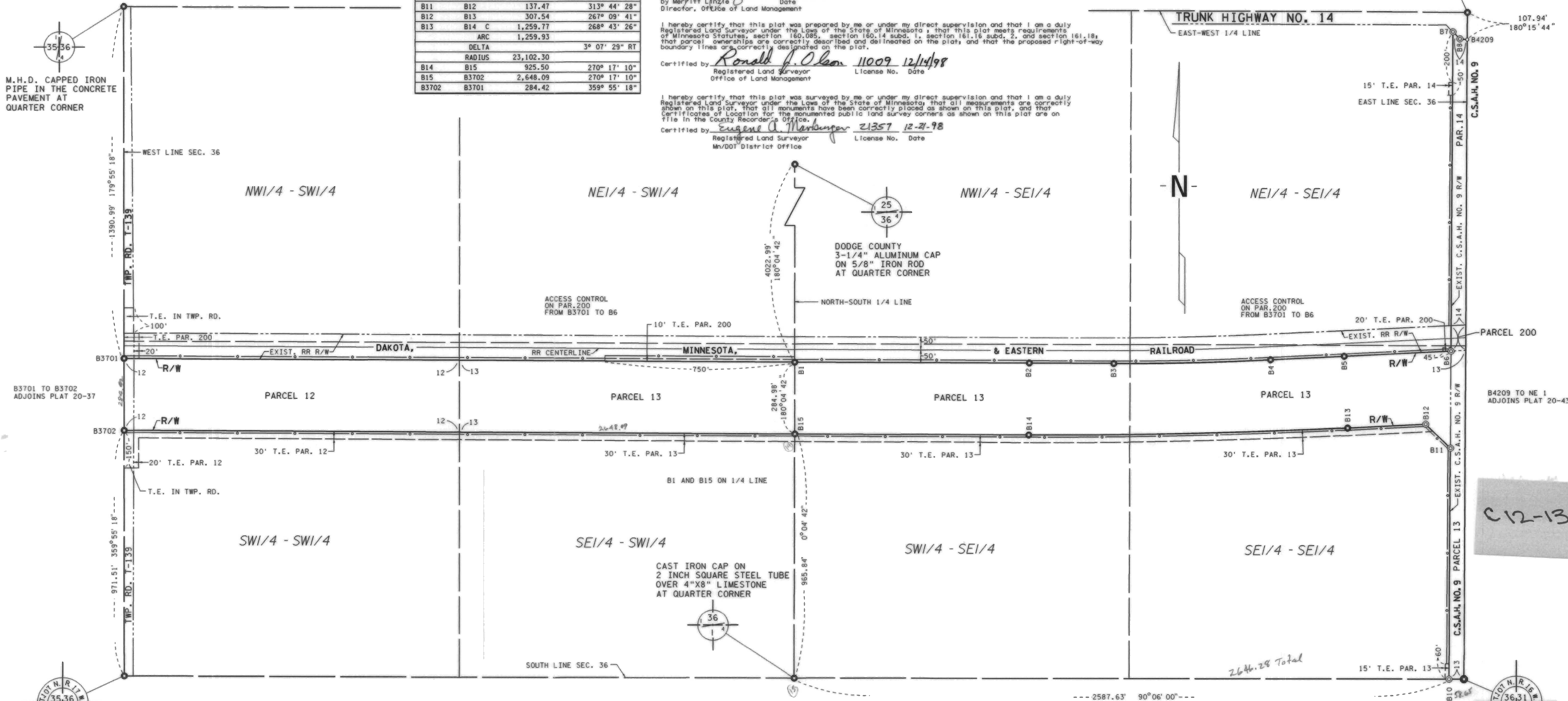
I hereby certify that this plat was surveyed by me or under my direct supervision and that I am a duly Registered Land Surveyor under the Laws of the State of Minnesota; that all measurements are correctly shown on this plat; that all monuments have been correctly placed as shown on this plat; and that Certificates of Location for the monumented public land survey corners as shown on this plat are on file in the County Recorder's Office.

Certified by Eugene J. Merburger, Registered Land Surveyor, License No. 21357, dated 12-21-98, Mn/DOT District Office.

MINNESOTA DEPARTMENT OF TRANSPORTATION
RIGHT OF WAY PLAT NO. 20-42

CONTROL SECTION NO. 2002 (14-7)902
IN THE SOUTH HALF OF SECTION 36, T. 107 N., R. 17 W.,
DODGE COUNTY, MINNESOTA

CAPPED IRON PIPE AT QUARTER CORNER



M.H.D. CAPPED IRON PIPE IN THE CONCRETE PAVEMENT AT QUARTER CORNER

B3701 TO B3702 ADJOINS PLAT 20-37

B4209 TO NE 1 ADJOINS PLAT 20-43

CAST IRON MONUMENT OVER IRON PIN AT SECTION CORNER

DODGE COUNTY COORDINATES
X= 525,694.35
Y= 168,816.50
DATUM= NAD 1983

RIGHT OF WAY IN SECTION 36								
PARCEL	OWNER	LOCATION	TORRENS CERTIFICATE NO.	NEW T.H. R/W ACRES (MORE OR LESS)	BUILDING REMOVAL EASEMENT	TEMPORARY EASEMENT	TEMPORARY EASEMENT EXPIRES ON	PERMANENT R/W INTEREST
200	DAKOTA, MINNESOTA & EASTERN RAILROAD	S1/2		0.13		0.33	12-01-04	EASE.
12	LLOYD R. HENSLIN, JR.	SW1/4SW1/4		8.65		0.94	12-01-04	FEE
13	GARY KRESS	SE1/4SW1/4		27.40		2.66	12-01-04	FEE
14	DONALD P. STROEBL	NE1/4SE1/4		1.48		0.02	12-01-04	FEE

NOTE: TEMPORARY EASEMENTS IN PUBLIC ROADS WILL EXPIRE ON 12-01-2004

SURVEY STANDARDS

- The plat values, azimuths, and distances are based on the County coordinate system.
- The boundary monuments shown on this plat have been field checked for location. The standard deviation for the monument position is 0.10 foot.
- The county coordinates shown on one monument are based on ties to national control monuments.
- For details of this survey contact the Surveying Section at the Minnesota Department of Transportation, ROCHESTER, Name of District

C12-13

CAST IRON MONUMENT OVER LIMESTONE AT SECTION CORNER

DOC. NO. 116212
OFFICE OF COUNTY RECORDER
DODGE COUNTY, MINN.
I HEREBY CERTIFY THAT THIS PLAT HAS BEEN FILED IN THIS OFFICE AT 11:30 O'CLOCK AM ON December 22, 1998 IN BOOK 8 OF RIGHTS, PAGE 518
Sgt. J. LINDEN
COUNTY RECORDER

PLAT NO. 20-42
C.S. 2002 (14-7)902