

MINNESOTA DEPARTMENT OF TRANSPORTATION  
RIGHT OF WAY PLAT NO. 20-43

CONTROL SECTION NO. 2002 (14=7)902  
IN THE SOUTH HALF OF SECTION 31, T. 107 N., R. 16 W.,  
IN THE SOUTHWEST QUARTER OF SECTION 32, T. 107 N., R. 16 W.,  
DODGE COUNTY, MINNESOTA

SURVEY STANDARDS

- The plat values, azimuths, and distances are based on the County coordinate system.
- The boundary monuments shown on this plat have been field checked for location. The standard deviation for the monument position is 0.10 foot.
- The county coordinates shown on one monument are based on ties to national control monuments.
- For details of this survey contact the Surveying Section at the Minnesota Department of Transportation, ROCHESTER, Name of District

AZIMUTH ORIENTATION AND GRID CONVERSION

Plat azimuths are oriented to the County Coordinate System with 0 degrees 0 minutes 0 seconds being "GRID NORTH". Plat distances are ground lengths.

PLAT BOUNDARY DATA			
FROM	TO	DISTANCE	AZIMUTH
B4209	B1	37.15	96°29'30"
B1	B2	40.56	42°03'09"
B2	B3	1251.81	180°19'15"
B3	B4	2670.32	87°09'21"
B4	M126	2634.40	87°09'21"
M126	B4305	285.22	180°18'41"
B4305	B6	2631.44	267°09'41"
B6	B7	830.14	266°03'26"
B7	B8	487.54	269°02'32"
B8	B9	1256.04	267°09'41"
B9	B10	145.27	223°44'28"
B10	B11	920.90	180°19'15"
B11	B72	61.35	270°48'03"
B72	B4209	2530.63	0°15'44"

THE COMMISSIONER OF TRANSPORTATION IS HEREBY DESIGNATING THE DEFINITE LOCATION OF TRUNK HIGHWAY NO. 14 FROM ONE MILE EAST OF THE JUNCTION OF COUNTY ROAD I TO 0.5 MILE WEST OF KASSON

as shown on this plat prepared by the State of Minnesota Department of Transportation is hereby certified as the official plat of that portion of said T.H. 14 within the designated portion of Sections 31 & 32 and the Commissioner's Order therefor pursuant to Minnesota Statutes, section 160.085, section 160.14 subd. 1, section 161.16 subd. 2, and section 161.18.

It is further ordered that it is necessary to acquire all trees, shrubs, grass and herbage within the right of way of said Trunk Highway, and to keep and have the exclusive control of the same.

It is further ordered that the right to erect and maintain temporary snow fences under Minnesota Statutes, Section 117.21 is hereby disclaimed on the land which will be involved.

Commissioner's Order No.	Location	Nature of Interest
83406	PLAT 20-43	Definite location, width, access, temporary easement and building removal easement.

Certified by  
James N. Denn  
Commissioner of Transportation  
by *Merritt Linde* 12-11-98  
Merritt Linde  
Date  
Director, Office of Land Management

I hereby certify that this plat was prepared by me or under my direct supervision and that I am a duly Registered Land Surveyor under the Laws of the State of Minnesota, that all measurements are correctly shown on this plat, that all monuments have been correctly placed as shown on this plat, and that Certificates of Location for the monumented public land survey corners as shown on this plat are on file in the County Recorder's Office.

Certified by *Ronald A. Olson* 11009 12-14-98  
Ronald A. Olson  
License No. Date  
Registered Land Surveyor  
Office of Land Management

I hereby certify that this plat was surveyed by me or under my direct supervision and that I am a duly Registered Land Surveyor under the Laws of the State of Minnesota, that all measurements are correctly shown on this plat, that all monuments have been correctly placed as shown on this plat, and that Certificates of Location for the monumented public land survey corners as shown on this plat are on file in the County Recorder's Office.

Certified by *Ernest A. Maringer* 21357 12-21-98  
Ernest A. Maringer  
License No. Date  
Registered Land Surveyor  
Mn/DOT District Office

CONVENTIONAL SYMBOLS

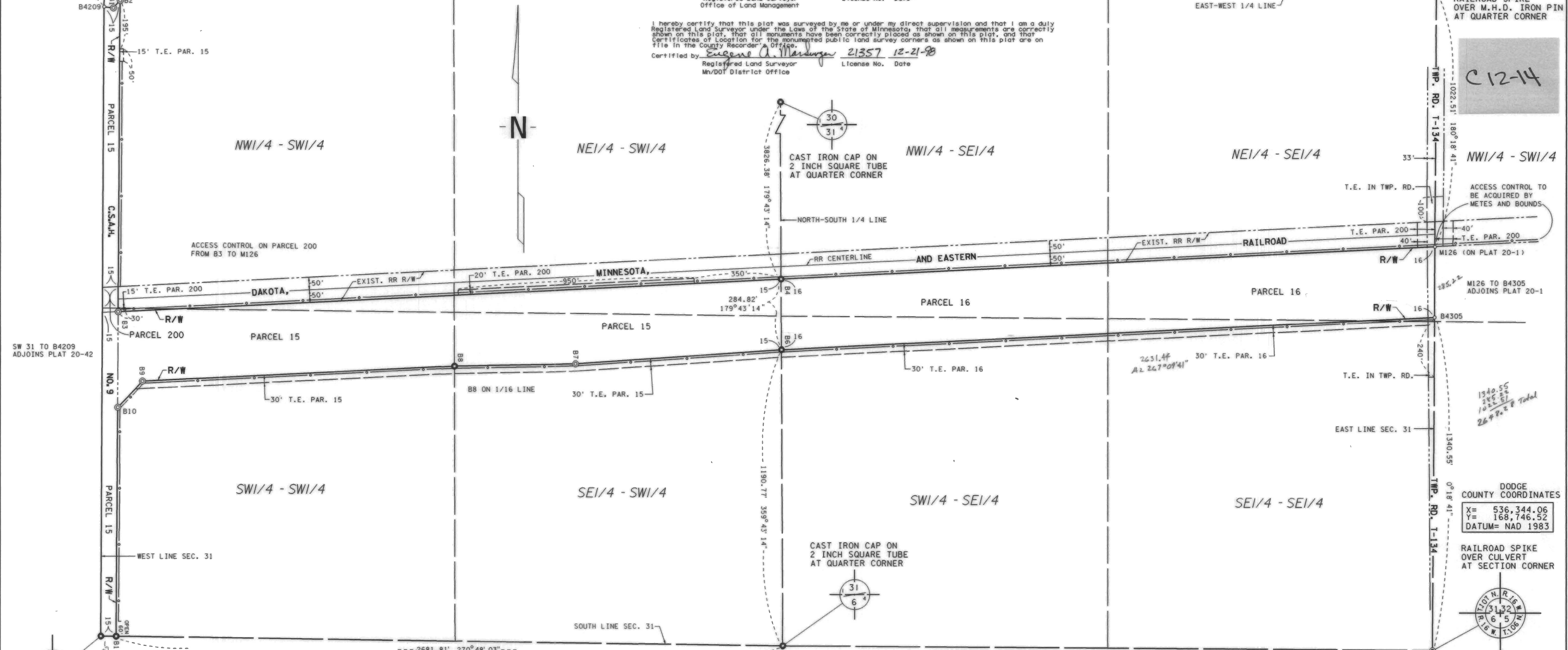
Section Line	Building Removal Easement	B. R. E.
Quarter Line	R/W Parcel Number	
Sixteenth Line	Access Control	
Property Line	Access Opening	OPEN
R/W Boundary	Cast Iron Monument or 2"x2" D.O.T. Iron Pipe with Aluminum Cap	
Existing D.O.T. R/W Line	3/4" D.O.T. Iron Pin	
And Other Road R/W's	Railroad R/W	
Railroad R/W	Private Easement	Concrete or Stone Monument
Temporary Easement	R/W Boundary Corner	



CAPPED IRON PIPE AT QUARTER CORNER



107.94'  
180°15'44"

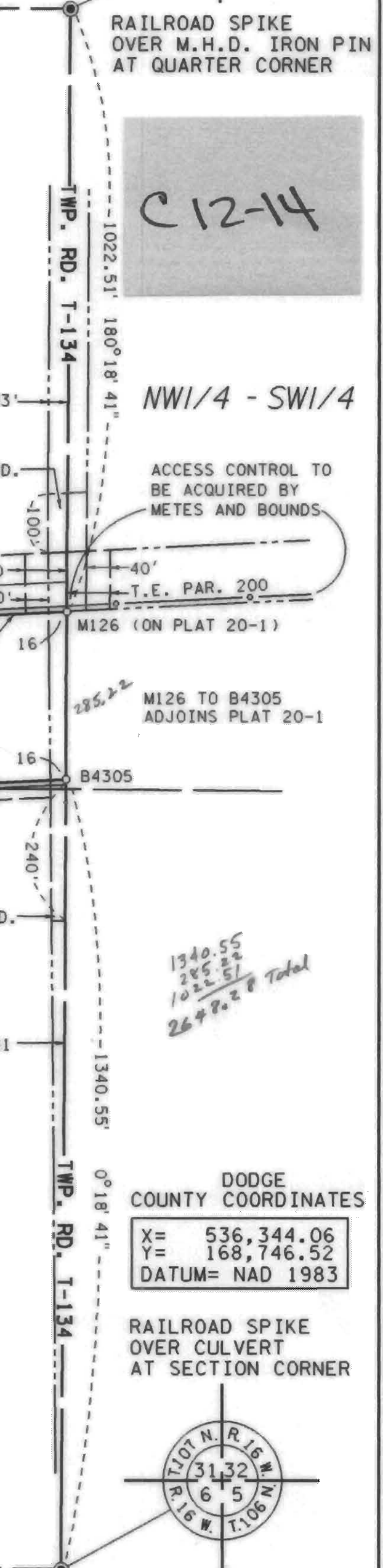


SW 31 to B4209  
ADJOINS PLAT 20-42

CAST IRON MONUMENT OVER LIMESTONE AT SECTION CORNER

RIGHT OF WAY IN SECTION 31							
PARCEL	OWNER	LOCATION	TORRENS CERTIFICATE NO.	NEW T.N. R/W ACRES (MORE OR LESS)	BUILDING REMOVAL EASEMENT	TEMPORARY EASEMENT EXPIRES ON	PERMANENT R/W INTEREST
15	DEANNA SNOW	SW1/4		21.30	1.80	12-01-04	FEE
16	EDGAR FAMILY FARMS	SE1/4		17.21	1.79	12-01-04	FEE
RIGHT OF WAY IN SECTIONS 31 & 32							
200	DAKOTA, MINNESOTA & EASTERN RAILROAD	S1/2 SEC. 31 NW1/4 SW1/4 SEC. 32		0.14	0.78	12-01-04	EASE.

NOTE: TEMPORARY EASEMENTS IN PUBLIC ROADS WILL EXPIRE ON 12-01-2004



DODGE COUNTY COORDINATES

X=	536,344.06
Y=	168,746.52
DATUM=	NAD 1983

RAILROAD SPIKE OVER CULVERT AT SECTION CORNER

DOC. NO. 116212  
OFFICE OF COUNTY RECORDER  
DODGE COUNTY, MINN.  
I HEREBY CERTIFY THAT THIS PLAT HAS BEEN FILED IN THIS OFFICE AT 7:50 O'CLOCK AM ON December 20, 1998 IN BOOK 8 of Plats, PAGE 51A  
COUNTY RECORDER