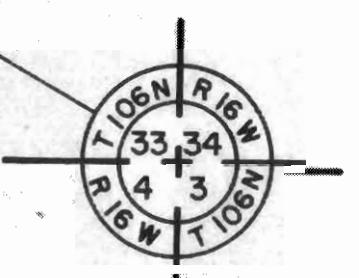
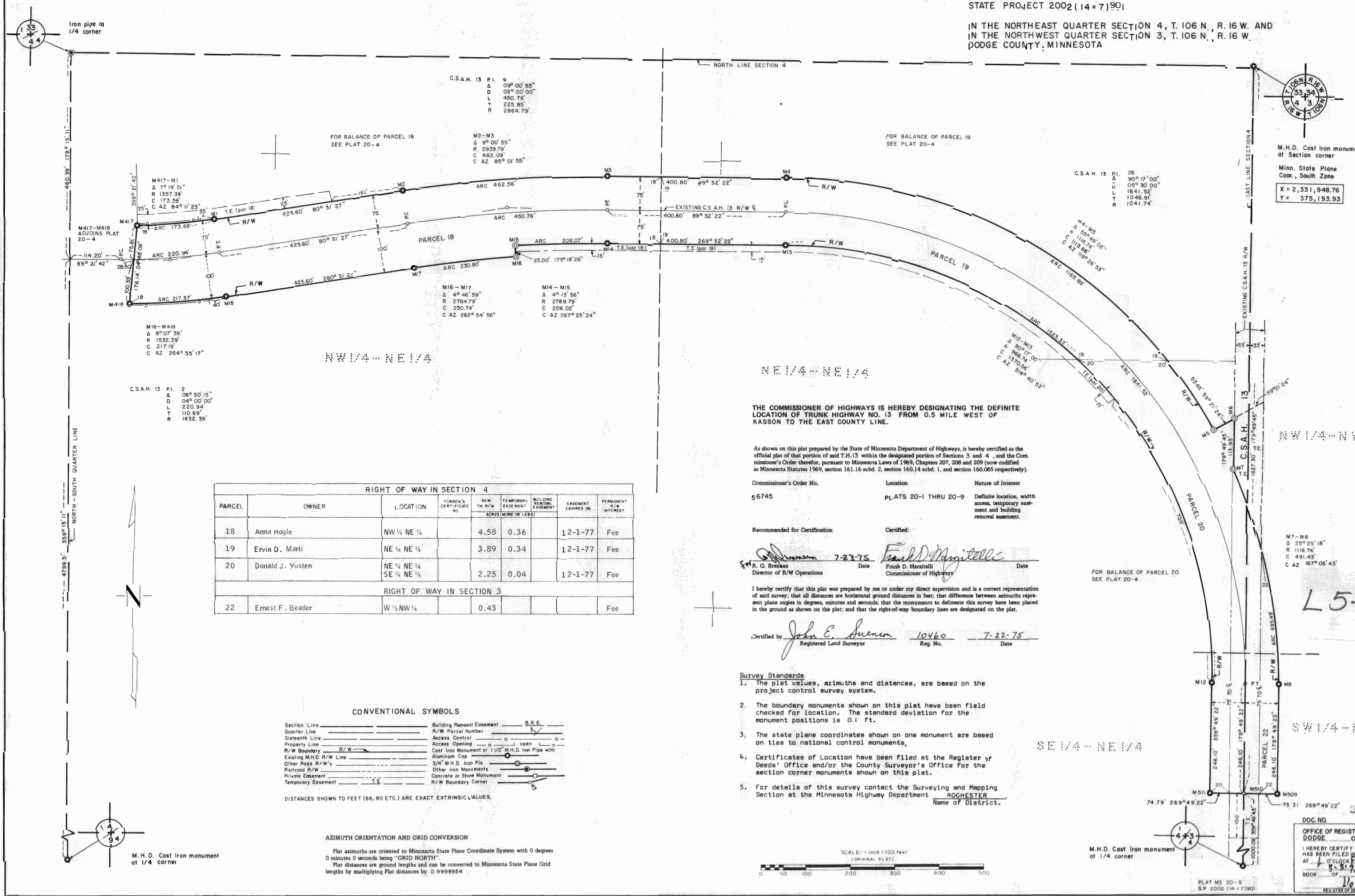


STATE HIGHWAY RIGHT OF WAY PLAT No. 20-5

STATE PROJECT 2002 (14-7)901

IN THE NORTHEAST QUARTER SECTION 4, T. 106 N., R. 16 W. AND
IN THE NORTHWEST QUARTER SECTION 3, T. 106 N., R. 16 W.
DODGE COUNTY, MINNESOTA



M.H.D. Cast Iron monument at Section corner
Minn. State Plane Coord., South Zone
X = 2,331,948.76
Y = 375,193.93

C.S.A.H. 13 Pl. 2
Δ 08° 50' 15"
D 04° 00' 00"
L 220.94'
T 110.69'
R 1432.39'

C.S.A.H. 13 Pl. 9
Δ 09° 00' 55"
D 02° 00' 00"
L 450.76'
T 225.85'
R 2864.79'

M2-M3
Δ 9° 00' 55"
R 2939.79'
C 462.09'
C AZ 88° 01' 55"

C.S.A.H. 13 Pl. 26
Δ 50° 17' 00"
D 05° 30' 00"
L 1641.52'
T 1046.91'
R 1041.74'

M417-M1
Δ 79° 19' 51"
R 1357.39'
C 173.56'
C AZ 84° 11' 23"

M417-M418
Δ 89° 21' 42"
R 176.14'
C 100.33'
C AZ 176° 14' 09"

M18-M418
Δ 8° 07' 39"
R 1532.39'
C 217.19'
C AZ 264° 35' 17"

M16-M17
Δ 4° 46' 59"
R 2764.73'
C 230.74'
C AZ 282° 54' 56"

M14-M15
Δ 4° 13' 56"
R 2789.79'
C 206.02'
C AZ 267° 25' 24"

M4-M5
Δ 59° 49' 02"
R 1116.66'
C 115.66'
C AZ 119° 26' 53"

M7-M8
Δ 25° 25' 18"
R 1116.74'
C 491.43'
C AZ 167° 06' 43"

RIGHT OF WAY IN SECTION 4							
PARCEL	OWNER	LOCATION	TORREN'S CERTIFICATE NO.	NEW R/W TH. R/W	TEMPORARY EASEMENT ACRES (MORE OR LESS)	BUILDING REMOVAL EASEMENT EXPIRES ON	PERMANENT R/W INTEREST
18	Anna Hogle	NW 1/4 NE 1/4		4.58	0.36	12-1-77	Fee
19	Ervin D. Marti	NE 1/4 NE 1/4		3.89	0.34	12-1-77	Fee
20	Donald J. Yusten	NE 1/4 NE 1/4 SE 1/4 NE 1/4		2.25	0.04	12-1-77	Fee

RIGHT OF WAY IN SECTION 3			
PARCEL	OWNER	LOCATION	ACRES
22	Ernest F. Beader	W 1/2 NW 1/4	0.43

THE COMMISSIONER OF HIGHWAYS IS HEREBY DESIGNATING THE DEFINITE LOCATION OF TRUNK HIGHWAY NO. 13 FROM 0.5 MILE WEST OF KASSON TO THE EAST COUNTY LINE.

As shown on this plat prepared by the State of Minnesota Department of Highways, is hereby certified as the official plat of that portion of said T.H.13 within the designated portion of Sections 3 and 4, and the Commissioner's Order therefor, pursuant to Minnesota Laws of 1969, Chapters 207, 208 and 209 (now codified as Minnesota Statutes 1969, section 161.16 subd. 2, section 160.14 subd. 1, and section 160.085 respectively).

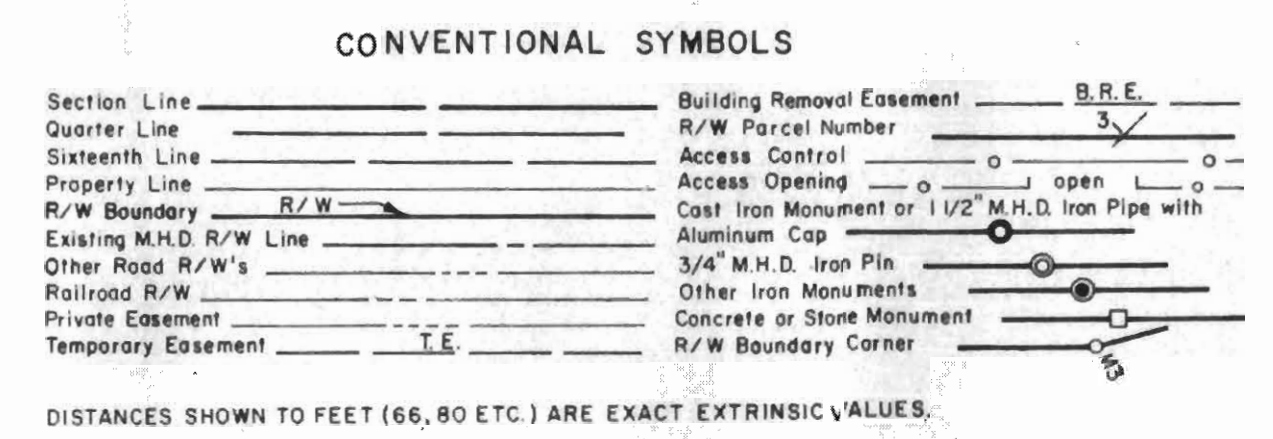
Commissioner's Order No. 56745 Location: PLATS 20-1 THRU 20-9 Nature of Interest: Definite location, width access, temporary easement and building removal easement.

Recommended for Certification: R. G. Brennan, Director of R/W Operations, Date: 7-23-75
Certified: Frank D. Marzittelli, Commissioner of Highways, Date: 7-22-75

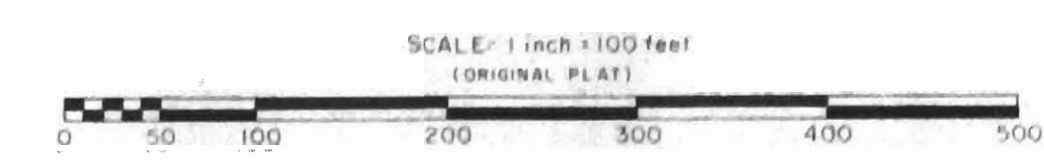
I hereby certify that this plat was prepared by me or under my direct supervision and is a correct representation of said survey; that all distances are horizontal ground distances in feet; that difference between azimuths represent plane angles in degrees, minutes and seconds; that the monuments to delineate this survey have been placed in the ground as shown on the plat; and that the right-of-way boundary lines are designated on the plat.

Certified by: John E. Sullivan, Registered Land Surveyor, 10460, 7-22-75, Reg. No., Date

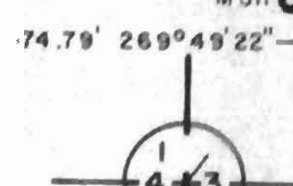
- Survey Standards
- The plat values, azimuths and distances, are based on the project control survey system.
 - The boundary monuments shown on this plat have been field checked for location. The standard deviation for the monument positions is 0.1 ft.
 - The state plane coordinates shown on one monument are based on ties to national control monuments.
 - Certificates of Location have been filed at the Register of Deeds' Office and/or the County Surveyor's Office for the section corner monuments shown on this plat.
 - For details of this survey contact the Surveying and Mapping Section at the Minnesota Highway Department, ROCHESTER, Name of District.



AZIMUTH ORIENTATION AND GRID CONVERSION
Plat azimuths are oriented to Minnesota State Plane Coordinate System with 0 degrees 0 minutes 0 seconds being "GRID NORTH".
Plat distances are ground lengths and can be converted to Minnesota State Plane Grid lengths by multiplying Plat distances by 0.9998954



SE 1/4 - NE 1/4



M.H.D. Cast Iron monument at 1/4 corner

L5-5

DOC. NO. 37872
OFFICE OF REGISTER OF DEEDS
DODGE COUNTY, MINN.
I HEREBY CERTIFY THAT THIS PLAT HAS BEEN FILED IN THIS OFFICE AT 1 O'CLOCK P.M. ON JUL 26, 1975 IN BOOK OF PAGE REGISTERED BY

PLAT NO. 20-5
S.P. 2002 (14-7)901