

THE COMMISSIONER OF TRANSPORTATION IS HEREBY DESIGNATING THE DEFINITE LOCATION OF TRUNK HIGHWAY NO. 56 FROM EXISTING TRUNK HIGHWAY NO. 14 TO THE SOUTHERLY RIGHT OF WAY LINE OF THE DAKOTA, MINNESOTA & EASTERN RAILROAD IN WASTOJA TOWNSHIP,

as shown on this plat prepared by the State of Minnesota Department of Transportation is hereby certified as the official plat of that portion of said T.H. 56 within the designated portion of Sections 30 & 31 and the Commissioner's Order thereon pursuant to Minnesota Statutes, section 160.085, Section 160.14 subd. 1, Section 161.16 subd. 2, and Section 161.18.

It is further ordered that it is necessary to acquire all trees, shrubs, grass and herbage within the right of way of said Trunk Highway, and to keep and have the exclusive control of the same.

Commissioner's Order No. 97790 Location PLAT 20-54 Nature of Interest Definite location, width, access, permanent driveway easement, and temporary easement.

Certified by Margaret Anderson Kallher, Commissioner of Transportation, dated 10 Jan. 19. Peter W. Jenkins, Assistant Director, Office of Land Management.

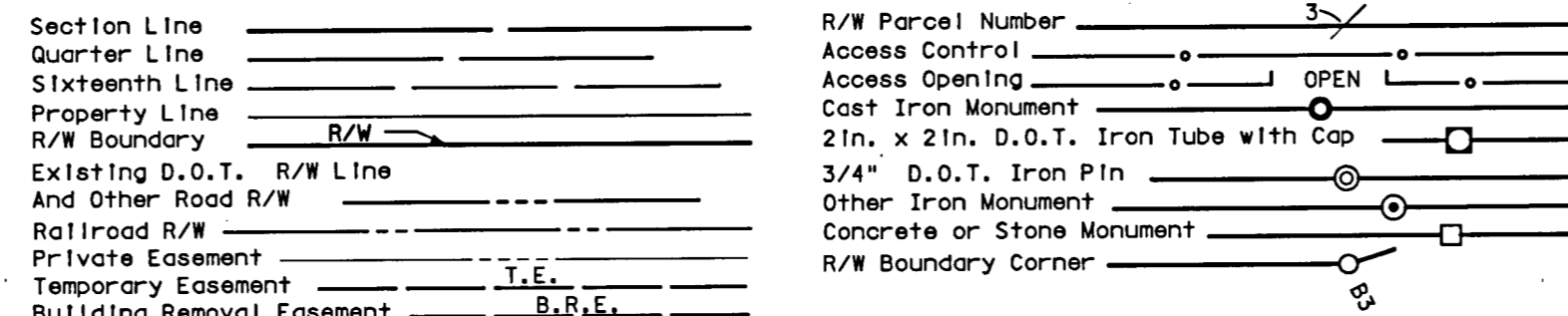
I hereby certify that this plat was prepared by me or under my direct supervision and that I am a duly Licensed Land Surveyor under the Laws of the State of Minnesota, that this plat meets the requirements of Minnesota Statutes, Section 160.085, Section 160.14 subd. 1, Section 161.16 subd. 2, and Section 161.18; that parcel ownerships are correctly described and delineated on the plat; and that the proposed right of way boundary lines are correctly designated on the plat.

Certified by Joshua J. DeLeeuw, License No. 53071, Date 11/10/2019, MnDOT District Office.

I hereby certify that this plat was surveyed by me or under my direct supervision and that I am a duly Licensed Land Surveyor under the Laws of the State of Minnesota, that all measurements are correctly shown on this plat; that all monuments have been correctly placed as shown on this plat; that Certificates of Location for the monumented Public Land Survey corners as shown on this plat are on file in the County Recorder's Office (if required under Minnesota Statutes, Section 160.15) and/or the County Surveyor's Office.

Certified by Jordan B. Kurth, License No. 48717, Date Jan. 11, 2019, MnDOT District 6 Office.

CONVENTIONAL SYMBOLS



DISTANCES SHOWN TO FEET (66, 80 ETC.) ARE EXACT VALUES.

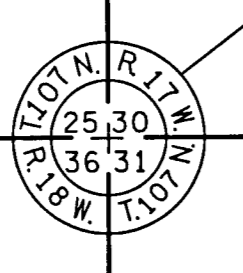
MINNESOTA DEPARTMENT OF TRANSPORTATION RIGHT OF WAY PLAT NO. 20-54

CONTROL SECTION NO. 2006 (56=56-21-1) CONTROL SECTION NO. 2001 (14=7) 903 IN THE SOUTHEAST QUARTER OF SECTION 30, T.107N., R.17W., IN THE NORTHWEST QUARTER OF THE NORTHEAST QUARTER OF SECTION 31, T.107N., R.17W., IN GOVERNMENT LOTS 11 AND 12 OF SECTION 30, T.107N., R.17W., IN GOVERNMENT LOTS 1 AND 2 OF SECTION 31, T.107N., R.17W., IN DODGE COUNTY, MINNESOTA

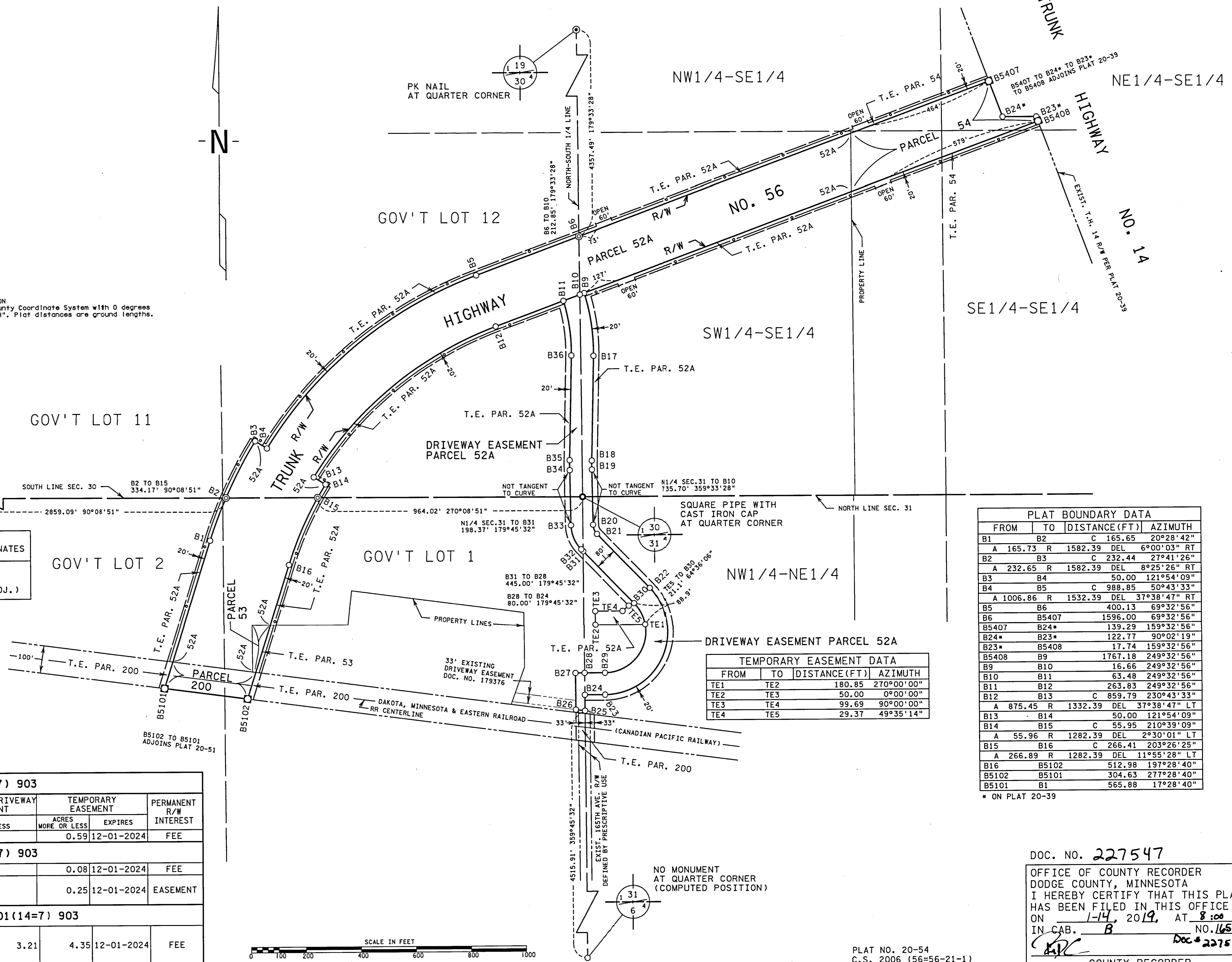
FROM	TO	DISTANCE (FT)	AZIMUTH
B5	B17	C 231.28	172°00'01"
A	232.29	R 720.00	DEL 18°29'06" RT
B17	B18	C 361.01	181°14'34"
B18	B19	C 32.69	179°46'46"
A	32.69	R 640.00	DEL 2°55'36" LT
B19	B20	C 200.91	178°58'04"
B20	B21	C 36.53	157°28'21"
A	37.40	R 50.00	DEL 42°51'22" LT
B21	B22	C 275.00	136°02'40"
B22	B23	C 423.36	203°01'20"
A	537.73	R 230.00	DEL 133°57'20" RT
B23	B24	C 73.86	270°00'00"
B24	B25	C 57.75	179°45'32"
B25	B26	C 33.31	277°33'25"
B26	B27	C 133.37	359°45'32"
B27	B28	C 33.00	90°00'00"
B28	B29	C 74.20	90°00'00"
B29	B30	C 276.11	23°01'20"
A	350.69	R 150.00	DEL 133°57'20" LT
B30	B31	C 265.16	316°02'40"
B31	B32	C 9.83	316°02'40"
B32	B33	C 95.02	337°28'52"
A	97.28	R 130.00	DEL 42°52'24" RT
B33	B34	C 200.52	358°58'04"
B34	B35	C 36.30	359°47'53"
A	36.31	R 720.00	DEL 2°53'21" RT
B35	B36	C 381.01	1°14'34"
B36	B11	C 201.16	352°12'04"
A	201.99	R 640.00	DEL 18°05'00" LT

AZIMUTH ORIENTATION AND GRID CONVERSION  
Plat azimuths are oriented to the County Coordinate System with 0 degrees 0 minutes 0 seconds being "GRID NORTH". Plat distances are ground lengths.

5/8" PIN WITH A 3-1/4" ALUMINUM DODGE COUNTY CAP AT SECTION CORNER



DODGE COUNTY COORDINATES  
X=497764.975  
Y=174142.896  
NAD 83(1996 ADJ.)



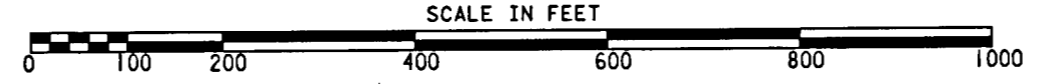
FROM	TO	DISTANCE (FT)	AZIMUTH
B1	B2	C 165.65	20°28'42"
A	165.73	R 1582.39	DEL 6°00'03" RT
B2	B3	C 232.44	27°41'26"
A	232.65	R 1582.39	DEL 8°25'26" RT
B3	B4	C 50.00	121°54'09"
B4	B5	C 988.85	50°43'33"
A	1006.86	R 1532.39	DEL 37°38'47" RT
B5	B6	C 400.13	69°32'56"
B6	B5407	C 1596.00	69°32'56"
B5407	B24*	C 139.29	159°32'56"
B24*	B23*	C 122.77	90°02'19"
B23*	B5408	C 17.74	159°32'56"
B5408	B9	C 1767.18	249°32'56"
B9	B10	C 16.66	249°32'56"
B10	B11	C 63.48	249°32'56"
B11	B12	C 263.83	249°32'56"
B12	B13	C 859.79	230°43'33"
A	875.45	R 1332.39	DEL 37°38'47" LT
B13	B14	C 50.00	121°54'09"
B14	B15	C 55.95	210°39'09"
A	55.96	R 1282.39	DEL 2°30'01" LT
B15	B16	C 266.41	203°26'25"
A	266.89	R 1282.39	DEL 11°55'28" LT
B16	B5102	C 512.98	137°28'40"
B5102	B5101	C 304.63	277°28'40"
B5101	B1	C 565.88	17°28'40"

FROM	TO	DISTANCE (FT)	AZIMUTH
TE1	TE2	C 180.85	270°00'00"
TE2	TE3	C 50.00	0°00'00"
TE3	TE4	C 99.69	90°00'00"
TE4	TE5	C 29.37	49°35'14"

- SURVEY STANDARDS**
- The plat values, azimuths, and distances are based on the County coordinate system.
  - The boundary monuments shown on this plat have been field checked for location. The standard deviation for the monument position is 0.10 foot.
  - The county coordinates shown on one monument are based on ties to the National Spatial Reference System.
  - For details of this survey contact the Surveying Section at the Minnesota Department of Transportation, Rochester, Name of District

RIGHT OF WAY IN SECTION 30 C.S. 2001(14=7) 903							
PARCEL	OWNER	LOCATION	NEW T.H. R/W	PERMANENT DRIVEWAY EASEMENT	TEMPORARY EASEMENT	PERMANENT R/W INTEREST	
			ACRES MORE OR LESS	ACRES MORE OR LESS	ACRES MORE OR LESS		EXPIRES
54	DANIEL J. WELSH	SE1/4	2.74		0.59	12-01-2024	FEE
RIGHT OF WAY IN SECTION 31 C.S. 2001(14=7) 903							
53	LUKE SCHERGER	GOV'T LOT 1	0.15		0.08	12-01-2024	FEE
200	DAKOTA, MINNESOTA & EASTERN RAILROAD CORPORATION	GOV'T LOT 1 & 2 NW1/4 NE1/4	0.70		0.25	12-01-2024	EASEMENT
RIGHT OF WAY IN SECTIONS 30 & 31 C.S. 2001(14=7) 903							
52A	LARRY R. SCHERGER REVOCABLE TRUST & TRUST B OF THE BETTE J. SCHERGER REVOCABLE TRUST	NW1/4 NE1/4 SEC. 31 GOV'T LOTS 1 & 2 SEC. 31 GOV'T LOTS 11 & 12 SEC. 30 SW1/4 SE1/4 SEC. 30	16.21	3.21	4.35	12-01-2024	FEE

NOTE: FOR BALANCE OF PAR. 200 SEE PLAT 20-51



DOC. NO. 227547  
OFFICE OF COUNTY RECORDER  
DODGE COUNTY, MINNESOTA  
I HEREBY CERTIFY THAT THIS PLAT HAS BEEN FILED IN THIS OFFICE ON 1-14, 2019, AT 8:00 AM IN CAB. B NO. 165-B  
COUNTY RECORDER

PLAT NO. 20-54  
C.S. 2006 (56=56-21-1)  
C.S. 2001 (14=7) 903