

# STATE HIGHWAY RIGHT OF WAY PLAT No. 20 - 6

STATE PROJECT 2002(14-7)901

IN THE SOUTH ONE HALF OF SECTION 34, T. 107 N., R. 16 W. AND  
IN THE NORTH ONE HALF OF SECTION 3, T. 106 N., R. 16 W.  
DODGE COUNTY, MINNESOTA

THE COMMISSIONER OF HIGHWAYS IS HEREBY DESIGNATING THE DEFINITE  
LOCATION OF TRUNK HIGHWAY NO. 14 FROM 0.5 MILE WEST OF  
KASSON TO THE EAST COUNTY LINE.

RIGHT OF WAY IN SECTION 34								
PARCEL	OWNER	LOCATION	TORREN'S CERTIFICATE NO.	NEW TH. R/W	TEMPORARY EASEMENT ACRES (MORE OR LESS)	BUILDING REMOVAL EASEMENT	EASEMENT EXPIRES ON	PERMANENT R/W INTEREST
21	Ervin D. Marti	S 1/2 SW 1/4		13.05				Fee
23	Walter Lundquist	SE 1/4 SW 1/4 S 1/2 SE 1/4		21.92				Fee
RIGHT OF WAY IN SECTION 3								
22	Ernest F. Beader	NW 1/4 NW 1/4						Access
RIGHT OF WAY IN SECTIONS 3 & 34								
24	Ralph L. Herbst	SE 1/4 SE 1/4, Sec. 34 N 1/2 NE 1/4, Sec. 3 N 1/2 NW 1/4, Sec. 3		8.08	.08			Fee

As shown on this plat prepared by the State of Minnesota Department of Highways, is hereby certified as the official plat of that portion of said T.H. 14 within the designated portion of Sections 3 and 34, and the Commissioner's Order therefor, pursuant to Minnesota Laws of 1969, Chapters 207, 208 and 209 (now codified as Minnesota Statutes 1969, section 161.16 subd. 2, section 160.14 subd. 1, and section 160.085 respectively).

Commissioner's Order No.	Location	Nature of Interest
56745	PLAT 20-1 THRU 20-9	Definite location, width, access, temporary easement and building removal easement.

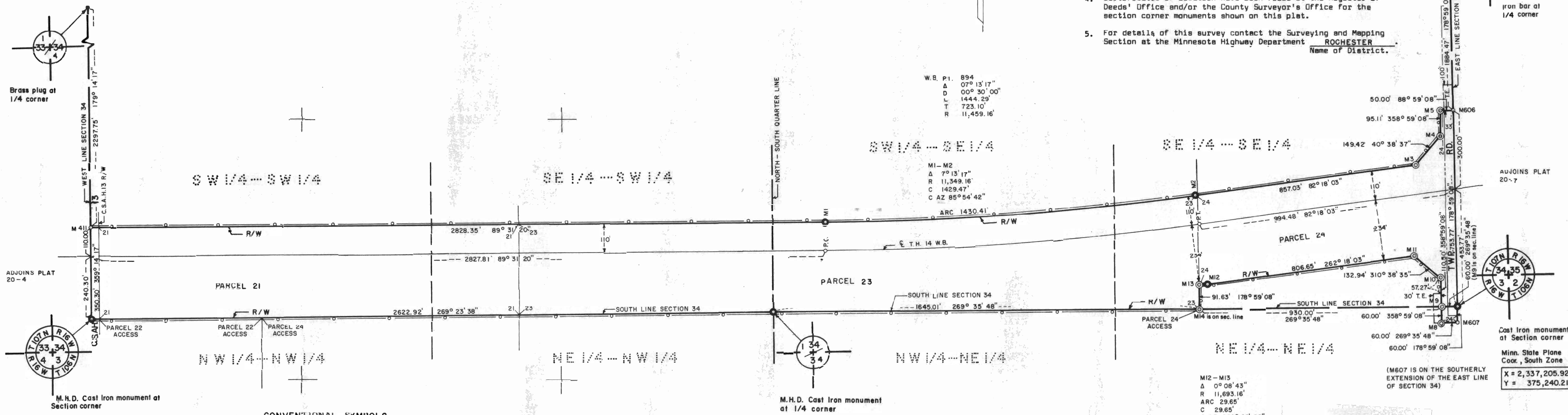
Recommended for Certification: Frank D. Marzetti 7-23-75 Date  
 Certified: Frank D. Marzetti 7-23-75 Date  
 R. G. Brennan 7-23-75 Date  
 Director of R/W Operations Frank D. Marzetti Commissioner of Highways

I hereby certify that this plat was prepared by me or under my direct supervision and is a correct representation of said survey; that all distances are horizontal ground distances in feet; that differences between azimuths represent plane angles in degrees, minutes and seconds; that the monuments to delineate this survey have been placed in the ground as shown on the plat; and that the right-of-way boundary lines are designated on the plat.

Certified by John E. Suenen 10460 Reg. No. 7-22-75 Date  
 Registered Land Surveyor

### Survey Standards

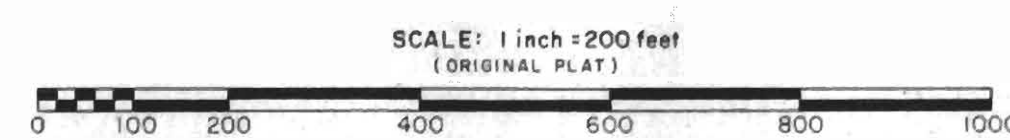
- The plat values, azimuths and distances, are based on the project control survey system.
- The boundary monuments shown on this plat have been field checked for location. The standard deviation for the monument positions is 0.1 ft.
- The state plane coordinates shown on one monument are based on ties to national control monuments.
- Certificates of Location have been filed at the Register of Deeds' Office and/or the County Surveyor's Office for the section corner monuments shown on this plat.
- For details of this survey contact the Surveying and Mapping Section at the Minnesota Highway Department ROCHESTER Name of District.



CONVENTIONAL SYMBOLS

Section Line	Building Removal Easement	B.R.E.
Quarter Line	R/W Parcel Number	
Sixteenth Line	Access Control	
Property Line	Access Opening	open
R/W Boundary	Cast Iron Monument or 1/2" M.H.D. Iron Pipe with Aluminum Cap	
Existing M.H.D. R/W Line	3/4" M.H.D. Iron Pin	
Other Road R/W's	Other Iron Monuments	
Railroad R/W	Concrete or Stone Monument	
Private Easement	R/W Boundary Corner	
Temporary Easement		

AZIMUTH ORIENTATION AND GRID CONVERSION  
 Plat azimuths are oriented to Minnesota State Plane Coordinate System with 0 degrees 0 minutes 0 seconds being "GRID NORTH".  
 Plat distances are ground lengths and can be converted to Minnesota State Plane Grid lengths by multiplying Plat distances by 0.9998954



L 5-6

DOC. NO. 37373  
 OFFICE OF REGISTER OF DEEDS  
 DODGE COUNTY, MINN.  
 I HEREBY CERTIFY THAT THIS PLAT HAS BEEN FILED IN THIS OFFICE AT 1:00 P.M. ON 7-19-75 BOOK OF 191, 19 PAGE 19  
David C. Beehoff  
 REGISTER OF DEEDS