

STATE HIGHWAY RIGHT OF WAY PLAT No. 20-9

STATE PROJECT 2002(14-7)901

IN THE EAST ONE HALF OF SECTION 31, T. 107 N., R. 16 W. AND
IN THE WEST ONE HALF OF SECTION 32, T. 107 N., R. 16 W.
DODGE COUNTY, MINNESOTA

THE COMMISSIONER OF HIGHWAYS IS HEREBY DESIGNATING THE DEFINITE LOCATION OF TRUNK HIGHWAY NO. 14 FROM 0.5 MILE WEST OF KASSON TO THE EAST COUNTY LINE

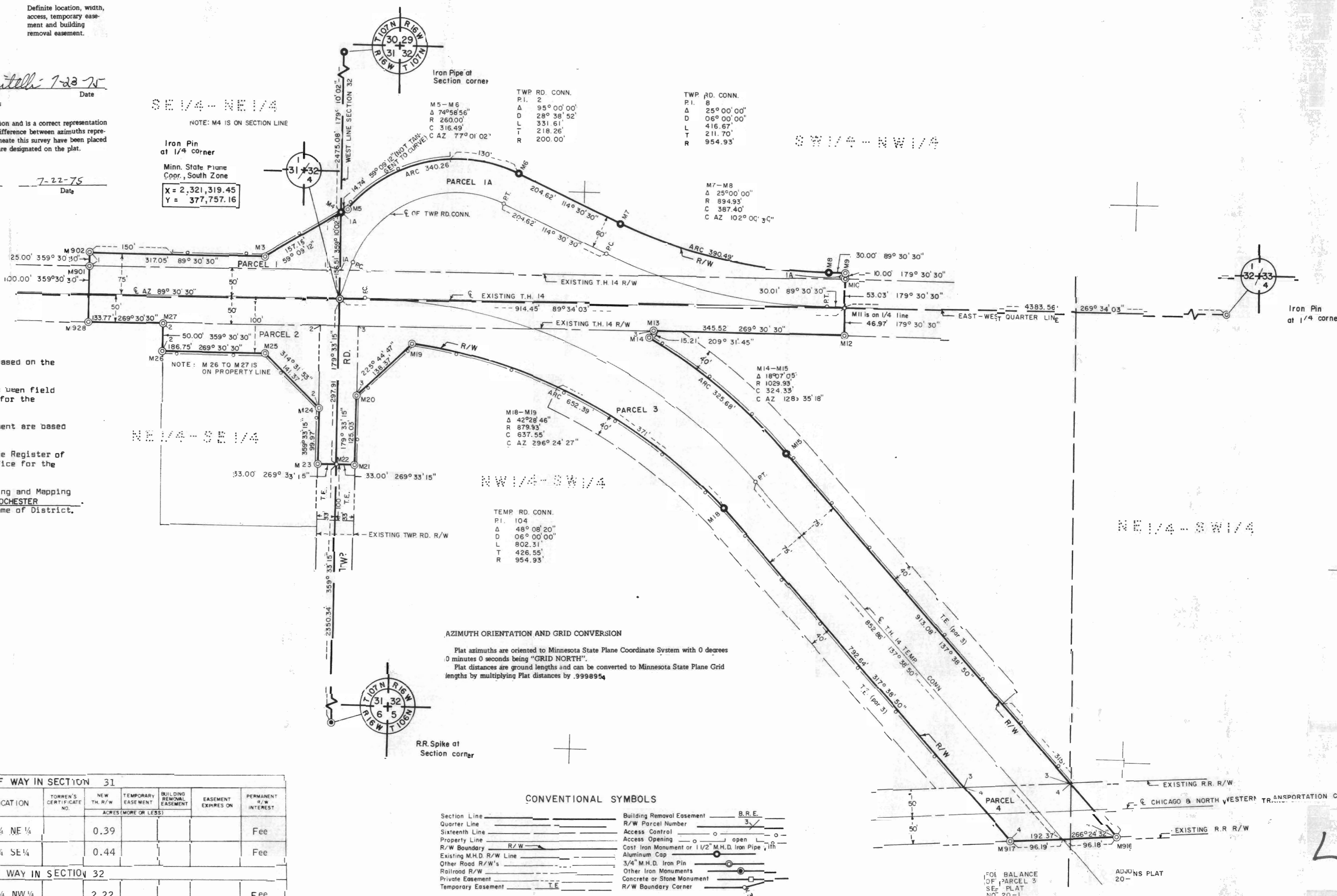
As shown on this plat prepared by the State of Minnesota Department of Highways, is hereby certified as the official plat of that portion of said T.H. 14 within the designated portion of Sections 31 and 32, and the Commissioner's Order therefor, pursuant to Minnesota Laws of 1969, Chapters 207, 208 and 209 (now codified as Minnesota Statutes 1969, section 161.16 subd. 2, section 160.14 subd. 1, and section 160.085 respectively).

Commissioner's Order No. 56745 Location Plats 20-1 Thru 20-9 Nature of Interest Definite location, width, access, temporary easement and building removal easement.

Recommended for Certification: R. G. Brennan, Director of R/W Operations, Date 7-23-75
Certified: Frank D. Marzitelli, Commissioner of Highways, Date 7-23-75

I hereby certify that this plat was prepared by me or under my direct supervision and is a correct representation of said survey; that all distances are horizontal ground distances in feet; that difference between azimuths represent plane angles in degrees, minutes and seconds; that the monuments to delineate this survey have been placed in the ground as shown on the plat; and that the right-of-way boundary lines are designated on the plat.

Certified by John E. Suenen, Registered Land Surveyor, 10460, 7-22-75, Date



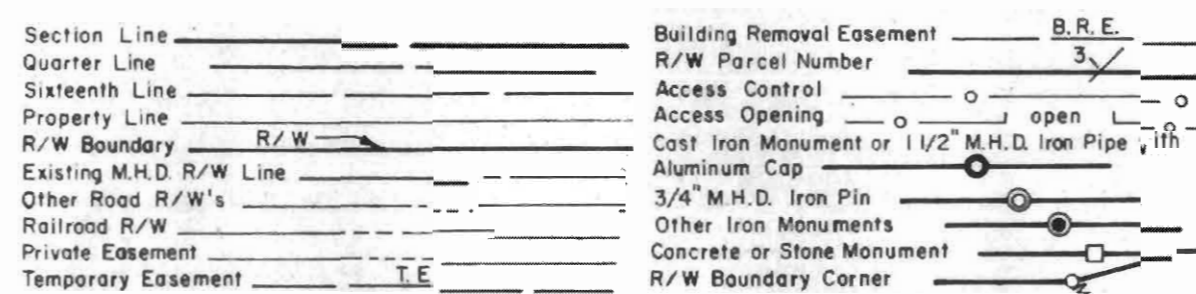
Survey Standards

- The plat values, azimuths and distances, are based on the project control survey system.
- The boundary monuments shown on this plat have been field checked for location. The standard deviation for the monument positions is 0.1 ft.
- The state plane coordinates shown on one monument are based on ties to national control monuments.
- Certificates of Location have been filed at the Register of Deeds' Office and/or the County Surveyor's Office for the section corner monuments shown on this plat.
- For details of this survey contact the Surveying and Mapping Section at the Minnesota Highway Department ROCHESTER, Name of District.

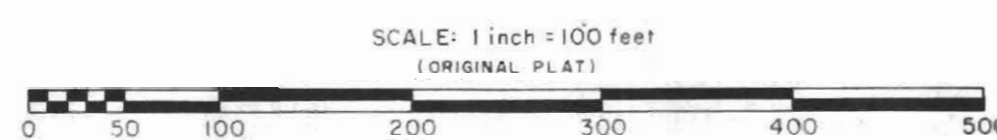
AZIMUTH ORIENTATION AND GRID CONVERSION

Plat azimuths are oriented to Minnesota State Plane Coordinate System with 0 degrees 0 minutes 0 seconds being "GRID NORTH".
Flat distances are ground lengths and can be converted to Minnesota State Plane Grid lengths by multiplying flat distances by .9998954

CONVENTIONAL SYMBOLS



DISTANCES SHOWN TO FEET (66,80 ETC.) ARE EXACT EXTRINSIC VALUES



RIGHT OF WAY IN SECTION 31							
PARCEL	OWNER	LOCATION	TORREN'S CERTIFICATE NO.	NEW T.H. R/W ACRES (MORE OR LESS)	TEMPORARY EASEMENT	BUILDING REMOVAL EASEMENT	PERMANENT R/W INTEREST
1	Henry E. Giese	SE 1/4 NE 1/4		0.39			Fee
2	Sherman Edgar	NE 1/4 SE 1/4		0.44			Fee
RIGHT OF WAY IN SECTION 32							
1 A	Harold L. Miese	SW 1/4 NW 1/4		2.22			Fee
3	Elna Beulah Frost	N 1/2 SW 1/4		4.50	1.70	12-1-77	Fee
4	Chicago & NorthWestern Transportation Co.	N 1/2 SW 1/4		0.45			Ease

L5-3

DOC NO. 37376

OFFICE OF REGISTER OF DEEDS
DODGE COUNTY, MINN.

I HEREBY CERTIFY THAT THIS PLAT HAS BEEN FILED IN THIS OFFICE AT 1:00 P.M. ON 8-7-75 IN BOOK 19 OF PAGE 19 REGISTER OF DEEDS

PLAT NO. 20-9
S.P. 2002 (14-7)901