

## GREYSTONE SUBDIVISION

## BEARINGS

All Bearings are in relationship with the the Dodge County Coordinate System NAD 83, Adjusted 1996.

## UTILITY EASEMENT DEFINED

An unobstructed easement for the construction and maintenance of all necessary overhead, underground or surface public utilities, including rights to conduct drainage and trimming on said easement.

U.E. = UTILITY EASEMENT

## INSTRUMENT OF DEDICATION

KNOW ALL MEN BY THESE PRESENTS: That TK & K Properties, L.L.C., a Minnesota Limited Liability Company, and Alicia Thompson, a single person, being owners and proprietors, and United Prairie Bank, a Minnesota Corporation, and Countrywide Home Loans, Inc., organized under the laws of the State of New York, being mortgagees of the following described property situated in the County of Dodge, State of Minnesota, to wit:

Lot Fifty-five (55) and West 2/5 of Lot Fifty-six (56) (as monumented) in COUNTY AUDITOR'S SECOND ADDITION to the Village, now City, of Dodge Center, all being in the Northwest Quarter of the Southeast Quarter of Section 34, Township 107 North, Range 17 West, Dodge County, Minnesota.

Said Parcel contains 3.14 acres, more or less.

Have caused the same to be surveyed and platted as GREYSTONE SUBDIVISION and do hereby donate and dedicate to the public for public use forever the thoroughfares and the easements as shown on this plat.

In witness whereof, said TK & K Properties, L.L.C., a Minnesota Limited Liability Company, has caused these presents to be signed by its proper officer this 18 day of January, 2007.

STATE OF MINNESOTA  
COUNTY OF DODGE

The foregoing instrument was acknowledged before me this 18th day of January, 2007, by Tracy Mullenbach, its President TK & K Properties, L.L.C., a Minnesota Limited Liability Company.

Becky L. Lulsh  
Notary Public, Dodge County  
My Commission Expires 1/31/10

In witness whereof, said United Prairie Bank, a Minnesota Corporation, has caused these presents to be signed by its proper officer this 11th day of July, 2006.

STATE OF MINNESOTA  
COUNTY OF DODGE

The foregoing instrument was acknowledged before me this 11th day of July, 2006, by Patrick A. Segler, its President and by Bradley S. Bryner, its Vice President United Prairie Bank, a Minnesota Corporation

Stacy Jean Wiley  
Notary Public, Dodge County  
My Commission Expires 1-31-09

In witness whereof, said Alicia Thompson, a single person, has caused these presents to be signed this 23 day of August, 2006.

STATE OF MINNESOTA  
COUNTY OF Dodge

The foregoing instrument was acknowledged before me this 23 day of August, 2006, by Alicia Thompson, a single person.

Brian Hughes  
Notary Public, Dodge County  
My Commission Expires 1-31-2010

In witness whereof, said Countrywide Home Loans, Inc., organized under the laws of the State of New York, has caused these presents to be signed by its proper officers this 10th day of January, 2007.

Terri Stallings, Vice President

STATE OF CALIFORNIA  
COUNTY OF VENTURA

The foregoing instrument was acknowledged before me this 10th day of January, 2007, by Terri Stallings, and Lorena Castillo-Ruiz, its Assistant Secretary Countrywide Home Loans, Inc., organized under the laws of the State of New York.

Angelia Z...  
Notary Public, Ventura County  
My Commission Expires Dec. 23, 2007

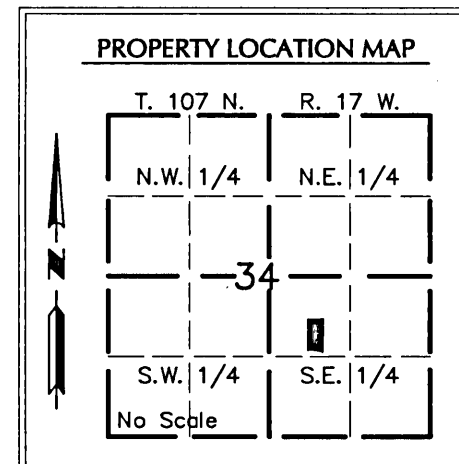
Angelia Z...  
Notary Public, Ventura County  
My Commission Expires Dec. 23, 2007

## MONUMENTS

- Set (5/8" pipe unless noted otherwise)
- Found Monuments (5/8" pipe (unless noted otherwise))

All monuments set have a plastic cap stamped L.S. 41814.

0 25 50 75 100  
SCALE IN FEET

CITY OF DODGE CENTER  
PLANNING AND ZONING COMMISSION

This plat of GREYSTONE SUBDIVISION has been approved by the Planning and Zoning Commission of the City of Dodge Center, Minnesota this 26th day of JUNE, 2006.

Phillip A. Gross  
Chair  
Victoria Schweiger  
Secretary

CITY OF DODGE CENTER  
CITY COUNCIL

This plat of GREYSTONE SUBDIVISION has been approved by the City Council of the City of Dodge Center, Minnesota on this 27th day of JUNE, 2006.

Mike Kiehn  
Mayor  
De A. Mattson  
City Clerk

## COUNTY SURVEYOR

I certify that this plat has been checked mathematically and that the plat conforms to applicable platting laws.

This 18th day of January, 2007.

Roger W. Brand  
Roger W. Brand  
Dodge County Surveyor

COUNTY OF DODGE  
AUDITOR/TREASURER

Taxes payable in the year 2007, on the land herein before described, have been paid; there are no delinquent taxes and transfer has been entered, on this January 18 day of January, 2007.

S. A. Korman  
Dodge County Auditor/Treasurer

by \_\_\_\_\_ Deputy

## COUNTY RECORDER

Document Number 170145

I hereby certify that this instrument was filed in the Office of the County Recorder for record on this 18th day of January, 2007 at 2:30 o'clock p.m. and was duly recorded in Book B of Plats on page 125.

Joe A. Alberts  
Dodge County Recorder

## SURVEYOR'S CERTIFICATE

I do hereby certify that I have surveyed and platted the property described on this plat as GREYSTONE SUBDIVISION; that this plat is a correct representation of said survey; that all distances are correctly shown on said plat in feet and hundredths of a foot; that all monuments have been correctly placed in the ground as shown; that the outside boundary lines are correctly designated; that there are no wet lands as defined in MS 505.02, SUBD. 1, or public highways to be designated on said plat other than as shown.

Richard J. Massey  
Richard J. Massey  
Minnesota L.S. No. 41814

STATE OF MINNESOTA  
COUNTY OF DODGE

The foregoing Surveyor's Certificate was acknowledged before me this 30th day of JUNE, 2006, by Richard J. Massey, L.S. No. 41814.

Richard A. Singbusch  
Notary Public, Minnesota  
My Commission Expires Jan 31, 2010

Richard A. Singbusch  
Notary Public, Dodge County, MN  
My Commission Expires 1-31-2010

**MASSEY**  
LAND SURVEYING & ENGINEERING  
P.O. BOX 428, KASSON, MN 55944  
PH. NO. 507-634-4505, FAX NO. 507-634-6560

