

# MATHIAS SUBDIVISION

I hereby certify that I have surveyed and platted the property described on this plat as MATHIAS SUBDIVISION; that this is a correct representation of the survey; that all distances are correctly shown on the plat in feet and hundredths of a foot; that all monuments have been correctly placed in the ground as shown; that the outside boundary lines are correctly designated on the plat and that there are no wet lands as defined in Minnesota Statute 505.02, Subdivision 1, or public highways to be designated other than as shown.

Vincent A. Fangman  
Vincent A. Fangman Minnesota License No. 14888

State of Minnesota  
County of Olmsted

The surveyor's certificate was subscribed and sworn to before me a Notary Public, this 25<sup>th</sup> day of April, 2007, by Vincent A. Fangman, Licensed Surveyor.

Vincent A. Fangman  
Notary Public, Olmsted County, Minnesota

My commission expires 1-31-2010

Taxes payable in the year 2007, on real estate herein before described, have been paid; there are no delinquent taxes and transfer has been entered, on this 12<sup>th</sup> day of September, 2007.

Lisa A. Kramer  
Dodge County Auditor/Treasurer

by Scott Olmsted Deputy

I certify that this plat has been checked mathematically and approved this 7<sup>th</sup> day of September, 2007.

Roger W. Brand  
Dodge County Surveyor

We do hereby certify that on the 25<sup>th</sup> day of April, 2007, the City Council of West Concord, Minnesota approved this plat.

Burton Boe Mayor  
Scott Olmsted City Administrator

Approved by the Planning Commission of the West Concord, Minnesota, at a meeting thereof, on the 25<sup>th</sup> day of April, 2007.

Burton Boe  
Commission Chairman

In witness whereof said City of West Concord, a Minnesota Corporation, has caused these presents to be signed by its proper officers this 25<sup>th</sup> day of April, 2007.

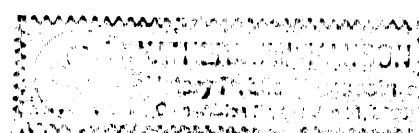
Burton Boe  
Mayor  
Scott Olmsted  
City Administrator

State of Minnesota  
County of Dodge

The foregoing instrument was acknowledged before me this 25<sup>th</sup> day of April, 2007 by Burton Boe its Mayor, and by Scott Olmsted its Administrator, City of West Concord, on behalf of the corporation.

Katherine A. Johnson  
Notary Public, Dodge County, Minnesota

My commission expires 01-31-2009



In witness whereof said Dennis A. French and Margaret D. French, husband and wife, have caused these presents to be signed this 26 day of July, 2007.

Dennis A. French  
Margaret D. French  
Dennis A. French  
Margaret D. French

State of Minnesota  
County of Dodge

The foregoing instrument was acknowledged before me this 26 day of July, 2007 by Dennis A. French and Margaret D. French, husband and wife.

Katherine A. Johnson  
Notary Public, Dodge County, Minnesota

My commission expires 1-31-09

~~In witness whereof said GMAC Mortgage, a National Corporation, mortgagee, has caused these presents to be signed by its proper officers this \_\_\_\_\_ day of \_\_\_\_\_, 20\_\_\_\_.~~

~~By \_\_\_\_\_ its \_\_\_\_\_~~

~~State of \_\_\_\_\_~~  
~~County of \_\_\_\_\_~~

~~The foregoing instrument was acknowledged before me this \_\_\_\_\_ day of \_\_\_\_\_, 20\_\_\_\_ by \_\_\_\_\_ its \_\_\_\_\_~~

~~GMAC Mortgage, a National Corporation, mortgagee, on behalf of the corporation~~

~~Notary Public, \_\_\_\_\_ County, Minnesota~~

~~My commission expires \_\_\_\_\_ V.A.F.~~

KNOW ALL MEN BY THESE PRESENT: The City of West Concord, a Minnesota Corporation, and Dennis A. French and Margaret D. French, husband and wife, owners and proprietors, ~~and GMAC V.A.F. Mortgage, a National Corporation, mortgagee~~, of the following described property situated in the City of West Concord, State of Minnesota, to wit:

That part of the Southwest Quarter of the Northeast Quarter of Section 19, Township 108 North, Range 17 West, Dodge County, Minnesota, City of West Concord described as follows:

Commencing at the southwest corner of the Northeast Quarter of said Section 19; thence N89°38'32"E, (for the purpose of this description all bearings are in relation to the Dodge County Coordinate System NAD83 (1996 Adjustment), 1322.38 feet to the southeast corner of the Southwest Quarter of said Northeast Quarter; thence N00°38'00"E, along the east line of the Southwest Quarter of said Northeast Quarter, 330.05 feet to a point being 330.00 feet north of, as measured at right angles to, the south line of said Northeast Quarter for a point of beginning; thence continue N00°38'00"E, along said east line, 216.16 feet; thence N89°42'15"W, 190.00 feet; thence N00°38'00"E, 110.00 feet; thence S89°42'15"E, 190.00 feet to the east line of the Southwest Quarter of said Northeast Quarter; thence N00°38'00"E, along said east line, 40.00 feet; thence N89°42'15"W, 190.00 feet; thence N00°38'00"E, 62.00 feet; thence S89°42'15"E, 190.00 feet to the east line of the Southwest Quarter of said Northeast Quarter; thence N00°38'00"E, along said east line, 103.00 feet; thence N89°42'15"W, 340.00 feet; thence N00°38'00"E, 165.17 feet to the south line of Sunset Addition, as platted in said Northeast Quarter; thence N89°36'07"W, along the south line of said Sunset Addition, 477.01 feet to the southwest corner of said Sunset Addition; thence S00°23'53"W, 381.00 feet; thence S89°36'07"E, 350.52 feet to a point being 858.00 feet east of, as measured at right angles to, the west line of said Northeast Quarter; thence S00°34'13"W, parallel with the west line of said Northeast Quarter, 320.85 feet to a point being 330.00 feet north of, as measured at right angles to the south line of said Northeast Quarter; thence N89°38'32"E, parallel with the south line of said Northeast Quarter, 464.63 feet to the point of beginning.

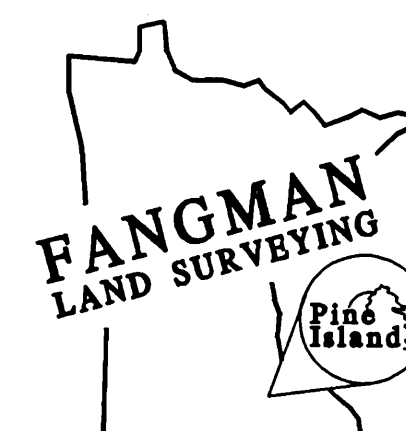
Containing 8.49 acres, more or less.

Have caused the same to be surveyed and platted as MATHIAS SUBDIVISION, and do hereby dedicate to the public, for the public use forever the thoroughfares and dedicate the easements, for drainage and utility purposes only, as shown on this plat.

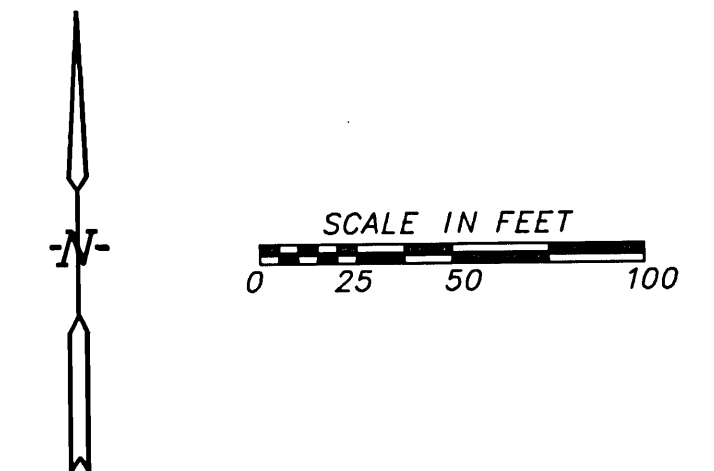
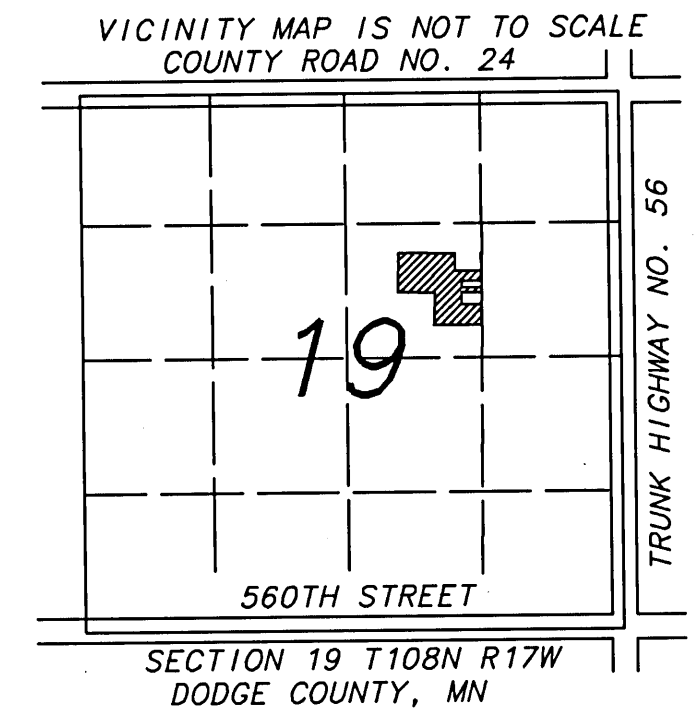
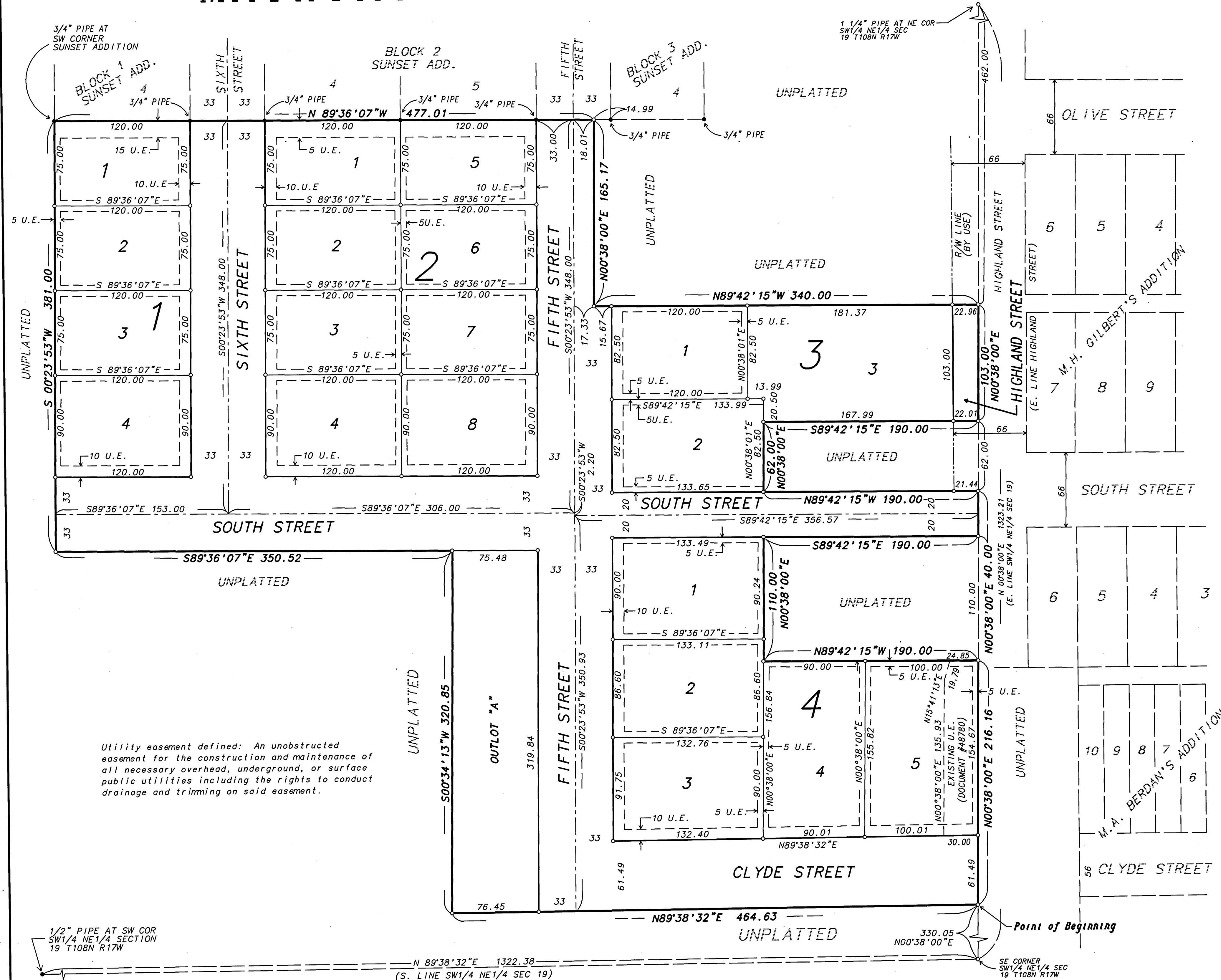
Document Number 173385

I hereby certify that this instrument was filed in the office of the County Recorder for record this 14<sup>th</sup> day of September, 2007, at 3:30 o'clock P.M., and was duly recorded in Book B of Plats on page 131.

Lisa A. Alberts  
County Recorder  
Dodge County, Minnesota



# MATHIAS SUBDIVISION



Monuments shown thus:  $\circ$  are set 1/2" pipes with plastic cap bearing license no. 14888

Monuments shown thus:  $\bullet$  are found monuments as indicated.

All bearings are in relation to the Dodge County Coordinate System NAD83 (1996 Adjustment)

