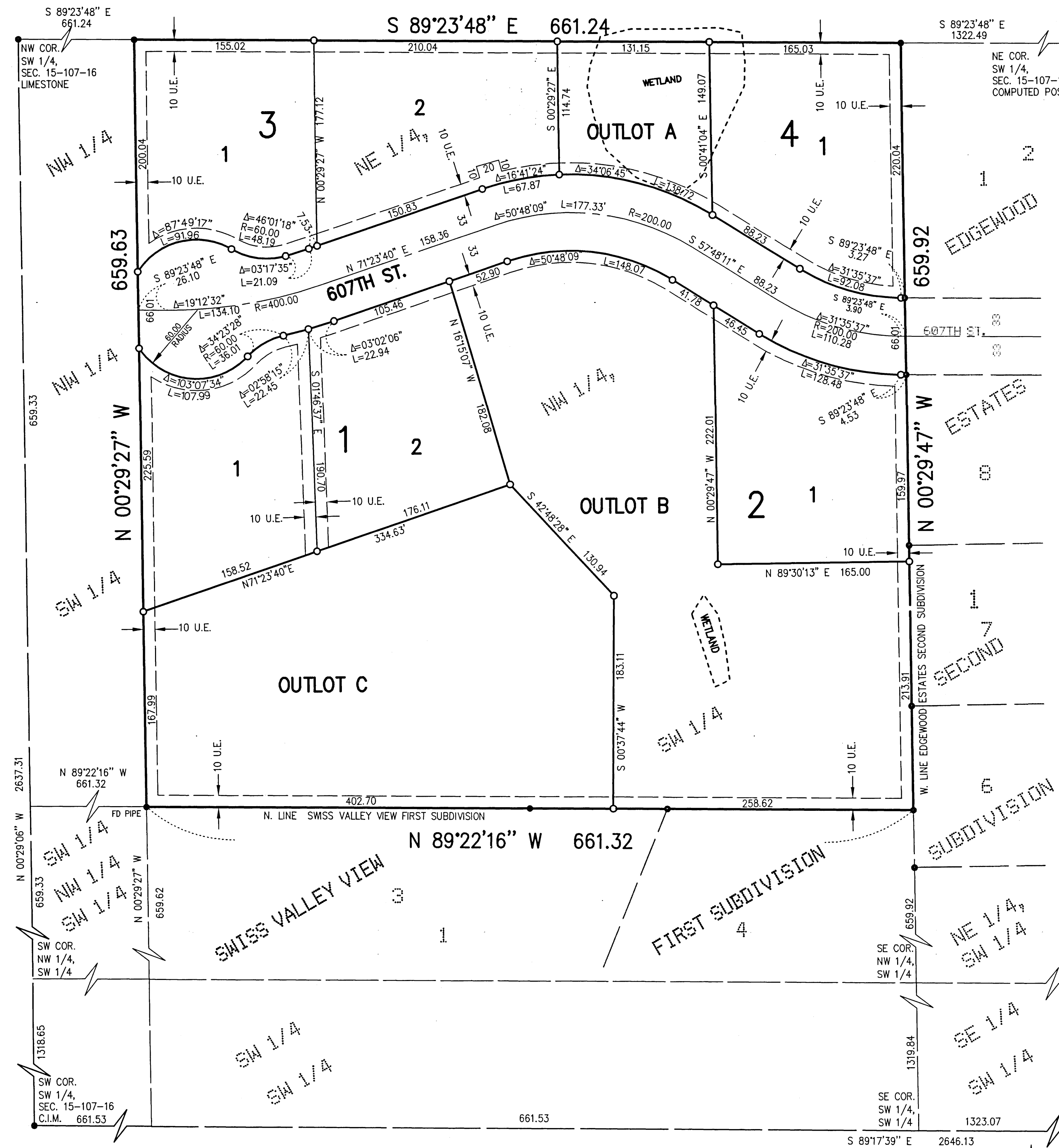


NORTHVIEW



INSTRUMENT OF DEDICATION
 KNOW ALL MEN BY THESE PRESENTS: That Jay D. Harris and Denise Y. Harris husband and wife, being owners and proprietors of the following described property situated in the County of Dodge, State of Minnesota, to wit:

The Northeast Quarter of the Northwest Quarter of the Southwest Quarter of Section 15, Township 107 North, Range 16 West, Dodge County, Minnesota. Said parcel contains 10.01 acres, more or less.

Have caused the same to be surveyed and platted as NORTHVIEW and do hereby donate and dedicate to the public for public use forever the public ways and the easements as shown on this plat.

In witness whereof, said Jay D. Harris and Denise Y. Harris have hereunto set their hands the 5 day of February, 2008.

Jay D. Harris
 Jay D. Harris
Denise Y. Harris
 Denise Y. Harris

STATE OF MINNESOTA
 COUNTY OF Dodge
 The foregoing instrument was acknowledged before me the 5th day of February, 2008 by Jay D. Harris and Denise Y. Harris, husband and wife.

Andrew K. Marshall
 Notary Public, Dodge County, MN
 My Commission Expires Jan. 31, 2010

COUNTY BOARD OF COMMISSIONERS
 We do hereby certify that on the 13th day of November, 2007, the Board of Commissioners of Dodge County, Minnesota, approved this plat.

Don D. Long
 Chairman
David McKnight
 Attest:

TOWNSHIP BOARD OF SUPERVISORS
 The Township Board of Supervisors for Mantorville Township, Dodge County, Minnesota do hereby certify that we have approved the accompanying plat. In testimony whereof, we have signed our names the 7 day of January, 2008.

Andy Buchwalter
 Board Chairperson
Sharon Ross
 Town Clerk

COUNTY PLANNING COMMISSION
 Approved by the Planning Commission of the County of Dodge, Minnesota, at a regular meeting thereof, on the 6th day of February, 2008.

Malen M. John
 Chairman

CITY OF MANTORVILLE PLANNING AND ZONING COMMISSION
 This plat of NORTHVIEW has been approved by the Planning and Zoning Commission of the City of Mantorville, Minnesota the 5 day of December, 2007.

Mauley
 Chairman

CITY OF MANTORVILLE CITY COUNCIL
 This plat of NORTHVIEW has been approved by the City Council of the City of Mantorville, Minnesota on the 5 day of December, 2007.

Thomas A. Bill
 Mayor
David L. Byer
 City Clerk

COUNTY SURVEYOR
 I certify that this plat has been checked mathematically and that the plat conforms to applicable platting laws.

the 21st day of February, 2008

Roger W. Brand
 Roger W. Brand
 Dodge County Surveyor

COUNTY AUDITOR/TREASURER
 Taxes payable in the year 2008 on the land herein described have been paid, there are no delinquent taxes and transfer has been entered the 3 day of March, 2008.

S. A. Kramer
 Dodge County Auditor/Treasurer
 By _____ Deputy

COUNTY RECORDER
 Document Number 176282
 I hereby certify that this instrument was filed in the Office of the County Recorder for record on the 3rd day of March, 2008, at 2:15 o'clock p.m. and was duly recorded in Dodge County Records, Book B Page 132.

Sue A. Roberts
 Dodge County Recorder

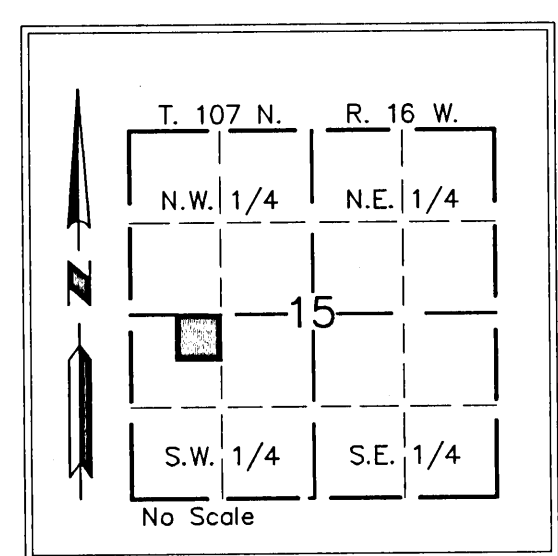
SURVEYOR'S CERTIFICATE
 I hereby certify that I have surveyed and platted the property described on this plat as NORTHVIEW, that this plat is a correct representation of the boundary survey; that all mathematical data and labels are correctly designated on the plat; that all monuments depicted on the plat have been or will be set within one year as indicated on the plat; that all water boundaries and wet lands as defined in MS 505.01, Subd. 3 existing as of the date of this certification are shown and labeled on the plat; and that all public ways are shown labeled on the plat.

Richard J. Massey
 Minnesota L.S. No. 41814

STATE OF MINNESOTA
 COUNTY OF OLMSTED
 The foregoing Surveyor's Certificate was acknowledged before me the 4th day of DECEMBER, 2007, by Richard J. Massey, L.S. No. 41814.

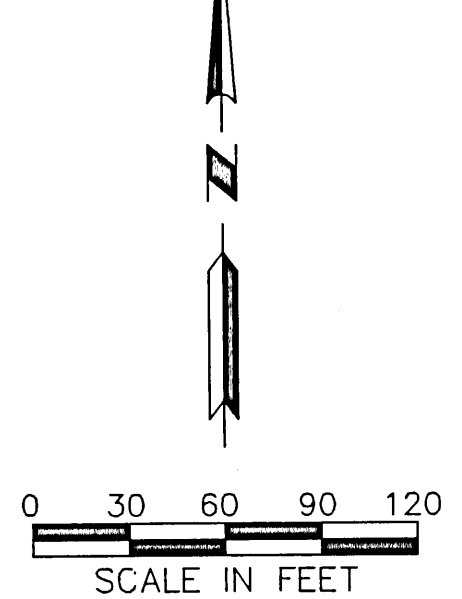
Brian C. Engen
 Notary Public - Minnesota
 My Commission Expires Jan. 31, 2012

Brian C. Engen
 Notary Public, OLMSTED County, MN
 My Commission Expires 1-31-2012



UTILITY EASEMENT DEFINED
 An unobstructed easement for the construction and maintenance of all necessary overhead, underground or surface public utilities, including rights to conduct drainage and trimming on said easement.
 U.E. = UTILITY EASEMENT
 UTILITY EASEMENTS ARE 10.00 WIDE UNLESS SHOWN OTHERWISE.

BEARINGS
 All Bearings are in relationship with the Dodge County Coordinate System NAD 83, Adjusted 1996.
 An utility and drainage easement is dedicated over all of Outlot A and Outlot B.
MONUMENTS
 ○ SET (5/8" PIPE UNLESS NOTED OTHERWISE)
 ● FOUND MONUMENTS (5/8" PIPE UNLESS NOTED OTHERWISE)
 All monuments set have a plastic cap stamped L.S. 41814.



PROJECT NUMBER: 1391

MASSEY
 LAND SURVEYING & ENGINEERING
 P.O. BOX 428, KASSON, MN 55944
 PH. NO. 507-634-4505, FAX NO. 507-634-6560