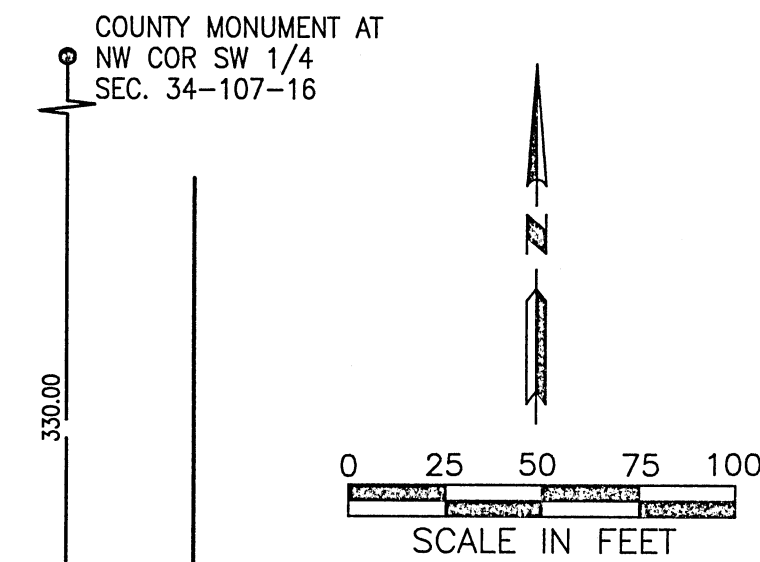


# LINDON MANOR REPLAT



## BEARINGS

Plat bearings are in relationship with the Dodge County Coordinate System NAD '83, Adjusted 1996.

EX. U.E. = Existing utility easement per Plat of LINDON MANOR

(Recorded Information)

## MONUMENTS

- SET (5/8" PIPE UNLESS NOTED OTHERWISE)
- Found Monuments (AS INDICATED)

S 89°38'09" E  
(N 89°36'26" E)

S 89°38'09" E  
(N 89°36'26" E)

S 89°38'09" E  
(N 89°36'26" E)

S 89°38'09" E  
(N 89°36'26" E)

S 89°38'09" E  
(N 89°36'26" E)

S 89°38'09" E  
(N 89°36'26" E)

S 89°38'09" E  
(N 89°36'26" E)

S 89°38'09" E  
(N 89°36'26" E)

S 89°38'09" E  
(N 89°36'26" E)

S 89°38'09" E  
(N 89°36'26" E)

S 89°38'09" E  
(N 89°36'26" E)

S 89°38'09" E  
(N 89°36'26" E)

S 89°38'09" E  
(N 89°36'26" E)

S 89°38'09" E  
(N 89°36'26" E)

S 89°38'09" E  
(N 89°36'26" E)

S 89°38'09" E  
(N 89°36'26" E)

S 89°38'09" E  
(N 89°36'26" E)

S 89°38'09" E  
(N 89°36'26" E)

S 89°38'09" E  
(N 89°36'26" E)

LINDON

OUTLOT A

OUTLOT B

OUTLOT C

OUTLOT D

OUTLOT E

OUTLOT F

OUTLOT G

OUTLOT H

OUTLOT I

OUTLOT J

OUTLOT K

OUTLOT L

OUTLOT M

OUTLOT N

OUTLOT O

OUTLOT P

OUTLOT Q

OUTLOT R

OUTLOT S

OUTLOT T

THIRD STREET SE

SECOND STREET SE

NINTH AVE. SE

TENTH AVENUE SE

MANOR

## INSTRUMENT OF DEDICATION

KNOW ALL MEN BY THESE PRESENTS: That The Economic Development Authority of the City of Kasson, a Public Body Corporate and Politic under the laws of the State of Minnesota, owner of the following described property situated in the county of Dodge, State of Minnesota, to wit:

That part of the Southwest Quarter of Section 34, Township 107 North, Range 16 West, Dodge County, Minnesota, described as follows:

All of Lots 1 and 2 Block 6, Lot 1 through Lot 5, and Lots 13 through Lot 18, Block 7, Lindon Manor according to the plat thereof on file at the County Recorder's Office, Dodge County, Minnesota.

Said tract contains 1.86 acres, more or less.

Have caused the same to be surveyed and platted as LINDON MANOR REPLAT.

In witness whereof said Economic Development Authority of the City of Kasson, a Public Body Corporate and Politic under the laws of the State of Minnesota, to be signed by its proper officers this 30<sup>th</sup> day of July, 2013.

Mary Ehrhke  
Mary Ehrhke, Chairperson

Mike Martin  
Mike Martin, Executive Director

STATE OF MINNESOTA  
COUNTY OF DODGE  
This instrument was acknowledged before me on this 30<sup>th</sup> day

of July, 2013, by Mary Ehrhke and Mike Martin, Chairperson and Executive Director respectively, of the Economic Development Authority of the City of Kasson, a Public Body and Politic under the laws of the State of Minnesota

Linda M. Raspe  
Notary Public, Dodge County  
My Commission Expires 1-31-15

STATE OF MINNESOTA  
COUNTY OF DODGE

The foregoing instrument was acknowledged before me this 30<sup>th</sup> day of July, 2013, by City of Kasson

Linda M. Raspe  
Notary Public, Dodge County  
My Commission Expires 1-31-15

CITY OF KASSON  
CITY COUNCIL

This plat of LINDON MANOR REPLAT has been approved by the City Council of the City of Kasson, Minnesota on this 24<sup>th</sup> day of April, 2013.

[Signature]  
Mayor  
[Signature]  
City Administrator

CITY OF KASSON  
PLANNING AND ZONING COMMISSION

This plat of LINDON MANOR REPLAT has been approved by the Planning and Zoning Commission of the City of Kasson, Minnesota this 11<sup>th</sup> day of February, 2013.

[Signature]  
Chair  
[Signature]  
Secretary

## COUNTY AUDITOR/TREASURER

Taxes payable in the year 2013 on the land herein described have been paid, there are no delinquent taxes and transfer has been entered the 31<sup>st</sup> day of July, 2013.

S. A. Krauer  
Dodge County Auditor/Treasurer  
By \_\_\_\_\_ Deputy

## COUNTY RECORDER

Document Number 202729

I hereby certify that this instrument was filed in the Office of the County Recorder for record on this 2nd day of August, 2013, at 2:15 o'clock P.m. and was duly recorded in Book B of Plats on page 146.

[Signature]  
Dodge County Recorder

## COUNTY SURVEYOR

Pursuant to Chapter 389.09, laws of Minnesota, this plat has been approved, this 1<sup>st</sup> day of August, 2013.

[Signature]  
Lisa M. Hanni, Dodge County Surveyor

## SURVEYOR'S CERTIFICATE

I hereby certify that I have surveyed and platted the property described on this plat as LINDON MANOR REPLAT; that this plat is a correct representation of the boundary survey; that all mathematical data and labels are correctly designated on the plat; that all monuments depicted on the plat have or will be correctly set within one year as indicated on the plat; that all water boundaries and wet lands as defined in MS 505.01, Subd. 3 existing as of the date of this certification are shown and labeled on the plat; and that all public ways are shown and labeled on the plat. Dated this 1st day of August, 2013.

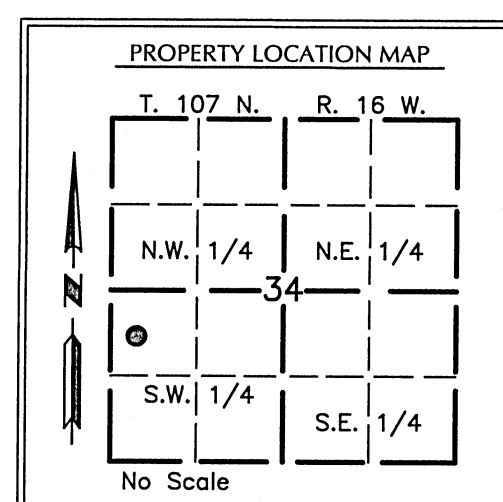
[Signature]  
Richard J. Massey  
Minnesota L.S. No. 41814

STATE OF MINNESOTA  
COUNTY OF DODGE

The foregoing Surveyor's Certificate was acknowledged before me this 1st day of July, 2013, by Richard J. Massey, L.S. No. 41814.

[Signature]  
Notary Public, Dodge County, MN  
My Commission Expires January 31, 2014

Karen Jo Paschke  
Notary Public-Minnesota  
My Comm. Expires Jan. 31, 2014



**MASSEY**  
LAND SURVEYING & ENGINEERING  
P.O. BOX 100, KASSON, MN 55944  
PH. NO. 507-634-4505, FAX NO. 507-634-6560

