

MATHIAS SECOND SUBDIVISION

COUNTY OF DODGE
AUDITOR/TREASURER

Taxes payable in the year 2016, on real estate herein before described, have been paid; there are no delinquent taxes and transfer has been entered, on this 21st day of December, 2016.

R. A. Knorr
Dodge County Auditor/Treasurer

INSTRUMENT OF DEDICATION

KNOW ALL MEN BY THESE PRESENTS: That the City of West Concord, a Minnesota Corporation, owners and proprietors, of the following described property situated in the County of Dodge, State of Minnesota, to wit:

That Part of the Northeast Quarter of Section 19, Township 108 North, Range 17 West, Dodge County, Minnesota, described as follows:

Lots 1, 2, & 3, Block 1, & Lots 1, 2, 3, 5, 6 & 7, Block 2, MATHIAS SUBDIVISION, according to the plat thereof on file at the County Recorder's Office, Dodge County, Minnesota.

Said parcel contains 1.86 acres more or less.

Have caused the same to be surveyed and platted as MATHIAS SECOND SUBDIVISION.

In witness whereof said City of West Concord, a Minnesota Corporation, has caused these presents to be signed this 13 day of December, 2016.

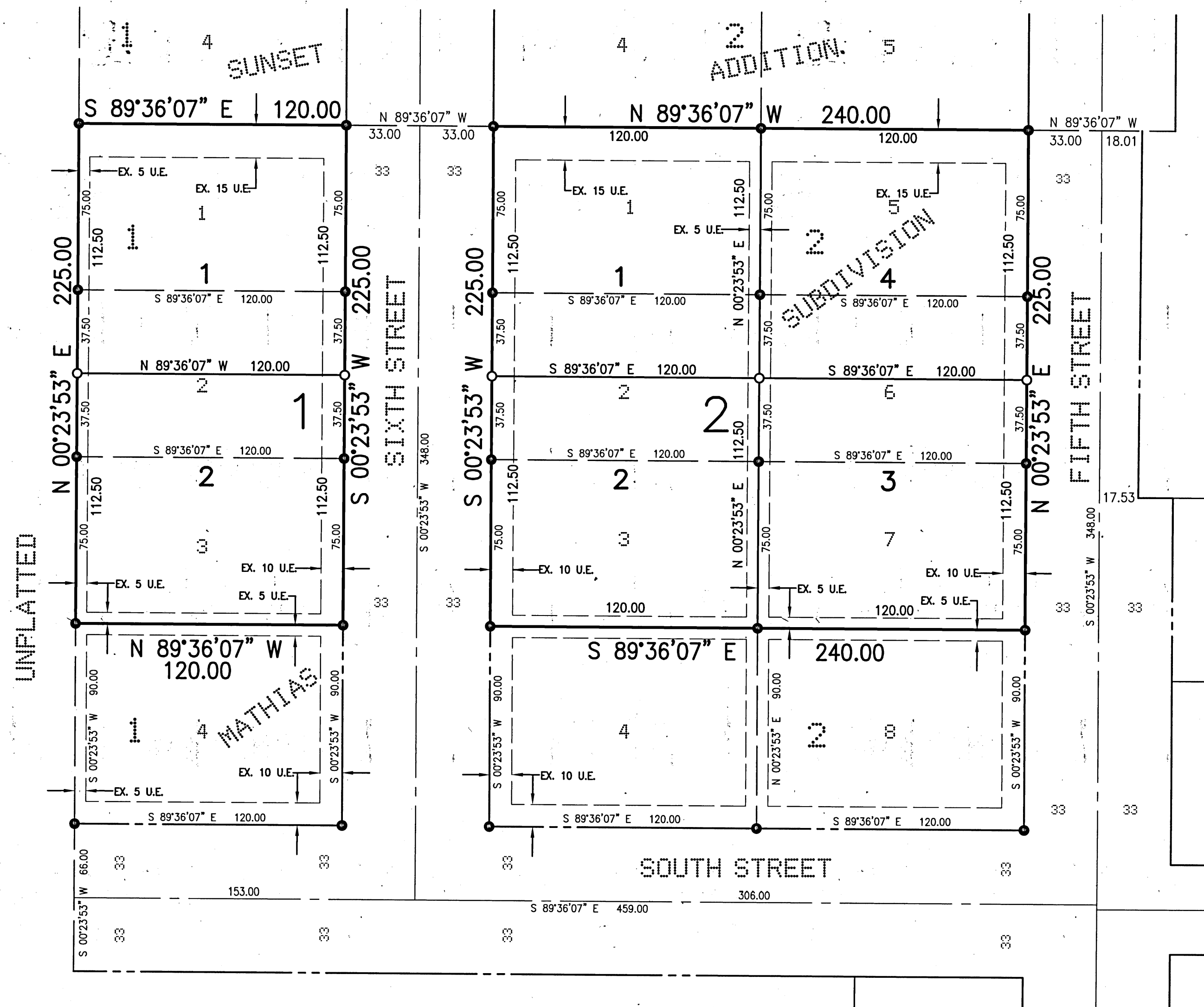
By Jeff S. Cool its Mayor
Kathleen Conson its City Clerk

STATE OF MINNESOTA
COUNTY OF Dodge
The foregoing instrument was acknowledged before me this 13 day of December, 2016 by Kathleen Conson its City Clerk
and by Jeffrey McCool its Mayor, City of West Concord.

[Signature]
Notary Public, Dodge County, MN
My Commission Expires Jan. 31, 2021

In witness whereof said City of West Concord, a Minnesota Corporation, has caused these presents to be signed this 13 day of December, 2016.

Jeffrey McCool
Jeffrey McCool
Mayor of West Concord



CITY OF WEST CONCORD
PLANNING AND ZONING COMMISSION

This plat of MATHIAS SECOND SUBDIVISION has been approved by the Planning and Zoning Commission of the City of West Concord this 5th day of December, 2016.

[Signature]
Chair Person
[Signature]
Secretary

CITY OF WEST CONCORD
CITY COUNCIL

This plat of MATHIAS SECOND SUBDIVISION has been approved by the City Council of the City of West Concord on this 5 day of December, 2016.

Jeff S. Cool
City Clerk

COUNTY SURVEYOR

I certify that pursuant to Chapter 389.09, laws of Minnesota, this plat has been approved this 20th day of December, 2016.

[Signature]
Lisa M. Hanni
Dodge County Surveyor

COUNTY RECORDER

Document Number 218973

I hereby certify that this instrument was filed in the Office of the County Recorder for record on this 21st day of December, 2016, at 9:30 o'clock a.m. and was duly recorded in Book B of Plats on page 154.

[Signature]
Dodge County Recorder

SURVEYOR'S CERTIFICATE

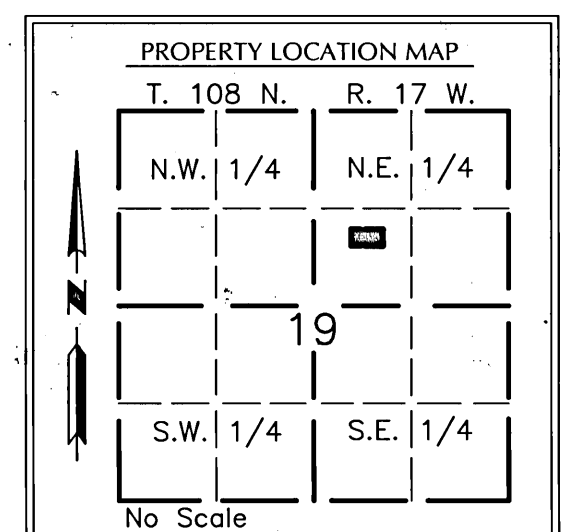
I do hereby certify that I have surveyed and platted the property described on this plat as MATHIAS SECOND SUBDIVISION; that this plat is a correct representation of the boundary survey; that all mathematical data and labels are correctly designated on the plat; all monuments depicted on the plat have been or will be correctly set within one year as indicated on the plat; that all water boundaries or wet lands as of the date of this certification are shown and labeled on the plat; and that all public ways are shown and labeled on the plat.

[Signature]
Richard J. Massey
Minnesota L.S. No. 41814

STATE OF MINNESOTA
COUNTY OF DODGE

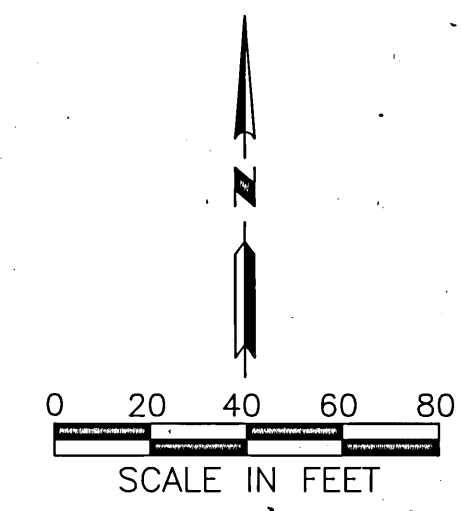
The foregoing Surveyor's Certificate was acknowledged before me this 2nd day of December, 2016, by Richard J. Massey, L.S. No. 41814.

[Signature]
Notary Public, Dodge County, MN
My Commission Expires Jan 31, 2021



- MONUMENTS
- SET (5/8" PIPE UNLESS NOTED OTHERWISE)
 - FOUND MONUMENTS (5/8" PIPE UNLESS NOTED OTHERWISE)
- All monuments set have a plastic cap stamped L.S. 41814.

BASIS OF BEARINGS
All Bearings are in relationship with the Dodge County Coordinate System NAD 1983, Adjusted 1996.



UTILITY EASEMENT DEFINED
An unobstructed easement for the construction and maintenance of all necessary overhead, underground or surface public utilities, including rights to conduct drainage and trimming on said easement.
U.E. = UTILITY EASEMENT
EX. U.E. = EXISTING PLATTED UTILITY EASEMENT PER MATHIAS SUBDIVISION

MASSEY
LAND SURVEYING & ENGINEERING
P.O. BOX 100, KASSON, MN 55944
PH. NO. 507-634-4505, FAX NO. 507-634-6560

PROJECT NUMBER: 2566 COMPUTER FILE: 2566SF01.DWG