

MANTOR WOODS WEST SUBDIVISION

INSTRUMENT OF DEDICATION

KNOW ALL MEN BY THESE PRESENTS: That HD Rentals LLC, a Minnesota Limited Liability Company being owner and proprietor and Olmsted National Bank, a Minnesota Corporation, mortgagee of the following described property in the County of Dodge, State of Minnesota, to wit:

Lots Two, Three, Four, Five, and Six, (2,3,4,5,6), and all of the Alley lying adjacent to Lots 2, 3, 4, 5, and 6, all within Block Twenty Six (26), ORIGINAL PLAT, City of Mantorville; AND Commencing at the Northwest corner of Lot 3, Block 26, in the City of Mantorville, thence East along the North line of said Block 26, a distance of 300 feet, thence North 7 rods, thence West 300 ft, thence South 7 rods to place of beginning. Said parcel being located in the Northwest Quarter of Section 16, Township 107 North, Range 16 West, Dodge County, Minnesota.

Subject to highway right of way containing 0.05 acres running along the Westerly edge of the above described premises as more particularly described in that final certificate recorded in Book 115 of Misc., page 285, all according to the Plat thereof on file and of record.

TOGETHER WITH:

The Northerly Half of vacated Tenth Street lying easterly of the alley through Block 26 and westerly of Block 27; All of vacated Blanch Street adjacent to Blocks 26 and 27 of said ORIGINAL PLAT.

Contains 2.14 Acres, more or less.

Has caused the same to be surveyed and platted as MANTOR WOODS WEST SUBDIVISION and do hereby dedicate to the public the public ways and the easements as shown on this plat.

In witness whereof said HD Rentals, LLC, a Minnesota Limited Liability Company, has caused these presents to be signed this

7th day of December, 2016

by its: Manager

HD Rentals LLC

STATE OF MINNESOTA

COUNTY OF Dodge Olmsted

The foregoing instrument was acknowledged before me this 7th day

of December, 2016 by Christopher DeCoppie

by its: Manager

Kathy Scheuch
Notary Public, Dodge County
My Commission Expires Olmsted

In witness whereof, said Olmsted National Bank, a Minnesota Corporation, has

caused these presents to be signed by its proper officers this 7th day of

December, 2016

by: Brad T. Baker

its: President
Officer

STATE OF MINNESOTA

COUNTY OF Dodge Olmsted

The foregoing instrument was acknowledged before me this 7th day of

December, 2016 by Brad T. Becker, its President

and _____, its _____, on behalf of said

Olmsted National Bank, a Minnesota Corporation.

Kathy Scheuch
Notary Public, Dodge County
My Commission Expires Olmsted

CITY OF MANTORVILLE

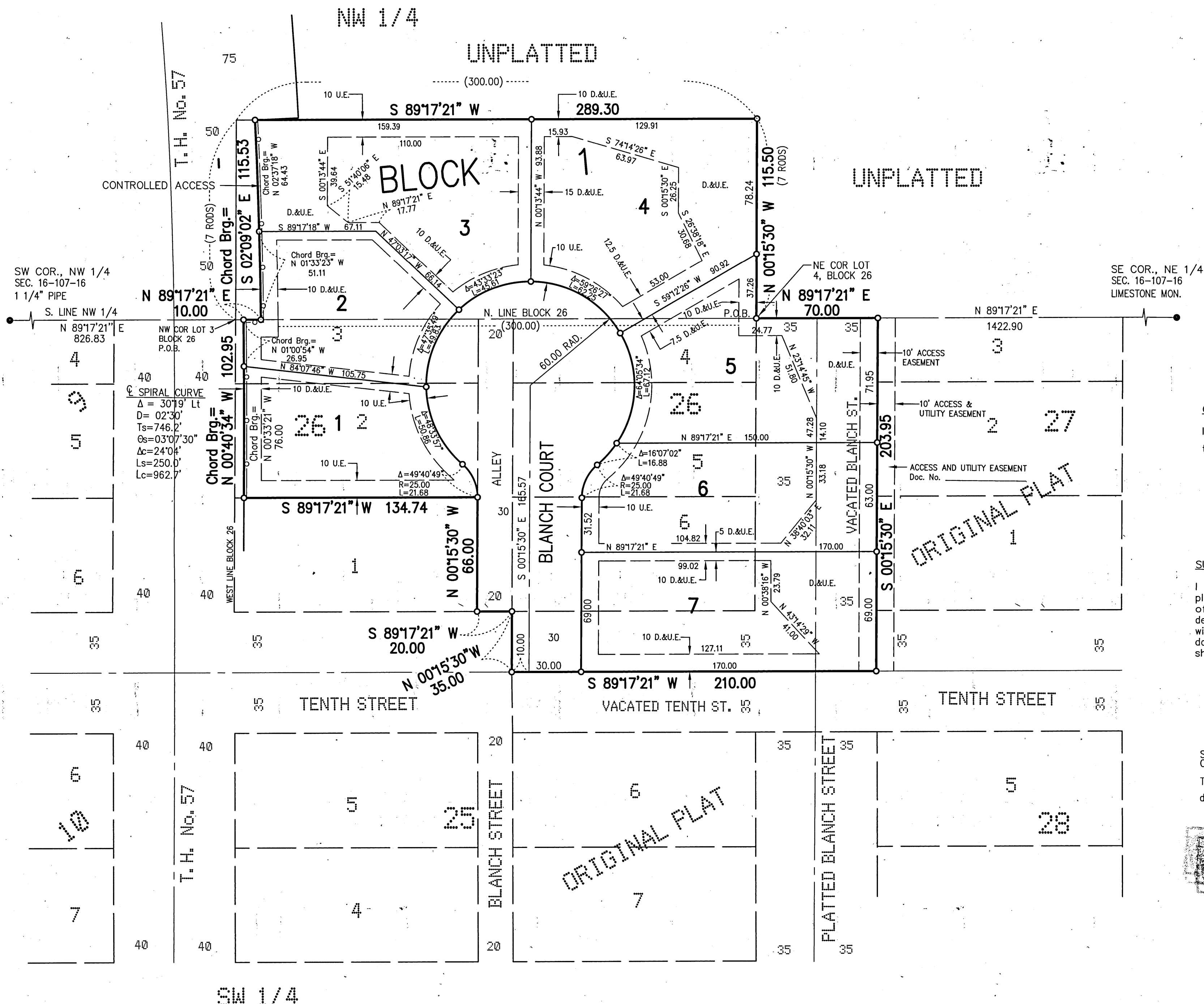
CITY COUNCIL

This plat of MANTOR WOODS WEST SUBDIVISION has been approved by the City

Council of the City of Mantorville, Minnesota, on this 5th day of

December, 2016

Cam Reber, City Administrator



UTILITY EASEMENT DEFINED

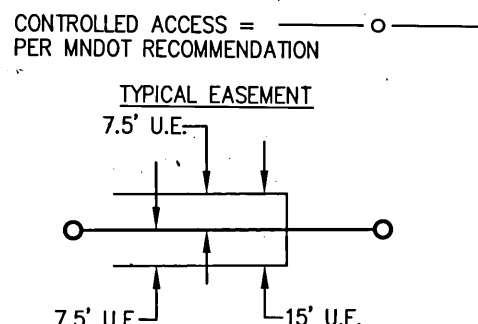
An unobstructed easement for the construction and maintenance of all necessary overhead, underground or surface public utilities, including rights to conduct drainage and trimming on said easement.

DRAINAGE EASEMENT DEFINED

An unobstructed easement for the construction and maintenance of underground and surface drainage facilities and utility easement.

U.E. = UTILITY EASEMENT

D.&U.E. = DRAINAGE AND UTILITY EASEMENT



BASIS OF BEARINGS

All Bearings are in relationship with the Dodge County Coordinate System NAD 1983, Adjusted 1996.

0 20 40 60 80
SCALE IN FEET

MONUMENTS

- FOUND (AS INDICATED)
 - SET (5/8" PIPE UNLESS NOTED OTHERWISE)
- All monuments set have a plastic cap stamped L.S. 41814.
(300.00) = plat or recorded distance.

COUNTY RECORDER

Document Number 219112

I hereby certify that this instrument was filed in the Office of the County

Recorder for record on this 30th day of December, 2016 at

4:15 o'clock P.m. and was duly recorded in Book B of Plats

on page 155

PRC
Dodge County Recorder

COUNTY OF DODGE

AUDITOR/TREASURER

Taxes payable in the year 2016, on real estate herein before described, have been

paid; there are no delinquent taxes and transfer has been entered, on this 30th

day of December, 2016.

S. A. Kramer
Dodge County Auditor/Treasurer

by _____ Deputy

COUNTY SURVEYOR

I certify that pursuant to Chapter 389.09, laws of Minnesota, this plat has been approved

this 30th day of December, 2016.

Lisa M. Hanni
Dodge County Surveyor

SURVEYOR'S CERTIFICATE

I do hereby certify that I have surveyed and platted the property described on this plat as MANTOR WOODS WEST SUBDIVISION; that this plat is a correct representation of the boundary survey; that all mathematical data and labels are correctly designated on the plat; all monuments depicted on the plat have been or will be correctly set within one year as indicated on the plat; that all water boundaries or wet lands as of the date of this certification are shown and labeled on the plat; and that all public ways are shown and labeled on the plat.

Richard J. Massey
Minnesota L.S. No. 41814

STATE OF MINNESOTA

COUNTY OF DODGE

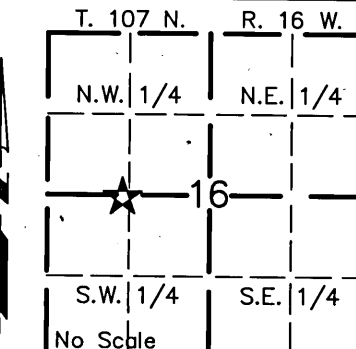
The foregoing Surveyor's Certificate was acknowledged before me this 30th

day of December, 2016, by Richard J. Massey, L.S. No. 41814.

Kathy Scheuch
Notary Public, Dodge County, MN
My Commission Expires Jan 31 2017

Kathy Scheuch
Notary Public, Dodge County, MN
My Commission Expires Jan 31 2017

PROPERTY LOCATION MAP



MASSEY
LAND SURVEYING & ENGINEERING
P.O. BOX 100, KASSON, MN 55944
PH. NO. 507-634-4505, FAX NO. 507-634-6560

