

OFFICIAL PLAT  
ZUMBRO ACRES PRESERVE

Have caused the same to be surveyed and platted as ZUMBRO ACRES PRESERVE and do hereby dedicate to the public for the public use the public way and the drainage and utility easements as created by this plat.

In witness whereof said Roller Rink Properties, a Minnesota limited liability company, has caused these presents to be signed by its proper officer this 11 day of September, 2019

Joel Bigelow  
Joel Bigelow, Managing Partner

STATE OF MINNESOTA  
COUNTY OF Olustee

The foregoing instrument was acknowledged before me this 11 day of September, 2019 by Joel Bigelow, Managing Partner of Roller Rink Properties, LLC, a Minnesota limited liability company, on behalf of the company.

Angela Marie Connolly  
Notary Public, Olustee County, Minnesota

Angela Marie Connolly  
Printed Name

My commission expires: 1-31-2025

In witness whereof said Aaron M. Swarts and Melissa A. Swarts, husband and wife, have hereunto set their hands this 11 day of September, 2019

Aaron M. Swarts  
Aaron M. Swarts

Melissa A. Swarts  
Melissa A. Swarts

STATE OF MINNESOTA  
COUNTY OF Olustee

The foregoing instrument was acknowledged before me this 11 day of September, 2019 by Aaron M. Swarts and Melissa A. Swarts.

Angela Marie Connolly  
Notary Public, Olustee County, Minnesota

Angela Marie Connolly  
Printed Name

My commission expires: 1-31-2025

In witness whereof said Citizens State Bank of Hayfield, a Minnesota corporation, has caused these presents to be signed by its proper officer this 11th day of September, 2019

Curtis Wendland  
Curtis Wendland, Vice President

STATE OF MINNESOTA  
COUNTY OF Olustee

The foregoing instrument was acknowledged before me this 11 day of September, 2019 by Curtis Wendland, Vice President, Citizens State Bank of Hayfield, a Minnesota Corporation.

Angela Marie Connolly  
Notary Public, Olustee County, Minnesota

Angela Marie Connolly  
Printed Name

My commission expires: 1-31-2025

SURVEYOR'S CERTIFICATE

I, Geoffrey G. Griffin, do hereby certify that this plat was prepared by me or under my direct supervision; that I am a duly Licensed Land Surveyor in the State of Minnesota; that this plat is a correct representation of the boundary survey; that all mathematical data and labels are correctly designated on this plat; that all monuments depicted on this plat have been, or will be correctly set within one year; that all water boundaries and wet lands, as defined in Minnesota Statutes, Section 505.01, Subd. 3, as of the date of this certificate are shown and labeled on this plat; and all public ways are shown and labeled on this plat.

Dated this 10 day of SEPTEMBER, 2019

Geoffrey G. Griffin  
Geoffrey G. Griffin, Licensed Land Surveyor  
Minnesota License No. 21940

STATE OF MINNESOTA  
COUNTY OF Olustee

The foregoing Surveyor's Certificate was acknowledged before me this 10 day of September, 2019, by Geoffrey G. Griffin, Minnesota License No. 21940

Andrew Buck  
Notary Public, Olustee County, Minnesota

Printed Name

My commission expires: 01/31/2023

Township Board of Supervisors

The Township Board of Supervisors for Mantorville Township, Dodge County, do hereby certify that we have approved the accompanying plat. In testimony whereof, we have signed our names this 12 day of September, 2019

Dan Burton  
Board Chairperson  
Carol Allen  
Town Clerk

County Auditor/Treasurer

Taxes payable in the year 2019 on the land herein described have been paid; there are no delinquent taxes and has been entered this 20th day of September, 2019

S. A. Dorn  
Dodge County Auditor/Treasurer

County Recorder

County Recorder, County of Dodge, State of Minnesota

I hereby certify that this Plat of ZUMBRO ACRES PRESERVE was filed in this office for record this 20th day of September, 2019 at 3:00 o'clock P.M. and was duly recorded as document number Book 8 of Plats, file number Doc # 230347

Angela Marie Connolly  
County Recorder

County Planning Commission

Approved by the Planning Commission of the County of Dodge, Minnesota, at a regular meeting thereof, on the 19th day of September, 2019

Dan Burton  
Chairman

County Board of Commissioners

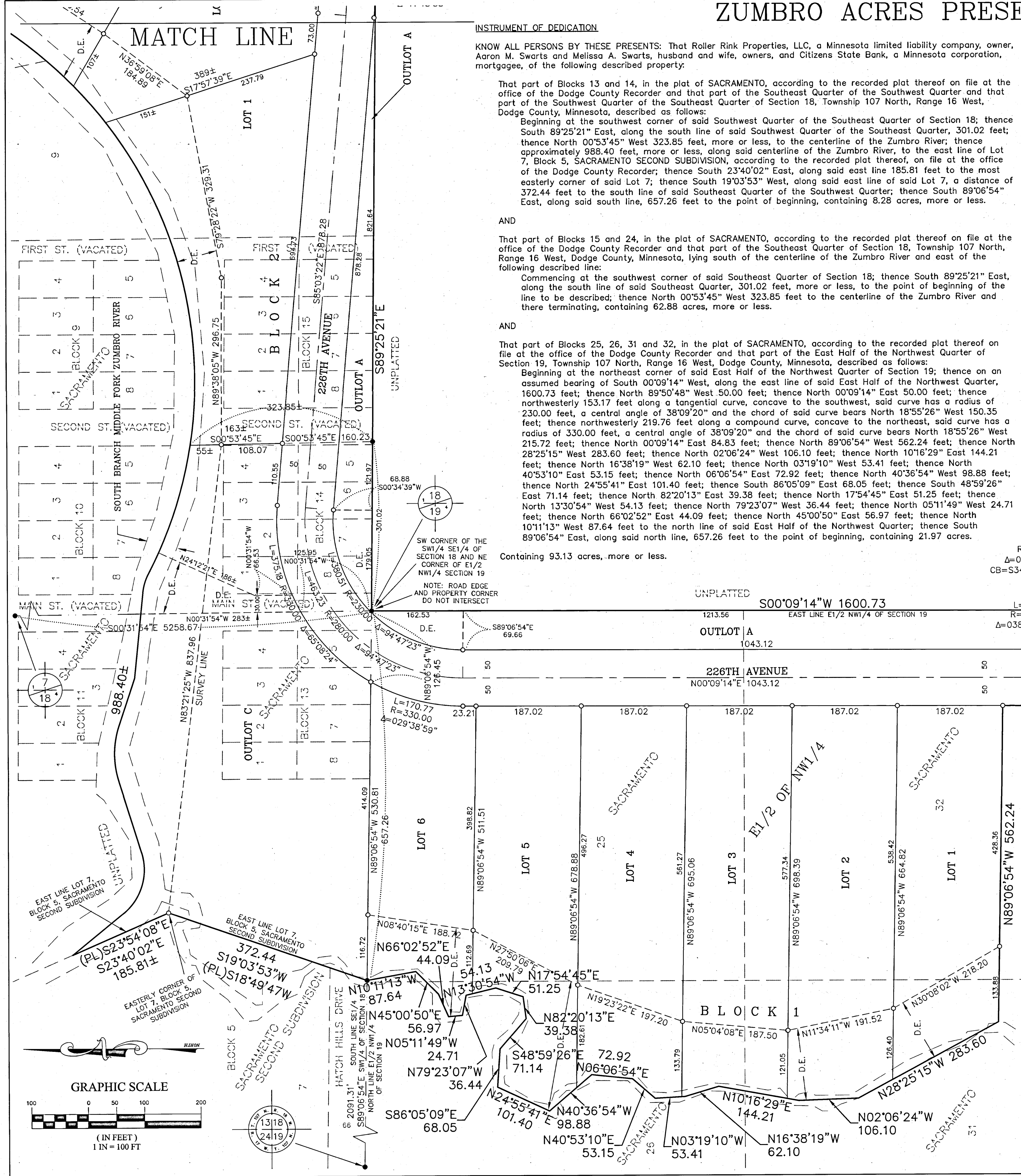
We do hereby certify that on the 18th day of September, 2019, the Board of Commissioners of Dodge County, Minnesota, approved this plat

John Allen  
Chairman  
Rebecky Dubahn  
Attest

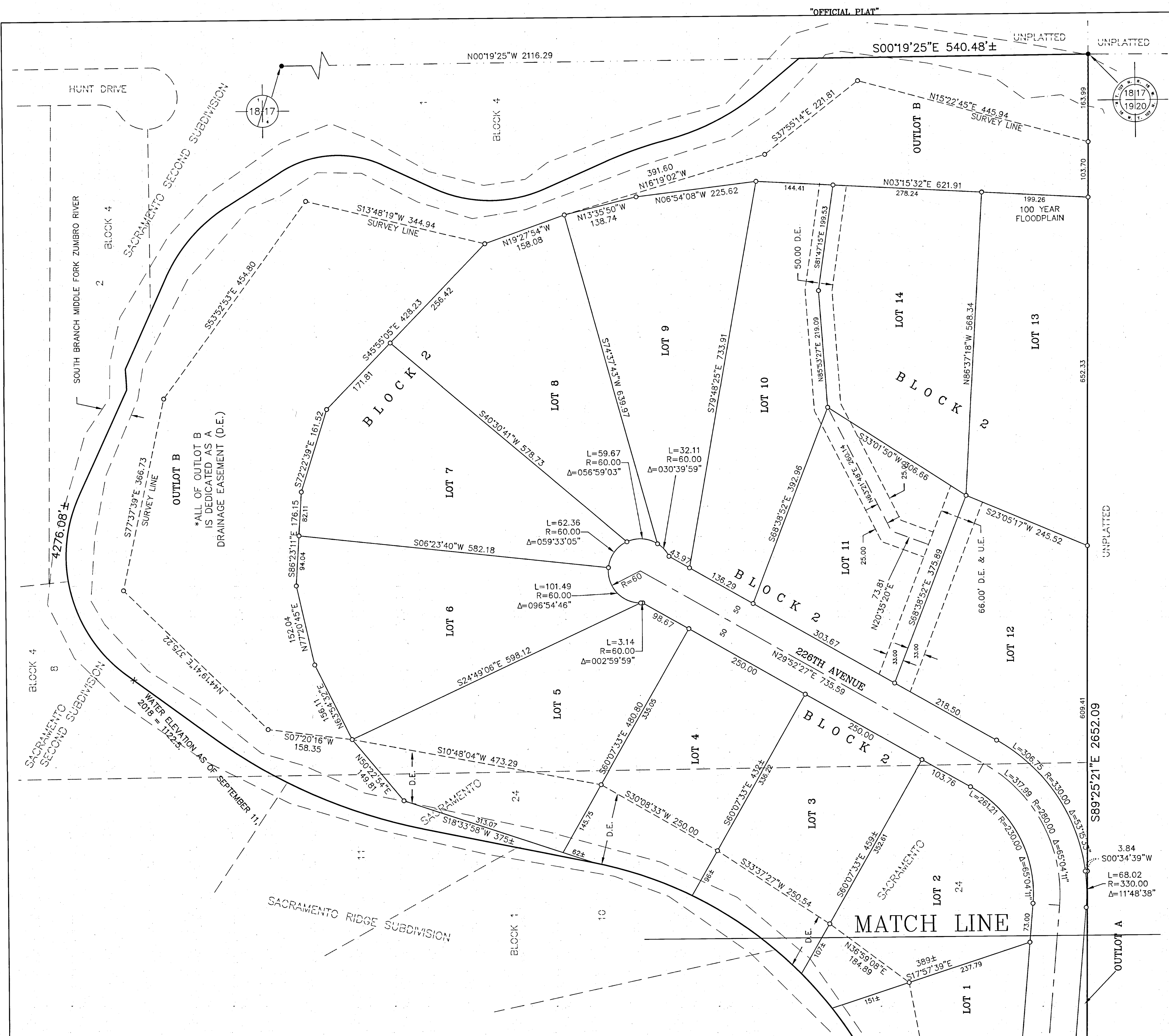
COUNTY SURVEYOR

I hereby certify that in accordance with Minnesota Statutes, Section 505.021, Subd. 11, this plat has been reviewed and approved this 20th day of September, 2019

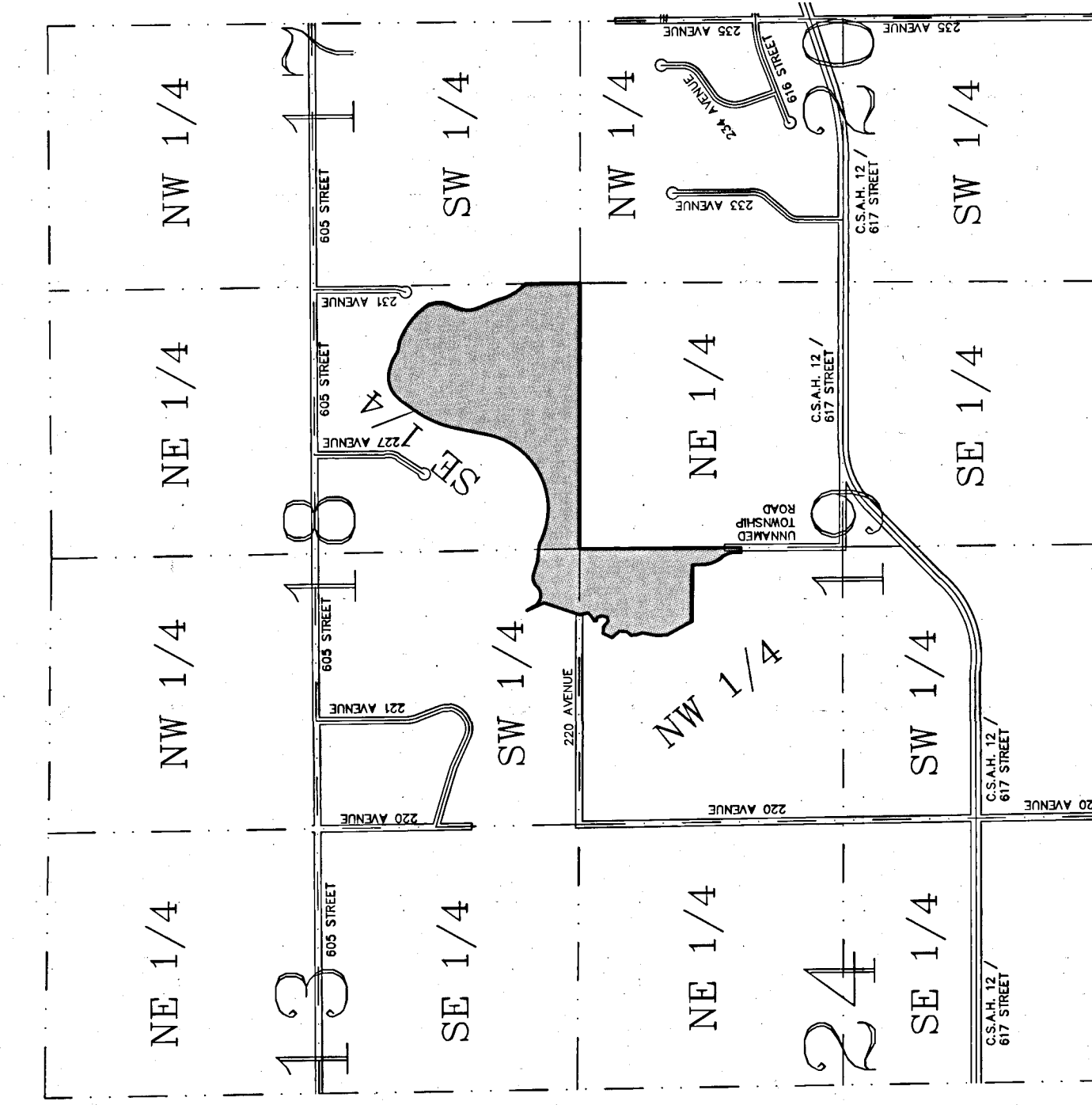
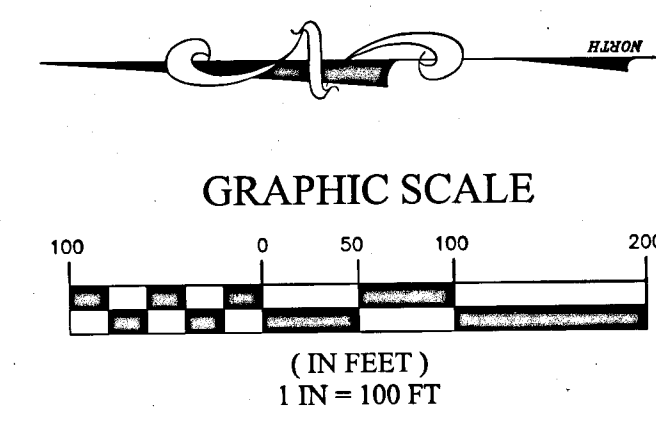
Angela Marie Connolly  
Dodge County Surveyor



ZUMBRO ACRES PRESERVE



- LEGEND**
- SET 1/2 INCH IRON PIPE WITH CAP STAMPED LS 21940
  - FOUND MONUMENTS ARE 1/2 INCH IRON PIPES UNLESS OTHERWISE NOTED
  - D.E. DRAINAGE EASEMENT
  - U.E. UTILITY EASEMENT



**VICINITY MAP**  
T. 107 N., R. 16 W., SEC. 18 & 19  
"NOT TO SCALE"

**BEARINGS**  
ALL BEARINGS ARE BASED ON THE SOUTH LINE OF THE SOUTHEAST QUARTER OF SECTION 18, T. 107 N., R. 16 W., WHICH IS ASSUMED TO BEAR SOUTH 89°25'21" EAST.

**UTILITY EASEMENT DEFINED**  
AN UNOBSTRUCTED EASEMENT FOR THE CONSTRUCTION AND MAINTENANCE OF ALL NECESSARY UNDERGROUND OR SURFACE PUBLIC UTILITIES INCLUDING THE RIGHTS TO CONDUCT DRAINAGE AND TRIMMING ON SAID EASEMENT.

**DRAINAGE EASEMENT DEFINED**  
AN UNOBSTRUCTED EASEMENT FOR THE OPERATION AND MAINTENANCE OF ALL WATERWAYS, BOTH SURFACE AND UNDERGROUND RUNNING, UNDER, AND ACROSS SAID EASEMENT.

BENCHMARK: FOUND MNDOT MARKER "BERGM MN039", LOCATED IN SOUTHWEST QUADRANT OF 5TH STREET EAST AND BERGMAN DRIVE (EAST SIDE OF MANTORVILLE, MN). MONUMENT ELEVATION = 1190.26 (NAVD88)