

VAIL SECOND SUBDIVISION

INSTRUMENT OF DEDICATION

KNOW ALL PERSONS BY THESE PRESENTS: That the City of Kasson, a Minnesota Municipal Corporation, being owner of the following described property situated in the County of Dodge, State of Minnesota, to wit:

Outlot A of Vail Subdivision, according to the recorded plat thereof, Dodge County, MN.

Has caused the same to be surveyed and platted as VAIL SECOND SUBDIVISION and do hereby dedicate to the public for public use the thoroughfares and also dedicate the easements as shown on this plat for drainage and utility purposes.

In witness whereof said CITY OF KASSON, a Minnesota Municipal Corporation, has caused these presents to be signed by its proper officer this 18th day of December, 2023.

By [Signature] its City Clerk

STATE OF MINNESOTA
COUNTY OF DODGE.

The foregoing instrument was acknowledged before me this 13th day of December, 2023, by Chris McKern, the Mayor, CITY OF KASSON, a Minnesota Municipal Corporation.

[Signature]
Notary Public, Dodge County, Minnesota

My Commission Expires 1/31/28

CITY APPROVAL
STATE OF MINNESOTA
COUNTY OF DODGE
CITY OF KASSON

We do hereby certify that on the 25th day of October, 2023, the accompanying plat was duly approved by the Common Council of the City of Kasson, Minnesota. In testimony whereof, we have hereunto signed our names this 13th day of December, 2023.

[Signature]
Mayor

[Signature]
Administrator

CITY OF KASSON PLANNING AND ZONING COMMISSION

Approved by the Planning Commission of the City of Kasson, Minnesota, at a meeting thereof, this 15th day of June, 2022.

[Signature]
Commission Chairperson

COUNTY SURVEYOR

Pursuant to Chapter 389.09, laws of Minnesota, this plat has been approved, this 15th day of December, 2023.

[Signature]
Lisa M. Hanni, Dodge County Surveyor

DODGE COUNTY AUDITOR/TREASURER

Taxes payable in the year 2023 on the land herein described, have been paid; there are no delinquent taxes and transfer has been entered on this 19th day of December, 2023.

[Signature]
Dodge County Auditor/Treasurer

DODGE COUNTY RECORDER

Document Number 250487

I hereby certify that this instrument was filed in the Office of the County Recorder for record on this 19th day of December, 2023, at 1:00 o'clock p. m. and was duly recorded in Book B of Plats on page 196.

[Signature]
Dodge County Recorder

SURVEYOR'S CERTIFICATE

I hereby certify that I have surveyed and platted the property described on this plat as VAIL SECOND SUBDIVISION; that this plat is a correct representation of the boundary survey; that all mathematical data and labels are correctly designated on the plat; that all monuments depicted on the plat have or will be correctly set within one year as indicated on the plat; that all water boundaries and wet lands as defined in MS 505.01, Subd. 3, existing as of the date of this certification are shown and labeled on the plat; and that all public ways are shown and labeled on the plat.

Dated this 11th day of December, 2023.

[Signature]
Timothy A. Hruska, Land Surveyor
Minnesota License No. 44930

STATE OF MINNESOTA
COUNTY OF OLMSTED.

The foregoing Surveyor's Certificate was acknowledged before me this 11th day of December, 2023 by Timothy A. Hruska, Minnesota License No. 44930.

[Signature]
Notary Public, Olmsted County, Minnesota

My Commission Expires 1/31/2028

VAIL SECOND SUBDIVISION

LEGEND

- - FOUND 1/2" IRON PIPE WITH CAP #44930 UNLESS OTHERWISE NOTED
- - DENOTES SET 1/2" IRON PIPE WITH CAP #44930
- (X) RECORD DIMENSION
- EASEMENT
- CENTERLINE
- RIGHT-OF-WAY
- EXISTING BOUNDARY

UTILITY EASEMENT DEFINED

An unobstructed easement for the construction and maintenance of all necessary overhead, underground, or surface public utilities, including rights to conduct drainage and trimming on said easement.

U.E. = UTILITY EASEMENT

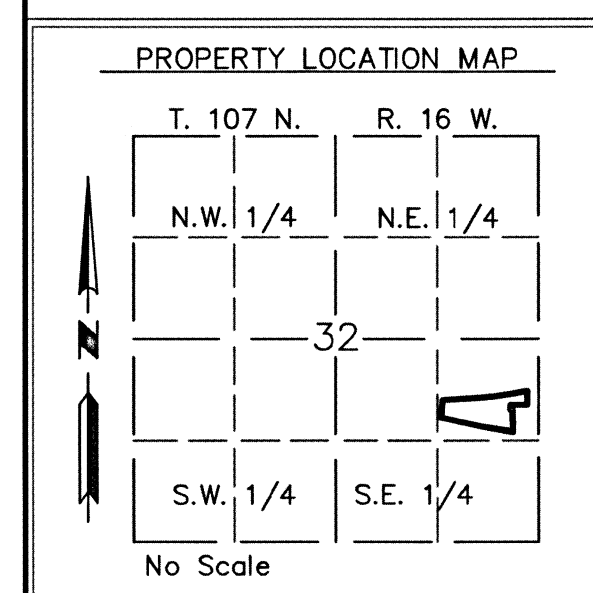
DRAINAGE EASEMENT DEFINED

An unobstructed easement for the construction and maintenance of underground and surface drainage and trimming on said easement.

D.E. = DRAINAGE EASEMENT

BEARING SYSTEM USED:

ALL BEARINGS ARE IN RELATIONSHIP WITH THE DODGE COUNTY COORDINATE SYSTEM (NAD 83, ADJUSTED 1996) WITH THE EAST LINE OF THE SE 1/4 HAVING A BEARING OF S00°07'14"E.



CURVE TABLE					
SEGMENT	CURVE LENGTH	RADIUS	DELTA	CHORD LENGTH	CHORD BEARING
C1	71.82	67.67	60°48'47"	68.50	N59°47'58"W
C2	124.51	67.67	105°25'20"	107.68	N82°06'15"W
C3	145.44	67.67	123°08'35"	119.02	S16°23'13"E
C4	14.47	67.67	12°14'52"	14.44	S84°04'56"E
C5	55.86	67.67	47°17'42"	54.29	S54°18'39"E