

PLAT OF
BLAINE'S THIRD SUBDIVISION
KASSON, MINNESOTA

DEDICATION:

KNOW ALL MEN BY THESE PRESENTS: that Clark Blaine and Virginia Blaine, his wife, owners and proprietors of the following described property situated in the City of Kasson, County of Dodge, State of Minnesota, to-wit:

That part of the Southeast Quarter of the Northeast Quarter of Section 32, Township 107 North, Range 16 West of the Fifth Principal Meridian, described by metes and bounds as follows:

Beginning at the southeast corner of said Northeast Quarter; thence on an assumed bearing of North 89°21'21" West, along the south line of said Northeast Quarter, a distance of 528.00 feet; thence due North, a distance of 328.14 feet; thence South 89°21'21" East, a distance of 528.00 feet to a point in the east line of said Northeast Quarter; thence due South, along the east line of said Northeast Quarter, a distance of 328.14 feet to the point of beginning.

have caused the same to be surveyed and platted as BLAINE'S THIRD SUBDIVISION, City of Kasson, Minnesota, and do hereby donate and dedicate to the public, for public use forever, the street as shown on the plat, and grant the easements defined thereon. In witness whereof we have hereunto set our hands and seal this

5th day of August, 1976 A.D.

Clark Blaine
Clark Blaine

Virginia Blaine
Virginia Blaine

State of Minnesota ss
County of Dodge

On this 5th day of August, 1976 A.D. before me, a Notary Public, within and for said county and state personally appeared Clark Blaine and Virginia Blaine, his wife, to me personally known, to be the persons described in and who executed the foregoing instrument and they affirm and acknowledge that they executed the same as their own free act and deed.

R. E. Randall
Notary Public, Dodge County, Minnesota
My Commission expires April 15, 1979

Surveyor's Certificate

State of Minnesota ss
County of Olmsted

I do hereby certify that I have surveyed and platted the property described on this plat as BLAINE'S THIRD SUBDIVISION, City of Kasson, County of Dodge, Minnesota, that this plat is a correct representation of said survey; that all distances are correctly shown on said plat in feet and decimals of a foot; that all monuments have been correctly placed on the ground as shown on the plat; that the outside boundary lines are correctly designated on the plat; and that there are no wet lands or public highways to be designated on said plat other than as shown thereon.

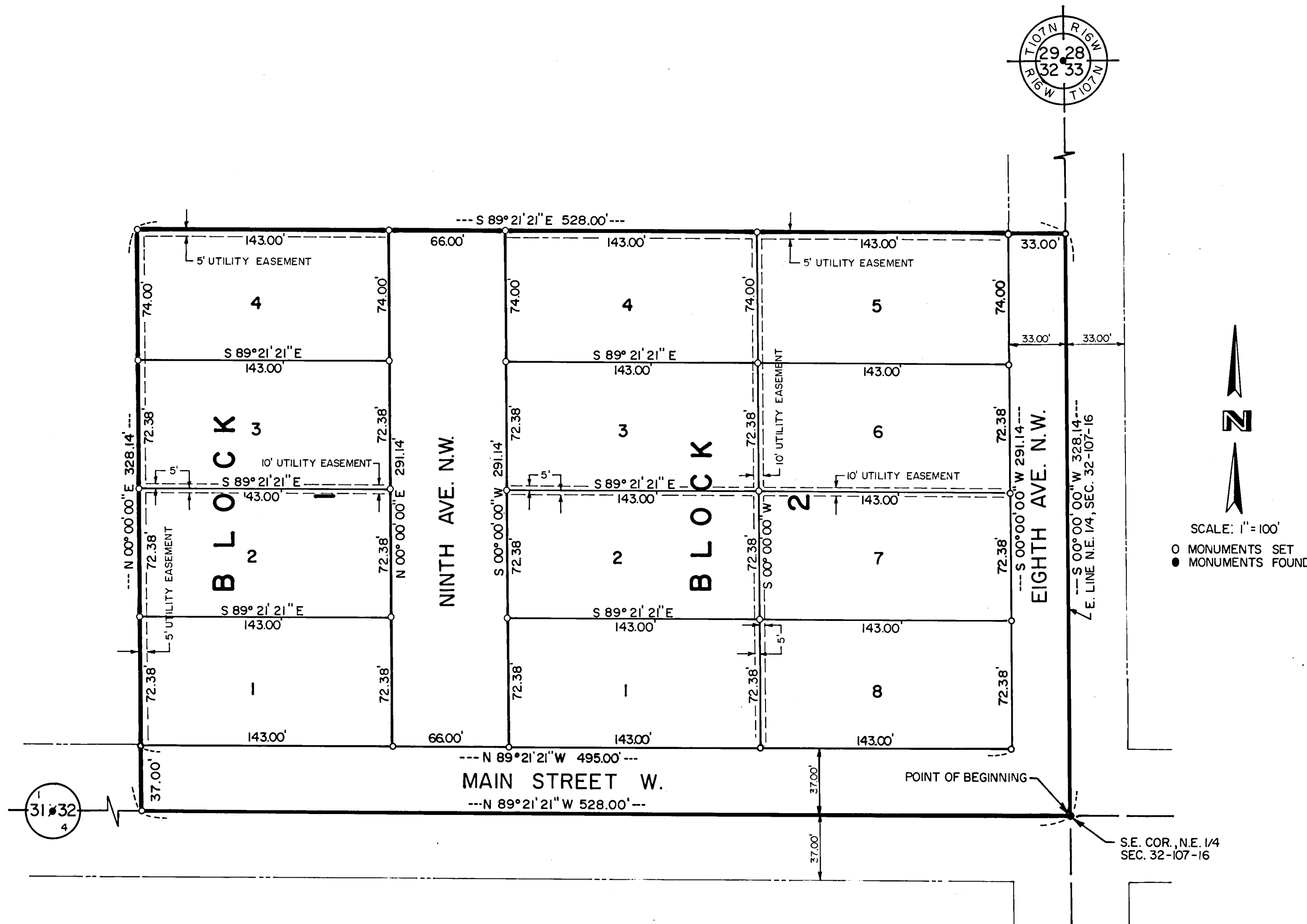
Richard F. Kastle
Surveyor
Minn. Registration No. 6405

State of Minnesota ss
County of Olmsted

The above Surveyor's Certificate was subscribed and sworn to before me, a Notary Public within and for said county and state on this 30th day of July, 1976 A.D.

Vernon E. Volstad
NOTARY PUBLIC - MINNESOTA
OLMSTED COUNTY
My Commission Expires Sep. 27, 1978

Vernon E. Volstad
Notary Public, Olmsted County, Minnesota
My Commission expires SEPT. 27, 1978



UTILITY EASEMENTS DEFINED

An unobstructed easement for the construction and maintenance of all necessary overhead, underground or surface, public and private utilities including rights to conduct drainage and trimming on said easement.

State of Minnesota
County of Dodge ss
City of Kasson

I, Shirley Wenz, City Clerk in and for the City of Kasson, do hereby certify that on the 16 day of August, 1976 A.D., the accompanying plat was duly approved by the common council of the City of Kasson, in testimony thereof I have hereunto signed my name and affixed the seal of said City of Kasson this 16 day of August, 1976 A.D.

Shirley Wenz
City Clerk

State of Minnesota ss
County of Dodge

Filed for record this 17 day of August, 1976 A.D. at 11 O'clock P.M. in Book 39 of Plats on page 39.

Wayne C. Rothhoff
Register of Deeds

No delinquent taxes and transfer entered.

Richard N. Walton
County Auditor