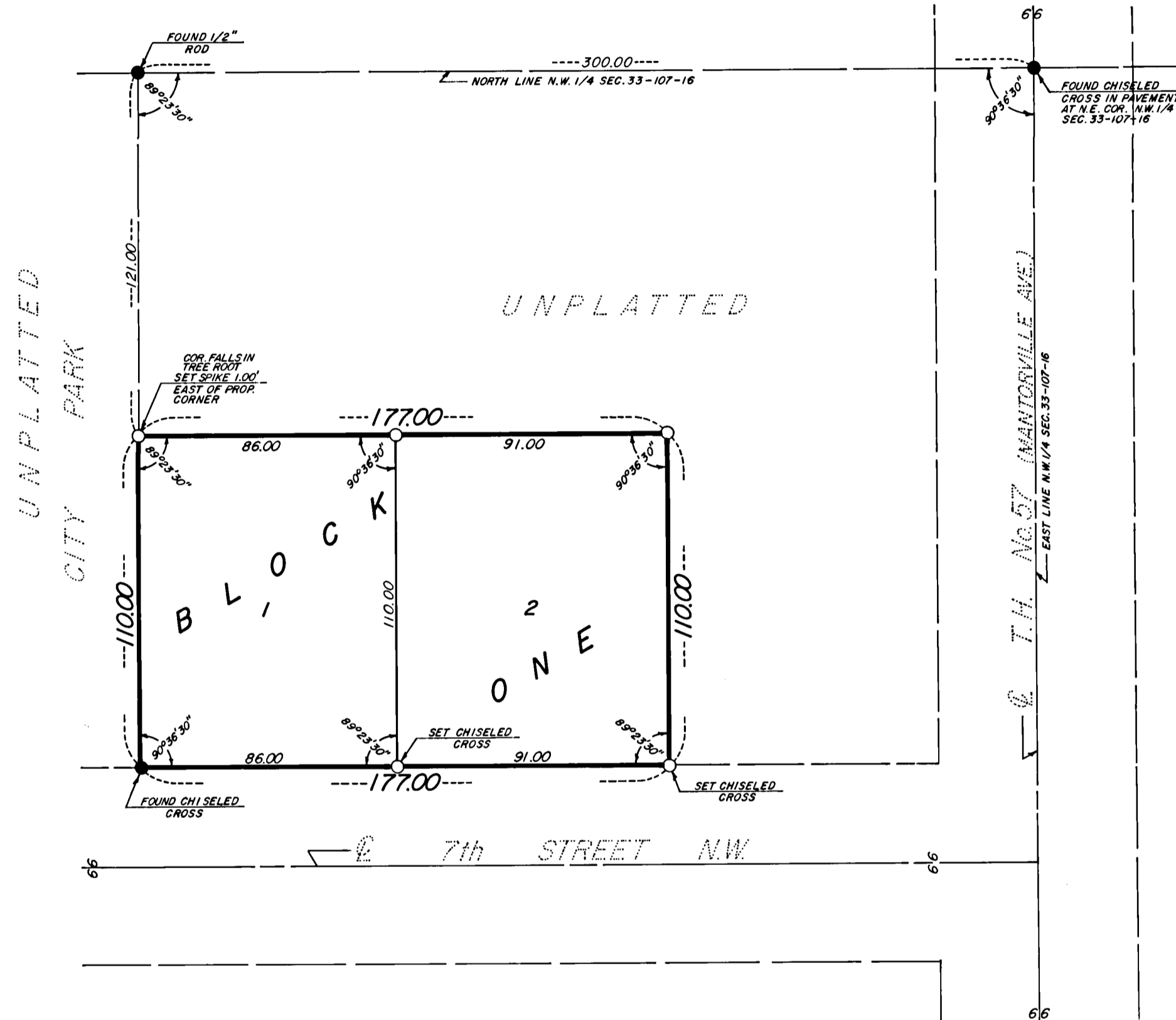


PARK PLACE SUBDIVISION

KASSON, MINNESOTA

NOTE:
ALL MONUMENTS SHOWN THIS:
ARE 5/8" I.D. CAPPED PIPES SET
WITH REGISTRATION NO. 11622.
UNLESS OTHERWISE NOTED.

SCALE: 1 INCH = 40 FEET



I hereby certify that I have surveyed and platted the property described on this plat as PARK PLACE SUBDIVISION; that this is a correct representation of the survey; that all distances are correctly shown on the plat; that all monuments have been correctly placed in the ground as shown; that the outside boundary lines are correctly designated on the plat; and that there are no wet lands or public highways to be designated on said plat other than as shown thereon.

James E. Swanson
James E. Swanson, R.L.S.
Minnesota Registration Number 11622

State of Minnesota
County of Olmsted

The surveyor's certificate was subscribed and sworn to before me, a Notary Public, this 31st day of March, 1978.

Howard E. Hunt
Howard E. Hunt
Notary Public, Olmsted County, Minn.
My Commission Expires Dec. 9, 1978
Notary Public, Olmsted County, Minnesota

Filed for record this 25th day of April, 1978 at 3:00 o'clock P.m.
in book A of plats, on page 162 as instrument number 425.

Carole J. Burton
County Recorder, Dodge County, Minnesota

No delinquent taxes due and transfer entered this 25th day of APRIL, 1978.

Richard N. Walton
County Auditor

State of Minnesota
County of Dodge
City of Kasson

We, Harold Strand, Mayor, and Shirley Wenz, Clerk-Treasurer, in and for the City of Kasson, do hereby certify that on the 3rd day of April, 1978A.D., the accompanying plat was duly approved by the Common Council of the City of Kasson. In testimony thereof I have hereunto signed my name and affixed the seal of said City of Kasson this 21 day of April, 1978.

Harold Strand
Harold Strand, Mayor

Shirley Wenz
Shirley Wenz, Clerk-Treasurer

Owner's Dedication:

KNOW ALL MEN BY THESE PRESENTS: that J.J. Renroc, Incorporated, a Minnesota corporation, owner and proprietor, and Kasson State Bank of Kasson, a Minnesota corporation, mortgagee of the following described property situated in the City of Kasson, State of Minnesota to wit:

A part of the Northeast Quarter of the Northwest Quarter of Section 33, Township 107 North, Range 16 West, described as follows:

Commencing at the Northeast corner of said Northwest Quarter; thence westerly along the north line of said Northwest Quarter, 300.00 feet; thence southerly, parallel with the east line of said Northwest Quarter, at a deflection angle of 90 degrees 36 minutes 30 seconds to the left, 121.00 feet for a point of beginning; thence easterly, parallel with the north line of said Northwest Quarter, at a deflection angle of 89 degrees 23 minutes 30 seconds to the left, 177.00 feet; thence northerly, at a deflection angle of 90 degrees 36 minutes 30 seconds to the left, 110.00 feet; thence westerly, at a deflection angle of 89 degrees 23 minutes 30 seconds to the left, 177.00 feet to the point of beginning.

Containing 0.45 acres.

Have caused the same to be surveyed and platted as PARK PLACE SUBDIVISION. In witness whereof said J.J. Renroc, Incorporated has caused these presents to be signed by its proper officers and its corporate seal to be hereunto affixed this 21st day of April, 1978. In witness whereof said Kasson State Bank of Kasson has caused these presents to be signed by its proper officers and its corporate seal to be hereunto affixed this 21st day of April, 1978.

J.J. Renroc, Incorporated

Kasson State Bank

Gerald L. Dallmann
Gerald L. Dallmann, President

Curtis Lenz
Curtis Lenz, Cashier

Gerald E. Snow
Gerald E. Snow, Secretary-Treasurer

C. E. Palmer
C. E. Palmer, President

State of Minnesota
County of Dodge

The foregoing instrument was acknowledged before me this 21st day of April, 1978, by Gerald L. Dallmann its President and Gerald E. Snow its Secretary-Treasurer officers of J.J. Renroc, Incorporated on behalf of the corporation

Nancy E. Woodall
Notary Public, Dodge County, Minnesota

My commission expires 5-1-80

State of Minnesota
County of Dodge

The foregoing instrument was acknowledged before me this 21st day of April, 1978, by Curtis Lenz, its Cashier and C. E. Palmer its President officers of Kasson State Bank of Kasson on behalf of the corporation.

O. E. Grovdahl
Notary Public Dodge County, Minnesota

My commission expires Apr. 15, 1979

OFFICIAL PLAT

PREPARED BY:
McGHEE & BETTS, INC.
CONSULTING ENGINEER'S
ROCHESTER, MINNESOTA

PARK PLACE SUBDIVISION