

# BUCK'S ADDITION

## HAYFIELD, MINNESOTA

I hereby certify that I have surveyed and platted the property described on this plat as BUCK'S ADDITION; that this is a correct representation of the survey; that all distances are correctly shown on the plat; that all monuments have been correctly placed in the ground as shown; that the outside boundary lines are correctly designated on the plat; and that there are no wet lands or public highways to be designated on said plat other than as shown thereon.

James E. Swanson  
James E. Swanson, R.L.S.  
Minnesota Registration No. 11622

State of Minnesota  
County of Olmsted

The surveyor's certificate was subscribed and sworn to before me, a Notary Public, this 20<sup>th</sup> day of April, 1978.

Howard E. Hunt  
Notary Public, Olmsted County, Minn.  
My commission expires Dec. 9, 1978

Filed for record this 10<sup>th</sup> day of May, 1978 at 4:30 o'clock  
P.m. in book A of plats, on page 164, as Instrument  
number 16723.

Carole J. Burton  
County Recorder, Dodge County, Minnesota

No delinquent taxes due and transfer entered this 10<sup>th</sup> day of MAY, 1978.

Richard N. Halton  
County Auditor

State of Minnesota  
County of Dodge  
City of Hayfield

We, Alvin Maves, Mayor, and Joe Ruzek, Clerk-Treasurer, in and for the City of Hayfield, do hereby certify that on the 20<sup>th</sup> day of May, 1978 A.D., the accompanying plat was duly approved by the Common Council of the City of Hayfield. In testimony thereof I have hereunto signed my name and affixed the seal of said City of Hayfield this 20<sup>th</sup> day of MAY, 1978 A.D.

Alvin Maves  
Alvin Maves, Mayor

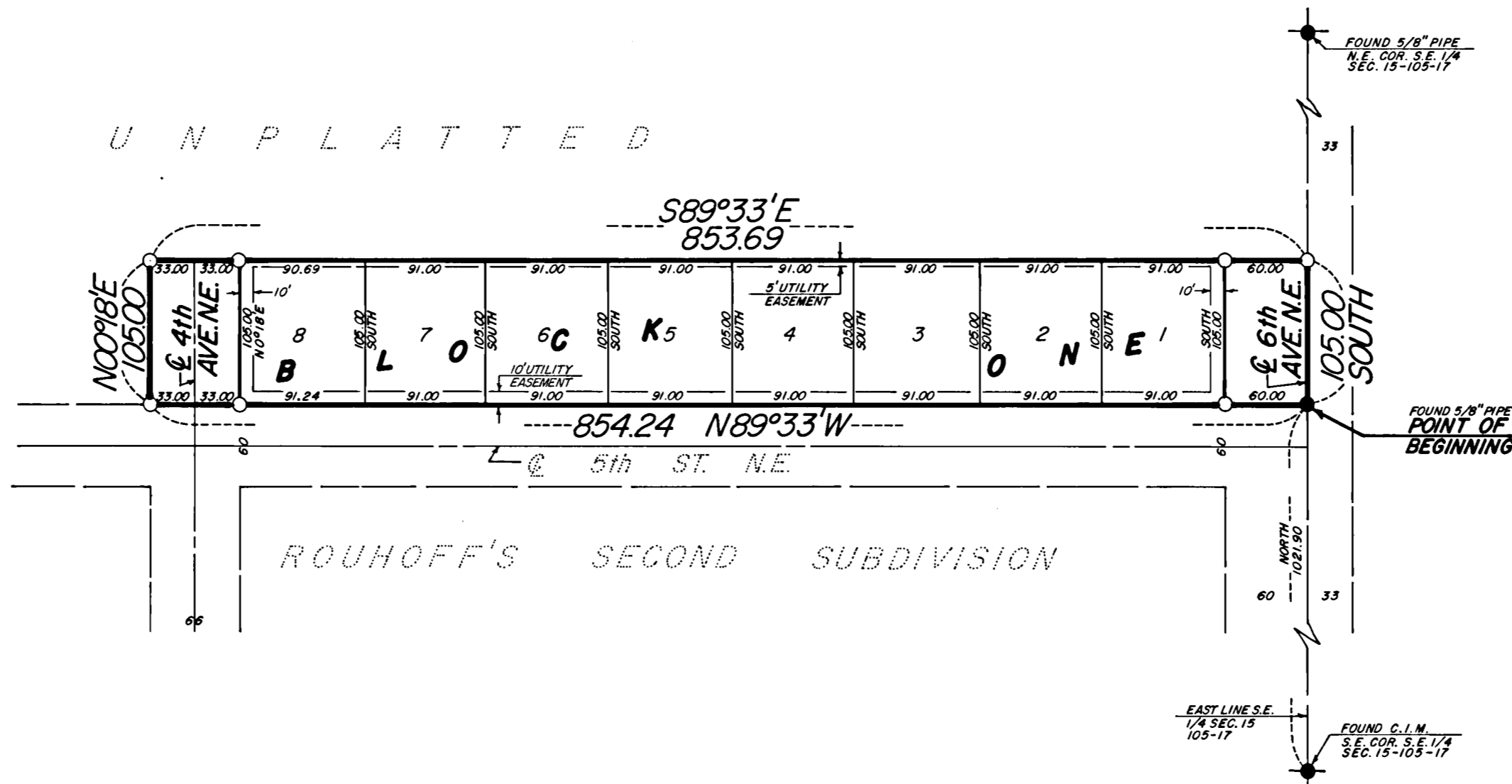
Joseph Ruzek  
Joe Ruzek, Clerk-Treasurer

**Utility Easement Defined:**

An unobstructed easement for the construction and maintenance of all necessary overhead, underground, or surface public utilities including rights to conduct drainage and trimming on said easement.

NOTE:  
ALL MONUMENTS SHOWN THIS: ○  
ARE 5/8" I.D. CAPPED PIPES SET  
WITH REGISTRATION NO. 11622.  
UNLESS OTHERWISE NOTED.  
THE EAST LINE OF SEC. 15-107-17  
IS ASSUMED DUE NORTH.

SCALE: 1 INCH = 100 FEET



**Owner's Dedication:**

KNOW ALL MEN BY THESE PRESENTS: That F&M Broiler, Inc., a Minnesota corporation and Citizen State Bank of Hayfield, mortgagee, and Maynard Rouhoff and Dorothy Rouhoff, husband and wife, owners and proprietors of the following described property situated in the City of Hayfield, State of Minnesota, to wit:

A part of the Southeast Quarter of Section 15, Township 105 North, Range 17 West, Hayfield, Minnesota, described as follows:

Commencing at the southeast corner of said Southeast Quarter; thence due north, assumed bearing, along the east line of said Southeast Quarter, 1021.90 feet to the northeast corner of Rouhoff's Second Subdivision for a point of beginning; thence north 89 degrees 33 minutes west along the north line of said Subdivision, 854.24 feet; thence north 00 degrees 18 minutes east, 105.00 feet; thence south 89 degrees 33 minutes east, 853.69 feet to the east line of said Southeast Quarter; thence due south along said east line 105.00 feet to the point of beginning.

Containing 2.06 acres.

Have caused the same to be surveyed and platted as BUCK'S ADDITION and do hereby donate and dedicate to the public, for the public use forever the Avenues and grant the easements as shown on this plat. In witness whereof said F&M Broiler, Inc., a Minnesota corporation has caused these presents to be signed by its proper officers this 4<sup>th</sup> day of May, 1978. In witness whereof said Maynard Rouhoff and Dorothy Rouhoff, husband and wife, have caused these presents to be signed this 4<sup>th</sup> day of May, 1978. In witness whereof said Citizen State Bank of Hayfield has caused these presents to be signed by its proper officers this 4<sup>th</sup> day of May, 1978.

F&M Broiler, Inc.

Francis Buck  
Francis Buck, President

Maynard Rouhoff  
Maynard Rouhoff, Secretary-Treasurer

Maynard Rouhoff  
Maynard Rouhoff

Dorothy Rouhoff  
Dorothy Rouhoff

Citizen State Bank of Hayfield

Earl Himle  
Earl Himle, President

James Jorstad  
James Jorstad, Manager

State of Minnesota  
County of Dodge

The foregoing instrument was acknowledged before me this 4<sup>th</sup> day of May, 1978, by Francis Buck, President and Maynard Rouhoff, Secretary-Treasurer officers of F&M Broiler, Inc. on behalf of the corporation.

David H. Samuelson  
Notary Public, Dodge County, Minnesota

My commission expires August 18, 1978

State of Minnesota  
County of Dodge

The foregoing instrument was acknowledged before me this 4<sup>th</sup> day of May, 1978 by Maynard Rouhoff and Dorothy Rouhoff, husband and wife.

David H. Samuelson  
Notary Public, Dodge County, Minnesota

My commission expires August 18, 1978

State of Minnesota  
County of Dodge

The foregoing instrument was acknowledged before me this 4<sup>th</sup> day of May, 1978 by Earl Himle, President and James Jorstad, Manager, officers of Citizen State Bank of Hayfield on behalf of the corporation.

David H. Samuelson  
Notary Public, Dodge County, Minnesota

My commission expires August 18, 1978

PREPARED BY:  
McGHEE & BETTS, INC.  
CONSULTING ENGINEERS  
ROCHESTER, MINNESOTA

OFFICIAL PLAT

BUCK'S ADDITION