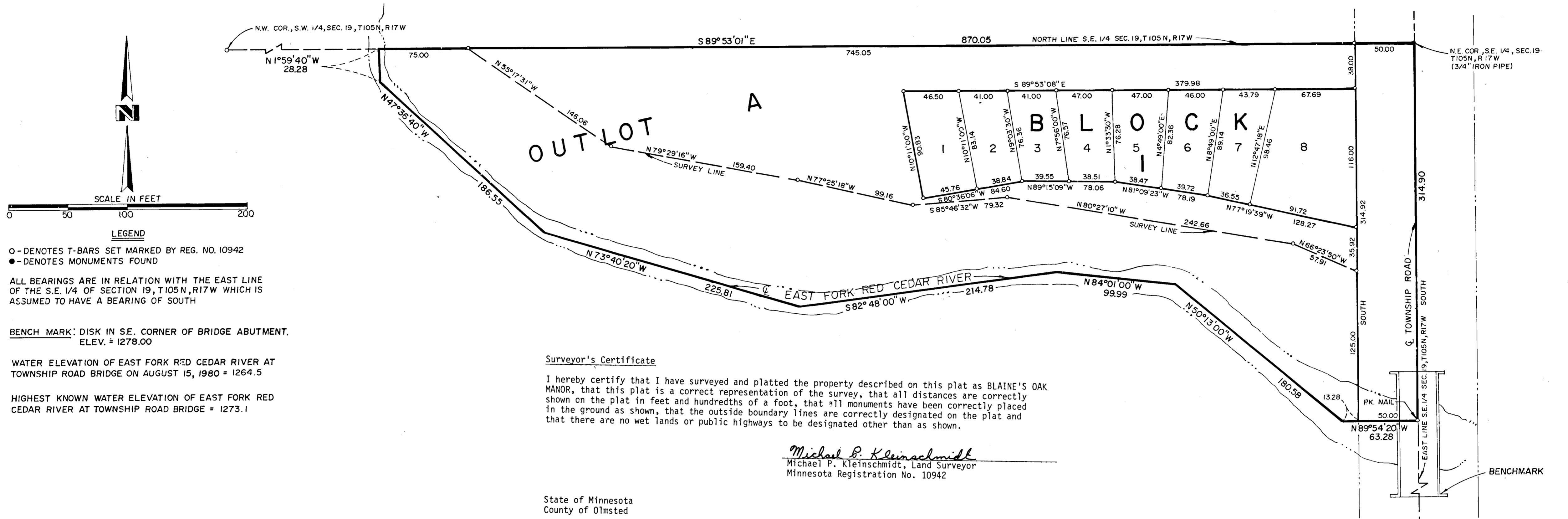


OFFICIAL PLAT

BLAINE'S OAK MANOR



LEGEND
 ○ - DENOTES T-BARS SET MARKED BY REG. NO. 10942
 ● - DENOTES MONUMENTS FOUND

ALL BEARINGS ARE IN RELATION WITH THE EAST LINE OF THE S.E. 1/4 OF SECTION 19, T105N, R17W WHICH IS ASSUMED TO HAVE A BEARING OF SOUTH

BENCH MARK: DISK IN S.E. CORNER OF BRIDGE ABUTMENT. ELEV. = 1278.00

WATER ELEVATION OF EAST FORK RED CEDAR RIVER AT TOWNSHIP ROAD BRIDGE ON AUGUST 15, 1980 = 1264.5

HIGHEST KNOWN WATER ELEVATION OF EAST FORK RED CEDAR RIVER AT TOWNSHIP ROAD BRIDGE = 1273.1

Surveyor's Certificate

I hereby certify that I have surveyed and platted the property described on this plat as BLAINE'S OAK MANOR, that this plat is a correct representation of the survey, that all distances are correctly shown on the plat in feet and hundredths of a foot, that all monuments have been correctly placed in the ground as shown, that the outside boundary lines are correctly designated on the plat and that there are no wet lands or public highways to be designated other than as shown.

Michael P. Kleinschmidt
 Michael P. Kleinschmidt, Land Surveyor
 Minnesota Registration No. 10942

State of Minnesota
 County of Olmsted

The foregoing Surveyor's Certificate was acknowledged before me this 25th day of September, 1980, by Michael P. Kleinschmidt, Minnesota Registration No. 10942.

Donovan L. Boell
 Notary Public, Olmsted County Minnesota
 My Commission Expires April 1, 1981

Township Board of Supervisors

We do hereby certify that on the 2nd day of October, 1980, the Board of Supervisors for Hayfield Township, Dodge County, Minnesota, approved this plat.

Maxine Stanton, Chairman

Board of County Commissioners

We do hereby certify that on the 7th day of October, 1980, the Board of Commissioners of Dodge County, Minnesota, approved this plat.

Attest: *Lawrence L. Irons*, Chairman
Richard N. Haltaw, Auditor

County Surveyor

This plat has been checked and approved this 3rd day of OCTOBER, 1980.

Ron Murphy
 Ron Murphy
 Dodge County Surveyor

County Auditor Tax Statement

No delinquent taxes due and transfer entered this 7th day of OCTOBER, 1980.

Richard N. Haltaw
 Dodge County Auditor

County Recorder

Document Number 51874

I hereby certify that this instrument was filed in the office of the County Recorder for record on this 7th day of October, 1980, at 4 O'Clock P.M., and was duly recorded in Book A of Plats on Page 186.

Carole J. Burton
 County Recorder
 Dodge County, Minnesota

DEDICATION

KNOW ALL MEN BY THESE PRESENTS: That Blaines Inc., a Minnesota Corporation, owner and proprietor of the following described property situated in the County of Dodge, State of Minnesota, to-wit:

That part of the Southeast Quarter of Section 19, Township 105 North, Range 17 West of the Fifth Principal Meridian, Dodge County, Minnesota, lying north of the centerline of the East Fork of the Red Cedar River described as follows:

Beginning at the northeast corner of said Southeast Quarter; thence on an assumed bearing of South along the east line of said Southeast Quarter, a distance of 314.90 feet to the centerline of the East Fork of the Red Cedar River; thence North 89°54'20" West along said centerline a distance of 63.28 feet; thence North 50°13'00" West along said centerline a distance of 180.58 feet; thence North 84°01'00" West along said centerline a distance of 99.99 feet; thence South 82°48'00" West along said centerline a distance of 214.78 feet; thence North 73°40'20" West along said centerline a distance of 225.81 feet; thence North 47°36'40" West along said centerline a distance of 186.55 feet; thence North 1°59'40" West along said centerline a distance of 28.28 feet to the north line of said Southeast Quarter; thence South 89°53' 01" East along said north line a distance of 870.05 feet to the point of beginning containing 3.92 acres more or less.

has caused the same to be surveyed and platted as BLAINE'S OAK MANOR and does hereby donate and dedicate to the public for public use forever the Township Road as shown on this plat.

In witness whereof said Blaines Inc. has caused its presents to be signed by its proper officers on this 26 day of September, 1980.

BLAINES INC.
 SIGNED By *Clark J. Blaine*
 Clark J. Blaine, President

SIGNED By *Carter D. Blaine*
 Carter D. Blaine, Vice President

State of Minnesota
 County of Dodge

The foregoing instrument was acknowledged before me this 26 day of September, 1980 by Clark J. Blaine, President and Carter D. Blaine, Vice President, of Blaines Inc., a Minnesota Corporation, on behalf of the corporation.

Kathleen S. Blaine
 KATHLEEN S. BLAINE
 NOTARY PUBLIC - MINNESOTA
 DODGE COUNTY
 MY COMMISSION EXPIRES MAR. 17, 1984

Kathleen S. Blaine
 Kathleen S. Blaine
 Notary Public, Dodge County, Minnesota
 My Commission expires March 17, 1984

PREPARED BY
 WALLACE HOLLAND KASTLER SCHMITZ & CO.
 CONSULTING ENGINEERS AND PLANNERS
 ROCHESTER, MINNESOTA