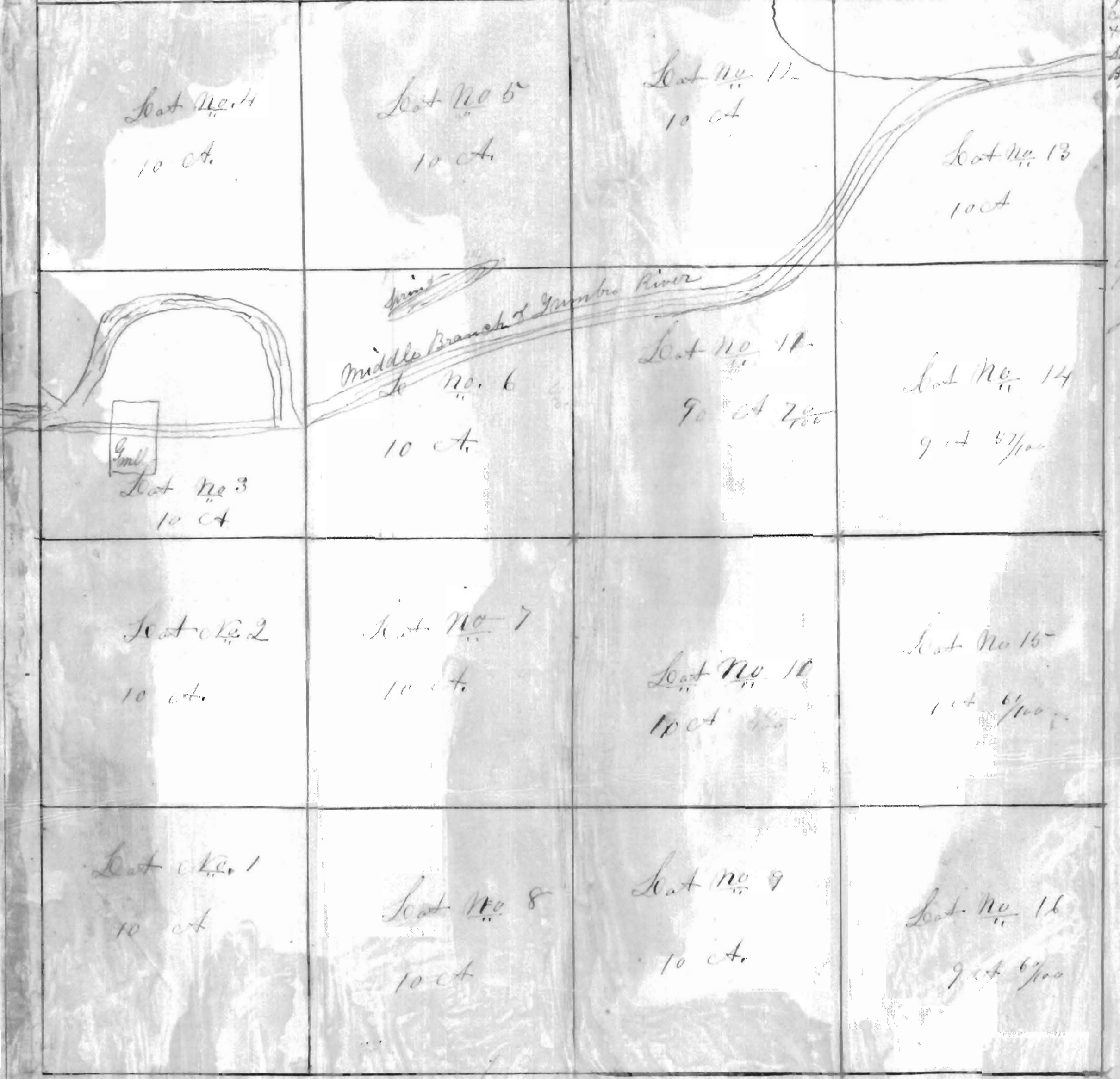
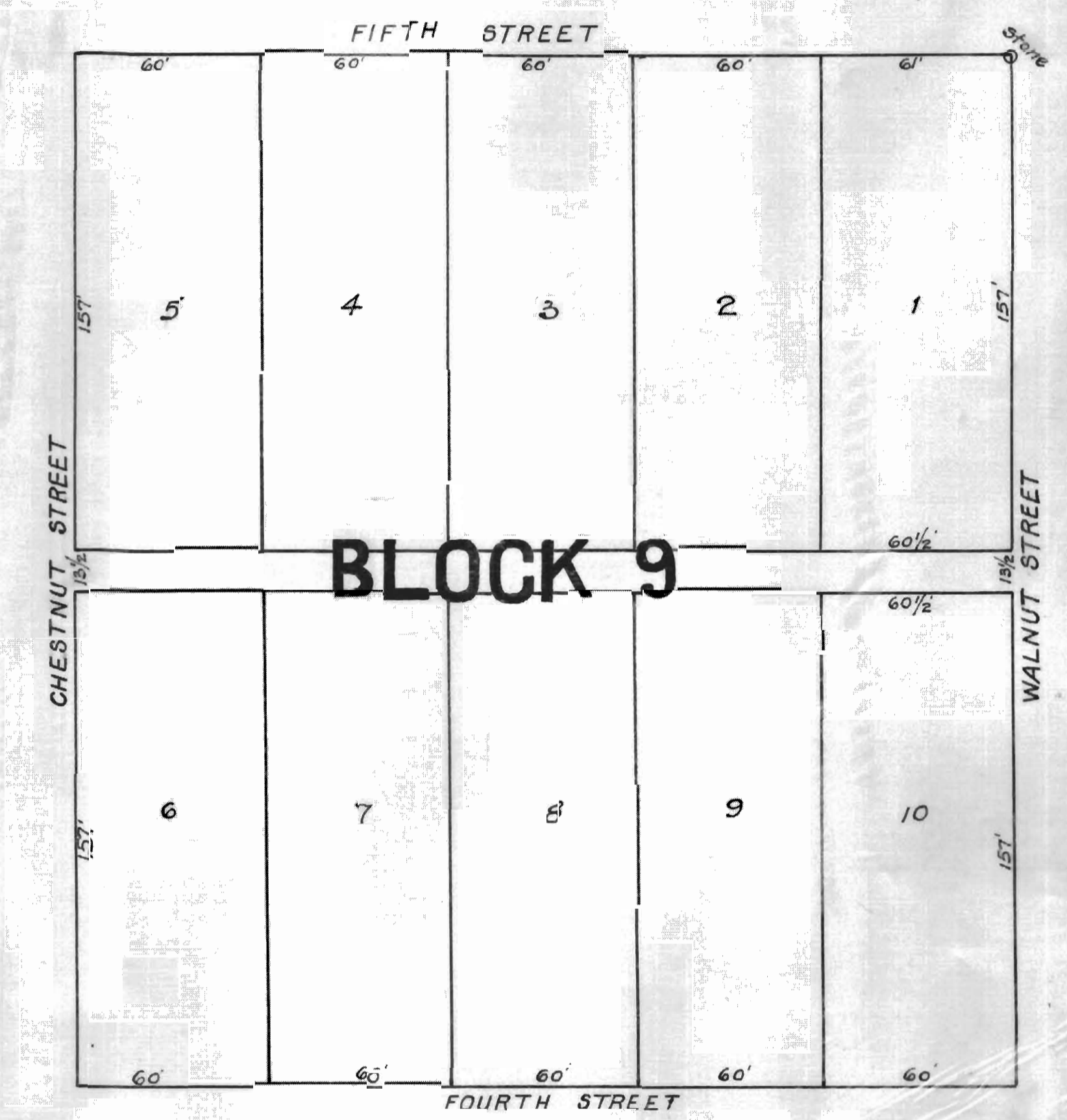


16 W. 36th
 16. W. 36th Addition to Mantorville in Dodge County, Minnesota
 platy addition on the E. E. of Section 21 in Township 42 N. Range 16 W. 2nd 1st 1st 2nd 3rd 4th 5th 6th 7th 8th 9th 10th 11th 12th 13th 14th 15th 16th 17th 18th 19th 20th 21st 22nd 23rd 24th 25th 26th 27th 28th 29th 30th 31st 32nd 33rd 34th 35th 36th 37th 38th 39th 40th 41st 42nd 43rd 44th 45th 46th 47th 48th 49th 50th 51st 52nd 53rd 54th 55th 56th 57th 58th 59th 60th 61st 62nd 63rd 64th 65th 66th 67th 68th 69th 70th 71st 72nd 73rd 74th 75th 76th 77th 78th 79th 80th 81st 82nd 83rd 84th 85th 86th 87th 88th 89th 90th 91st 92nd 93rd 94th 95th 96th 97th 98th 99th 100th



*Recorded Oct 11 1857
 J. H. Fisher
 Register of Deeds*

FRANK WILSONS SUBDIVISION OF FRANK MANTORS ADDITION TO THE TOWN OF MANTORVILLE



BLOCK 9

Surveyed and recorded by County Surveyor A. A. Crampton November A.D. 1892.
 Plotted according to original survey by D. P. Poboisk January A.D. 1922
 Scale 1"=40 feet

A45