

PRAIRIE STONE

CITY OF KASSON
PLANNING AND ZONING COMMISSION
This plat of PRAIRIE STONE has been approved by the Planning and Zoning Commission of the City of Kasson, Minnesota this 13th day of September, 2004.

Gary Fitch
Chair
Linda Kapper
Secretary

CITY OF KASSON
CITY COUNCIL
This plat of PRAIRIE STONE has been approved by the City Council of the City of Kasson on this 22nd day of September, 2004.

Quane Dunbar
Mayor
Michael Rief
City Clerk

COUNTY SURVEYOR
I certify that this plat has been checked mathematically and that the plat conforms to applicable platting laws.
This 3rd day of November, 2004.

Roger W. Brand
Roger W. Brand
Dodge County Surveyor

COUNTY OF DODGE
AUDITOR/TREASURER
Taxes payable in the year 2004 on the land herein before described, have been paid; there are no delinquent taxes and transfer has been entered on this 2nd day of November, 2004.

Janet Prigg
Dodge County Auditor/Treasurer

by _____ Deputy
COUNTY RECORDER
Document Number 156328
I hereby certify that this instrument was filed in the Office of the County Recorder for record on this 5th day of NOVEMBER, 2004 at 8:00 o'clock A.m. and was duly recorded in Book B of PLATS

Sue Roberts By
Dodge County Recorder
Ann D Bradford
Deputy

SURVEYOR'S CERTIFICATE
I do hereby certify that I have surveyed and platted the property described on this plat as PRAIRIE STONE; that this plat is a correct representation of said survey; that all distances are correctly shown on said plat in feet and hundredths of a foot; that all monuments have been correctly placed in the ground as shown; that the outside boundary lines are correctly designated; that there are no wet lands as defined in MS 505.02, SUBD. 1, or public highways to be designated on said plat other than as shown.

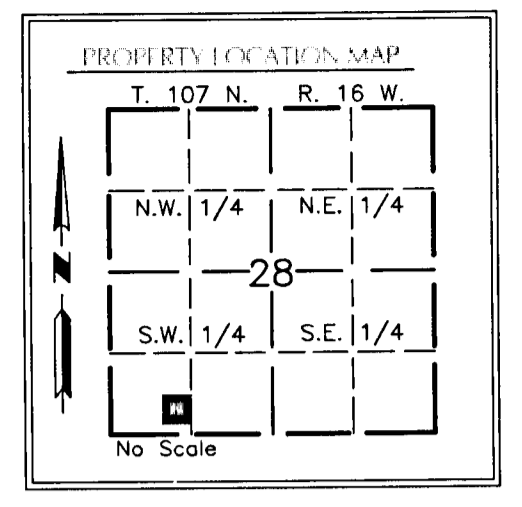
Richard J. Massey
Richard J. Massey
Minnesota L.S. No. 41814

STATE OF MINNESOTA
COUNTY OF DODGE
The foregoing Surveyor's Certificate was acknowledged before me this 30th day of SEPTEMBER, 2004 by Richard J. Massey, L.S. No. 41814.

Richard A. Singbusch
NOTARY PUBLIC-MINNESOTA
MY COMMISSION EXPIRES 1-31-2005

Richard A. Singbusch
Notary Public, Dodge County, MN
My Commission Expires 1-31-2005

MASSEY LAND SURVEYING, INC.
SURVEYORS AND ENGINEERS
P.O. BOX 428
KASSON, MN 55944
PH. NO. 507-634-4505



BEARINGS
Bearings are on the Dodge County Coordinate System, NAD '83, 1996 adjustment.

UTILITY EASEMENT DEFINED
An unobstructed easement for the construction and maintenance of all necessary overhead, underground or surface public utilities, including rights to conduct drainage and trimming on said easement.

DRAINAGE EASEMENT DEFINED
An unobstructed easement for the construction and maintenance of underground and surface drainage facilities and utility easement.

A utility and drainage easement is dedicated over all of Outlot A.

INSTRUMENT OF DEDICATION
KNOW ALL MEN BY THESE PRESENTS: That Prairie Assistance L.L.C., a Minnesota Limited Liability Company, owner and proprietor of the following described property situated in the County of Dodge, State of Minnesota, to wit:

Part of the Southwest Quarter of the Southwest Quarter of Section 28, Township 107 North, Range 16 West, Dodge County, Minnesota, described as follows:

Commencing at the southwest corner of the Southwest Quarter of said Section 28; thence South 89 degrees 54 minutes 51 seconds East (NOTE: All bearings are in relation with the Dodge County Coordinate System NAD 83, Adjusted 1996) along the south line of said Southwest Quarter for a distance of 849.70 feet to the southeast corner of Lot 1, Block 2, MARTI'S FIRST SUBDIVISION; thence North 00 degrees 05 minutes 09 seconds East along the east line of said Lot 1 for a distance of 165.00 feet to the POINT OF BEGINNING; thence continue North 00 degrees 05 minutes 09 seconds East along said east line and its northerly extension for a distance of 465.09 feet; thence South 89 degrees 54 minutes 51 seconds East parallel with said south line of the Southwest Quarter for a distance of 467.82 feet to the east line of the Southwest Quarter of said Southwest Quarter; thence South 00 degrees 01 minutes 53 seconds East along said east line for a distance of 465.09 feet to the northeast corner of Block 1 of said MARTI'S FIRST SUBDIVISION; thence North 89 degrees 54 minutes 51 seconds West along the north line of said Block 1 for a distance of 468.78 feet to the POINT OF BEGINNING.

Said Parcel contains 5.00 acres, more or less.

Has caused the same to be surveyed and platted as PRAIRIE STONE and do hereby donate and dedicate to the public for public use forever the easements and thoroughfares as shown on this plat.

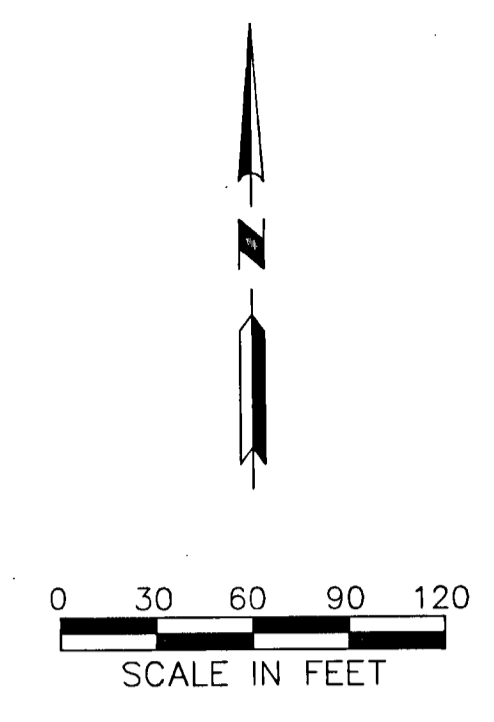
In witness whereof, said Prairie Assistance L.L.C., a Minnesota Limited Liability Company has caused these presents to be signed by its proper officers this 28 day of October, 2004.

Bryan Schoeppner
Pat Blum

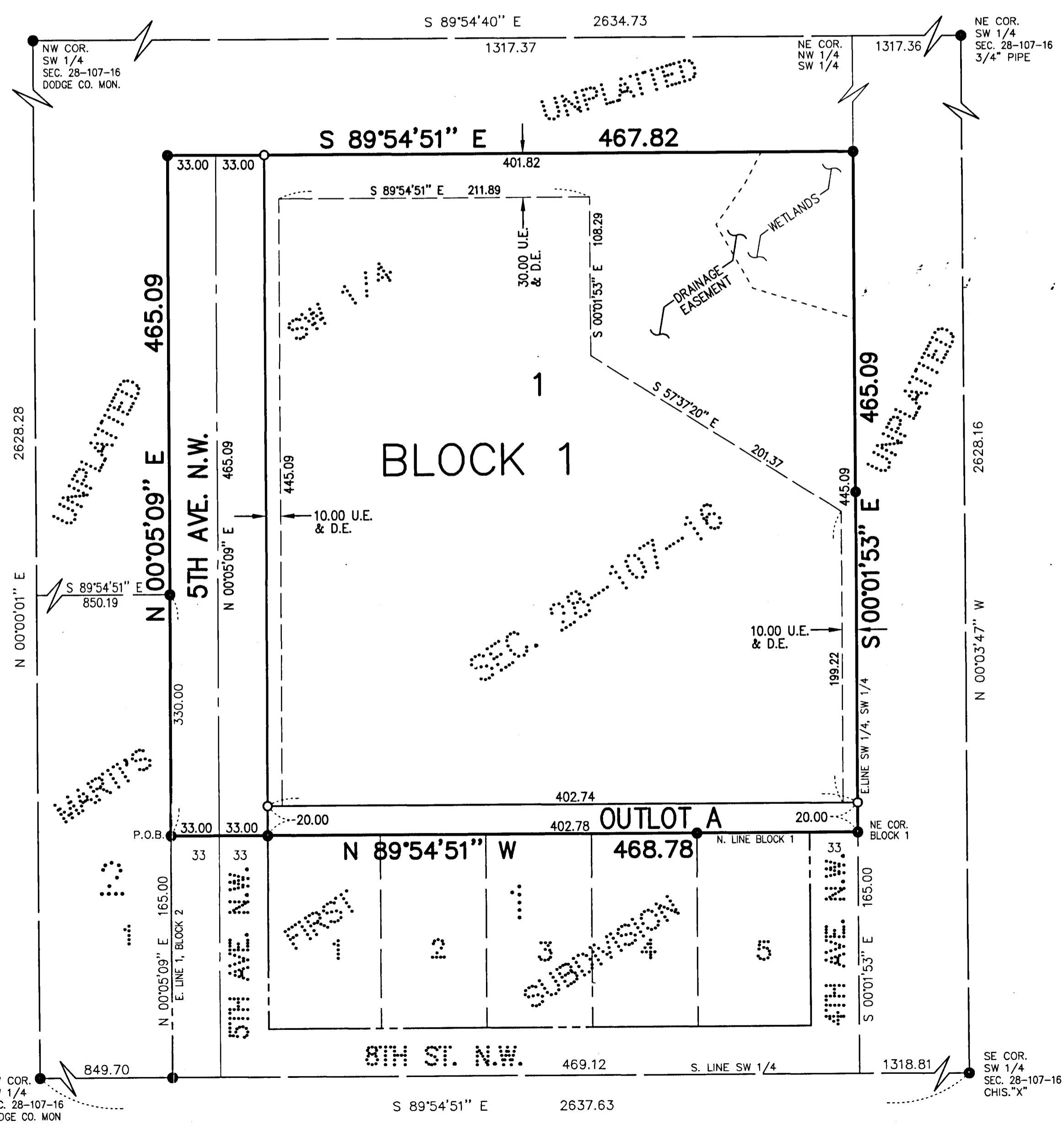
STATE OF MINNESOTA
COUNTY OF Olmsted
The foregoing instrument was acknowledged before me this 28 day of October, 2004 by Bryan Schoeppner, its Manager and Pat Blum, its Manager, on behalf of said Prairie Assistance L.L.C., a Minnesota Limited Liability Company.

THOMAS G. AMOS
Notary Public
Minnesota
My Commission Expires Jan. 31, 2005

Thomas G. Amos
Notary Public, Olmsted County
My Commission Expires Jan. 31, 2005



MONUMENTS
○ SET (5/8" PIPE UNLESS NOTED OTHERWISE)
● FOUND MONUMENTS (5/8" PIPE UNLESS NOTED OTHERWISE)
All monuments set have a plastic cap stamped L.S. 41814.



PROJECT NUMBER 984
COMPUTER FILE: 0984SF01.DWG
DATE: 08/24/04