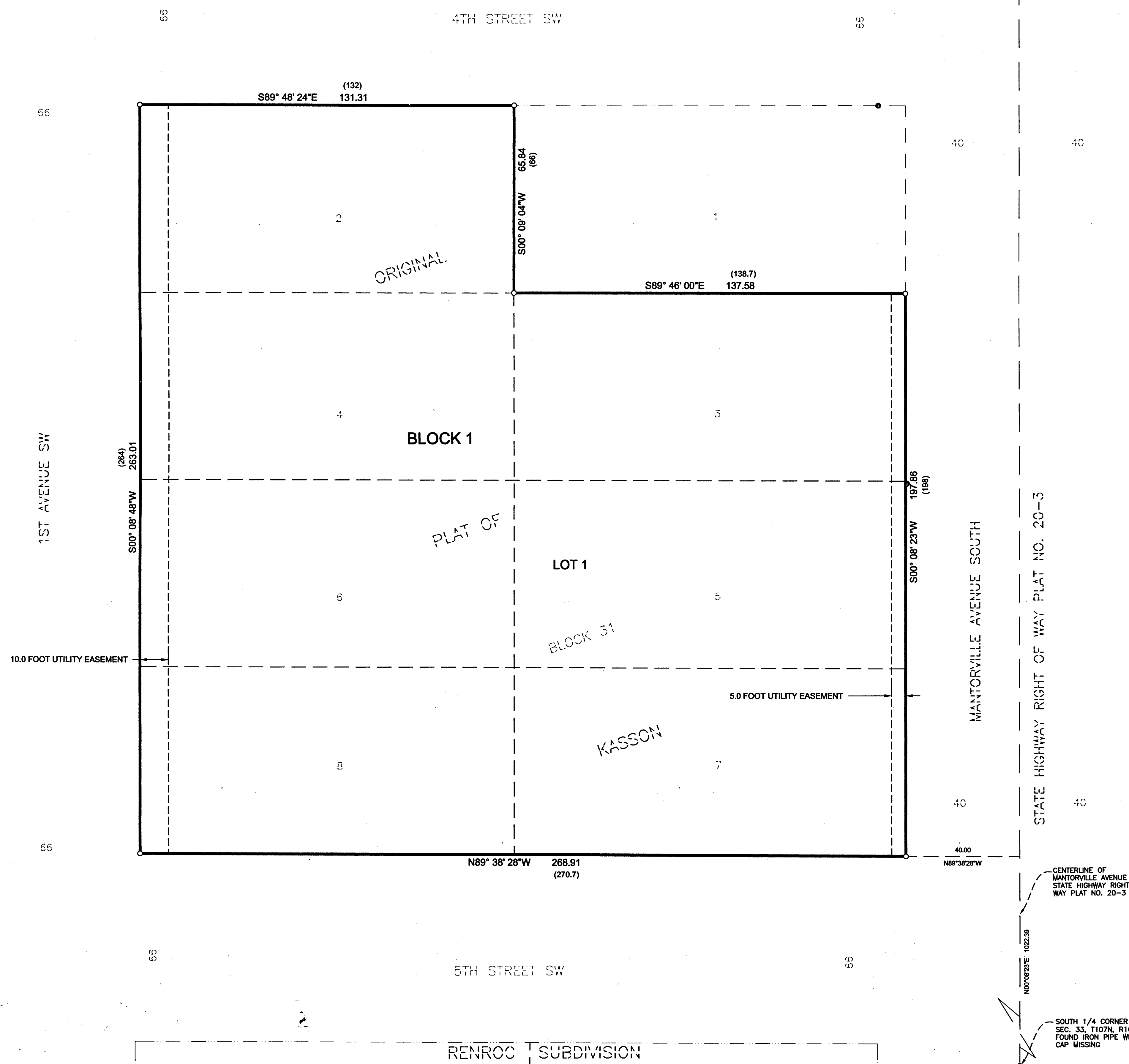


CASEYS GENERAL STORE ADDITION

SHOPKO ADDITION

ORIGINAL PLAT OF KASSON



KNOW ALL PERSONS BY THESE PRESENTS: That Casey's Retail Company, an Iowa Corporation, fee owner of the following described property: Lot Three (3) and the North two (2) feet of Lot Five (5), in Block Thirty-one (31), Original Plat, City of Kasson, Dodge County, Minnesota, except that part of Lot 3 and the North 2 feet of Lot 5, which lies easterly of a line run parallel and distance 40 feet westerly of the center of a line of Mantorville Avenue as platted and taken for highway purposes.

AND

Lot Seven (7); and, except the North 2 feet thereof, all of Lot Five (5), Block Thirty-one (31), Original Plat, City of Kasson, Dodge County, Minnesota Except that part of the above described property which lies Easterly of a line run parallel with and distant 40 feet westerly of the center line of Mantorville Ave as platted.

AND

Lots Two (2) and Four (4), Block Thirty-one (31), Village of Kasson, Dodge County, Minnesota.

AND

Lots Six (6) and Eight (8), Block Thirty-one (31), Village of Kasson, Dodge County, Minnesota.

Has caused the same to be surveyed and platted as CASEYS GENERAL STORE ADDITION and does hereby dedicate to the public for public use the utility easements as created herewith as shown on this plat.

In witness, whereof, said Casey's Retail Company, an Iowa Corporation, has caused these presents to be signed by its proper officers this 11th day of December, 2018.

Signed: Casey's Retail Company
 By: Richard T. Schappert Vice President
 Richard T. Schappert

STATE OF Iowa
 COUNTY OF Polk

This instrument was acknowledged before me this 11th day of December, 2018 by Richard T. Schappert Vice President of Casey's Retail Company, on behalf of the company.

Richard T. Schappert signature
 Notary Public Polk County, IA
 My commission expires 3/6/19

I Jonathan D. Schuette do hereby certify that this plat was prepared by me or under my direct supervision; that I am a duly Licensed Land Surveyor in the State of Minnesota; that this plat is a correct representation of the boundary survey; that all mathematical data and labels are correctly designated on this plat; that all monuments depicted on this plat have been, or will be correctly set within one year; that all water boundaries and wet lands, as defined in Minnesota Statutes, Section 505.01, Subd. 3, as of the date of this certificate are shown and labeled on this plat; and all public ways are shown and labeled on this plat.

Dated this 5 day of December, 2018.

Jonathan D. Schuette signature
 Jonathan D. Schuette, Licensed Land Surveyor
 Minnesota License No. 45352

STATE OF Minnesota
 COUNTY OF Douglas

This instrument was acknowledged before me on December 5th, 2018 by Jonathan D. Schuette.

Jonathan D. Schuette signature
 Notary Public, Minnesota
 My commission expires 1-31-2020

KASSON, MINNESOTA
 This plat of CASEYS GENERAL STORE ADDITION was approved and accepted by the City Council of Kasson, Minnesota, at its regular meeting thereof held on this 11th day of July, 2018.

Chris Spaldal signature
 City Clerk

TAXPAYER SERVICES DEPARTMENT, Dodge County, Minnesota

I do hereby certify that the taxes payable in the year 2018 on the land described have been paid, there are no delinquent taxes and transfer has been entered this 20th day of February, 2019.

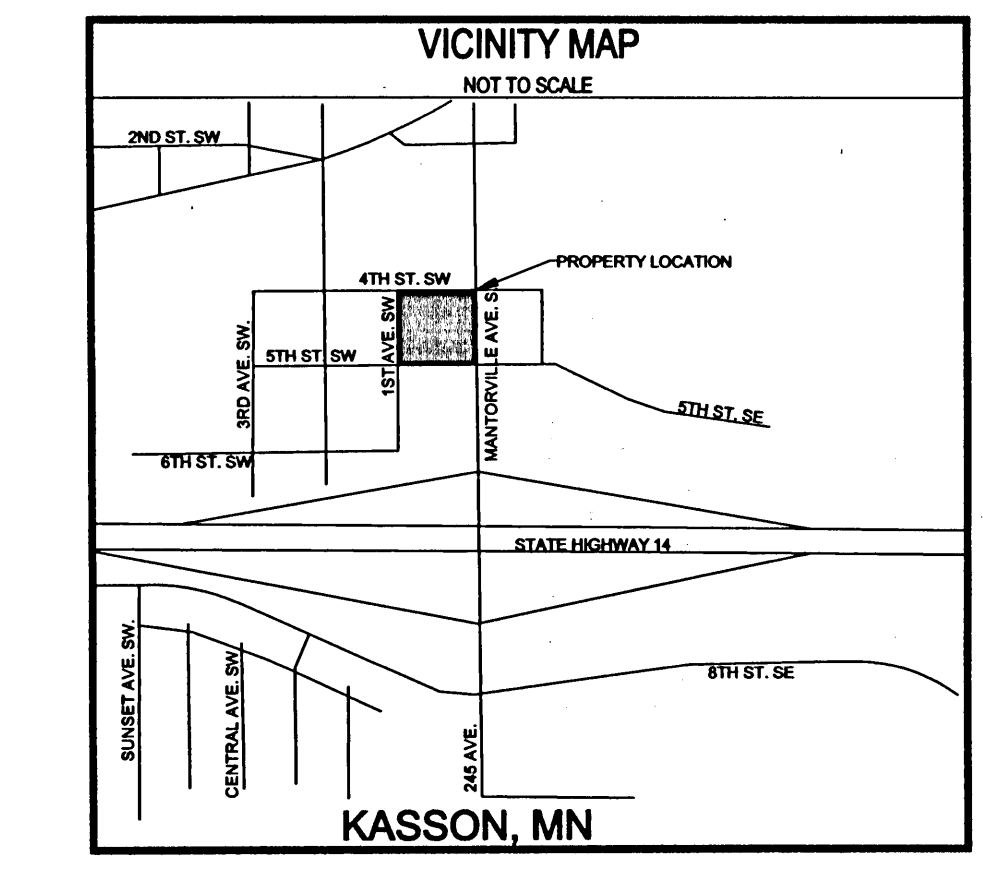
S. A. Kraus signature
 County Auditor

COUNTY SURVEYOR, Dodge County, Minnesota
 I hereby certify that this plat has been checked and approved as to compliance with Chapter 505, Minnesota Statutes this 19th day of February, 2019.

Lisa M. Hann signature
 Lisa M. Hann, L.S., County Surveyor

COUNTY RECORDER, Dodge County, Minnesota
 Document Number 227877
 I hereby certify that this instrument was filed in the office of the County Recorder for record on this 26th day of February, 2019 at 3:00 o'clock P.M., and was duly recorded as Plat Number B of Plats, Page 166

Debra J. Decker signature
 County Recorder, Dodge County, Minnesota



0 20 40
 SCALE IN FEET

- = DENOTES FOUND IRON MONUMENT
- = DENOTES 1/2 INCH DIAMETER BY 18 INCH LONG IRON PIPE MONUMENT SET AND MARKED RLS# 45352
- (198) = RECORD MEASUREMENT

ORIENTATION OF THIS BEARING SYSTEM IS BASED ON SOUTH LINE OF THE BLOCK 31 ORIGINAL PLAT OF KASSON, ACCORDING TO THE RECORDED PLAT, DODGE COUNTY, MN, HAVING AN ASSUMED BEARING OF SOUTH 89°38'28" WEST

DESIGN TREE
 engineering + land surveying
 St. Cloud | Alexandria | Rogers
 320-217-5557