

"OFFICIAL PLAT"

SWENKE'S RIVERSIDE

I hereby certify that I have surveyed and platted the property described on this plat as SWENKE'S RIVERSIDE; that this is a correct representation of the survey; that all distances are correctly shown on the plat in feet and hundredths of a foot; that all monuments have been correctly placed in the ground as shown; that the outside boundary lines are correctly designated on the plat and that there are no wet lands or public highways to be designated other than as shown.

Vincent Fangman
Vincent A. Fangman, Minnesota Reg. No. 14888

State of Minnesota
County of Olmsted

The surveyor's certificate was subscribed and sworn to before me a Notary Public, this 29th day of July, 1993.

Vincent A. Fangman
Notary Public, Olmsted County

My commission expires 5-21-97



We do hereby certify that on the 21st day of July, 1993, the City Council of Kasson, Minnesota approved this plat.

Polmer Carlsen, Mayor
Dolores Meyer, City Clerk-Administrator

Approved by the Planning Commission of the City of Kasson, Minnesota, at a meeting thereof, on the 3rd day of August, 1993.

Larry Padon
Commission Chairman

No delinquent taxes due and transfer entered this 3rd day of August, 1993.

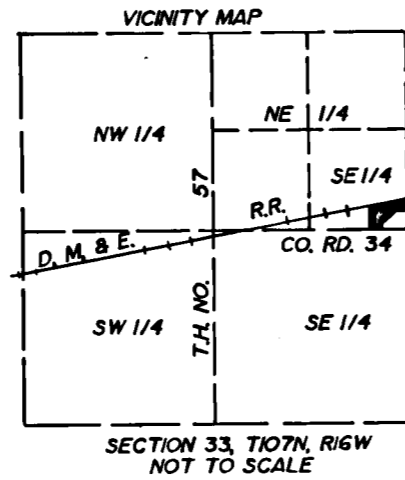
Paul Strobel
Dodge County Auditor

Taxes due and payable for the year 1994 have been paid.

Janet Drupp Date 10-25-94
Dodge County Treasurer

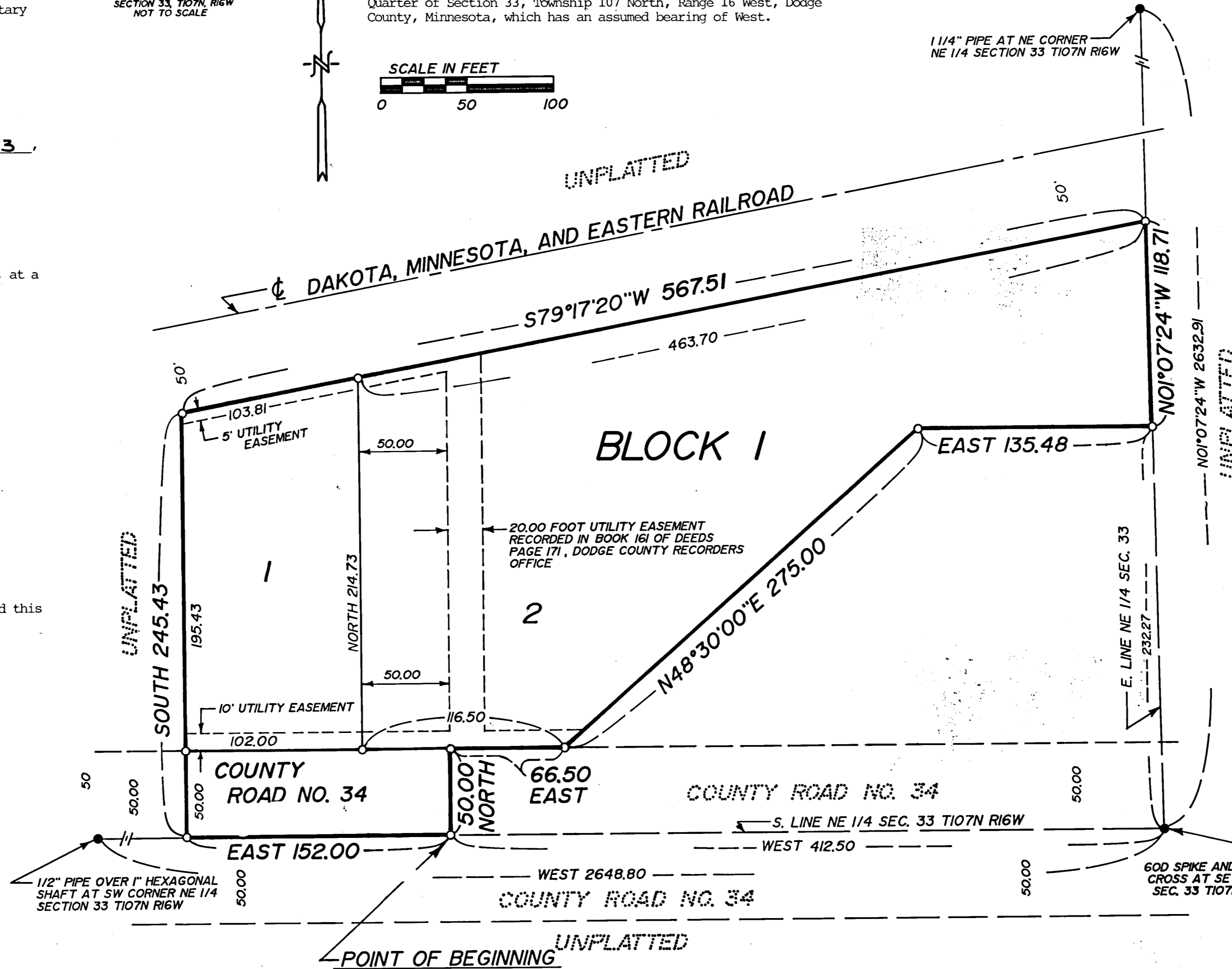
I certify that this plat has been checked mathematically and approved this 10th day of August, 1993.

Roger W. Brand
Dodge County Surveyor



Monuments shown thus : O are set 1/2" pipes with plastic cap bearing registration no. 14888
Monuments shown thus : ● are found monuments as indicated.

All bearings are in relation to the south line of the Northeast Quarter of Section 33, Township 107 North, Range 16 West, Dodge County, Minnesota, which has an assumed bearing of West.



KNOW ALL MEN BY THESE PRESENTS: That Swenke Company, Inc., Gregory G. Knudson, a single person, Kevin R. Staloch and Maureen M. Staloch, his wife, also known as Maureen M. Knudson, Citicorp Mortgage, Incorporated, a mortgagee, and the City of Kasson, mortgagee, owners and proprietors of the following described property situated in the City of Kasson, State of Minnesota, to wit:

That part of the Southeast Quarter of the Northeast Quarter of Section 33, Township 107 North, Range 16 West, Dodge County, Minnesota described as follows:

Commencing at the southeast corner of the Northeast Quarter of said Section 33; thence West, assumed bearing, along the south line of said Northeast Quarter, 412.50 feet for a point of beginning; thence North 50.00 feet; thence East, 66.50 feet; thence N48°30'00"E, 275.00 feet; thence East, 135.48 feet to the east line of said Northeast Quarter; thence N01°07'24"W, along said east line, 118.71 feet to the southerly right of way line of the Dakota, Minnesota, and Eastern Railroad; thence S79°17'20"W, along said right of way line, 567.51 feet; thence South, 245.43 feet to the south line of said Northeast Quarter; thence East, along said south line, 152.00 feet to the point of beginning.

Have caused the same to be surveyed and platted as SWENKE'S RIVERSIDE and do hereby donate and dedicate to the public for public use forever the thoroughfare and dedicate the easements as shown on this plat for drainage and utility purposes only.

In witness whereof said Swenke Company, Inc., a Minnesota Corporation, has caused these presents to be signed by its proper officers and its corporate seal to be hereunto affixed this 10 day of August, 1993.

By Richard J. Swenke its President

State of MINNESOTA
County of OLMSTED
Notary Public, OLMSTED COUNTY
My Commission Expires 11-13-93

The foregoing instrument was acknowledged before me this 10 day of Aug, 1993 by Richard J. Swenke its President, Swenke Company Inc., a Minnesota Corporation, on behalf of the corporation.

Jeffrey L. Reed Notary Public,
Olmsted County, State of Minnesota

My commission expires 3-18-95

In witness whereof said Gregory G. Knudson, a single person, has hereunto set his hands this 4 day of Aug, 1993.

Gregory G. Knudson
Gregory G. Knudson

State of Minnesota
County of Dodge

The foregoing instrument was acknowledged before me this 4 day of Aug, 1993 by Gregory G. Knudson, a single person.

Jeffrey L. Reed
Notary Public, Dodge County

My commission expires 3-18-92

In witness whereof said Kevin R. Staloch and Maureen M. Staloch, his wife, also known as Maureen M. Knudson, have hereunto set their hands this 24 day of Feb, 1994.

Kevin R. Staloch
Maureen M. Staloch
Kevin R. Staloch
Maureen M. Staloch

State of Minnesota
County of OLMSTED

The foregoing instrument was acknowledged before me this 24 day of Feb, 1994 by Kevin R. Staloch, and Maureen M. Staloch, husband and wife.

Jeffrey L. Reed
Notary Public, OLMSTED County, Minnesota

My commission expires 3/18/98

In witness whereof said City of Kasson, a Minnesota municipal corporation has caused these presents to be signed by its proper officers this 10th day of August, 1993.

By Polmer Carlsen, Mayor
By Dolores Meyer, City Clerk-Administrator

State of Minnesota
County of Dodge
Notary Public, Minnesota
Olmsted County
My Commission Expires Mar. 13, 1993

The foregoing instrument was acknowledged before me this 10th day of Aug, 1993 by Polmer Carlsen, Mayor, and Dolores Meyer, City Clerk-Administrator, a Minnesota municipal corporation, on behalf of the corporation.

Jeffrey L. Reed
Notary Public, Dodge County, Minnesota

My commission expires 3-18-93

In witness whereof said Citicorp Mortgage, Incorporated, a National Corporation, has caused these presents to be signed by its proper officers and its corporate seal to be hereunto affixed this 15th day of DECEMBER, 1993.

By Joseph A. Cohen its VICE PRESIDENT
By Laura E. Charpentier its ASSISTANT SECRETARY

State of MISSOURI
County of ST. LOUIS

The foregoing instrument was acknowledged before me this 15th day of DECEMBER, 1993 by JOSEPH A. COHEN its VICE PRESIDENT and Laura E. Charpentier its ASSISTANT SECRETARY, Citicorp Mortgage, Incorporated, a National Delaware Corporation, on behalf of the corporation.

Patricia J. Keith
Notary Public, St. Louis County, State of Missouri

My commission expires 2/15/94

