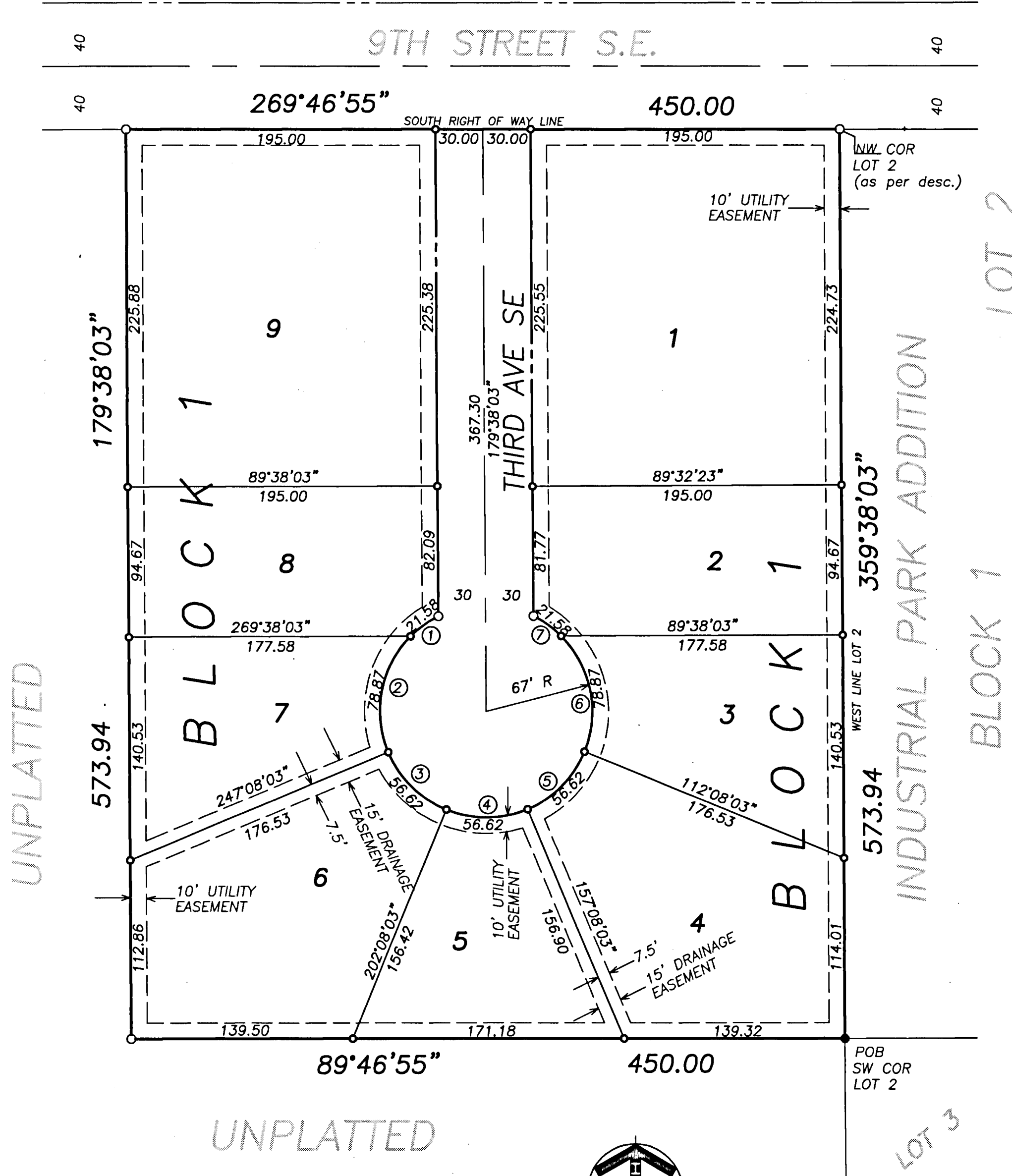


# CANDLEWOOD HEIGHTS



### INSTRUMENT OF DEDICATION

KNOW ALL MEN BY THESE PRESENTS: that Southeastern Minnesota Multi-County Housing and Redevelopment Authority, a Public Authority, under the laws of the State of Minnesota, owners and proprietors of the following described property situated in the City of Hayfield, County of Dodge, State of Minnesota, to wit:

That part of the South Half of the Southeast Quarter of Section 22, Township 105 North, Range 17 West, Dodge County, Minnesota, described as follows:

Beginning at the southwest corner of Lot 2, Block 1, Industrial Park Subdivision, according to the plat thereof on file in the County Recorder's Office, Dodge County, Minnesota; thence northerly on an assumed azimuth from north of 359 degrees 38 minutes 03 seconds along the west line of said Lot 2 a distance of 573.94 feet to the northwest corner of said Lot 2 and the southerly right of way line of Ninth Street S.E.; thence westerly 269 degrees 46 minutes 55 seconds azimuth along said southerly right of way line 450.00 feet; thence southerly 179 degrees 38 minutes 03 seconds azimuth 573.94 feet; thence easterly 89 degrees 46 minutes 55 seconds azimuth 450.00 feet to the point of beginning.

Said tract contains 5.93 acres more or less.

Have caused the same to be surveyed and platted as CANDLEWOOD HEIGHTS and do hereby donate and grant to the public for public use forever the throughfare or cul-de-sac and the easements as shown on this plat.

In witness whereof, said Southeastern Minnesota Multi-County Housing and Redevelopment Authority has caused these presents to be signed by its Executive Director. This 10 day of July, 2000.

Joseph P. Wheeler, Executive Director

STATE OF MINNESOTA  
COUNTY OF WABASHA

The foregoing instrument was acknowledged before me this 10th day of July, 2000, by Joseph P. Wheeler, the Executive Director of the Southeastern Minnesota Multi-County Housing and Redevelopment Authority, on behalf of the Authority.

Cheryl A. Richardson  
Notary Public, Wabasha County, MN  
My Commission Expires 1-31-2005

### COUNTY RECORDER

Document Number 124490 124490

I hereby Certify that this instrument was filed in the Office of the County Recorder for record on this 12th day of July, 2000 at 4:30 o'clock P.M. and was duly recorded in Dodge County Records.

Book B of Plats page 61.

Sheryl R. Roberts  
Dodge County Recorder

### COUNTY AUDITOR

No delinquent taxes due and transfer entered this 11th day of July, 2000.

Janet Prigg  
Dodge County Auditor

### COUNTY TREASURER

Taxes due and payable for the year 2000, have been paid as of this day of July 11, 2000.

Janet Prigg  
Dodge County Treasurer

### CITY APPROVAL

We do hereby certify that the within plat of CANDLEWOOD HEIGHTS was duly accepted and approved by the City Council of the City of Hayfield, on the day of June 19, 2000.

David Antice, Mayor; Teri Kindry, City Clerk

### CITY PLANNING COMMISSION

Approved by the Planning Commission of the City of Hayfield, Minnesota at a regular meeting thereof, on the 19 day of June, 2000.

David Antice, Chairman

### COUNTY SURVEYOR

I certify that this plat has been checked mathematically and that the plat conforms to the applicable platting laws.

This 10th day of July, 2000.

Roger W. Brand  
Roger W. Brand, Dodge County Surveyor

### SURVEYOR'S CERTIFICATE

I do hereby certify that I have surveyed and platted the property described on this plat as CANDLEWOOD HEIGHTS, that this plat is a correct representation of said survey, that all distances are correctly shown on said plat in feet and hundredths of a foot, that all monuments have been correctly placed in the ground as shown, or will be correctly placed in the ground by June 1, 2001; that the outside boundary lines are correctly designated; and that there are no wetlands as defined in MS 505.02, Subd. 1, or public highways to be designated on said plat other than as shown.

Michael J. Fritz  
Michael J. Fritz  
MN L.S. License No. 20703

STATE OF MINNESOTA  
COUNTY OF OLMSTED

The foregoing Surveyor's Certificate was acknowledged before me this 10th day of July, 2000, by Michael J. Fritz.

Barbara S. Dickhut  
Notary Public, Minnesota  
My Commission Expires 1-31-2001

Barbara S. Dickhut  
Notary Public, Olmsted County, MN  
My Commission Expires 1-31-2005

### LEGEND

- PLACED 3/4" X 18" IRON PIPE
- PLACED 1/2" X 18" REBAR
- FOUND MONUMENT

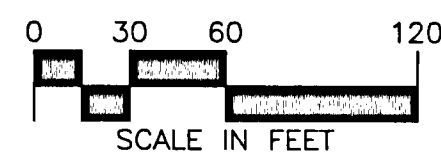
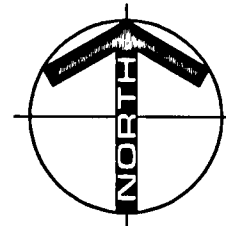
PLACED MONUMENTS HAVE A PLASTIC CAP STAMPED RLS20703

### UTILITY EASEMENT DEFINED

An unobstructed easement for the construction and maintenance of all necessary overhead, underground or surface public utilities, including rights to conduct drainage and trimming on said easement.

### DRAINAGE EASEMENT DEFINED

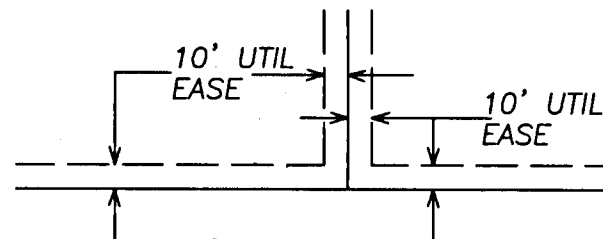
An unobstructed easement for the construction and maintenance of underground and surface drainage facilities and utility easement.



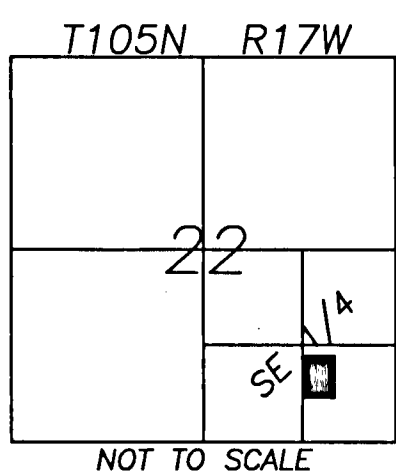
### BEARINGS

Plat bearings are Minnesota State Plane Grid Azimuths measured to the right from an assumed North.

### UTILITY EASEMENTS SHOWN THUS



### LOCATION MAP



NUMBER	LENGTH	DELTA	RADIUS	CHORD	CHORD AZ.
1	21.58	18°27'07"	67.00	21.48	233°48'29"
2	78.87	67°26'53"	67.00	74.40	190°51'29"
3	52.62	45°00'00"	67.00	51.28	134°38'03"
4	52.62	45°00'00"	67.00	51.28	269°38'03"
5	52.62	45°00'00"	67.00	51.28	224°38'03"
6	78.87	67°26'53"	67.00	74.40	348°24'36"
7	21.58	18°27'07"	67.00	21.48	305°27'34"

DRAFTSPERSON: J.G. C.A.J.

DATE: 5/24/00

COMPUTER FILE: 7081SFD1.DWG

PROJECT NUMBER: 7081