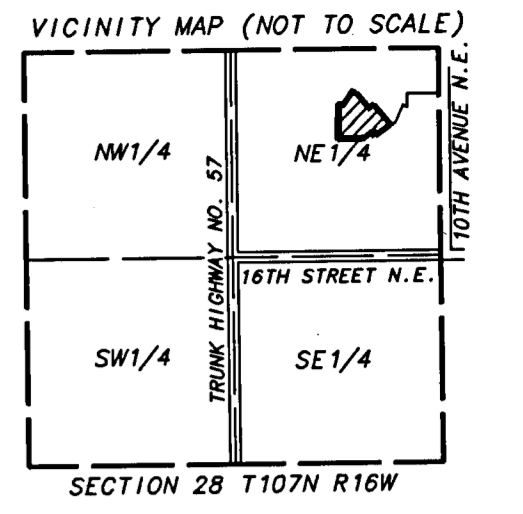


KASSON MEADOWS THIRD SUBDIVISION



I hereby certify that I have surveyed and platted the property described on this plat as KASSON MEADOWS THIRD SUBDIVISION; that this is a correct representation of the survey; that all distances are correctly shown on the plat in feet and hundredths of a foot; that all monuments have been correctly placed in the ground as shown; that the outside boundary lines are correctly designated on the plat and that there are no wet lands as defined in Minnesota Statute 505.02, Subdivision 1, or public highways to be designated other than as shown.

Vincent Fangman
 Vincent A. Fangman Minnesota License No. 14888

State of Minnesota
 County of Olmsted

The surveyor's certificate was subscribed and sworn to before me a Notary Public, this 1st day of November, 2002, by Vincent A. Fangman, Licensed Surveyor.

Sally A. Fangman
 Notary Public, Olmsted County

My commission expires 1-31-2005

Taxes payable in the year 2002, on real estate herein before described, have been paid; there are no delinquent taxes and transfer has been entered, on this 12th day of December, 2002.

Janet Tripp
 Dodge County Auditor/Treasurer

by _____ Deputy

I certify that this plat has been checked mathematically and approved this 11th day of December, 2002.

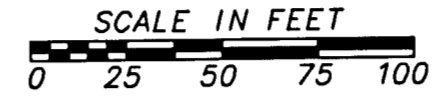
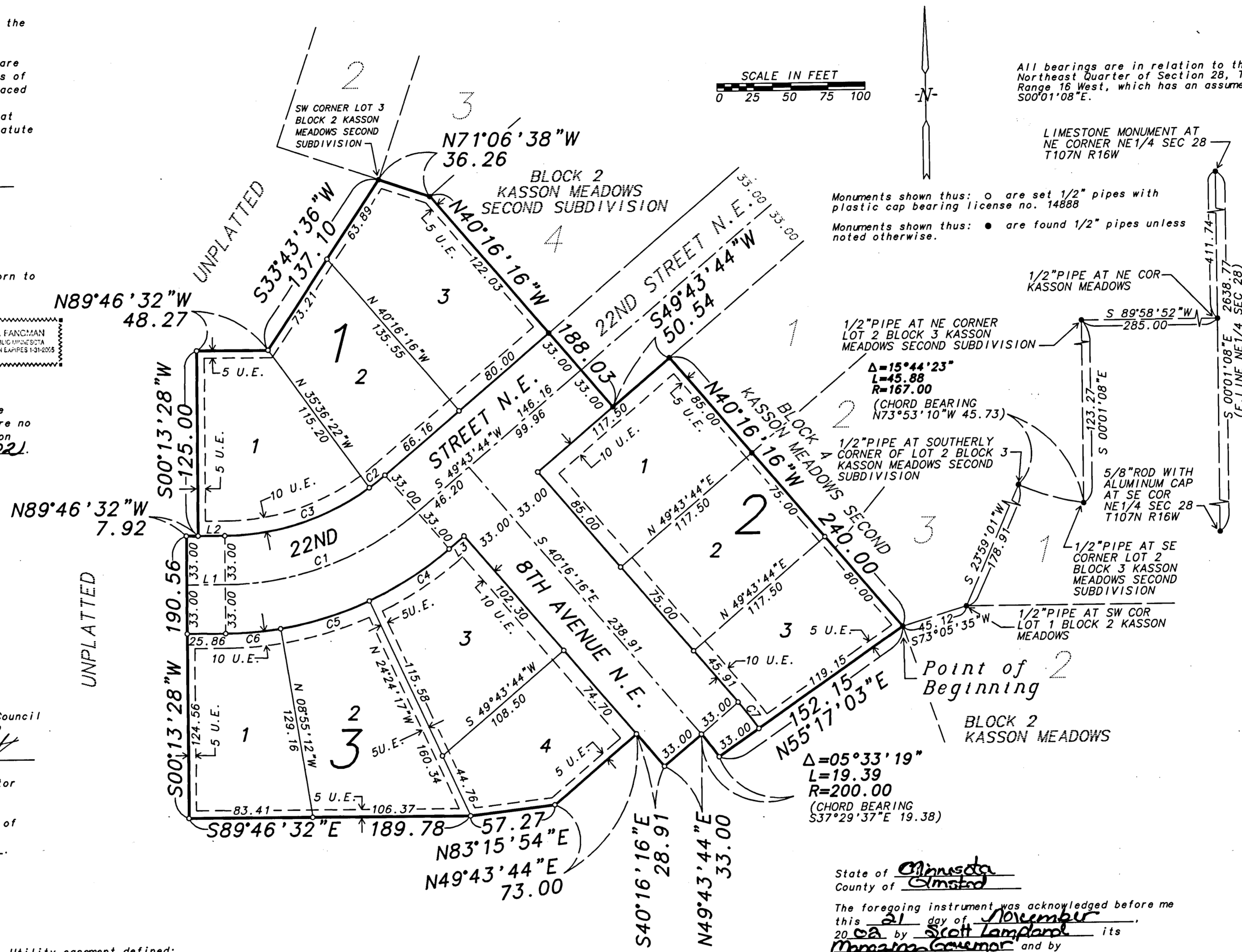
Roger W. Brand
 Dodge County Surveyor

We do hereby certify that on the 9th day of October, 2002, the City Council of Kasson, Minnesota approved this plat.

Duane Burton Michael Rietz
 Duane Burton, Mayor City Clerk-Administrator

Approved by the Planning Commission of the City of Kasson, Minnesota, at a meeting thereof, on the 9th day of October, 2002.

Ray J. D.
 Commission Chairman



All bearings are in relation to the east line of the Northeast Quarter of Section 28, Township 107 North, Range 16 West, which has an assumed bearing of S00°01'08"E.

Monuments shown thus: ○ are set 1/2" pipes with plastic cap bearing license no. 14888
 Monuments shown thus: ● are found 1/2" pipes unless noted otherwise.

LIMESTONE MONUMENT AT NE CORNER NE 1/4 SEC 28 T107N R16W

1/2" PIPE AT NE CORNER LOT 2 BLOCK 3 KASSON MEADOWS SECOND SUBDIVISION

$\Delta = 15^{\circ}44'23''$
 $L = 45.88$
 $R = 167.00$
 (CHORD BEARING N73°53'10"W 45.73)

1/2" PIPE AT SOUTHERLY CORNER OF LOT 2 BLOCK 3 KASSON MEADOWS SECOND SUBDIVISION

5/8" ROD WITH ALUMINUM CAP AT SE COR NE 1/4 SEC 28 T107N R16W

1/2" PIPE AT SE CORNER LOT 2 BLOCK 3 KASSON MEADOWS SECOND SUBDIVISION

1/2" PIPE AT SW COR LOT 1 BLOCK 2 KASSON MEADOWS

Point of Beginning

BLOCK 2 KASSON MEADOWS

$\Delta = 05^{\circ}33'19''$
 $L = 19.39$
 $R = 200.00$
 (CHORD BEARING S37°29'37"E 19.38)

State of Minnesota
 County of Olmsted

The foregoing instrument was acknowledged before me this 21 day of November, 2002, by Scott Lampland its Managing Governor and by Leo Stahl its Governor, Kasson Meadows LLC, a Minnesota Corporation on behalf of the partnership.

Linda Odden
 Notary Public

My commission expires 1-31-2005

Utility easement defined:

An unobstructed easement for the construction and maintenance of all necessary overhead, underground, or surface public utilities including the rights to conduct drainage and trimming on said easement.

UNPLATTED

Document Number 140924

I hereby certify that this instrument was filed in the office of the County Recorder for record this 12th day of December, 2002, at 9:30 o'clock A.M. and was duly recorded in Book 88 of Plats on page 88.

Sue A. Alberts
 County Recorder
 Dodge County, Minnesota

CURVE	DELTA ANGLE	RADIUS	ARC	CHORD	CHORD BEARING
C 1	40°29'44"	200.00	141.36	138.43	S 69°58'36"W
C 2	04°39'54"	167.00	13.60	13.59	S 52°03'41"W
C 3	35°49'50"	167.00	104.44	102.74	S 72°18'33"W
C 4	15°51'59"	233.00	64.52	64.32	S 57°39'44"W
C 5	15°29'05"	233.00	62.97	62.78	S 73°20'16"W
C 6	09°08'40"	233.00	37.19	37.15	S 85°39'08"W
C 7	05°33'19"	233.00	22.59	22.58	S 37°29'37"E

LINE	BEARING	DISTANCE
L 1	N 89°46'32"W	25.86
L 2	N 89°46'32"W	17.94
L 3	S 49°43'44"W	13.20

KNOW ALL MEN BY THESE PRESENT: That Kasson Meadows LLC, a Minnesota Corporation, owners and proprietors of the following described property situated in the City of Kasson, State of Minnesota, to wit:

That part of the Northeast Quarter of the Northeast Quarter of Section 28, Township 107 North, Range 16 West, Dodge County, Minnesota, City of Kasson described as follows:

Commencing at the northeast corner of the Northeast Quarter of said Section 28; thence S00°01'08"E, assumed bearing, along the east line of said Northeast Quarter, 411.74 feet to the northeast corner of Kasson Meadows, as platted in said Northeast Quarter, (the north and part of the west boundary of said Kasson Meadows is described in the next four courses); thence S89°58'52"W, 285.00 feet; thence S00°01'08"E, 123.27 feet; thence northwesterly 45.88 feet along a curve, not tangent to the last described course, concave to the northeast, central angle of 15°44'23", radius of 167.00 feet and chord of said curve bears N73°53'10"W, 45.73 feet; thence S23°59'01"W, radially to the last described curve, 178.91 feet to the southwest corner of Lot 1, Block 2 of said Kasson Meadows; thence S73°05'35"W, along the south line of Lot 3, Block 4 of Kasson Meadows Second Subdivision, 45.12 feet to the most southerly corner of said Lot 3 for a point of beginning; (the next four courses follow the southwesterly boundary of said Kasson Meadows Second Subdivision); thence N40°16'16"W, 240.00 feet; thence S49°43'44"W, 50.54 feet; thence N40°16'16"W, 188.03 feet; thence N71°06'38"W, 36.26 feet to the southwest corner of Lot 3, Block 2, of said Kasson Meadows Second Subdivision; thence S33°43'36"W, 137.10 feet; thence N89°46'32"W, 48.27 feet; thence S00°13'28"W, 125.00 feet; thence N89°46'32"W, 7.92 feet; thence S00°13'28"W, 190.56 feet; thence S89°46'32"E, 189.78 feet; thence N83°15'54"E, 57.27 feet; thence N49°43'44"E, 73.00 feet; thence S40°16'16"E, 28.91 feet; thence N49°43'44"E, 33.00 feet; thence southeasterly 19.39 feet along a curve, not tangent to the last described course, concave to the southwest, central angle of 05°33'19", radius of 200.00 feet and chord of said curve bears S37°29'37"E, 19.38 feet; thence N55°17'03"E, radially to the last described curve, 152.15 feet to the point of beginning.

Containing 3.04 acres, more or less.

Has caused the same to be surveyed and platted as KASSON MEADOWS THIRD SUBDIVISION and do hereby donate and dedicate to the public for public use forever the thoroughfares and dedicate the easements as shown on this plat for drainage and utility purposes only.

In witness whereof said Kasson Meadows LLC, a Minnesota Corporation, has caused these presents to be signed by its proper officers this 21 day of November, 2002.

By Scott Lampland its Managing Governor
 By Leo Stahl its Governor

