

# WESTPARK TOWNHOMES

### INSTRUMENT OF DEDICATION

KNOW ALL MEN BY THESE PRESENTS: That D & T Dodge, a Minnesota Limited Liability Corporation, owner and proprietor, and Eastwood Bank, a Minnesota Corporation, mortgagee of the following described property situated in the County of Dodge, State of Minnesota, to wit:

That part of the Southeast Quarter of the Northeast Quarter of Section 32, Township 107 North, Range 16 West, Dodge County, Minnesota, described as follows:

Commencing at the southeast corner of the Northeast Quarter of said Section 32; thence North 00 degrees 19 minutes 20 seconds West (NOTE: All bearings are in relation with the Dodge County Coordinate System NAD 83, Adjusted 1996) along the east line of said Northeast Quarter for a distance of 538.96 feet to the northeast corner of WESTFIELD and to the POINT OF BEGINNING; thence North 89 degrees 26 minutes 22 seconds West along the north line of said WESTFIELD for a distance of 331.26 feet to the northwest corner of said WESTFIELD and to the west line of the Northeast Quarter of the Southeast Quarter of the Southeast Quarter of said Northeast Quarter; thence North 00 degrees 17 minutes 19 seconds West along said west line for a distance of 105.00 feet; thence South 89 degrees 26 minutes 22 seconds East parallel with said north line for a distance of 331.20 feet to the east line of said Northeast Quarter; thence South 00 degrees 19 minutes 20 seconds East along said east line for a distance of 105.00 feet to the POINT OF BEGINNING.

Said Parcel contains 0.80 acres, more or less.

Has caused the same to be surveyed and platted as WESTPARK TOWNHOMES and do hereby donate and dedicate to the public for public use forever the thoroughfare and the easements as shown on this plat.

In witness whereof, said D & T Dodge, a Minnesota Limited Liability Corporation, has caused these presents to be signed by its proper officers this 12<sup>th</sup> day of DECEMBER, 2003.

Don E. Marti Thomas Halloran

STATE OF MINNESOTA  
COUNTY OF DODGE

The foregoing instrument was acknowledged before me this 12<sup>th</sup> day of December, 2003 by Don E. Marti, its CHIEF MGR.

and Thomas Halloran, its Sec-Treas., on behalf of said D & T Dodge, a Limited Liability Corporation.

Madeline Sokolow  
Notary Public, Dodge County  
My Commission Expires 1-31-05

In witness whereof, said Eastwood Bank, a Minnesota Corporation, has caused these presents to be signed by its proper officers this 3<sup>rd</sup> day of December, 2003.

Kevin J. Scalan Holly Sue Mason

STATE OF MINNESOTA  
COUNTY OF DODGE

The foregoing instrument was acknowledged before me this 3<sup>rd</sup> day of December, 2003, by Kevin J. Scalan, its VP Branch Mgr

and Holly S. Mason, its Mtg Banker, on behalf of said Eastwood Bank, a Minnesota Corporation.

Jean L. Hanson  
Notary Public - Minnesota  
My Comm. Expires Jan. 31, 2005

Jean L. Hanson  
Notary Public, Dodge County  
My Commission Expires \_\_\_\_\_

CITY OF KASSON  
PLANNING AND ZONING COMMISSION

This plat of WESTPARK TOWNHOMES has been approved by the Planning and Zoning Commission of the City of Kasson, Minnesota this 10<sup>th</sup> day of March, 2003.

Ray J. J. Linda Kapp  
Chair Secretary

CITY OF KASSON  
CITY COUNCIL

This plat of WESTPARK TOWNHOMES has been approved by the City Council of the City of Kasson on this 26<sup>th</sup> day of March, 2003.

Quane Burton Michael Roof  
Mayor City Clerk

COUNTY SURVEYOR

I certify that this plat has been checked mathematically and that the plat conforms to applicable platting laws.

This 16<sup>th</sup> day of December, 2003.

Roger W. Brand  
Dodge County Surveyor

COUNTY OF DODGE  
AUDITOR/TREASURER

Taxes payable in the year 2003 on the land herein before described, have been paid; there are no delinquent taxes and transfer has been entered on this 16<sup>th</sup> day of December, 2003.

Janet Tripp  
Dodge County Auditor/Treasurer

by \_\_\_\_\_ Deputy

COUNTY RECORDER

Document Number 149732

I hereby certify that this instrument was filed in the Office of the County Recorder for record on this 16<sup>th</sup> day of December, 2003, at 2:00 o'clock P.m. and was duly recorded in Book B of Plats on page 94.

Sue D. Allvesto  
Dodge County Recorder

SURVEYOR'S CERTIFICATE

I do hereby certify that I have surveyed and platted the property described on this plat as WESTPARK TOWNHOMES; that this plat is a correct representation of said survey; that all distances are correctly shown on said plat in feet and hundredths of a foot; that all monuments have been correctly placed in the ground as shown; that the outside boundary lines are correctly designated; that there are no wet lands as defined in MS 505.02, SUBD. 1, or public highways to be designated on said plat other than as shown.

Richard J. Massey  
Richard J. Massey  
Minnesota L.S. No. 41814

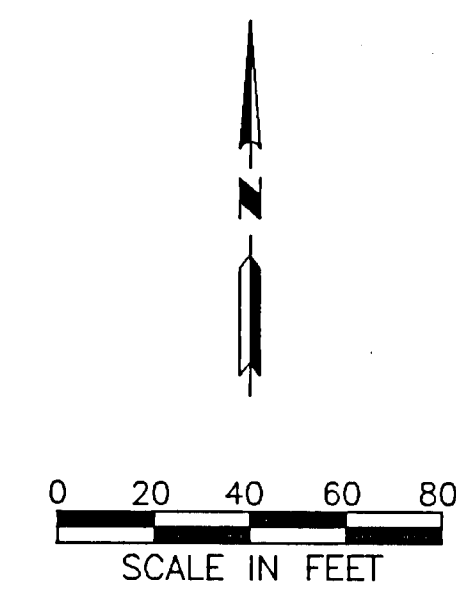
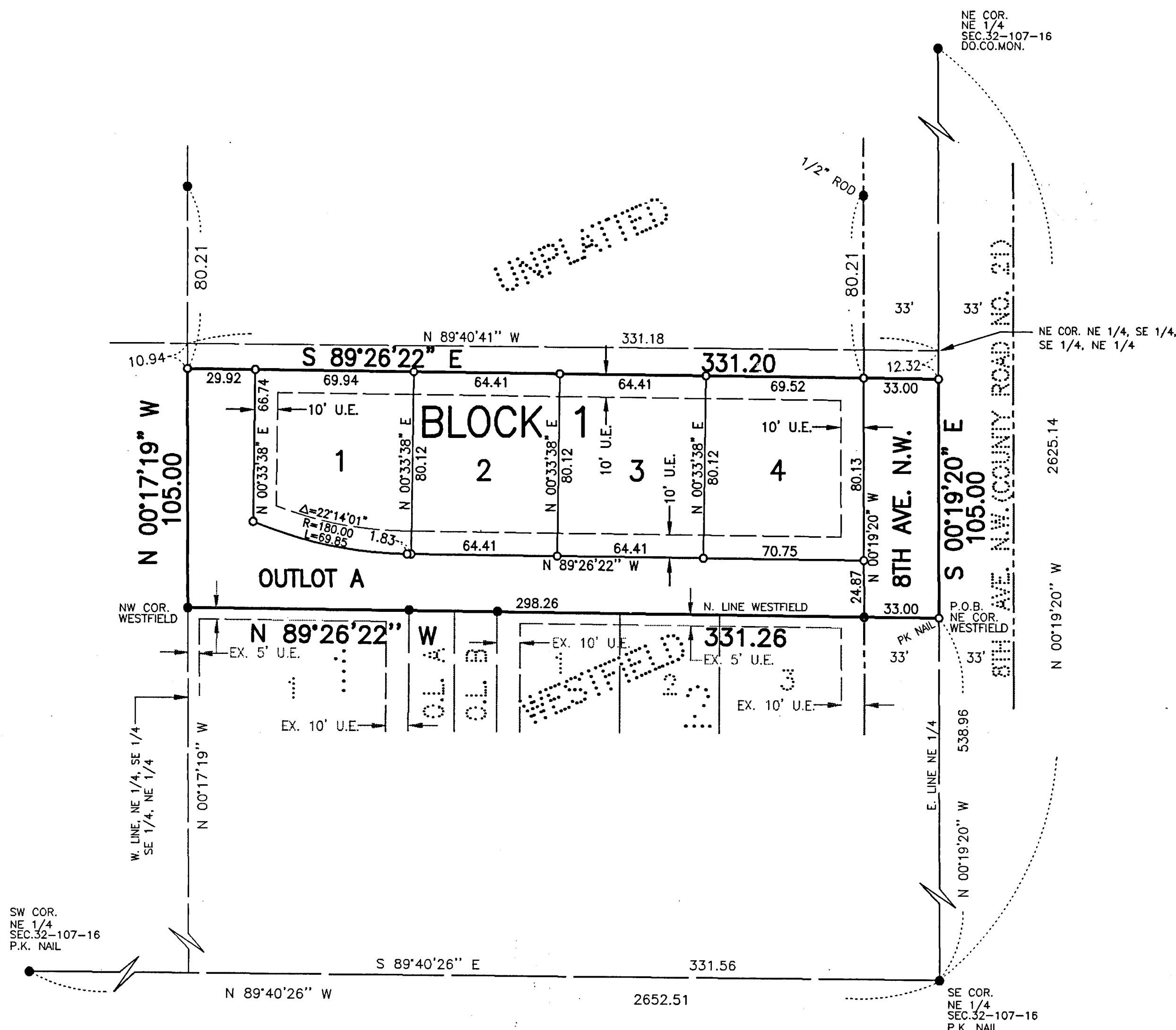
STATE OF MINNESOTA  
COUNTY OF DODGE

The foregoing Surveyor's Certificate was acknowledged before me this 3<sup>rd</sup> day of DECEMBER, 2003, by Richard J. Massey, L.S. No. 41814.

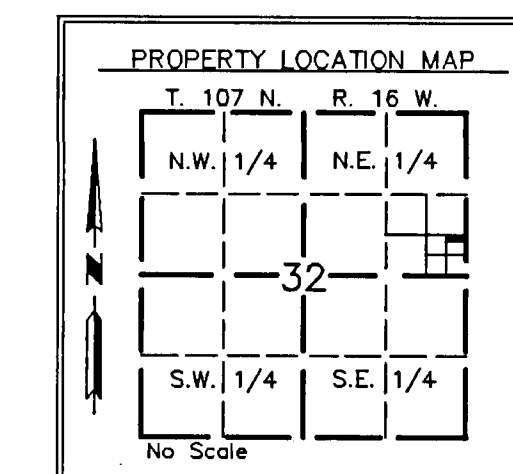
Richard A. Singbusch  
Notary Public - Minnesota  
My Commission Expires 1-31-2005

Richard A. Singbusch  
Notary Public, Dodge County, MN  
My Commission Expires 1-31-2005

PROJECT NUMBER: 0733  
COMPUTER FILE: 0733SF01.DWG  
DATE: 11/11/03



- MONUMENTS
- SET (1/2" PIPE UNLESS NOTED OTHERWISE)
  - FOUND MONUMENTS (5/8" PIPE UNLESS NOTED OTHERWISE)
- All monuments set have a plastic cap stamped L.S. 41814.



BEARINGS  
Bearings are on the Dodge County Coordinate System, NAD '83, 1996 adjustment.

UTILITY EASEMENT DEFINED  
An unobstructed easement for the construction and maintenance of all necessary overhead, underground or surface public utilities, including rights to conduct drainage and trimming on said easement.

U.E. = UTILITY EASEMENT

An Utility and Drainage Easement is dedicated over all of Outlot A.