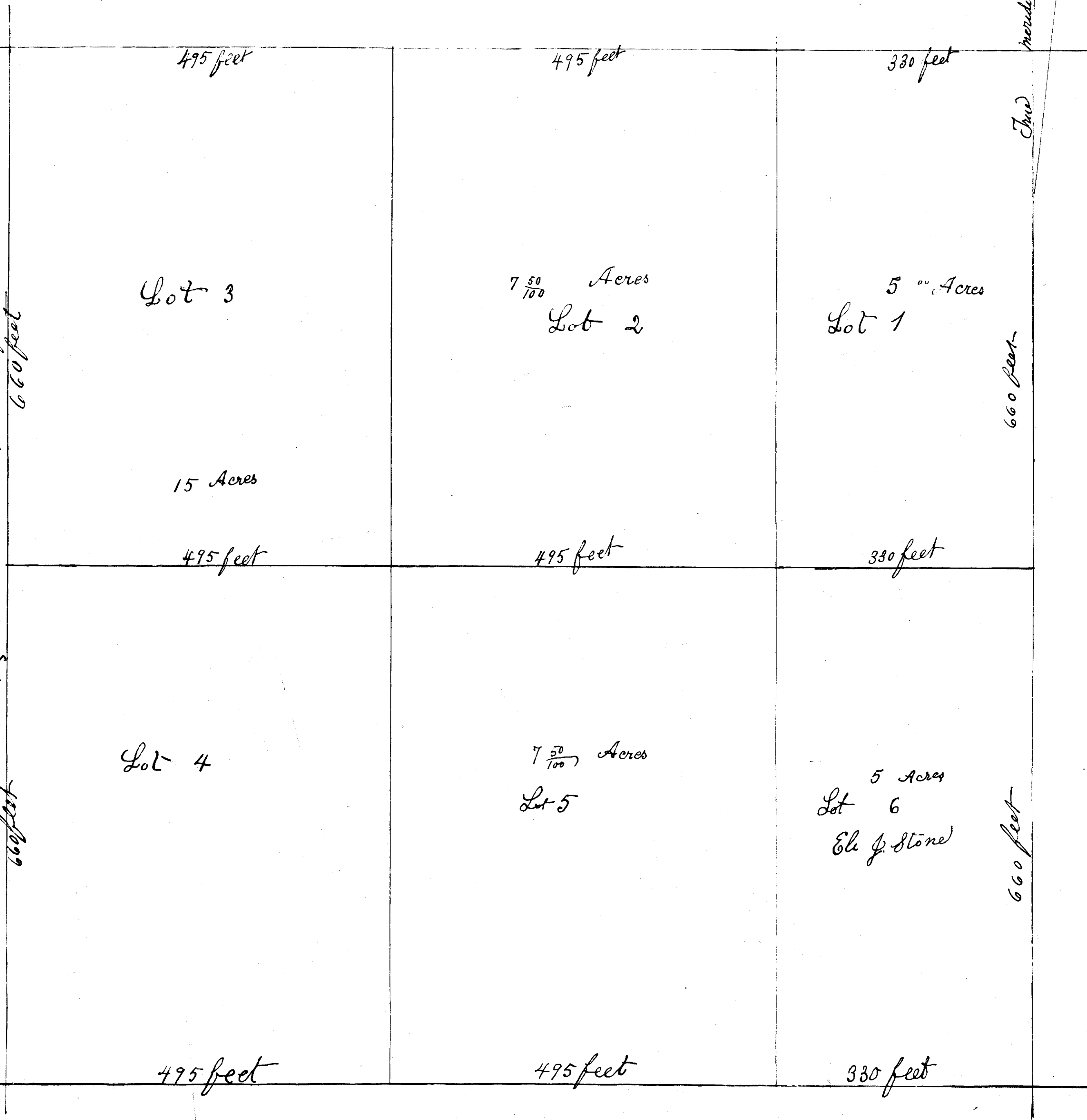


No. 1423  
 Filed January 13<sup>th</sup> 1888  
 at 11 o'clock A.M.  
 C. H. Johnson  
 Register of Deeds

Subdivision of

The North West quarter of South East quarter of Section 31 T. 109 R. 15 W.

This certifies that the above plat is made in conformity with the requirements of the special act of the Legislature of the State of Minnesota approved February 14<sup>th</sup> 1885 authorizing the County Commissioner of Goodhue County to plat along clear roads of land in said County.  
 C. H. Johnson  
 County Recorder  
 Goodhue County, Minnesota  
 Oct 29<sup>th</sup> Nov 17<sup>th</sup> 1887



I hereby certify that this is a true map of the subdivision of the North West quarter of South East quarter of Section 31 of Township N. 109 of Range W. 15 W. as surveyed a map by me

S. A. Hart (to Surveyor)