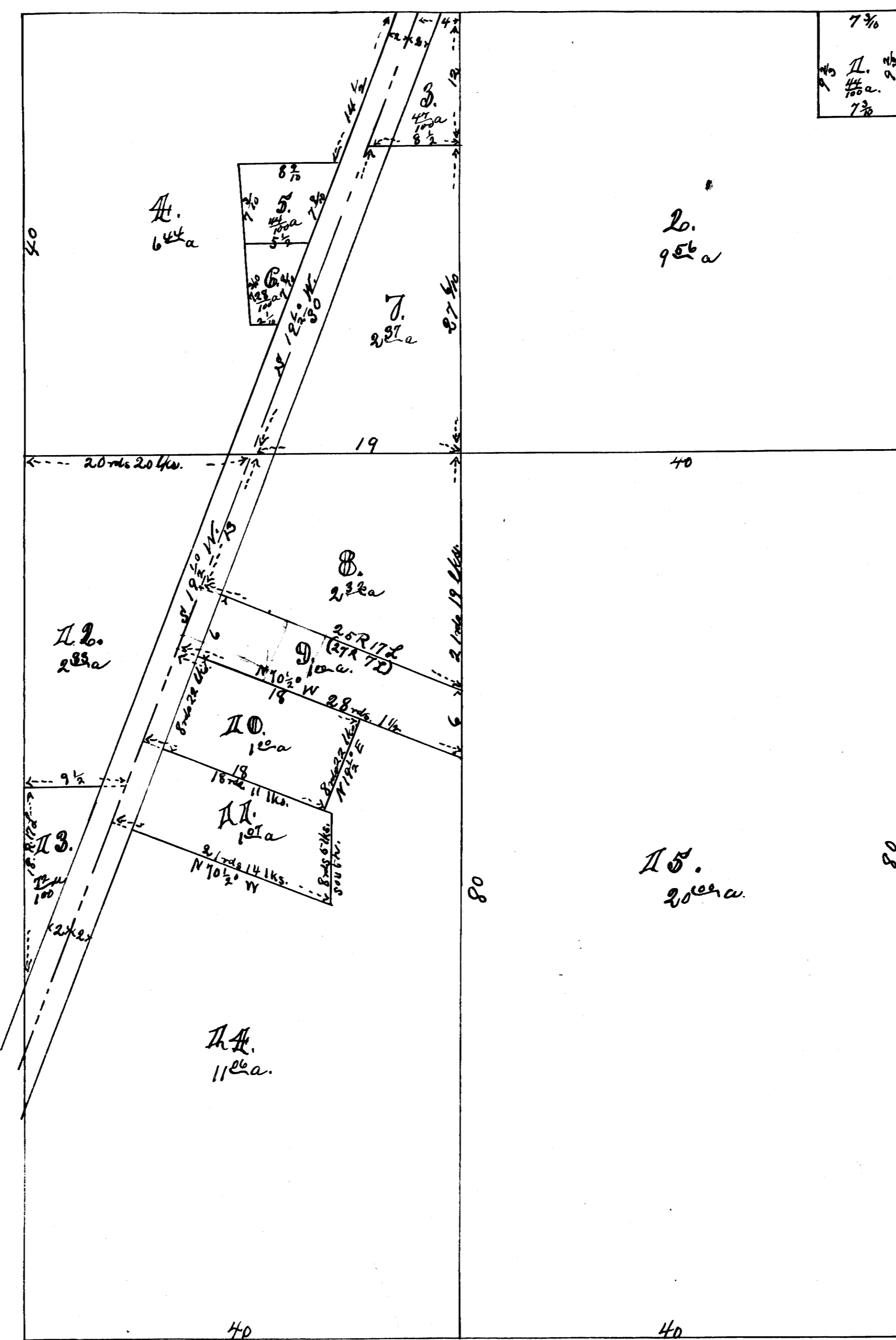


AUDITOR'S SUBDIVISION
OF LOTS 15 & 16 IN THE NE 1/4 AND ALSO THE NE 1/4 OF SE 1/4 OF 36-110-26.



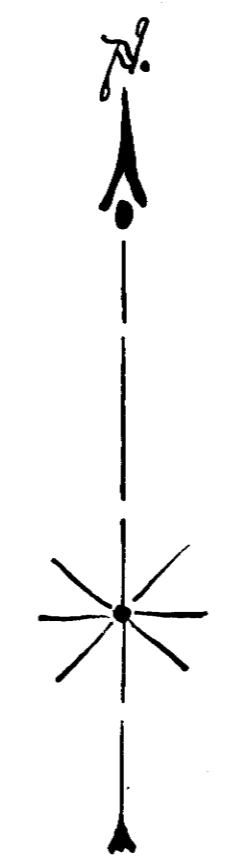
This certifies that this plat was made in conformity to the requirements of the Special Act of the Legislature of the State of Minnesota, approved Feb. 14, 1890 authorizing the commissioners of Goodhue County to plat irregular tracts of land in said county.

Red Wing, Jan 7th 1890
 E. H. Duse Co. Auditor.
 Co. Auditor Seal

I do hereby certify that this plat was made by me from records in the office of the Register of Deeds in the County of Goodhue and State of Minnesota and that the same is correct.

Red Wing Jan 7th 1890
 Louis P. Hoff Co. Surveyor.

S. C. A. D. E. Bonds = 1 inch.



4877.
 Filed for Record March 26th
 A.D. 1890. at 8³⁰ O'clock A.M.
 J. A. Webster
 Register of Deeds.