

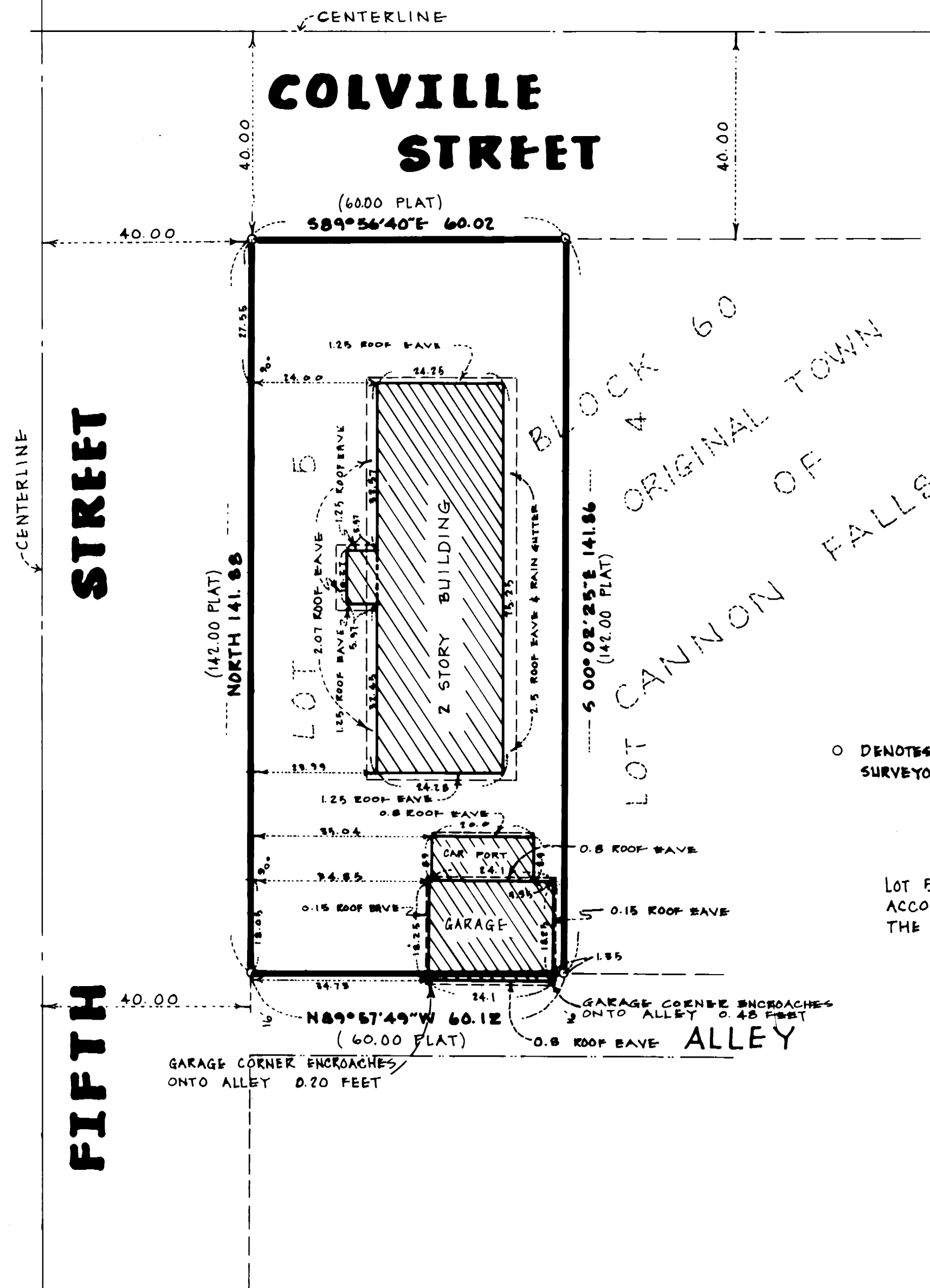
CONDOMINIUM NUMBER 1

GOLDY'S CONDOMINIUM

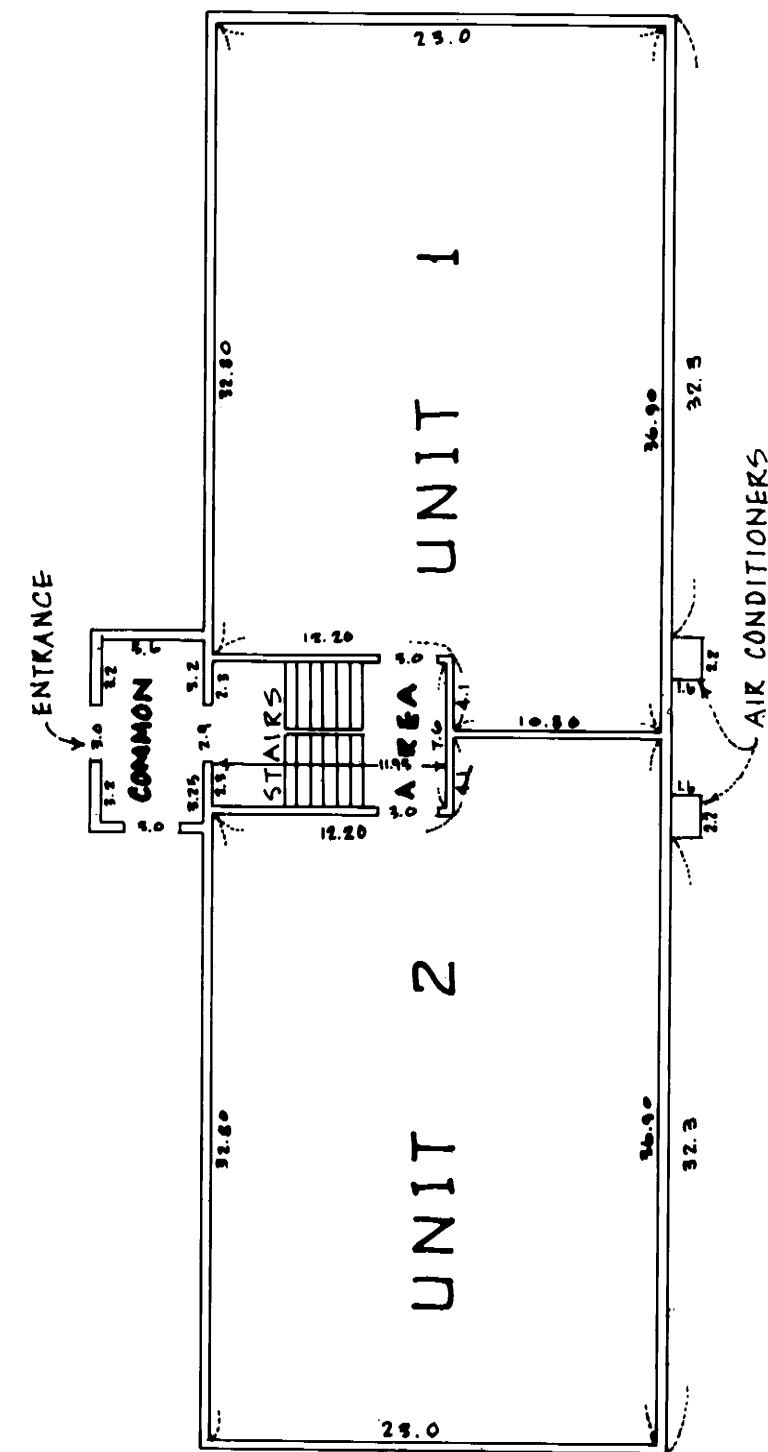
FLOOR PLANS SCALE: 1" = 10'

SITE PLAN SCALE: 1" = 20'

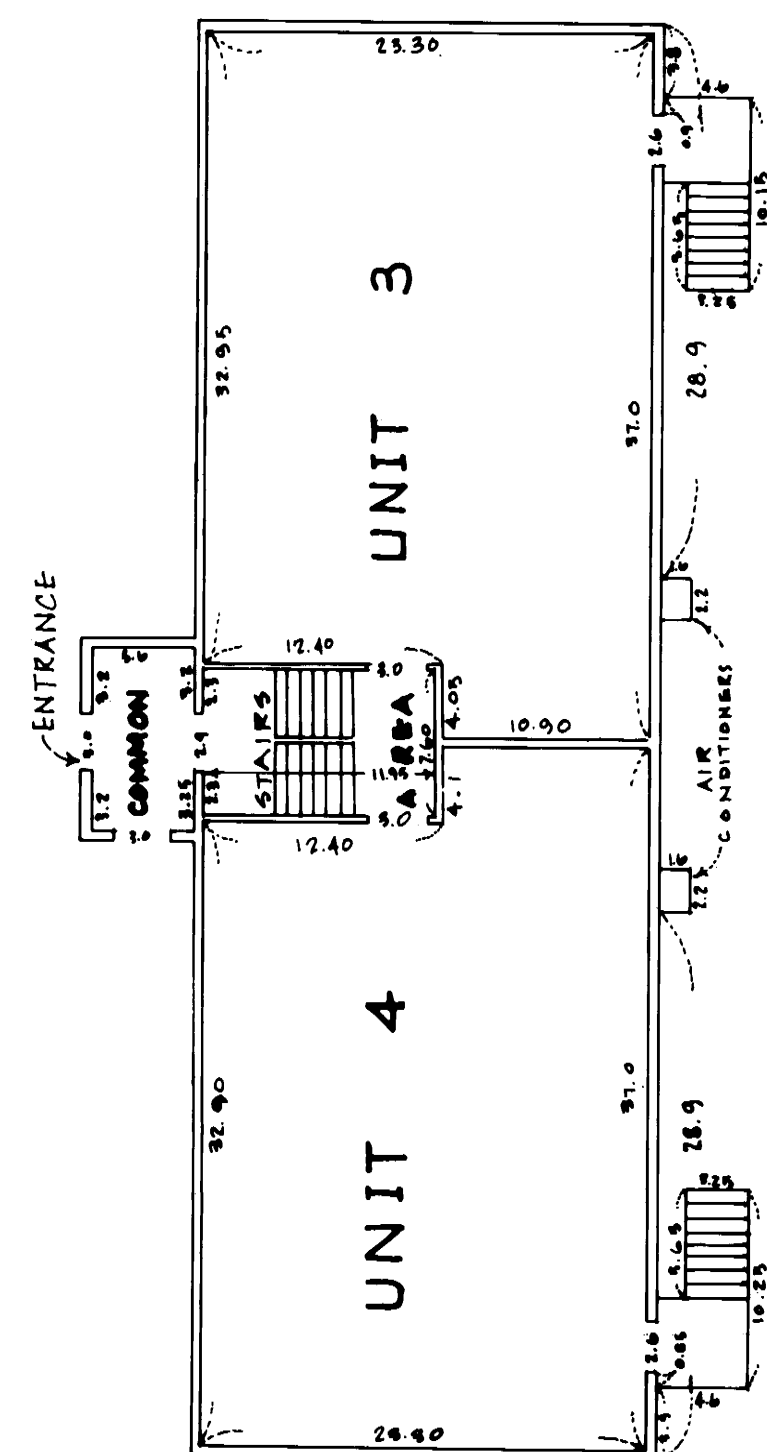
SITE PLAN (301 FIFTH STREET)



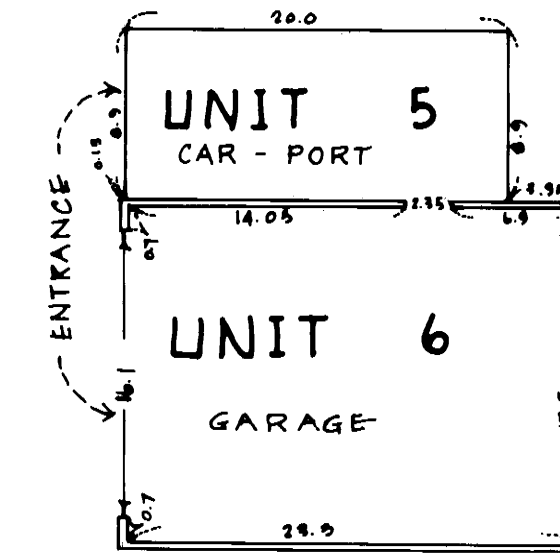
FIRST FLOOR PLAN



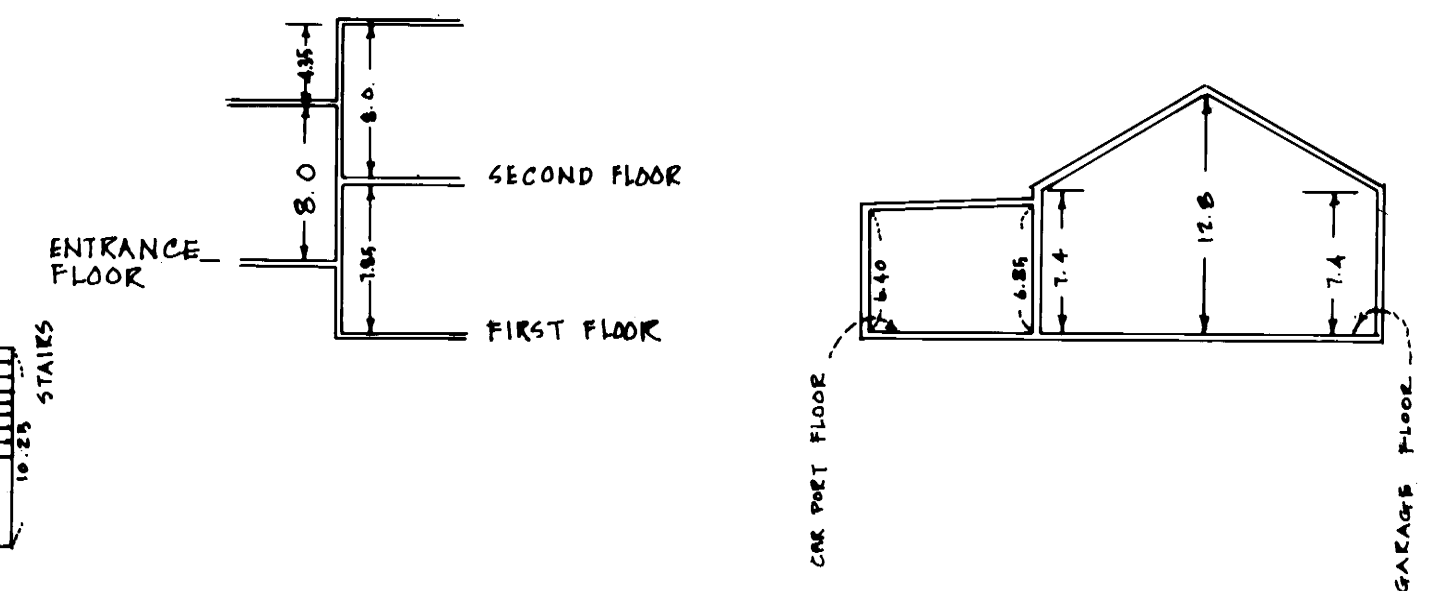
SECOND FLOOR PLAN



GARAGE & CAR PORT FLOOR PLAN



FLOOR TO CEILING HEIGHTS



○ DENOTES IRON PIPE BEARING LAND SURVEYOR REG. NO. 12788, IN PLACE

PROPERTY DESCRIPTION

LOT 5 OF BLOCK 60, ORIGINAL TOWN OF CANNON FALLS, ACCORDING TO THE RECORDED PLAT THEREOF, ON FILE IN THE OFFICE OF THE GOODHUE COUNTY RECORDER.

I HEREBY CERTIFY THAT THE WITHIN FLOOR PLANS OF CONDOMINIUM NUMBER 1, GOLDY'S CONDOMINIUM, BEING LOCATED AT 301 FIFTH STREET, CANNON FALLS, MINNESOTA, FULLY AND ACCURATELY DEPICT ALL INFORMATION REQUIRED BY MINNESOTA STATUTES SECTION 515A.2-110. DATED THIS 2 DAY OF SEPT 1981.

David A. Johnson
DAVID A. JOHNSON
REGISTERED LAND SURVEYOR
MINN. REG. NO. 12788.

STATE OF MINNESOTA
COUNTY OF Goodhue

THE FOREGOING INSTRUMENT WAS ACKNOWLEDGED BEFORE ME THIS 2nd DAY OF Sept 1981, BY DAVID A. JOHNSON, LAND SURVEYOR.

LORRAINE Z. ANDERSON
NOTARY PUBLIC
GOODHUE COUNTY
MY COMMISSION EXPIRES MAY 11, 1987

I HEREBY CERTIFY THAT ALL STRUCTURAL COMPONENTS AND MECHANICAL SYSTEMS SERVING THE UNITS OF CONDOMINIUM NUMBER 1, GOLDY'S CONDOMINIUM, LOCATED AT 301 FIFTH STREET, CANNON FALLS, MINNESOTA, ARE SUBSTANTIALLY COMPLETED CONSISTENT WITH THESE FLOOR PLANS. DATED THIS 2 DAY OF SEPT 1981.

Robert J. Guditis
ROBERT J. GUDITIS
REG. PROFESSIONAL ENGINEER
MINN. REG. NO. 11524

STATE OF MINNESOTA
COUNTY OF Goodhue

THE FOREGOING INSTRUMENT WAS ACKNOWLEDGED BEFORE ME THIS 2nd DAY OF Sept 1981, BY ROBERT J. GUDITIS, ENGINEER.

Lorraine Z. Anderson
LORRAINE Z. ANDERSON
NOTARY PUBLIC
GOODHUE COUNTY, MINN.
MY COMMISSION EXPIRES May 11, 1987

LORRAINE Z. ANDERSON
NOTARY PUBLIC
GOODHUE COUNTY
MY COMMISSION EXPIRES MAY 11, 1987

I HEREBY CERTIFY THAT THE WITHIN FLOOR PLANS OF CONDOMINIUM NUMBER 1 WERE FILED IN THIS OFFICE FOR RECORD THIS 16 DAY OF October 1981 AT 1:30 O'CLOCK P.M.

BY *Craig A. Peterson* COUNTY RECORDER, GOODHUE COUNTY, MINNESOTA.
DOCUMENT NUMBER 277515

Goodhue County Land Surveying Company, Inc.
formerly a branch of Harry S. Johnson Companies, Inc.
433 Main Street, Red Wing, MN 55066 Office: (612) 388-7550
Homes: (612) 388-3365; (612) 388-4114