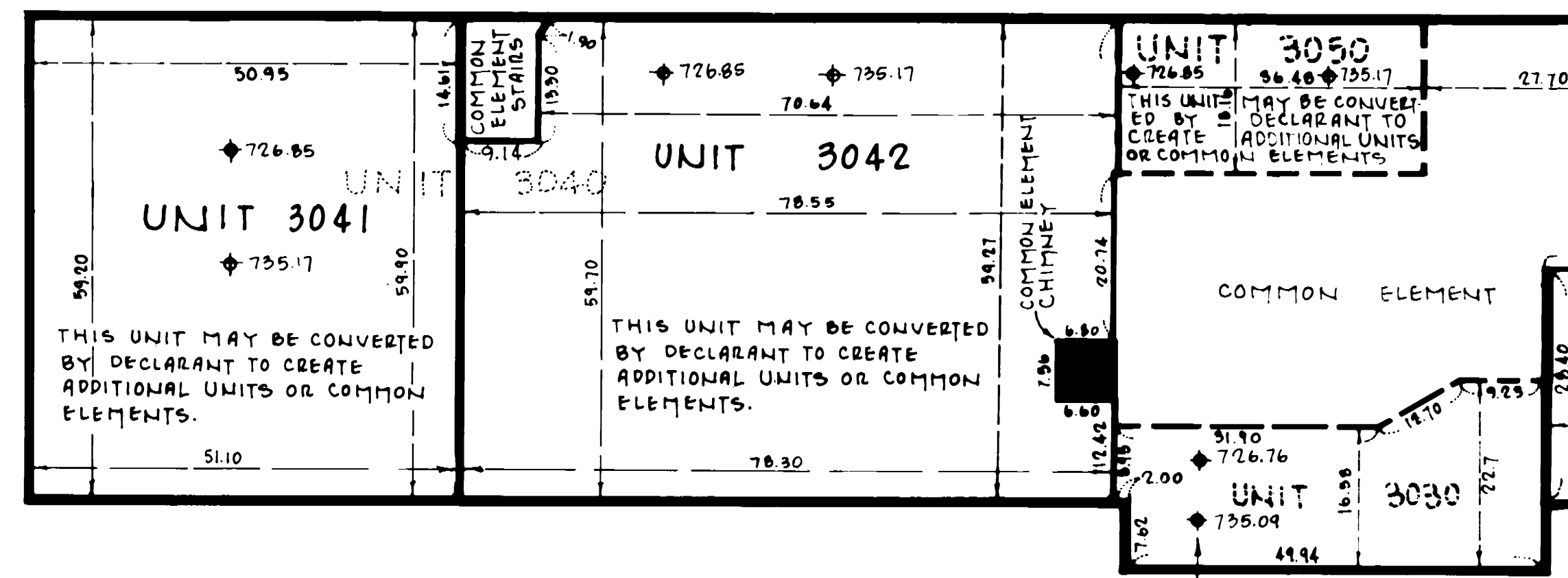


CONDOMINIUM NUMBER 3 THE POTTERY CONDOMINIUM

AMENDMENT TO FLOOR PLANS UNIT 3040

These Amended Floor Plans have been recorded as part of the Amendment to Declaration and Floor Plans filed as Document Number ~~3000~~ on the 22 day of August, 1983, Goodhue County Recorder.

THIRD FLOOR



THIS UNIT MAY BE CONVERTED BY DECLARANT TO CREATE ADDITIONAL UNITS OR COMMON ELEMENTS.

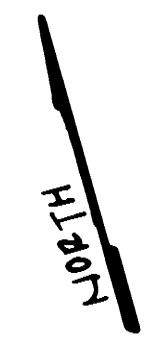
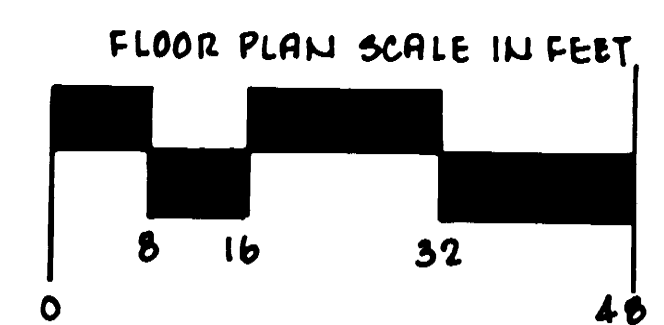
The undersigned being first duly sworn under oath, certifies and deposes that these Amended Floor Plans of Unit 3040, CONDOMINIUM NO. 3, THE POTTERY CONDOMINIUM, fully and accurately depicts all information required by Minnesota Statutes Sections 515A.2-110 and 515A.2-115.

David A. Johnson
David A. Johnson, Register Land Surveyor
Minn. Registration No. 12788

NOTARY:
State of Minnesota)
County of _____) ss.

The foregoing instrument was acknowledged before me this 26 day of JULY, 1983 by David A. Johnson, a registered professional land surveyor

Diane M. Renner
DIANE M. RENNER
NOTARY PUBLIC, GOODHUE COUNTY, MINN.
Notary Public



Benchmark: Top nut fire hydrant on north side of Main Street opposite west end of 4 (four) story brick building. Elevation 708.41 feet. (City Engineering Department datum)

- Denotes existing wall as the unit vertical plane boundary
- - - Denotes unit vertical plane boundary
- ◆ Denotes unit bottom horizontal plane boundary elevation
- ◆ Denotes unit top horizontal plane boundary elevation

Goodhue County Land Surveying Company, Inc.
formerly a branch of Harry S. Johnson Companies, Inc.
1203 Main Street, Red Wing, MN 55066 Office: (612) 388-7550
Homes: (612) 388-3385; (612) 388-4111