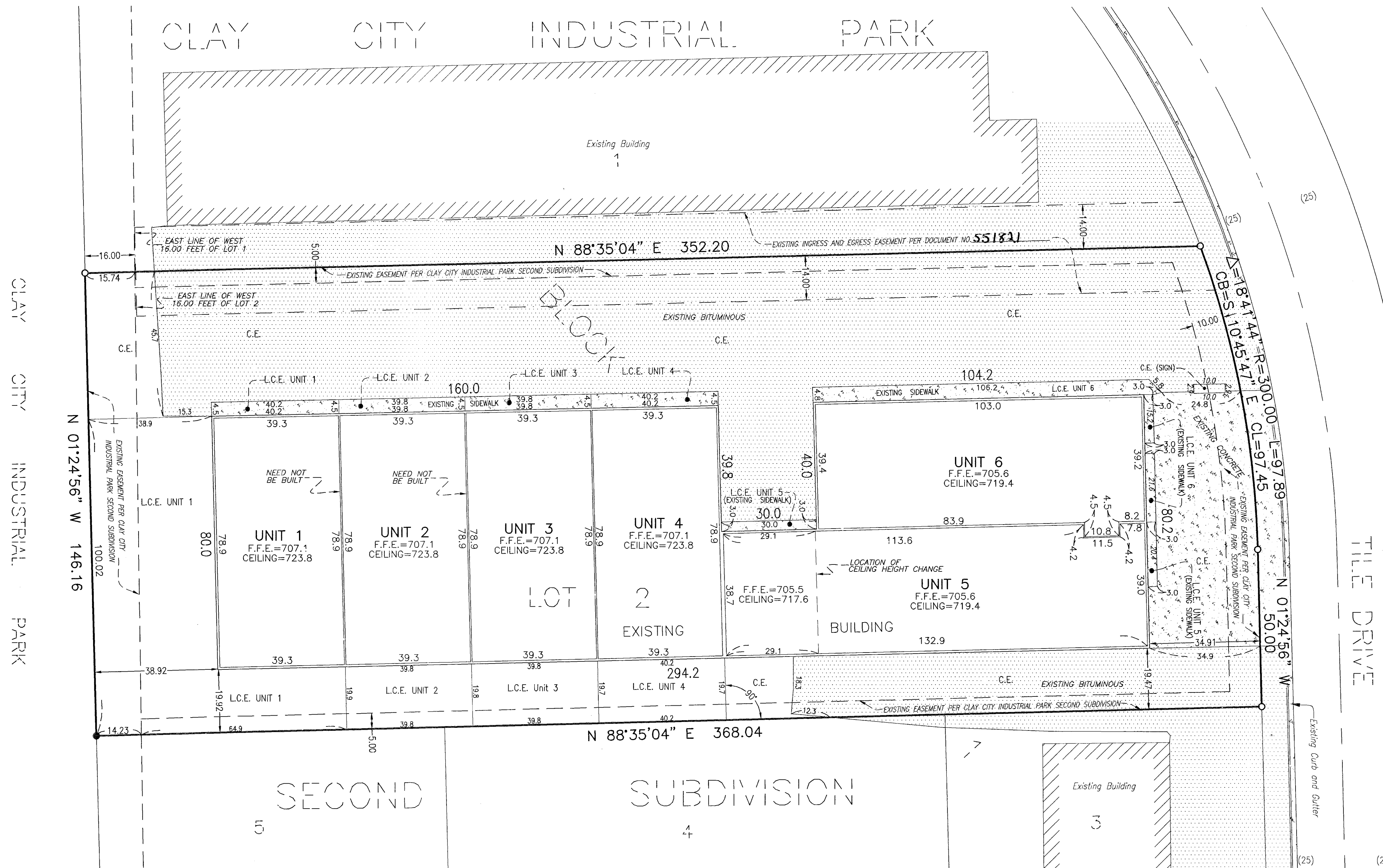
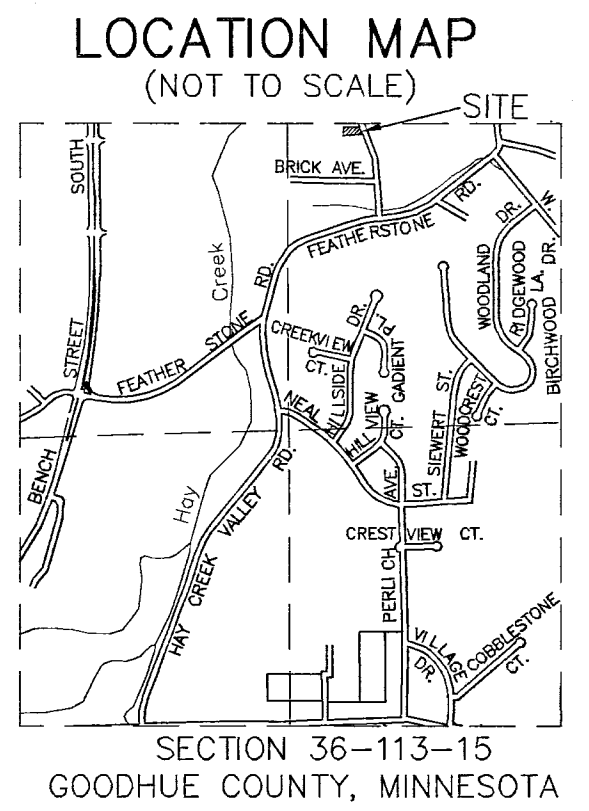


# COMMON INTEREST COMMUNITY NUMBER 87 A CONDOMINIUM TILE DRIVE CONDOMINIUM

This CIC Plot is part of the Declaration recorded as Document Number 551833 on the 21<sup>st</sup> day of December, 2007.  
*C. Hanni*  
Lisa M. Hanni, County Recorder



- LEGEND**
- Denotes a 3/4" x 15" Iron Pipe set with a Plastic Cap Stamped 42302
  - Denotes an Iron Pipe Found (Unless Otherwise Described)
  - ▨ Concrete Surface Area
  - ▩ Bituminous Surface Area
  - C.E. Common Elements
  - L.C.E. (UNIT #) Denotes Limited Common Element and the Respective Unit
  - F.F.E. First Floor Elevation



- NOTES:**
- Distances are Measured and do not imply that the Building is Mathematically Square.
  - Units are Located in an Existing One Story Structure.
  - Interior dimensions shown are measured to the unfinished surfaces of the walls, floors, and ceilings.
- BENCHMARK**
- Elevations are referenced to the top nut of a hydrant located on the east side of Tile Drive approximately 1580 ft. southerly of its intersection with Withers Harbor Drive. The benchmark has an elevation of 705.36 ft (NGVD 1929).
- BASIS OF BEARINGS**
- Bearings are referenced to the South Line of Lot 2, Block 1, CLAY CITY INDUSTRIAL PARK SECOND SUBDIVISION, which is assumed to bear of North 88°35'04" East.

**SURVEYOR'S CERTIFICATE**

I, Mark A. Schoenfelder, do hereby certify that the work was undertaken by or reviewed and approved by me for this CIC Plot of COMMON INTEREST COMMUNITY NUMBER 87, TILE DRIVE CONDOMINIUM, being located upon:

Lot 2, Block 1, Clay City Industrial Park Second Subdivision, according to the recorded plat thereof, Goodhue County, Minnesota.

Fully and accurately depicts the information required by Minnesota Statutes, Section 515B.2-110.

Dated this 21st day of December, 2007.

*Mark A. Schoenfelder*  
Mark A. Schoenfelder, Land Surveyor  
Minnesota License No. 42302

STATE OF MINNESOTA  
COUNTY OF *Clay*

The foregoing instrument was acknowledged before me this 21st day of December, 2007, by Mark A. Schoenfelder, a Licensed Land Surveyor.

*Wakasha*  
Notary Public, *Wakasha* County, Minnesota

My Commission Expires *Jan. 31, 2012*

**ENGINEER'S CERTIFICATE**

I, Craig Britton, pursuant to Minnesota Statutes, Section 515B.2-101(c), do hereby certify that the structural components of the structures containing the units and the mechanical systems serving more than one unit, are substantially completed.

Dated this 21st day of December, 2007.

*Craig Britton*  
Craig Britton, Licensed Engineer  
Minnesota License No. 44228

STATE OF MINNESOTA  
COUNTY OF *Clay*

The foregoing instrument was acknowledged before me this 21st day of December, 2007, by Craig Britton, a Licensed Engineer.

*Wakasha*  
Notary Public, *Wakasha* County, Minnesota

My Commission Expires *Jan. 31, 2012*

**TAX STATEMENT**

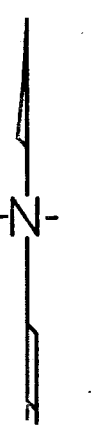
Pursuant to Minnesota Statutes, Section 515B.1-116 and Section 272.12, taxes payable in the year 2007, on real estate herein before described, have been paid, there are no delinquent taxes and transfers entered, on this 21<sup>st</sup> day of December, 2007.

*Carolyn Holmsten*  
Carolyn Holmsten, County Auditor/Treasurer  
By: \_\_\_\_\_, Deputy

**COUNTY SURVEYOR'S APPROVAL**

Pursuant to Minnesota Statutes, Chapter 389.09, Subd. 2 and Goodhue County Ordinance 2.78, this CIC Plot has been reviewed and is approved this 21<sup>st</sup> day of December, 2007.

*Lisa Hanni*  
By: \_\_\_\_\_  
Lisa Hanni, Goodhue County Surveyor



**QED ENGINEERING, INC.**  
CIVIL ENGINEERS & LAND SURVEYORS

6301 BANDEL ROAD NW, SUITE 301  
ROCHESTER, MN 55901  
PH. 507-292-8743 FAX 507-292-8746  
rochester@qedengineering.net

240 HARRISON STREET  
RED WING, MN 55968  
PH. 651-388-2443 FAX 651-388-5236  
redwing@qedengineering.net