

**STATE HIGHWAY RIGHT OF WAY PLAT No. 25-1**

STATE PROJECT 2511 (60=21-24-3)  
 IN THE SOUTH HALF OF SECTION 26 T.110N, R.17W. AND THE  
 NORTH HALF OF SECTION 35 T.110N., R.17 W.  
 GOODHUE COUNTY, MINNESOTA

THE COMMISSIONER OF HIGHWAYS IS HEREBY DESIGNATING THE DEFINITE  
 LOCATION OF TRUNK HIGHWAY NO. 60 FROM  
 1.5 MILES WEST OF TRUNK HIGHWAY NO. 57 IN WANNAMINGO TO TRUNK  
 HIGHWAY NO. 57

As shown on this plat prepared by the State of Minnesota Department of Highways, is hereby certified as the  
 official plat of that portion of said T.H. 60 within the designated portion of Sections 26 and 35, and the Com-  
 missioner's Order therefor, pursuant to Minnesota Laws of 1969, Chapters 207, 208 and 209 (now codified  
 as Minnesota Statutes 1969, section 161.16 subd. 2, section 160.14 subd. 1, and section 160.085 respectively).

Commissioner's Order No.	Location	Nature of Interest
53682	Plats 25-1 & 25-2	Definite location, width, access, temporary ease- ment

Recommended for Certification: *R.G. Brennan* 10-1-73 Date  
 R. G. Brennan Director of R/W Operations

Certified: *Ray Lappgaard* 10/1/73 Date  
 Ray Lappgaard Commissioner of Highways

I hereby certify that this plat was prepared by me or under my direct supervision and is a correct representation  
 of said survey; that all distances are horizontal ground distances in feet; that difference between azimuths represent  
 plane angles in degrees, minutes and seconds; that the monuments to delineate this survey have been placed  
 in the ground as shown on the plat; and that the right-of-way boundary lines are designated on the plat.

Certified by *Douglas R. Tawn* 2002 9-28-1973  
 Registered Land Surveyor Reg. No. Date

RIGHT OF WAY IN SECTION 35 T110N R17W							
PARCEL	OWNER	LOCATION	TOWNER'S CERTIFICATE NO.	NEW	TEMPORARY	BUILDING	PERMANENT R/W INTEREST
				T.H. R/W	EASEMENT	REMOVAL EASEMENT	
226	Palmer Yngsdal	Pt. NE 1/4		2.48	0.42		Fee
RIGHT OF WAY IN SECTION 26 T110N R17W							
227	Harold Bjrgan	Pt. S 1/2 SE 1/4		2.70	0.31		Fee

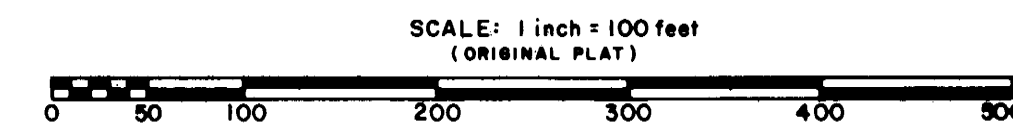
**SURVEY STANDARDS**

The methods and equipment used in the control surveys for this plat and the checks made on monument  
 location allow the following statements:

- The state plane coordinates shown on one cast iron monument are within 0.3 ft., one standard deviation, as based on the control survey to national control monuments.
- The plat values, azimuth and distances, are based on the project control survey system. The cast iron monuments are set within 0.1 ft., one standard deviation, of their mathematical position.
- Certificates of location have been filed at the Register of Deed's office for the section corner monuments shown on this plat.
- For details of the control survey and land survey contact the M.H.D. for Survey Report of R/W plats 25-1 & 25-2, State Project 2511(60=21-24-3)

**AZIMUTH ORIENTATION AND GRID CONVERSION**

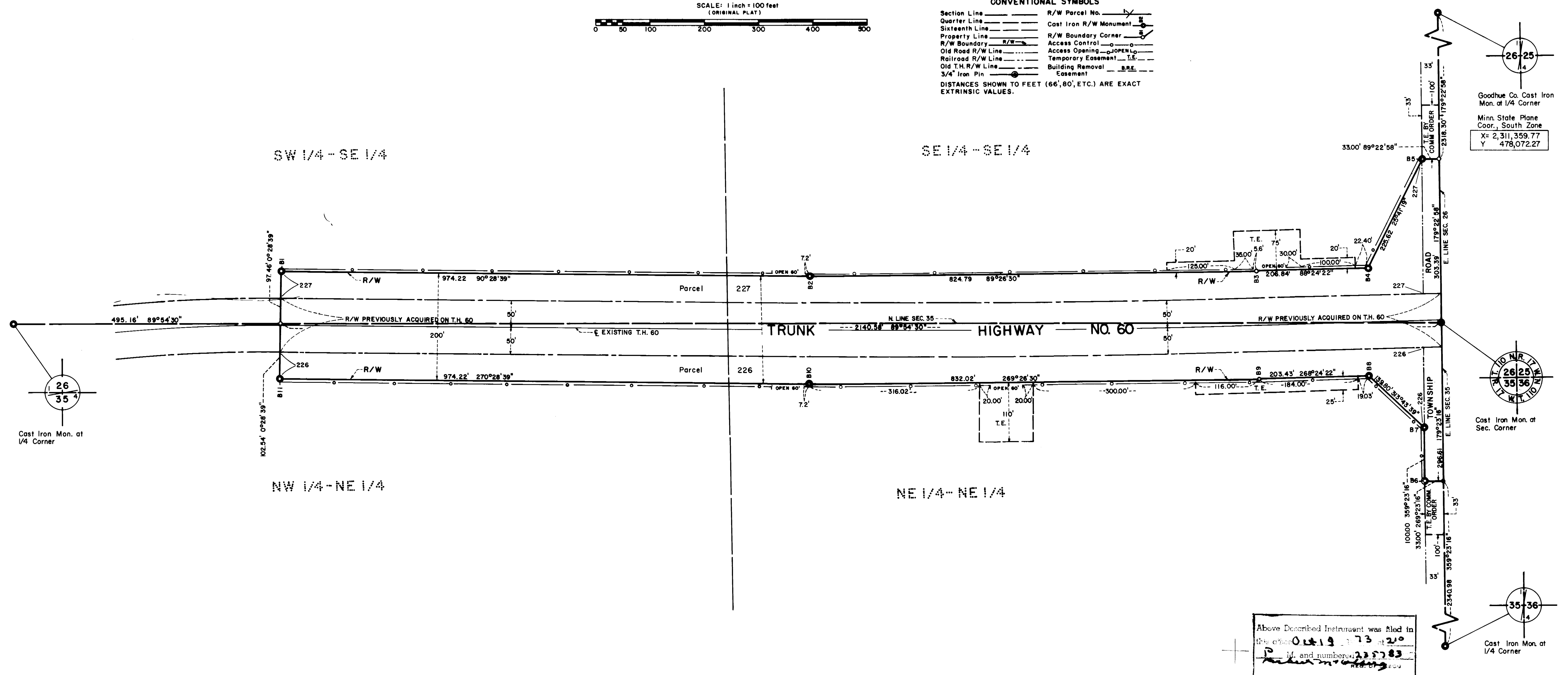
Plat azimuths are oriented to Minnesota State Plane Coordinate System with 0 degrees  
 0 minutes 0 seconds being "GRID NORTH".  
 Plat distances are ground lengths and can be converted to Minnesota State Plane Grid  
 lengths by multiplying Plat distances by 0.9998742



**CONVENTIONAL SYMBOLS**

Section Line	R/W Parcel No.
Quarter Line	Cast Iron R/W Monument
Sixteenth Line	R/W Boundary Corner
Property Line	Access Control
R/W Boundary	Access Opening
Old Road R/W Line	Temporary Easement
Railroad R/W Line	Building Removal Easement
Old T.H. R/W Line	3/4" Iron Pin

DISTANCES SHOWN TO FEET (66', 80', ETC.) ARE EXACT  
 EXTRINSIC VALUES.



Above Described Instrument was filed in  
 this office *Oct 19 1973* at *2:00*  
 P.M. and numbered *235783*  
*Ray Lappgaard*  
 REG. OF DEEDS